



Contents [[hide](#)]

- 1 [sensio SE900530 Titan Wireless Sensor and Controller](#)
- 2 [Product Usage Instructions](#)
- 3 [WHAT'S IN THE BOX](#)
- 4 [INSTALLATION INSTRUCTION](#)
- 5 [Operation](#)
- 6 [Wireless Titan](#)
- 7 [Specifications](#)
- 8 [SAFETY WARNINGS](#)
- 9 [MAINTENANCE](#)
- 10 [Customer Service](#)
- 11 [FAQ](#)
- 12 [Documents / Resources](#)
 - 12.1 [References](#)



sensio SE900530 Titan Wireless Sensor and Controller



Specifications

- **Product Name:** Wireless Titan+ Sensors and Controller
- **Models:** SE900530/SE900630/SE900730/SE900830
- **Product Variants:**
 - **SE900530** – Titan+ Wireless IR Sensor and Controller
 - **SE900630** – Titan+ Wireless PIR Sensor and Controller
 - **SE900730** – Titan+ Wireless Touch Sensor and Controller
 - **SE900830** – Titan+ Wireless Door Sensor and Controller
- **Controller:** TBB 2.4G Controller- SE900430
- **IP Rating:** IP20
- **Voltage:** 24V

Product Usage Instructions

Installation

1. Plug in all leds.
2. Hold the device for 10 seconds until the light source flashes, indicating the receiver is in pairing mode.
3. To pair sensors, press the sensor button once. The light source will flash to indicate successful pairing. Repeat for additional sensors.

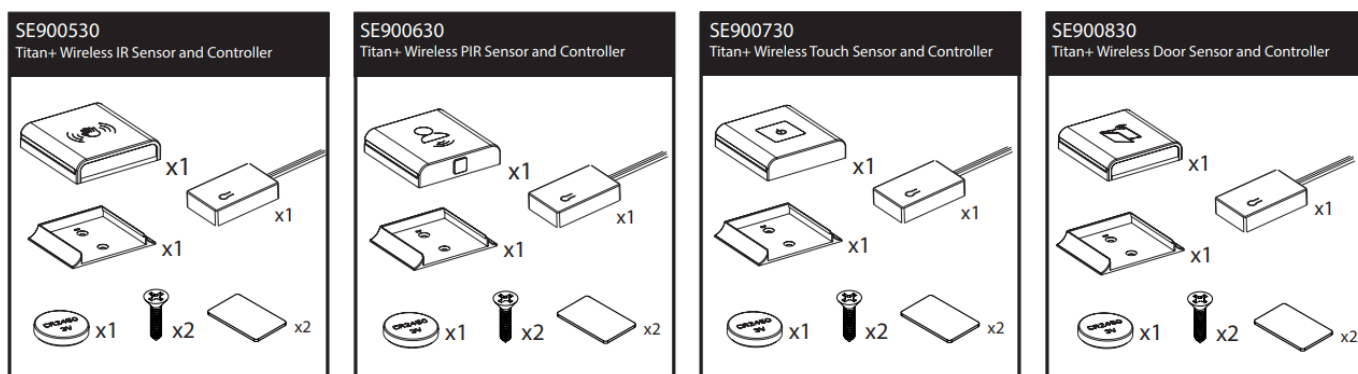
Unpairing

1. To unpair a sensor, hold the device for 10 seconds.

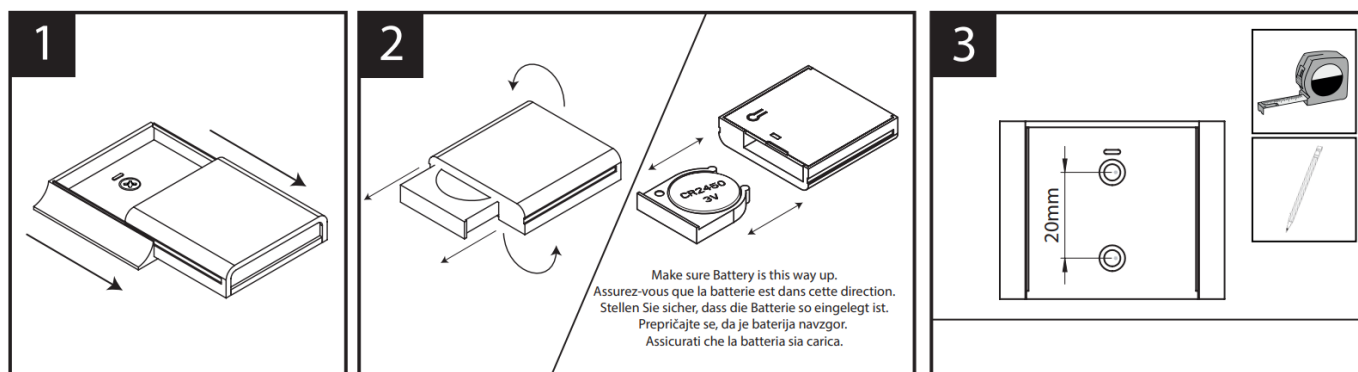
Sensor Types

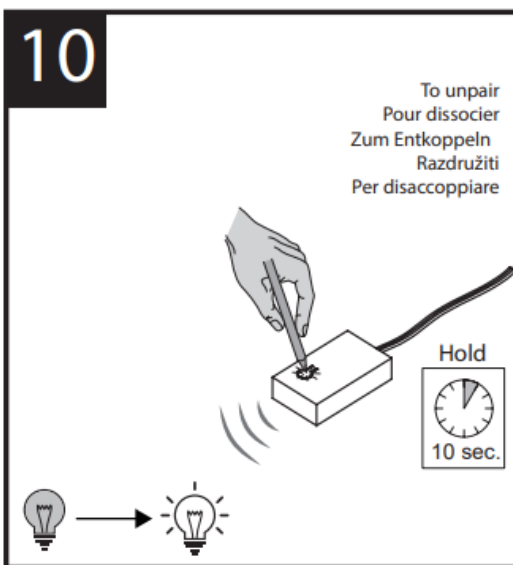
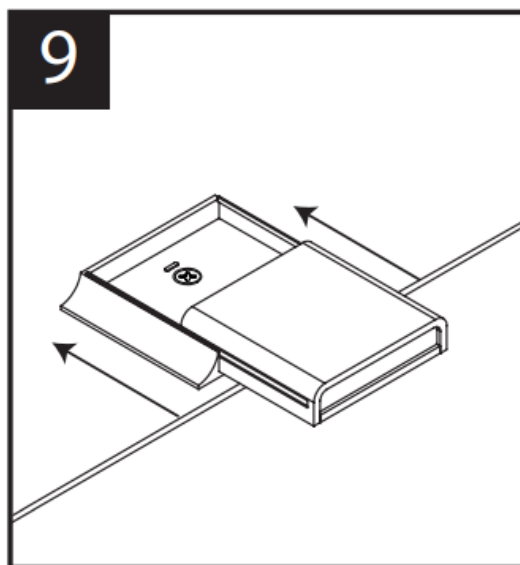
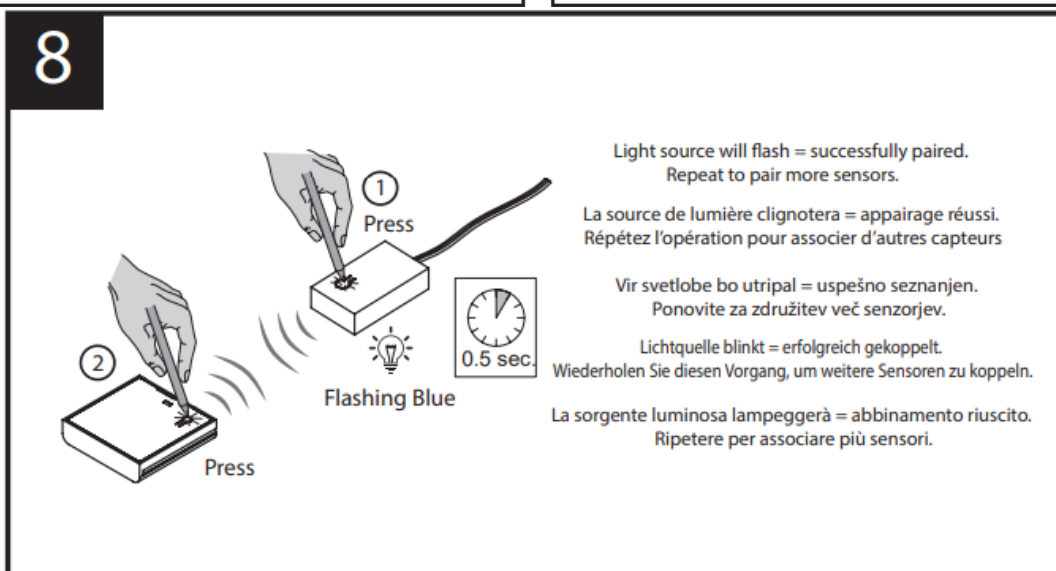
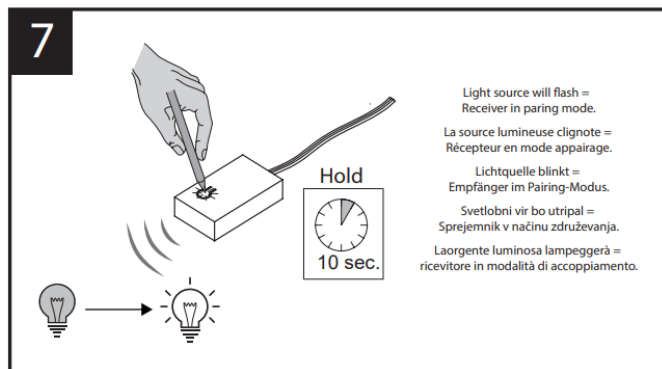
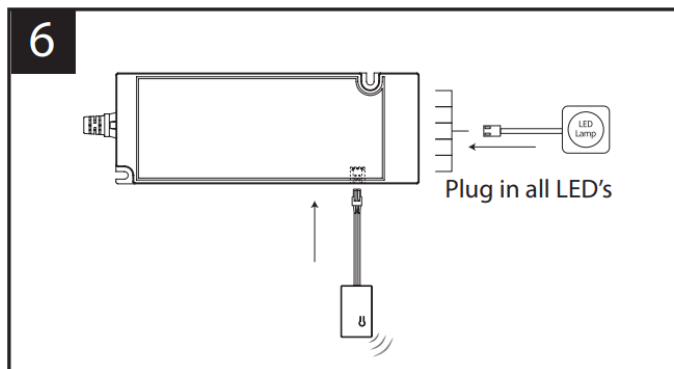
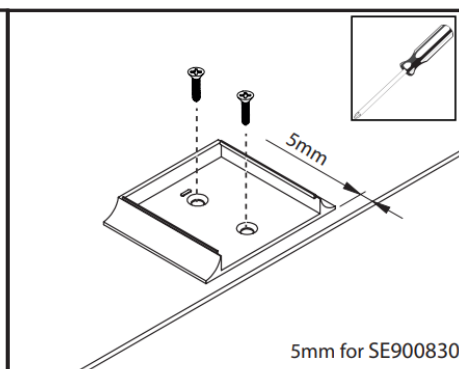
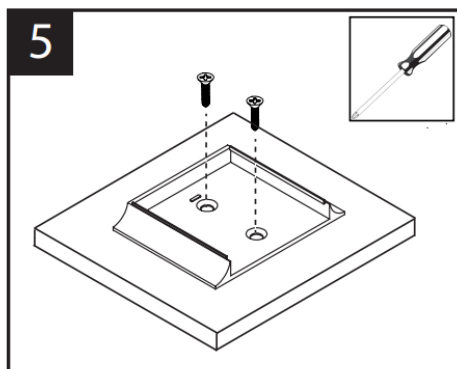
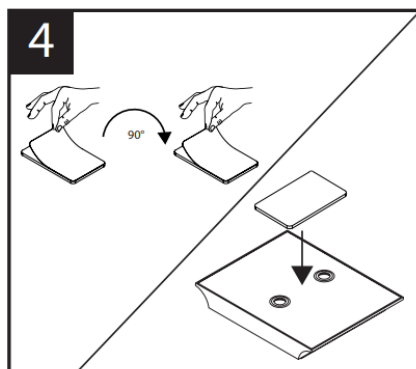
- **SE900530** – Wireless IR Sensor: Wave range of 0-50mm
- **SE900630** – Wireless PIR Sensor
- **SE900730** – Wireless Touch Sensor
- **SE900830** – Wireless Door Sensor

WHAT'S IN THE BOX



INSTALLATION INSTRUCTION

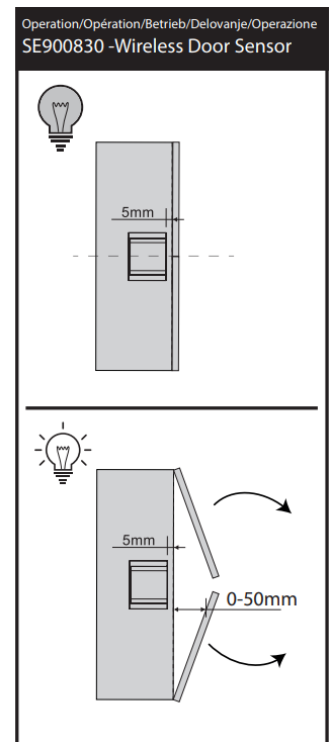
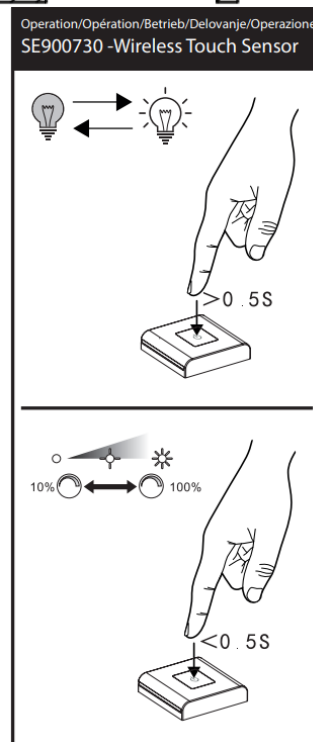
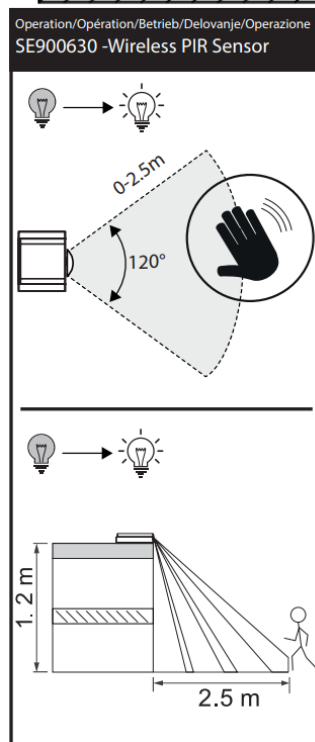
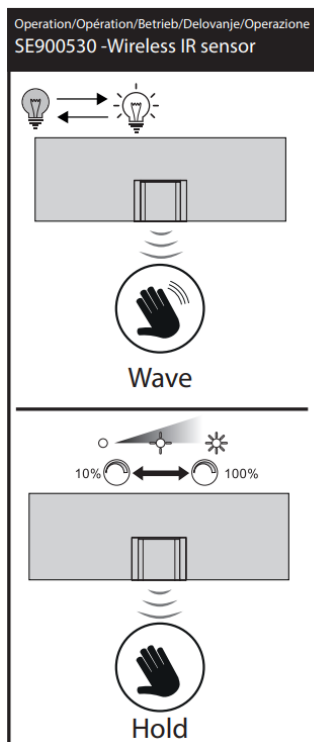
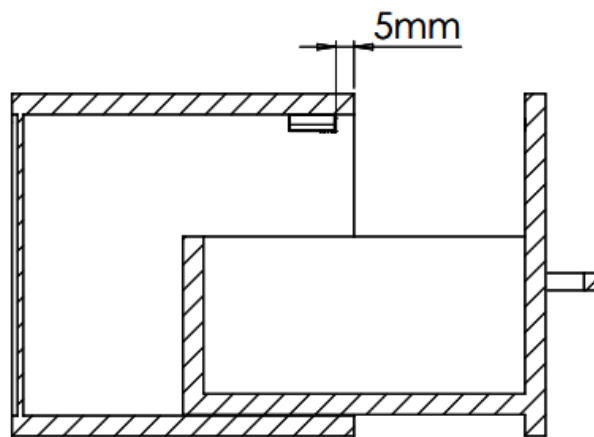




Operation

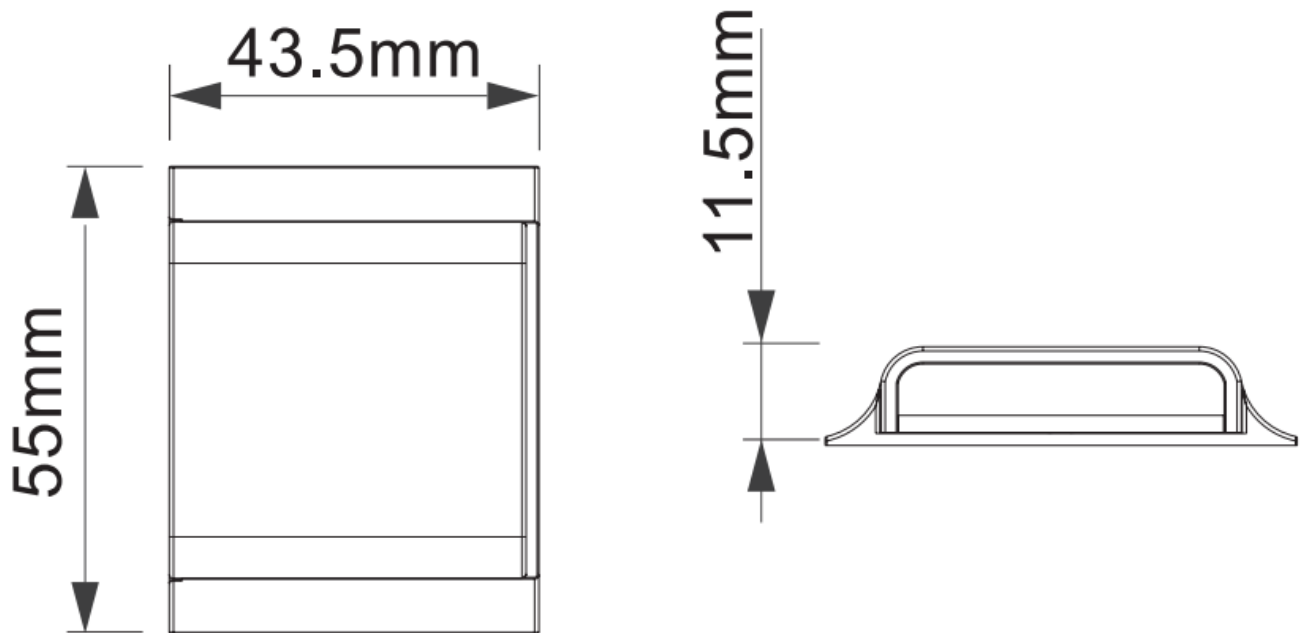
SE900830 -Wireless Door Sensor

- On the SE900830, ensure that the sensor is 5mm from the edge

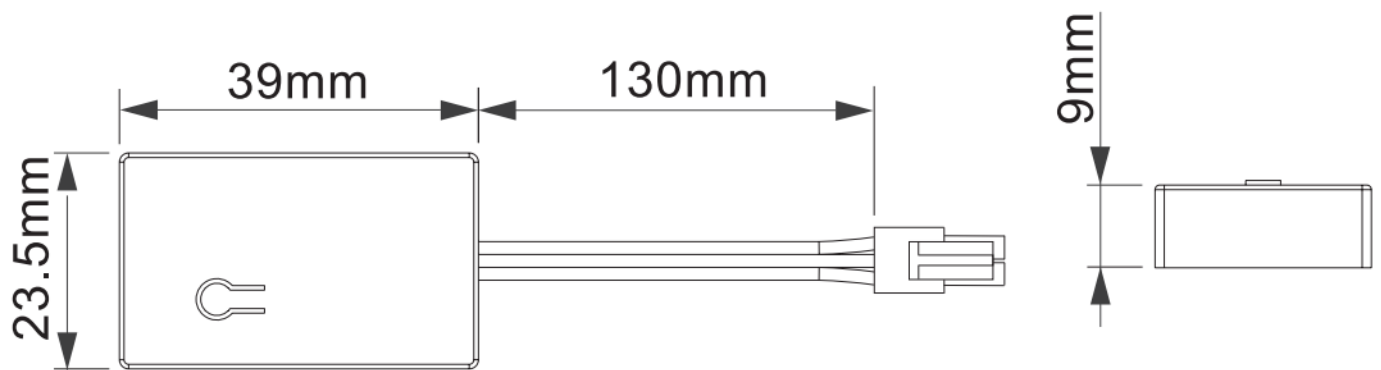


Wireless Titan

- Wireless Titan+ Sensors – SE900030/ SE900130/ SE900230/ SE900330**



TBB 2.4G Controller- SE900430



Specifications

- **Product Wattage:** N/A
- **IP Rating:** IP20
- **Input Voltage:** 24V
- **Colour temperature:** N/A

SAFETY WARNINGS

- **WARNING:** Read these instructions carefully before proceeding. Keep these instructions in a safe place for future reference.
- **IMPORTANT:** We recommend that you consult a qualified electrician. All electrical installations must be carried out per current IEE wiring regulations (BS7671).

SAFETY WARNINGS:

- These products must not be modified in any way or installed in any other way than dictated in these instructions.
- Any modifications may render the product unsafe and will void the product's warranty.
- This product is for indoor use only.
- Keep out of moisture and use only in dry rooms.

WASTE ELECTRICAL & ELECTRONIC EQUIPMENT (WEEE)

- The symbol on the product and/or accompanying document, the crossed-out wheellie bin, indicates that this product may not be treated as household waste.
- Instead it should be handed over to the applicable collection point for the recycling of electrical and electronic waste.

MAINTENANCE

- Ensure that the power is disconnected before cleaning.
- Wipe over with a cloth periodically.
- Do not use harsh chemical solvents, as this may discolour or damage the finish.

NOTE

- Please ensure you use an appropriate driver with an adequate max wattage.
- Do not overload the LED Driver.

Customer Service

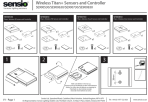
- **Sensio Ltd, Speedwell Road, Castleford, West Yorkshire, United Kingdom, WF10 5PY**
- **EU Representative: Sensio Lighting (Dublin) Ltd, The Black Church, St. Mary's Place, Dublin, Ireland, D07 P4AX**
- **Tel: +4401977522020**
- www.sensio.co.uk



FAQ

- **Q: How do I know if the sensor is successfully paired?**
 - **A:** When pairing, the light source will flash to indicate successful pairing of the sensor. Repeat the process for additional sensors.
- **Q: What is the IP rating of the controller?**
 - **A:** The controller has an IP rating of IP20.
- **Q: What is the voltage requirement for the product?**
 - **A:** The product operates at 24V.

Documents / Resources

	<p>sensio SE900530 Titan Wireless Sensor and Controller [pdf] Installation Guide</p> <p>SE900530, SE900630, SE900730, SE900830, SE900530 Titan Wireless Sensor and Controller, SE900530, Titan Wireless Sensor and Controller, Wireless Sensor and Controller, Sensor and Controller, and Controller</p>
---	--

References

- [sensio Sensio Lighting](#)
- [User Manual](#)

📁 Sensio

📎 and Controller, SE900530, SE900530 Titan Wireless Sensor and Controller, SE900630, SE900730, SE900830, Sensio, Sensor and Controller, Titan Wireless Sensor and Controller, Wireless Sensor and Controller

—Previous Post

[sensio SE10032NDN0 Ray Luminaires Installation Guide](#)

Leave a comment

Your email address will not be published. Required fields are marked *

Comment *

Name

Email

Website

☐ Save my name, email, and website in this browser for the next time I comment.

Post Comment

Search:

e.g. whirlpool wrf535swhz

Search

Manuals+ | Upload | Deep Search | Privacy Policy | @manuals.plus | YouTube

This website is an independent publication and is neither affiliated with nor endorsed by any of the trademark owners. The "Bluetooth®" word mark and logos are registered trademarks owned by Bluetooth SIG, Inc. The "Wi-Fi®" word mark and logos are registered trademarks owned by the Wi-Fi Alliance. Any use of these marks on this website does not imply any affiliation with or endorsement.