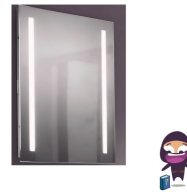


sensio SE34195C0 Diffused Slimline LED Mirror with Shaver Socket



sensio SE34195C0 Diffused Slimline LED Mirror with Shaver Socket Instruction Manual

[Home](#) » [Sensio](#) » **sensio SE34195C0 Diffused Slimline LED Mirror with Shaver Socket Instruction Manual** 

Contents

- [1 sensio SE34195C0 Diffused Slimline LED Mirror with Shaver Socket](#)
- [2 Product Usage Instructions](#)
- [3 Dimension](#)
- [4 Included](#)
- [5 Operation](#)
- [6 MAINTENANCE](#)
- [7 Documents / Resources](#)
 - [7.1 References](#)



sensio SE34195C0 Diffused Slimline LED Mirror with Shaver Socket



Specifications:

- **Product Name:** Diffused Slimline LED Mirror with Shaver Socket 700×500
- **Product Wattage:** 31W
- **Cable Entry:** 169mm
- **IP Rating:** IP44
- **Demister Pad Size:** 280 x 500mm
- **Light Color Temperature:** 6000K

Product Usage Instructions

- **Installation:**

This product is suitable for installation in Zone 2 or higher, unless fitted with a shaver socket which must be located outside of Zones 0, 1, and 2. Consult a qualified electrician for installation.

- **Operation:**

Ensure that the sensor is placed a minimum of 150mm away from any object or surface to avoid interference.

- **Maintenance:**

- Disconnect power before cleaning.
- Periodically wipe the mirror with a cloth.
- Avoid using harsh chemical solvents to prevent damage to the finish.

Important Notes:

- Use an appropriate driver with sufficient max wattage.

- Avoid overloading the LED Driver.
- The Demister Pad is located at the center of the mirror and may take several minutes to fully clear the glass.

FAQ:

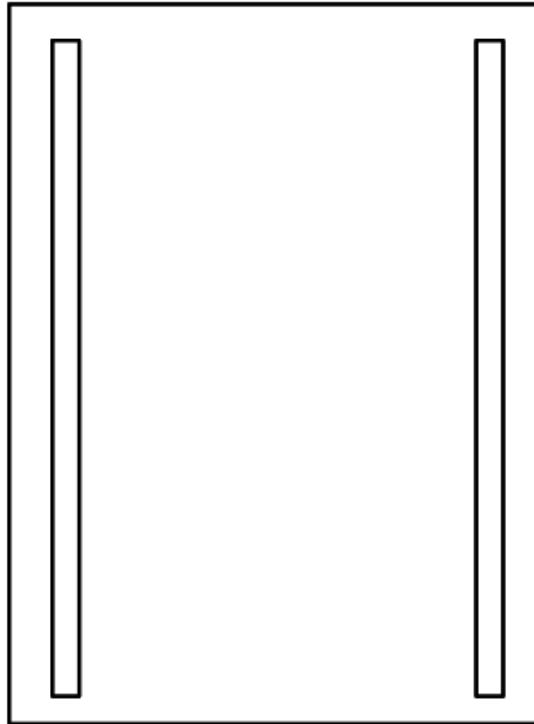
- **Q: Can this mirror be used in a bathroom?**

A: Yes, this mirror is suitable for indoor use, including bathroom installations.

- **Q: What is the recommended distance for placing the sensor?**

A: The sensor must be placed at least 150mm away from any object or surface to avoid interference.

Diffused Slimline LED Mirror with Shaver Socket 700×500

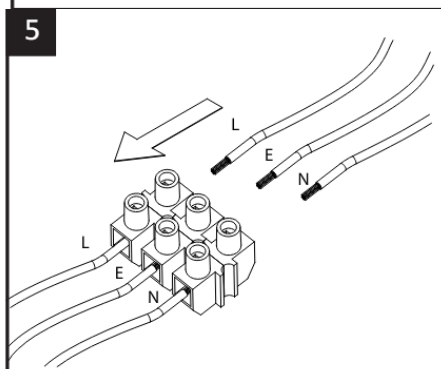
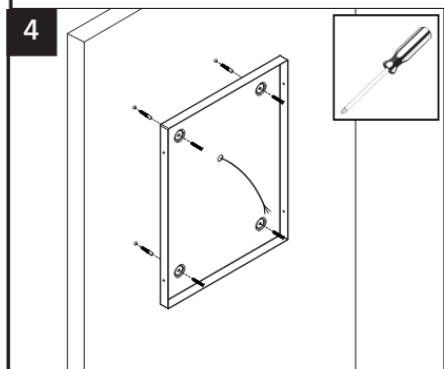
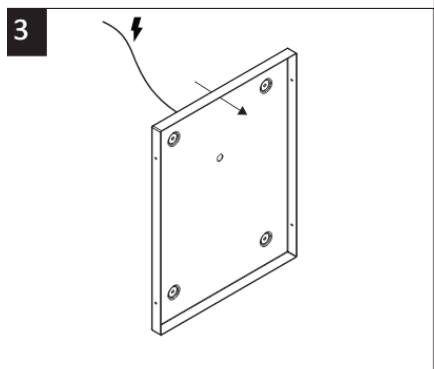
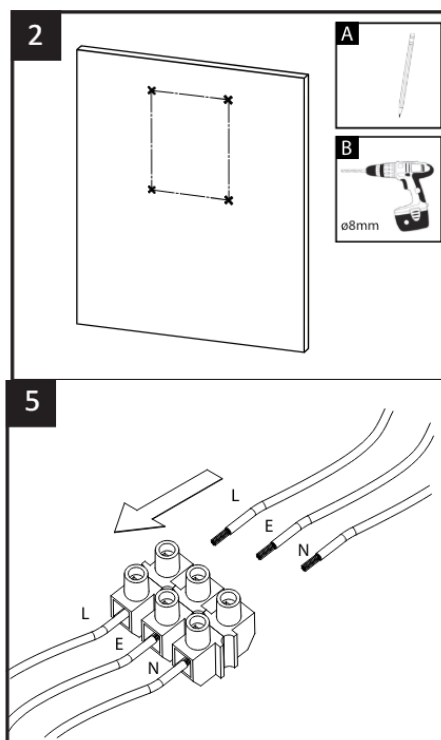
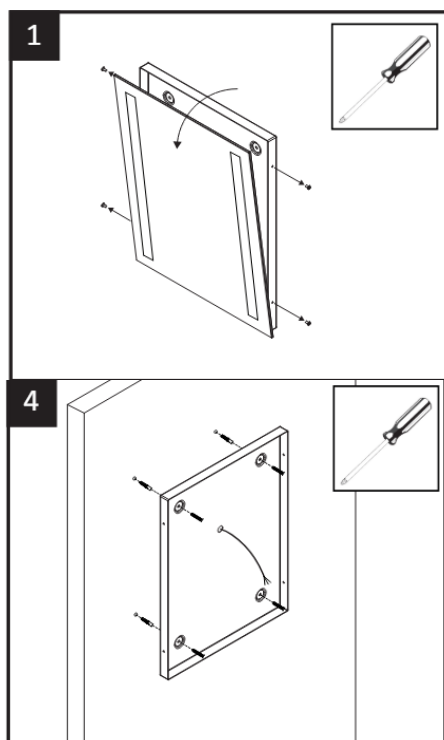
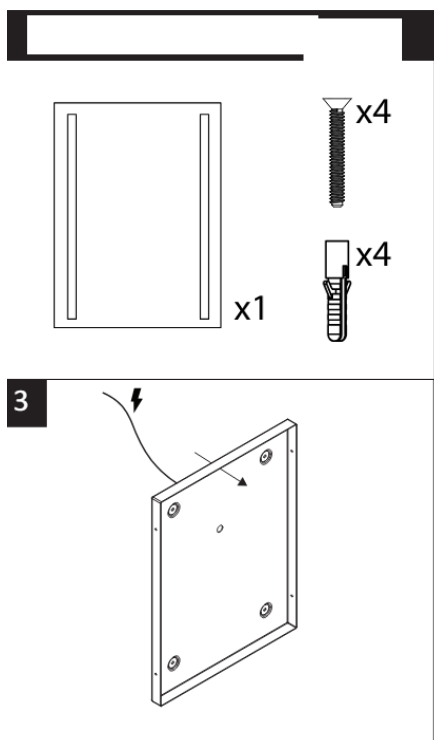


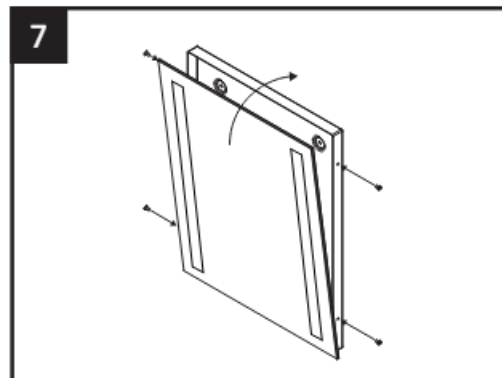
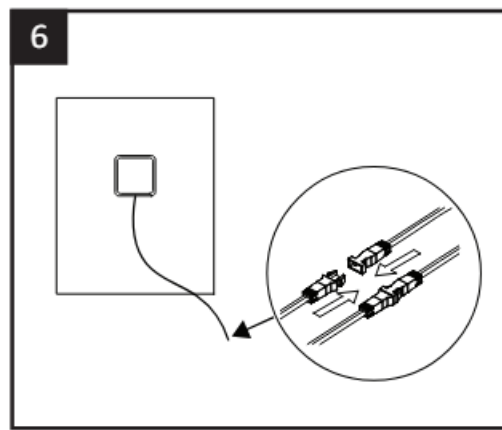
This product is suitable for installation in Zone 2 or higher, unless fitted with a shaver socket as this must be located outside of Zones 0,1 and 2.

Dimension

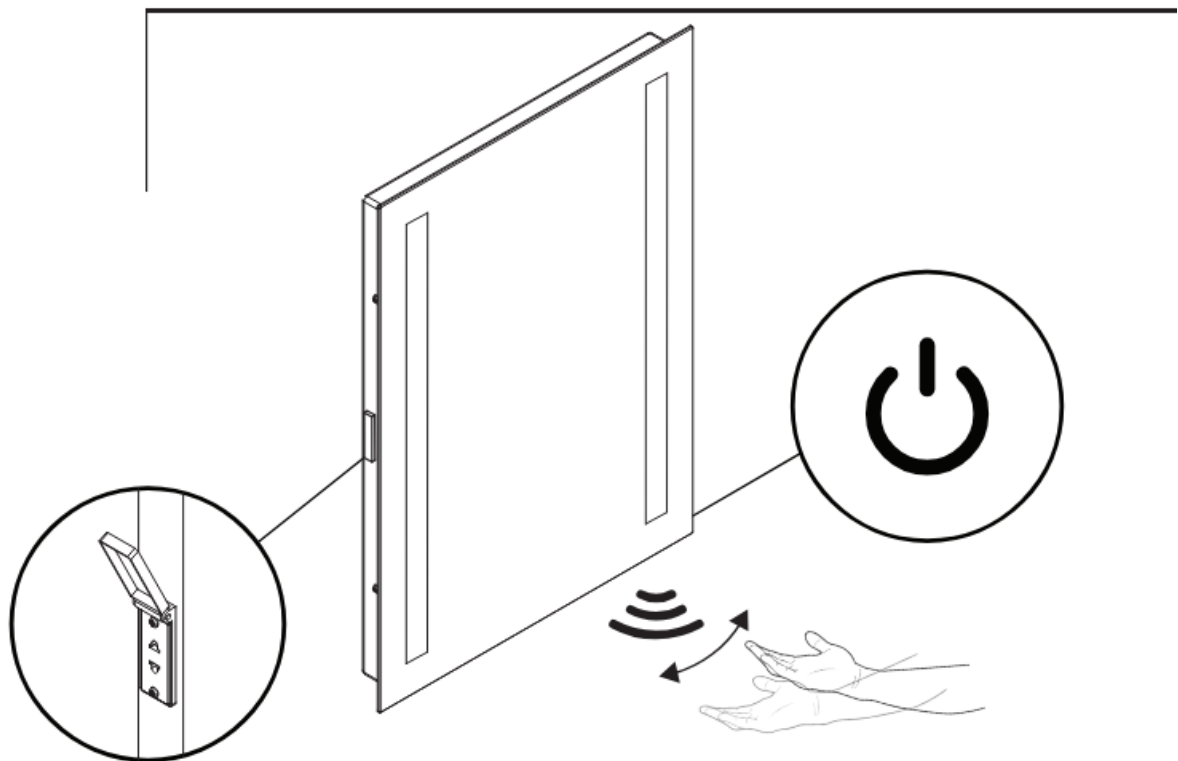


Included

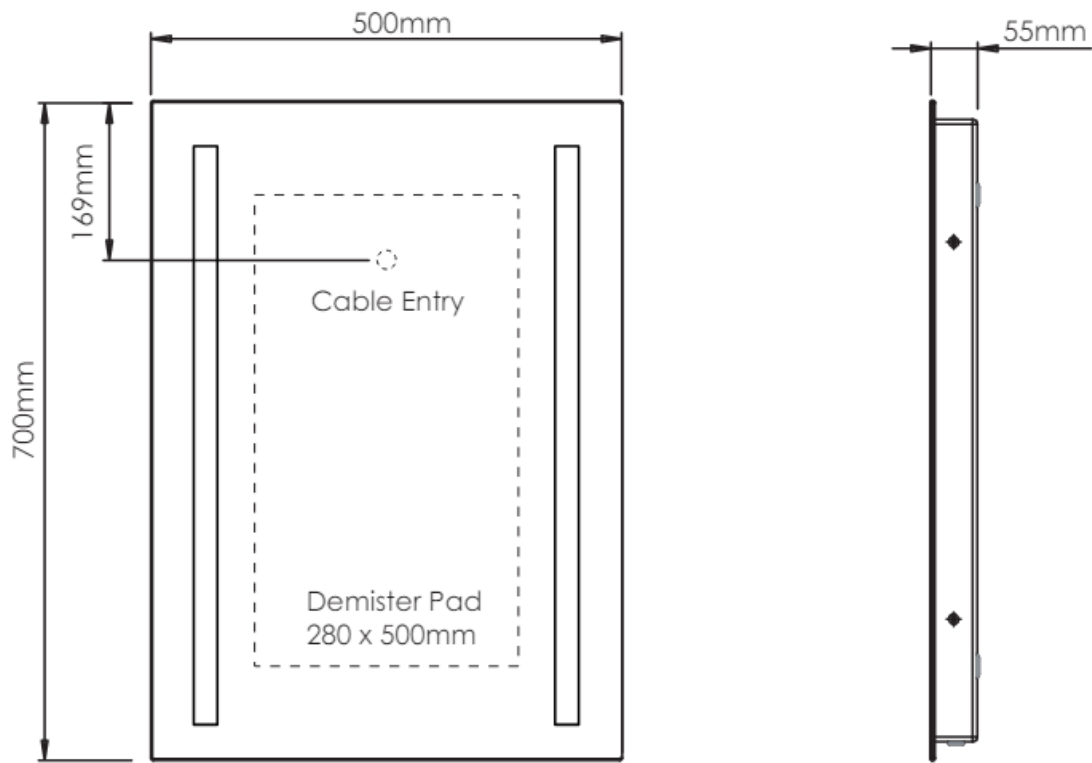




Operation



Caution: To avoid interference, the sensor must be placed a minimum of 150mm away from any object/surface



- **31W**
 - Product Wattage
- **IP44**
 - IP Rating
- **240V**
 - Input Voltage
- **6000K**
 - Colour temperature

WARNING:

Read these instructions carefully before proceeding. Keep these instructions in a safe place for future reference.

IMPORTANT:

We recommend that you consult a qualified electrician. All electrical Installation must be carried out in accordance with current IEE wiring regulations (BS7671).

SAFETY WARNINGS:

- These products must not be modified in any way or installed in any other way than dictated in these instructions.
- Any modifications may render the product unsafe and will void the products warranty.
- This product is for indoor use only.

WASTE ELECTRICAL & ELECTRONIC EQUIPMENT (WEEE)

The symbol on the product and/or accompanying document, the crossed out wheelie bin, indicates that this product may not be treated as household waste. Instead it should be handed over to the applicable collection point for the recycling of electrical and electronic waste.

MAINTENANCE

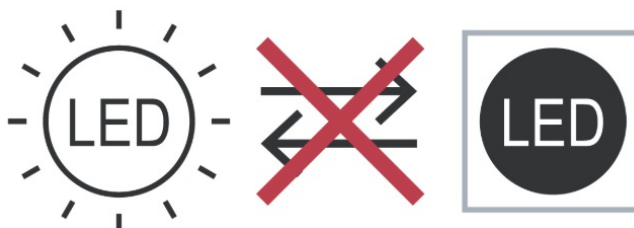
- Ensure that the power is disconnected prior to cleaning.
- Wipe over with a cloth periodically.
- Do not use harsh chemical solvents, this may dis-colour or damage the finish.

NOTE

- Please ensure you use an appropriate driver with an adequate max wattage.
- Do not overload the LED Driver.
- The Demister Pad is located in the centre of the mirror. The demist function may take several minutes to propagate to the outer edges of the mirror glass.




This product contains a light source of energy efficiency class G.
The light sources in this product are not removable.



UK Address: Sensio Ltd, Unit 7, Speedwell Road, Castleford, West Yorks, WF10 5PY

Documents / Resources

	<p>sensio SE34195C0 Diffused Slimline LED Mirror with Shaver Socket [pdf] Instruction Manual</p> <p>SE34195C0 Diffused Slimline LED Mirror with Shaver Socket, SE34195C0, Diffused Slimline LED Mirror with Shaver Socket, Slimline LED Mirror with Shaver Socket, LED Mirror with Shaver Socket, Mirror with Shaver Socket, Shaver Socket, Socket</p>
---	--

References

- [User Manual](#)

[Manuals+.](#) [Privacy Policy](#)

This website is an independent publication and is neither affiliated with nor endorsed by any of the trademark owners. The "Bluetooth®" word mark and logos are registered trademarks owned by Bluetooth SIG, Inc. The "Wi-Fi®" word mark and logos are registered trademarks owned by the Wi-Fi Alliance. Any use of these marks on this website does not imply any affiliation with or endorsement.