



Senseworld Technology DC100-HF-WIFI Non Contact Vital Monitoring Device User Manual

[Home](#) » [Senseworld Technology](#) » Senseworld Technology DC100-HF-WIFI Non Contact Vital Monitoring Device User Manual 

Contents

- [1 Senseworld Technology DC100-HF-WIFI Non Contact Vital Monitoring Device](#)
- [2 Introduction](#)
- [3 Use Guide](#)
- [4 Device Mounting](#)
- [5 FCC Statement](#)
- [6 Documents / Resources](#)
 - [6.1 References](#)
- [7 Related Posts](#)



Senseworld Technology DC100-HF-WIFI Non Contact Vital Monitoring Device



Introduction

1. Functional characteristics

- Monitoring the parameters of human vital signs(respiration, heart rate, human state, etc.)
- Non contact detection, long-distance detection, detection through clothing.
- The measurement data is transmitted to the mini program through WiFi.
- Low power consumption, low radiation power, high precision, simple interface and easy installation.

2. Monitoring parameters

1. Human state: absense, calm, quiet, small movements, continuous movements.
2. Respiratory rate: average number of breaths per minute.
3. Heart rate: average beats per minute.
4. Abnormal signs: apnea, low respiratory rate, high respiratory rate, low heart rate, high heart rate (pushed by official account).
5. The sleep analysis report of the previous night will be generated at 12:00 every day (pushed by official account).

3. Performances

1. Voltage: 12V
2. Power Consumption: less than 1W
3. Radiation: 0.05mW (about 0.1% of mobile phone radiation)

Device List

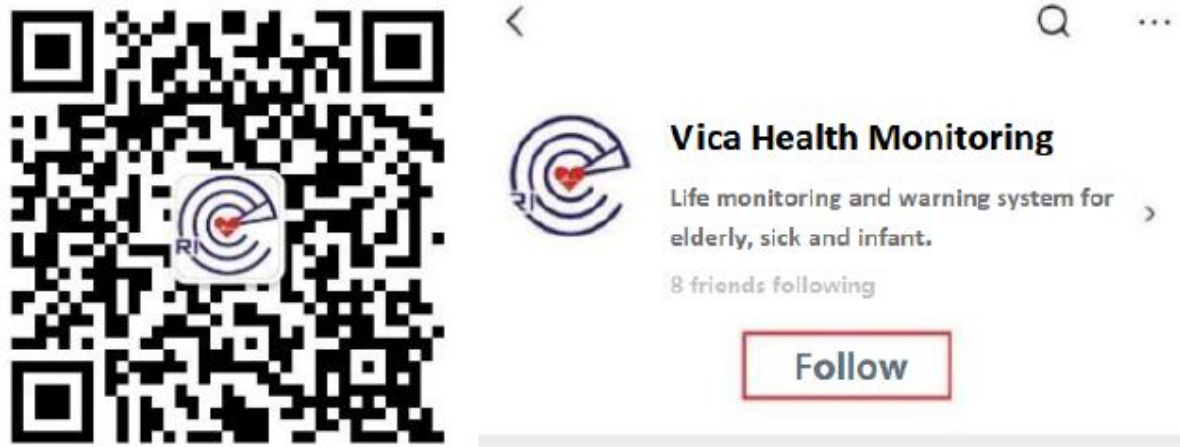
- Including: device *1,
- power adapter *1,
- installation accessories *1,
- user's manual *1

Use Guide

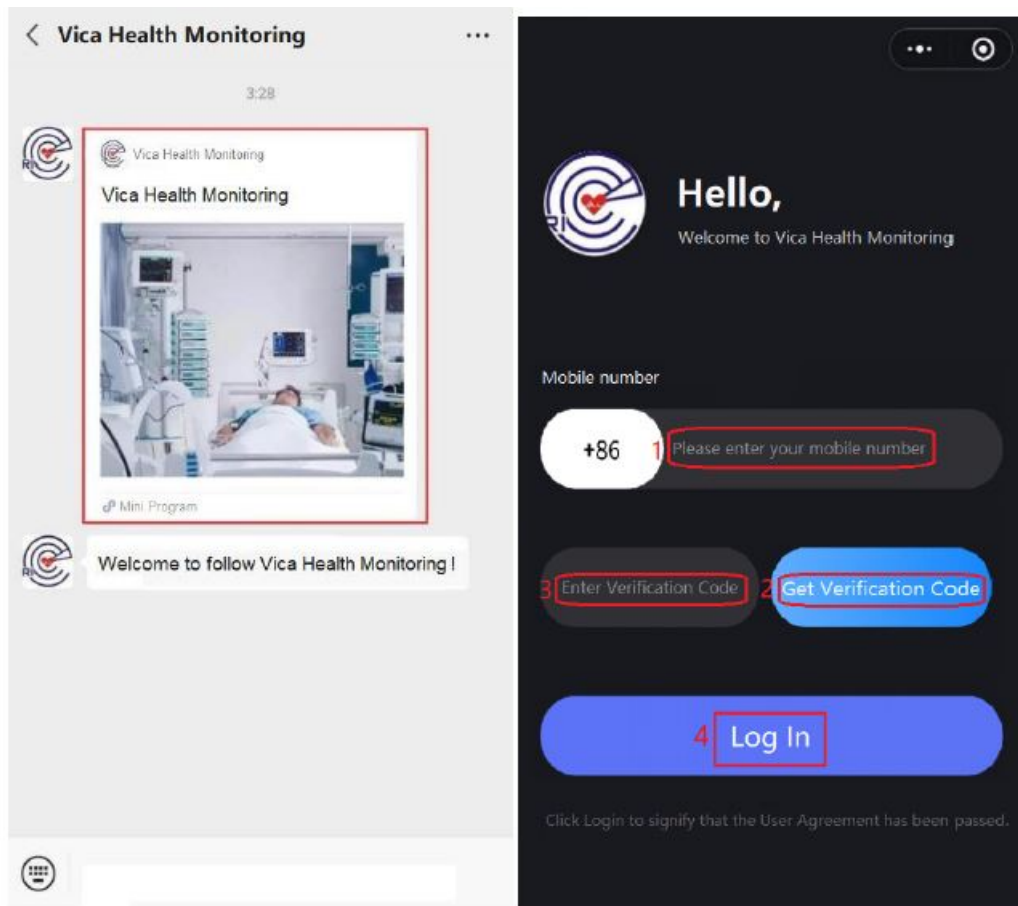
1. WeChat Mini Program

1. Follow the Official Account: open the mobile phone WeChat, scan the QR code below, then follow the

official account of “Vica Health Monitoring”.

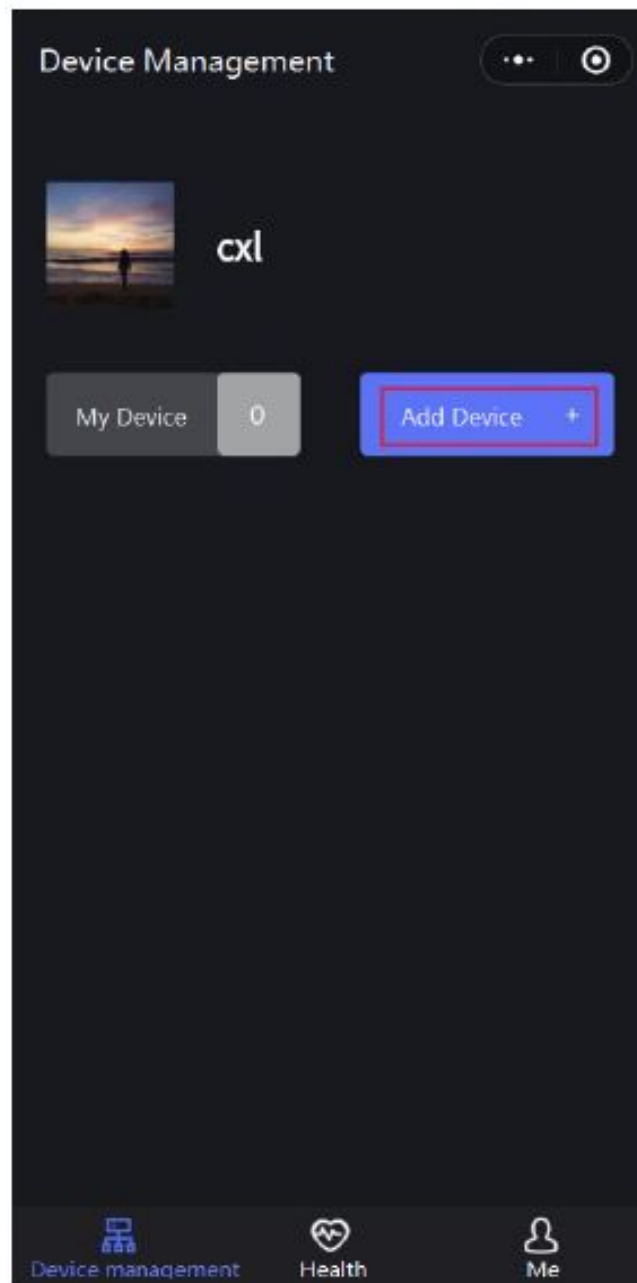


2. Minil Program Login: open the “Vica Health Monitoring” mini program pushed by the official account, enter the phone number and get the verification code to complete userlogin.

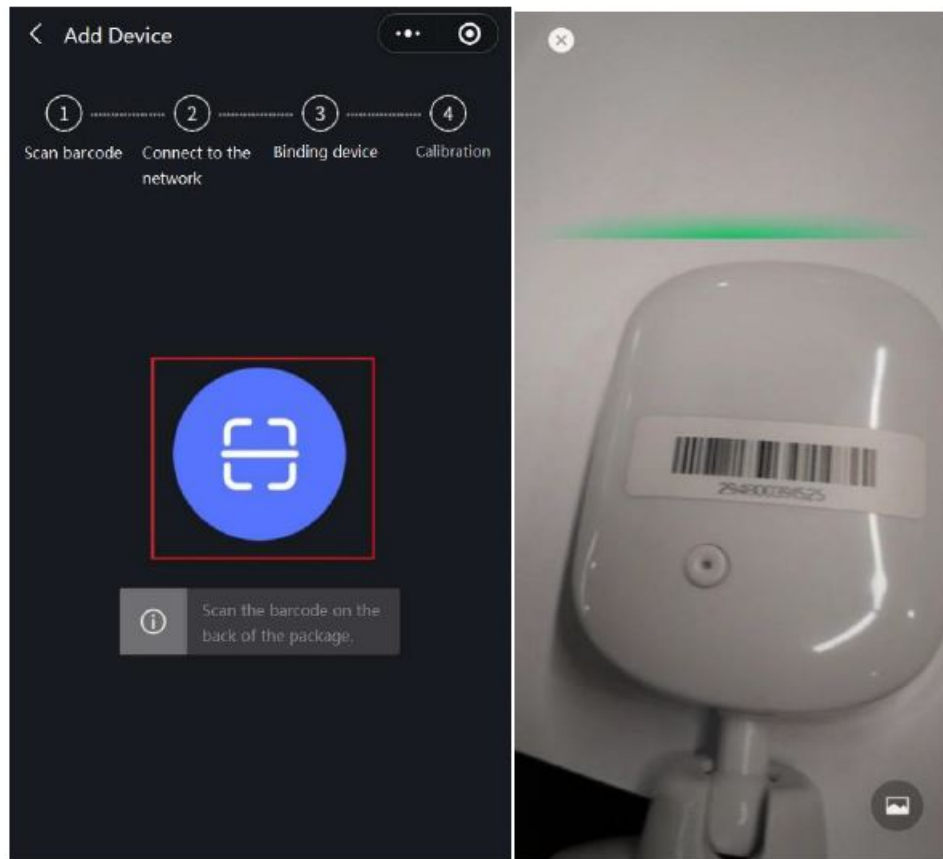


2. Add Device

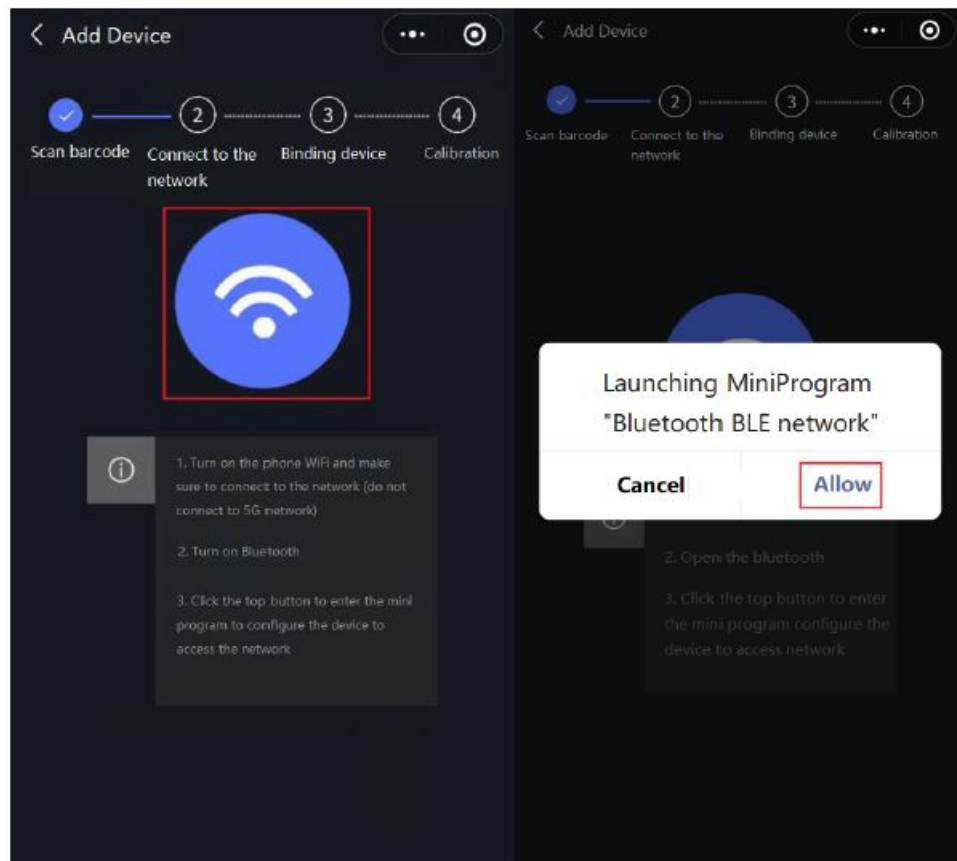
1. Click “Add Device” in the device management interface and add the device according to the operation prompts on the page.



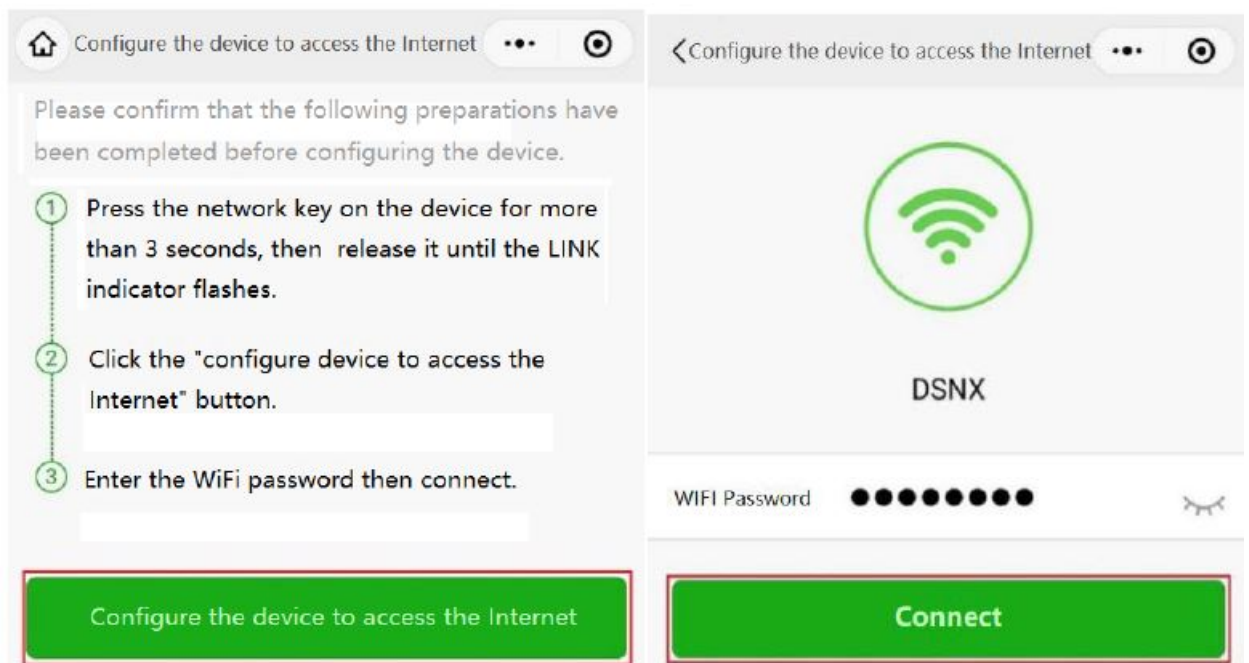
2. Click the “scan” icon, scan the barcode on the back/package of the device, then connect the network after recognition



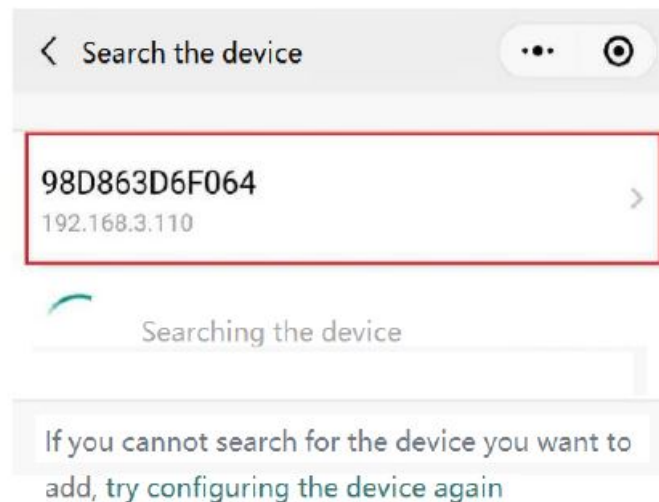
3. Make sure the mobile phone is connected to 2.4G WIFI and click the "Network" icon after turning on Bluetooth. Then the "Bluetooth BLE network" mini program will be opened soon and select "Allow".



4. Long press the reset button on the back of the device for more than 3 seconds, then release it until the red indicator light of the device flashes. Click "Configure the device to access the internet", and then enter the password of WIFI and click "Connect".



5. After successfully access to the network, you can search for the corresponding device, and click the MAC address of the device to enter the binding page.



6. In the device binding page, you need to fill in the information of the person being cared for and submit it after confirmation.

← Add Device

Progress: 1. Scan barcode, 2. Connect to the network, 3. Binding device, 4. Calibration

Device Information

Device ID: 30459a261901

Information of the care recipient

Name: Enter care recipient's name

Date of birth: >

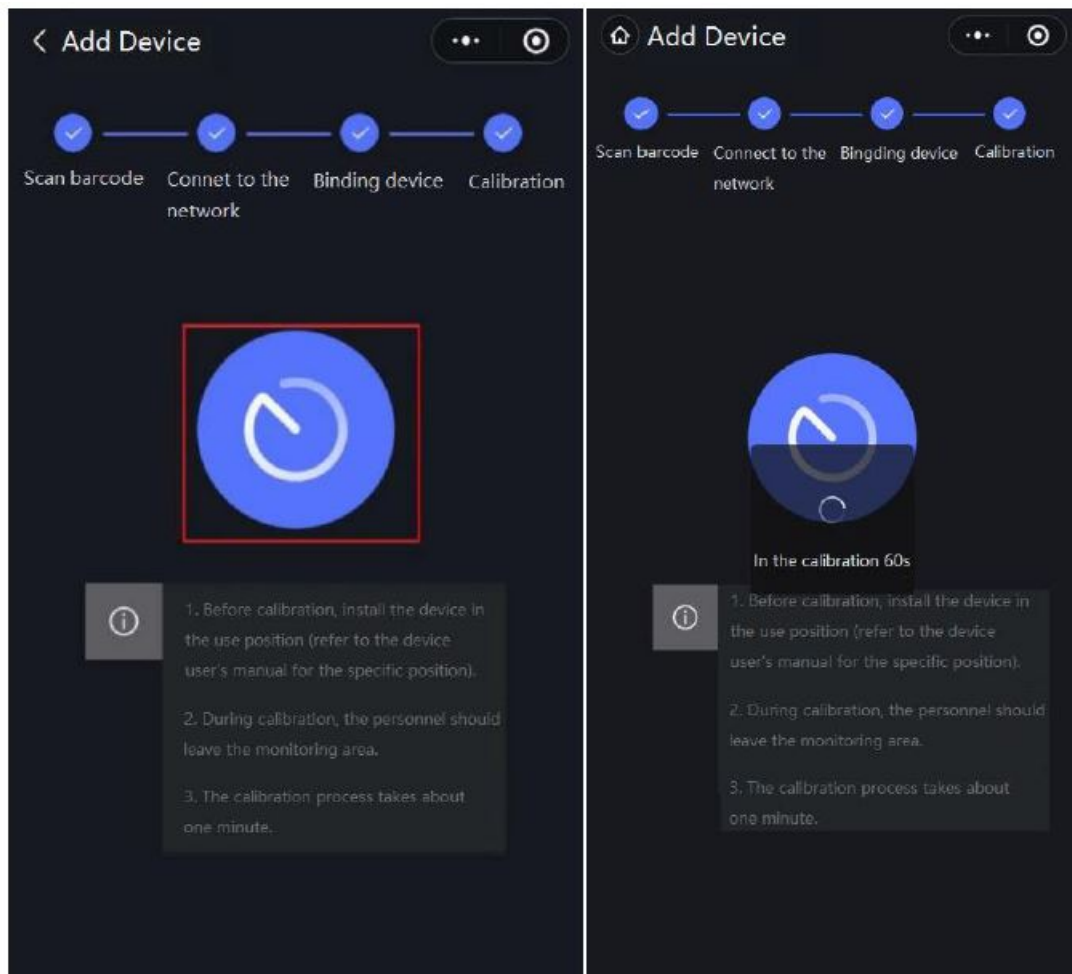
Mobile number: Enter mobile number

Gender: >

Relationship: >

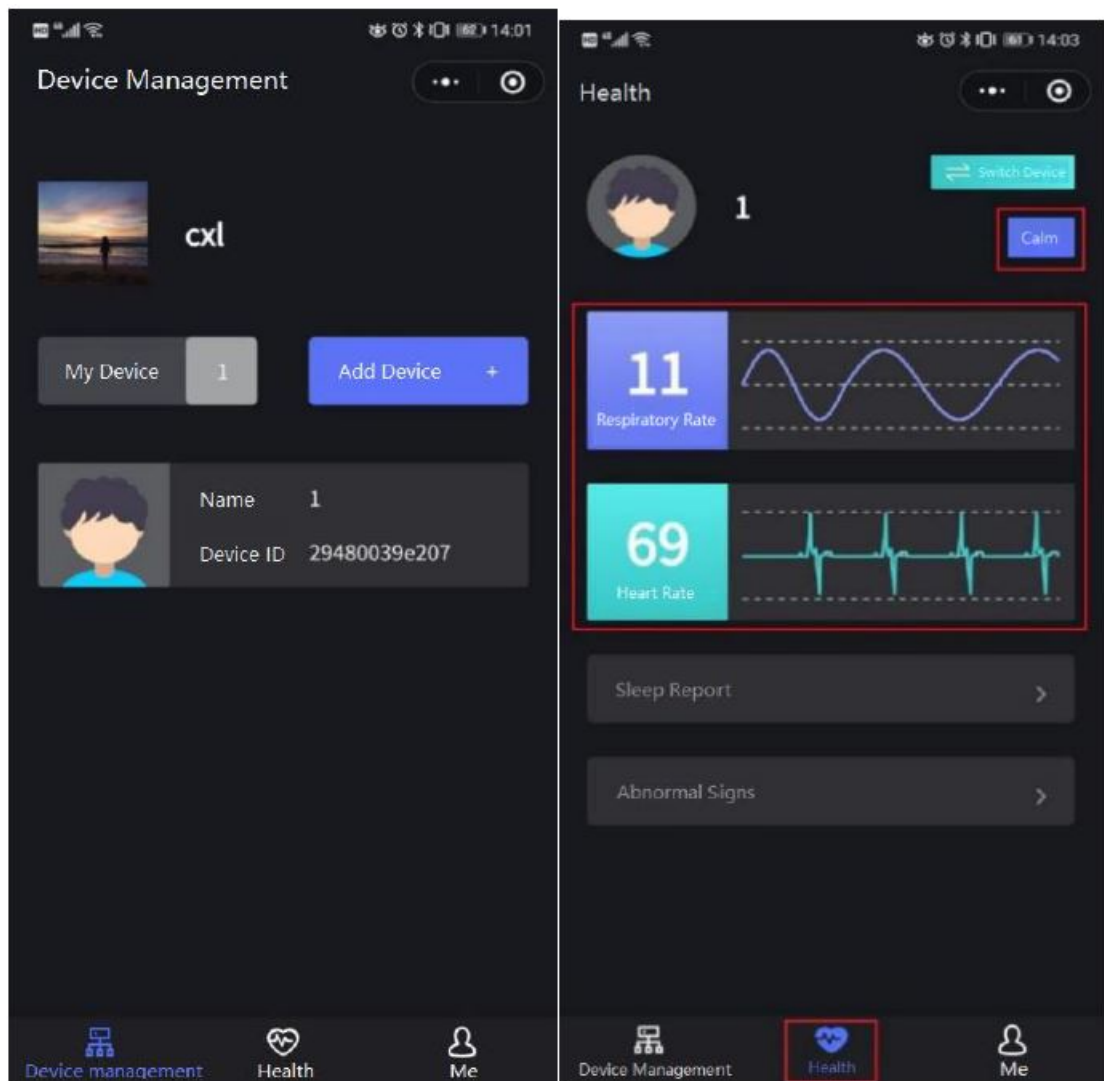
Confirm to submit

7. After binding the device, firstly install the device(refer to Device Installation for specific installation position and steps). Then click the “Calibration” icon when all people leave the monitoring area (3.5m away from the device). Calibration time is 60s with the blue indicator light of the device flashes.



3. ViewData

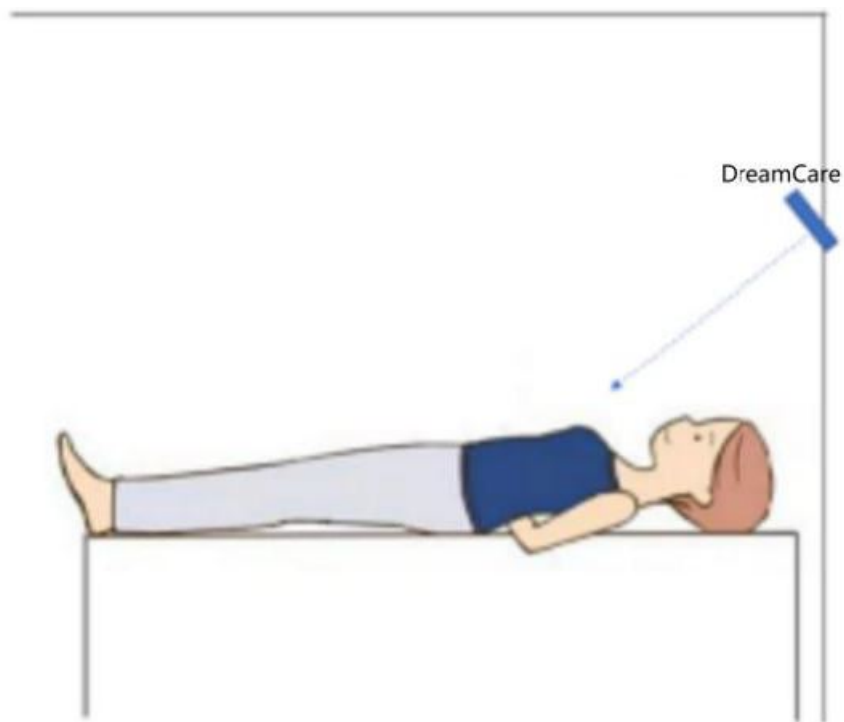
1. After the calibration is completed, the equipment shall be added to the device list.
2. Click “Health” page to see the monitoring data of the device.



Device Mounting

1. Installation Position

Mounted on the wall: keep the normal of the device point to the human chest, and the mounting height is 1-1.5m away from the bed (not the ground),as below.

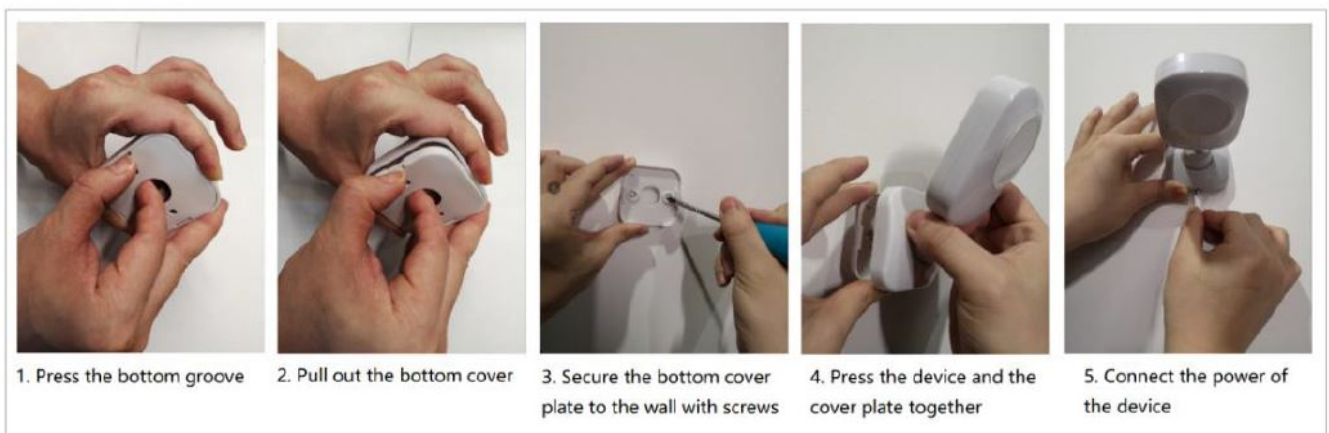


2. Installation Steps

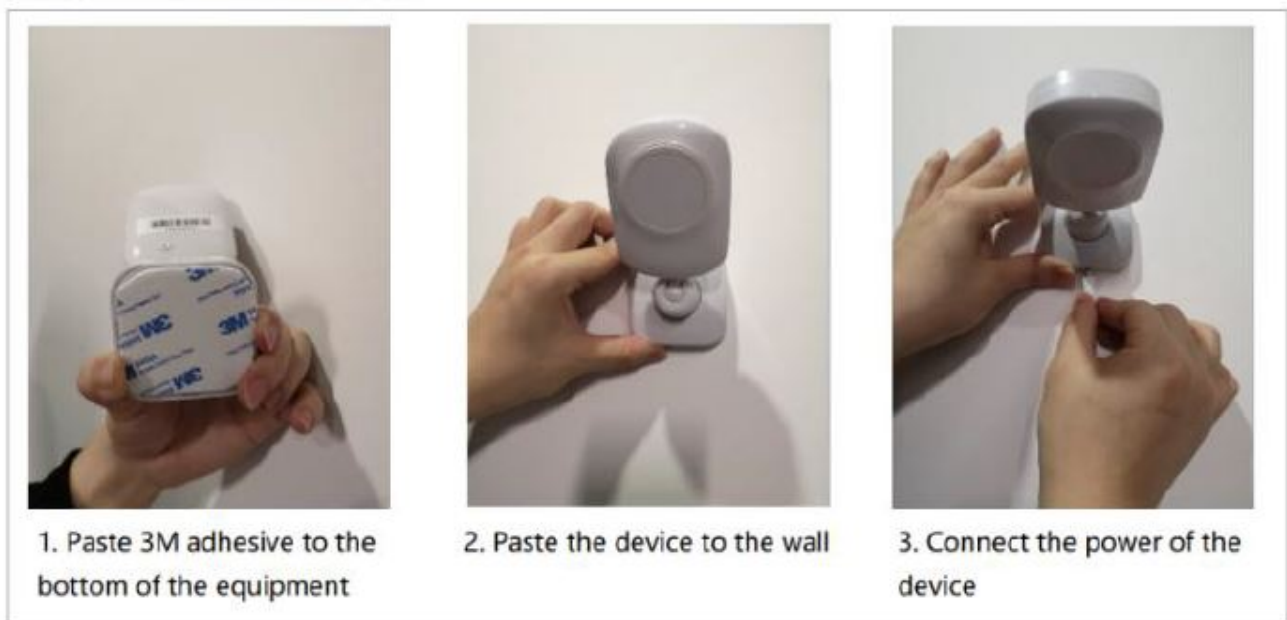
After determining the installation position, install and fix the device to the wall according to the following steps.

Installation method

1. screw fixation



2. 3M adhesive fixation



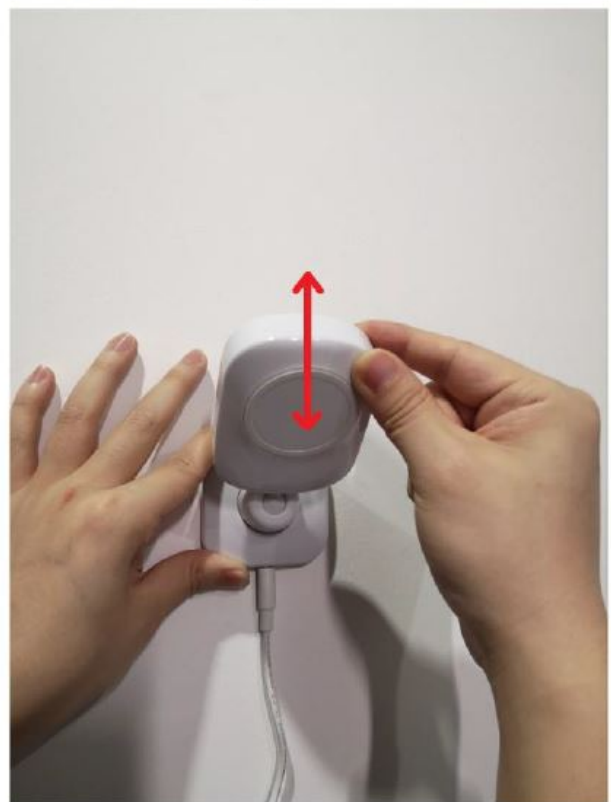
3. Monitoring Angle Adjustment

For optimal monitoring performance, the device should be aligned with the human chest.

1. Turn the bottom knob to adjust the detection direction



2. Shake the device to adjust the detection Angle



Notes

1. Calibration shall be carried out after the first installation or the device is moved, and all people shall leave the monitoring area during calibration.
2. The real-time heart rate and respiratory rate can only be displayed normally after people entering the monitoring range of the device and keep quiet for 1 minute.
3. If the mini-program interface is updated, please refer to the actual interface.
4. If the monitoring data is abnormal, recalibrate the device.

5. Ensure that the device is installed stably without loosening and shaking.
6. Metal objects will interfere with the monitoring effect, avoid metal objects in the device detection area.
7. Monitoring of heart rate and respiratory rate is best when the person is peaceful.

FCC Statement

FCC Statement

This device complies with part 15 of the FCC rules.

Operation is subject to the following two conditions:

1. this device may not cause harmful interference, and
2. this device must accept any interference received, including interference that may cause undesired operation.

Warning: Changes or modifications not expressly approved by the party responsible for compliance could void the user's authority to operate the equipment.

This equipment may only be operated indoors. Operation outdoors is in violation of 47 U.S.C. 301 and could subject the operator to serious legal penalties.

NOTE: This equipment has been tested and found to comply with the limits for a Class B digital device, pursuant to part 15 of the FCC Rules. These limits are designed to provide reasonable protection against harmful interference in a residential installation. This equipment generates uses and can radiate radio frequency energy and, if not installed and used in accordance with the instructions, may cause harmful interference to radio communications. However, there is no guarantee that interference will not occur in a particular installation. If this equipment does cause harmful interference to radio or television reception, which can be determined by turning the equipment off and on, the user is encouraged to try to correct the interference by one or more of the following measures:

- Reorient or relocate the receiving antenna.
- Increase the separation between the equipment and receiver.
- Connect the equipment into an outlet on a circuit different from that to which the receiver is connected.
- Consult the dealer or an experienced radio/TV technician for help.

The device has been evaluated to meet general RF exposure requirement. This equipment should be installed and operated with minimum distance between 20cm the radiator your body: Use only the supplied antenna.

SenseWorld Technology Co. Limited


Address: Room 618, Building 1, Xiangyuzhihui, No. 579, North Chezhan Road, Kaifu District, Changsha, Hunan, CN

Contact: 0086-073185360006

E-mail: sales@senseworld.com.cn

Website: <http://www.senseworld.com.cn>

Documents / Resources

	<p>Senseworld Technology DC100-HF-WIFI Non Contact Vital Monitoring Device [pdf] User M anual</p> <p>DC100-HF-WIFI, DC100HFWIFI, 2AW3Y-DC100-HF-WIFI, 2AW3YDC100HFWIFI, DC100-HF-WIFI Non Contact Vital Monitoring Device, DC100-HF-WIFI, Non Contact Vital Monitoring Device</p>
---	---

References

-  [_____](#)