



sensei SPS-DS Cut-To-Size LCD Screen Protector Kit User Manual

[Home](#) » [Sensei](#) » sensei SPS-DS Cut-To-Size LCD Screen Protector Kit User Manual 



Cut-to-Size LCD Screen Protector Kit



Thank you for choosing Sensei.

Congratulations on the purchase of your Sensei Cut-to-Fit LCD Screen Protector Kit. This cut-to-fit screen protector is designed to protect your device's LCD screen from scratches, dust, and smears. It's easy to apply and remove, it adheres to the LCD screen without leaving behind any sticky residue, and the paper backing includes printed grid lines to help you custom-fit the screen protector to the exact size you need. Please read these instructions carefully before applying your Sensei Cut-to-Fit LCD Screen Protector.

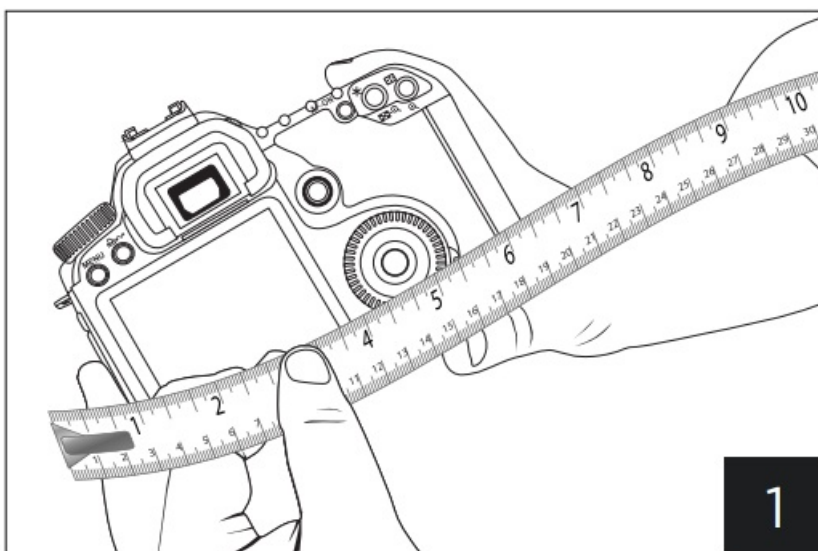
Contents

- [1 Instructions](#)
- [2 Features](#)
- [3 Box Contents](#)
- [4 Documents / Resources](#)
- [5 Related Posts](#)

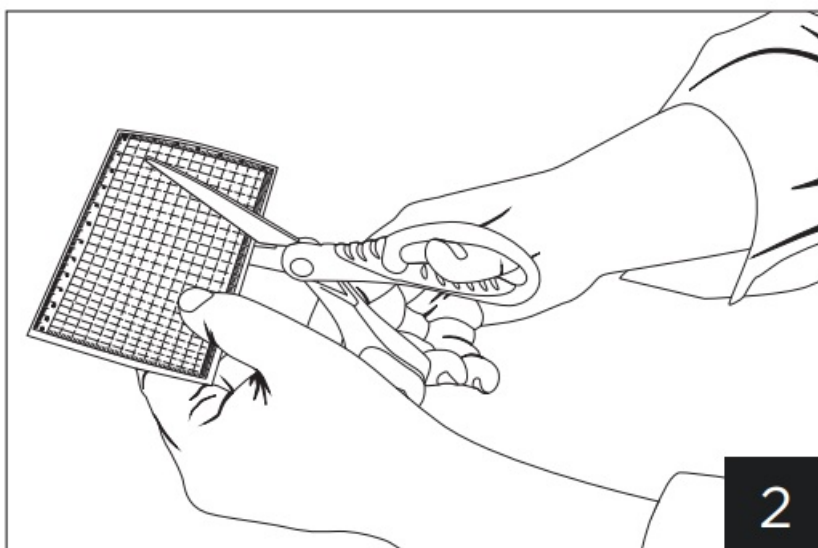
Instructions

Before applying your Cut-to-Size LCD Screen Protector, you must determine the size of your camera's LCD screen.

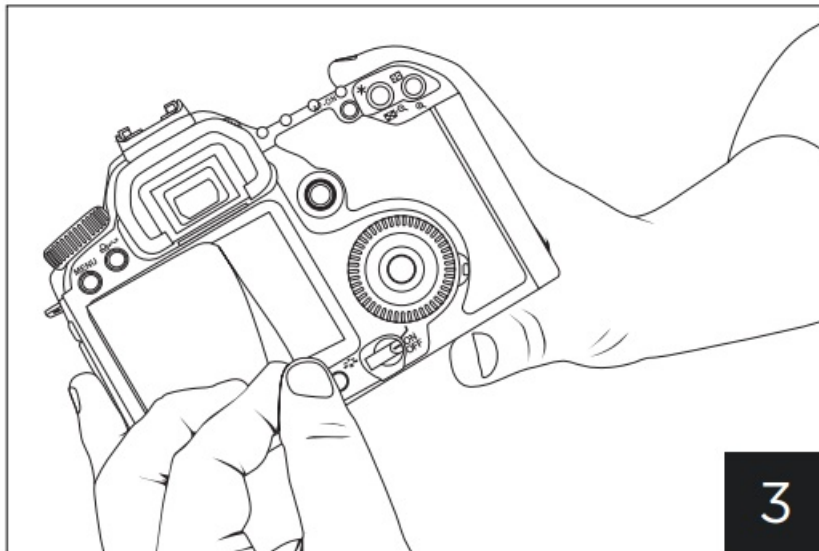
1. Measure the height and width of your device's LCD screen in millimeters.



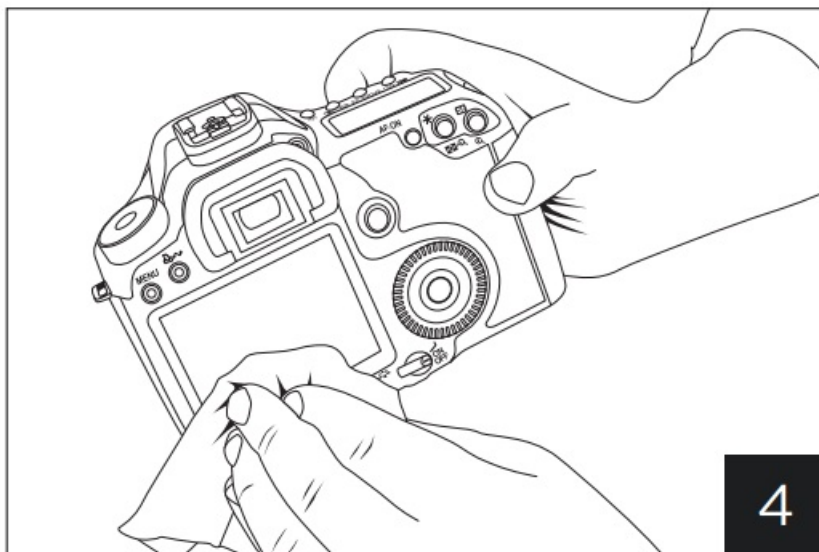
2. Using a pair of scissors or a razor and a straight edge, trim the screen protector along the guidelines that correspond to your camera's LCD size.



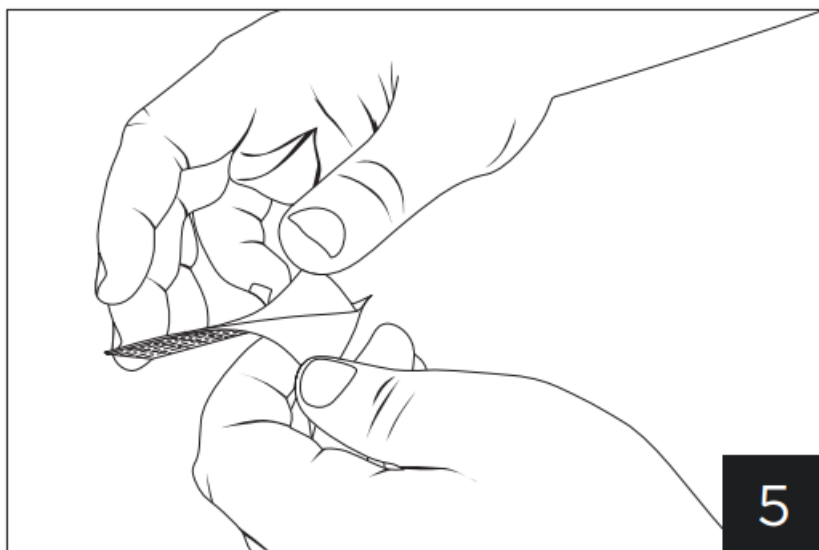
3. Remove all films or other intervening substances from your camera's LCD.



4. Clean the LCD with the included wet wipe, and then wipe it dry with the dry wipe. Be sure to remove all dust and fingerprints.

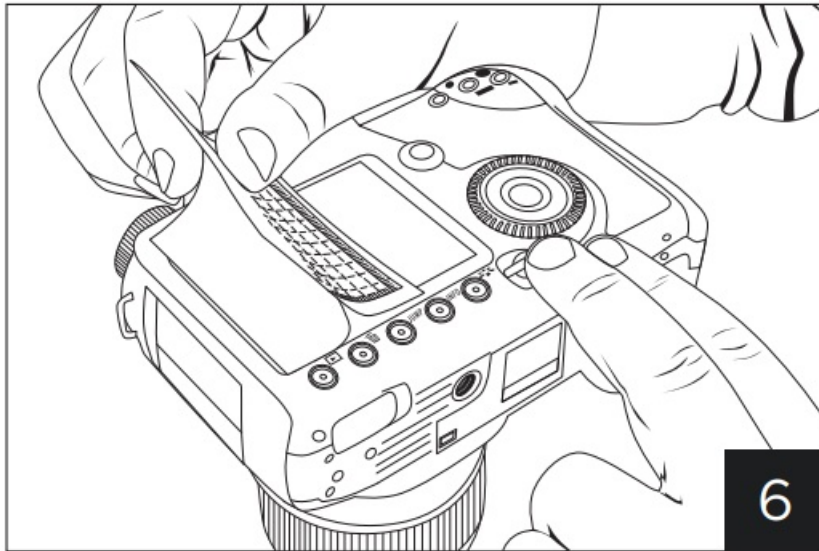


5. Partially peel off the backing from the screen protector. Be careful not to get any fingerprints on the exposed side of the screen protector.

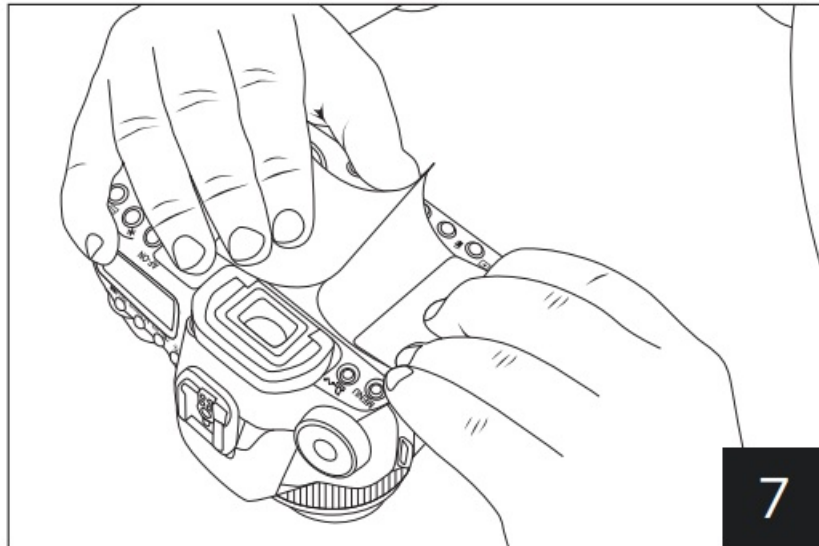


6. Make sure your camera is on a stable surface, and align the screen protector with the camera's LCD.

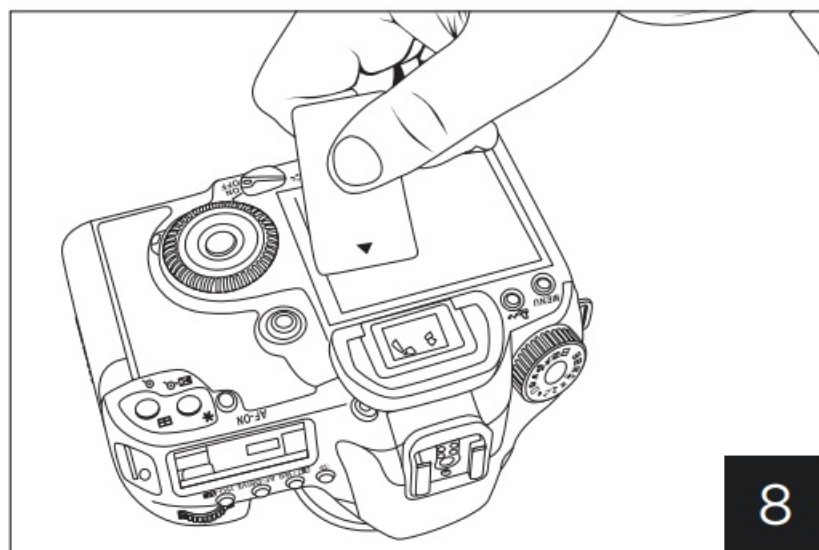
Tip: Turning on the LCD will make it easier to see the edges when aligning the screen protector.



7. Hold the backing of the screen protector up while gently pushing 6 down on the screen protector with the included applicator card. As you push the applicator card along the camera's LCD to apply the screen protector, the backing will gradually peel off.



8. Use the applicator card to smooth out any remaining air bubbles by pushing them to the edge of the screen protector.



Features

- Protects against fingerprints, mudges, and scratches
- Static backing for easy application and removal
- Transparent film maintains full clarity of LCD

Box Contents

- Twelve (12) screen protectors
- Three (3) wet wipes
- Three (3) dry wipes
- Applicator card

Fits LCD screens up to 6 × 12 cm (2.36 × 4.72 in.)

See instructions inside on how to apply the LCD Screen Protector.

For more information, visit www.MadeBySensei.com or call

Customer Service at 212-594-2353.

Sensei is a registered trademark of the Gradus Group.

© 2022 Gradus Group LLC. All Rights Reserved.

www.MadeBySensei.com

Made in China



GG3

Documents / Resources



[sensei SPS-DS Cut-To-Size LCD Screen Protector Kit](#) [pdf] User Manual
SPS-DS, Cut-To-Size LCD Screen Protector Kit