



# SX1302-US915 M2 Multi-Platform Gateway and SenseCAP Sensors Instruction Manual

[Home](#) » [SENSECAP](#) » SX1302-US915 M2 Multi-Platform Gateway and SenseCAP Sensors Instruction Manual 

## Contents

- [1 SX1302-US915 M2 Multi-Platform Gateway and SenseCAP Sensors](#)
- [2 Product Information](#)
- [3 Product Usage Instructions](#)
- [4 Gateway Network Configuration](#)
- [5 Bind the gateway](#)
- [6 Connect the SenseCAP Sensors](#)
- [7 SenseCAP Portal and Mate APP](#)
- [8 Documents / Resources](#)
- [9 Related Posts](#)

# SX1302

**SX1302-US915 M2 Multi-Platform Gateway and SenseCAP Sensors**



## Product Information

The SenseCAP is a multi-platform gateway and sensor system that allows users to monitor and collect data from various environmental sensors. The system consists of the SenseCAP M2 Multi-Platform Gateway and SenseCAP Sensors. It provides a convenient and efficient solution for environmental data collection and analysis.

## Product Usage Instructions

### Gateway Network Configuration

To configure the network settings of the SenseCAP M2 Multi-Platform Gateway, follow these steps:

#### Connect to Ethernet Cable

1. Connect the antenna and power adaptor to the gateway.
2. The power LED will show in red.
3. Wait for about 15 seconds for the indicator on the top to flash green, indicating that the gateway is booting.
4. Connect the Ethernet cable to the Ethernet port.
5. The indicator on the top will show solid green if the gateway is successfully connected to the internet.

#### Connect to WIFI via Luci

To connect to WIFI using Luci, you have two options:

##### Access via router

1. Connect your device to an Ethernet cable and connect your PC to the same router.
2. Check the IP Address of your device on your router admin page.
3. Find the Username and Password on your device label.
4. In your browser, enter the IP Address of your device to access the Luci page.
5. Enter your device username and password to login.

##### Access via device AP hotspot

1. Turn on the device AP hotspot by pressing the button for 5 seconds until the blue indicator flashes slowly.
2. Connect your computer to the AP hotspot named SenseCAP\_XXXXXX (6-figure MAC address). The default password is 12345678.
3. Find the Username and Password on your device label.
4. In your browser, enter the IP Address (192.168.168.1) to access the Local Console.
5. Enter your device username and password, and click the Login button.

### Connect to a WIFI

1. Click on Network – Wireless.
2. Click on the Scan button to scan for available WIFI networks.
3. Select your WIFI network to join.
4. Submit the Wi-Fi password and click Submit and Save.
5. Click Save and Apply to apply your settings.
6. The indicator on the top will show solid green if the gateway is successfully connected to the WIFI.

### Connect with Cellular (for 4G version)

1. Plug your SIM card into the Nano-SIM card slot.
2. Login to the Luci page and click on Network – Cellular.
3. Setup the APN info and click Save and Apply to apply your settings.

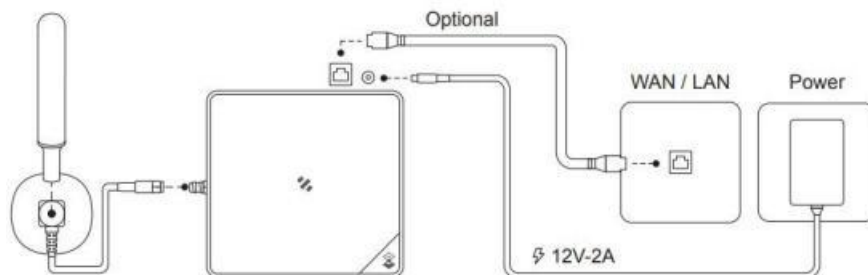
### POE connection

The SenseCAP M2 Multi-Platform Gateway supports PoE (Power over Ethernet) and is compatible with the IEEE 802.3af standard.

### Gateway Network Configuration

Connect the antenna and power adaptor to the gateway.

The power LED will show in red, and in about 15s, the indicator on the top will flash green, indicating that the gateway is booting.



There are two ways to connect to the Internet. Choose the one that works for you.

### Connect to Ethernet Cable

Connect the Ethernet cable to the Ethernet port, and the indicator on the top will show solid green if the gateway

is successfully connected to the internet.

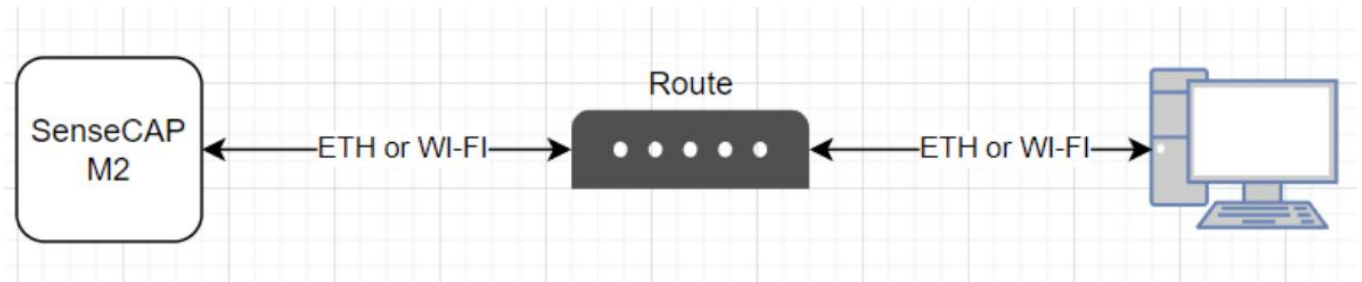
### Connect to WIFI via Luci

There are two ways for users to login Luci configuration page.

#### Access via router

- **Step 1:** Connect your device to a Ethernet cable, and connect your PC to the same router.

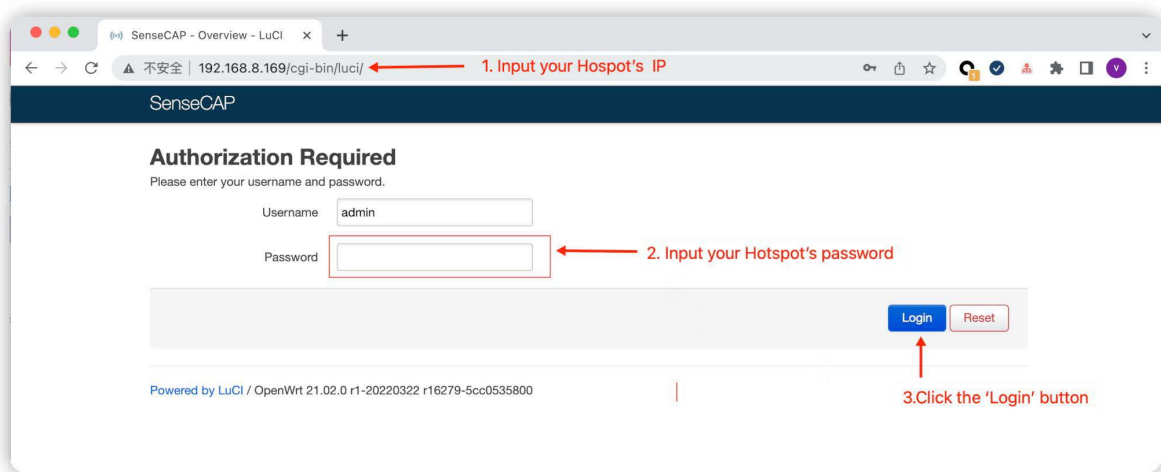
**Note:** Your PC and device should be connected to the same router/network.



- **Step 2:** Get IP Address of your device  
Check the IP Address of your device on your router admin page.
- **Step 3:** Get your device Username and Password  
You can find the Username and Password on your device label.



- **Step 4:** Login Luci
- Input the IP Address of your device in a browser to enter the Luci page. Then input your device username and password to login.



## Access via device AP hotspot

- **Step 1:** Turn on the device AP hotspot.

Press the button for 5s until the blue indicator flashes slowly to enter the configuration mode.

- **Step 2:** Connect to the AP hotspot.

AP hotspot name is SenseCAP\_XXXXXX (6-figure MAC address), default password is 12345678; connect your computer to this AP hotspot.



- **Step 3:** Get your device

Username and Password You can find the Username and Password on your device label.



- **Step 4:** Log in to the Local Console

Input the IP Address (192.168.168.1) in your browser to enter the Local Console. Then input your device username and password, and click the Login button.

**Authorization Required**

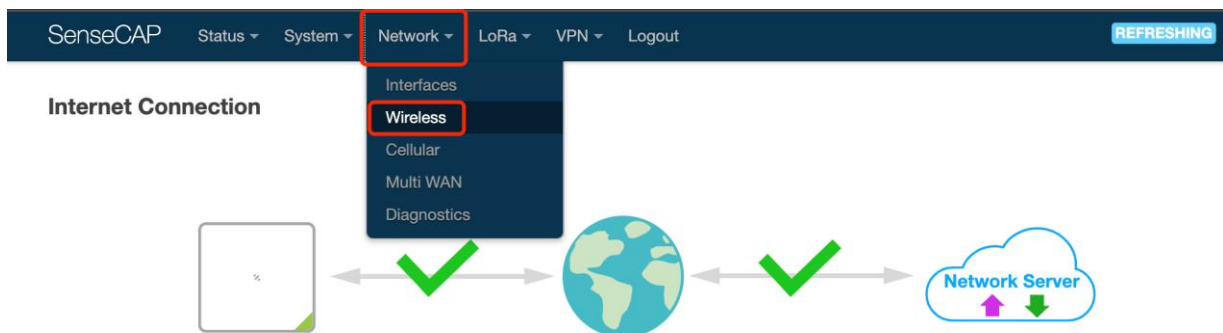
Please enter your username and password.

Username

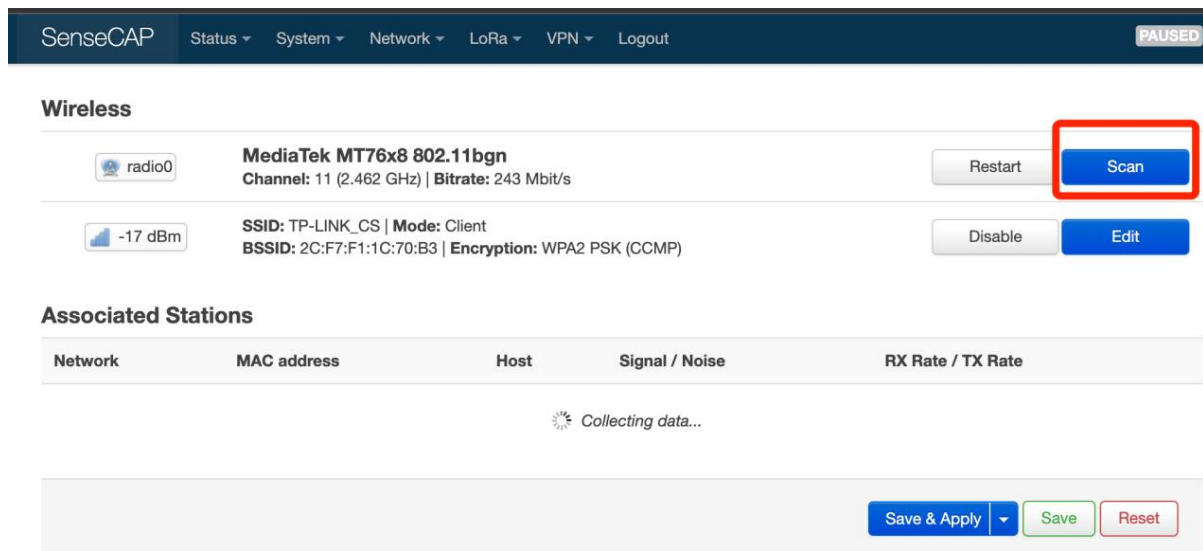
Password

[Login](#)[Reset](#)**Connect to a WIFI**

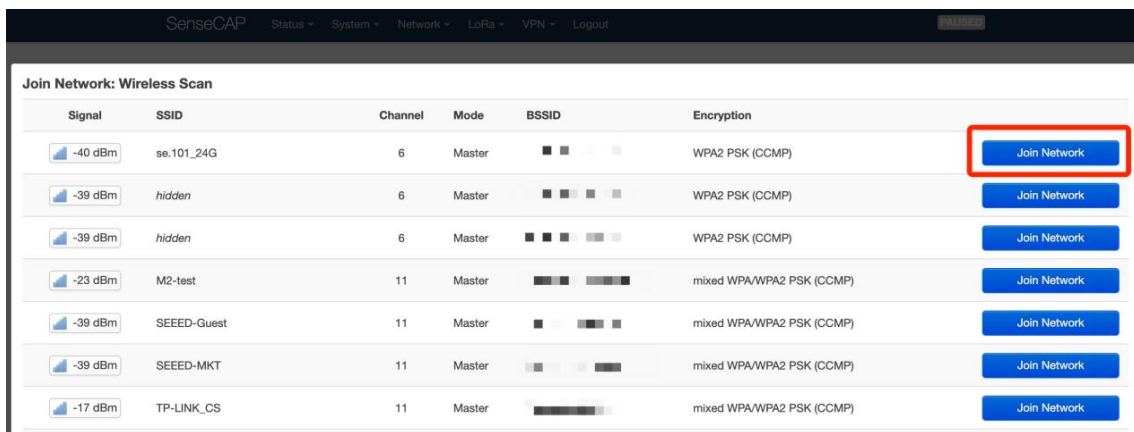
Click on Network – Wireless



Click on the Scan button to scan the WIFI



Select your WI-FI to join the network.



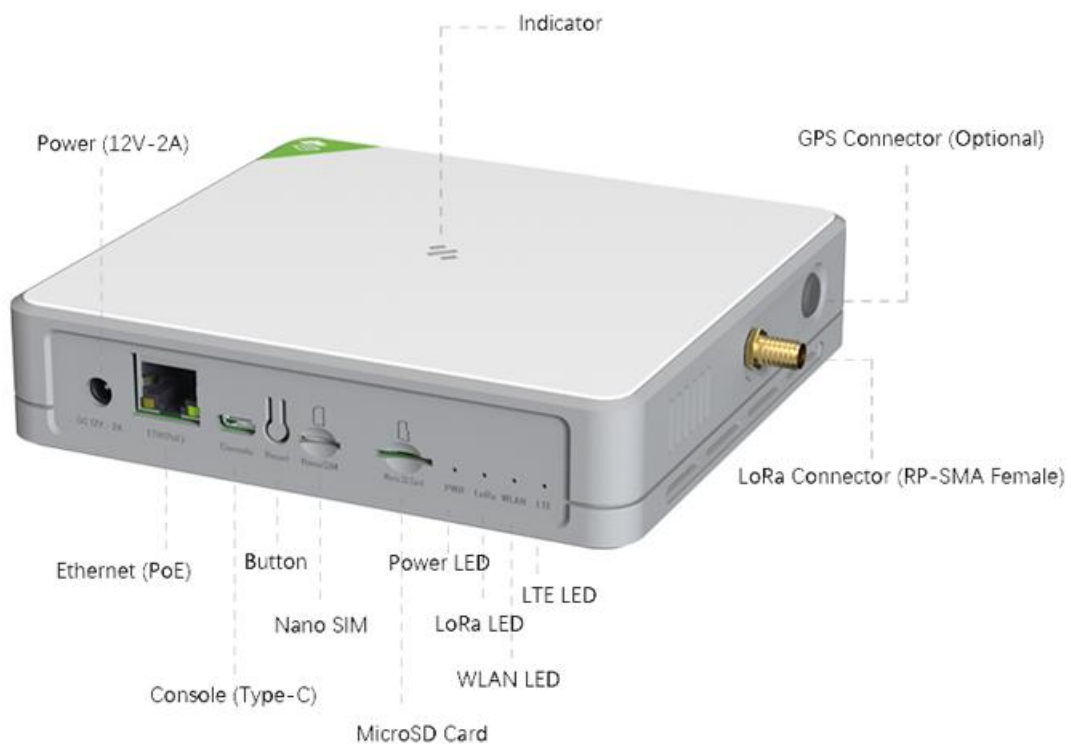
Submit the Wi-Fi password, and then click Submit and Save.

Then click Save and Apply to apply your settings.

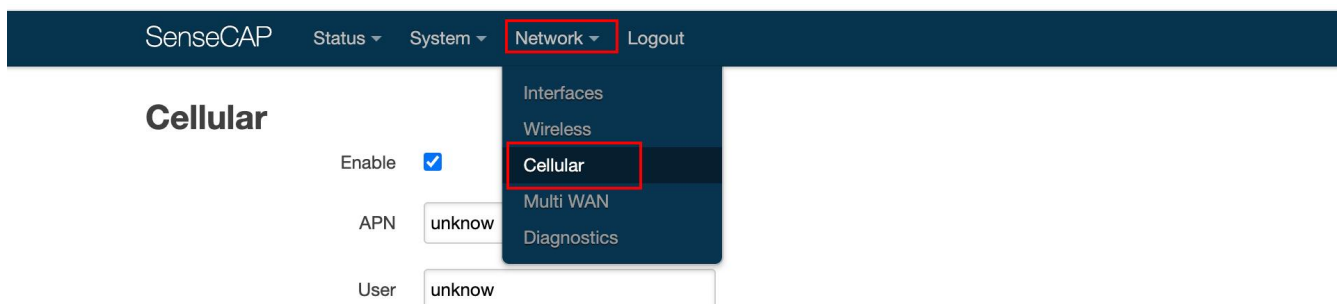
The indicator on the top will show solid green if the gateway is successfully connected to the WIFI.

### Connect with Cellular(for 4G version)

- **Step 1:** Plug your SIM card into the Nano-SIM card slot



- **Step 2:** Login the Luci page, and click on Network – Cellular'



- **Step 3:** Setup the APN info, and click Save and Apply to apply your settings.

## Cellular

Enable ☒

APN unknow

User unknow

Auth unknow

Password .....

Pincode .....

Save &amp; Apply ▾

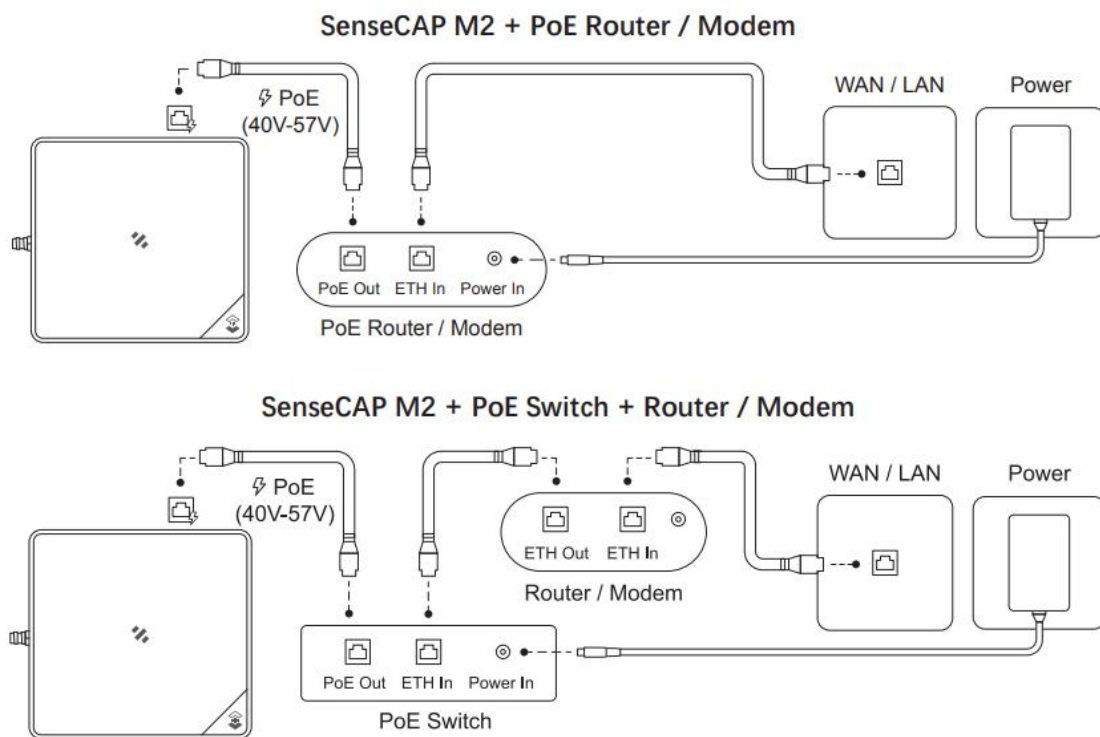
Save

Reset

Powered by LuCI / OpenWrt 21.02.0 r1-20230423 r16279-5cc0535800

## POE connection

SenseCAP M2 supports PoE (Power on Ethernet) and is compatible with IEEE 802.3 af standard. Note: You will need to have an extra PoE switch that provides 40V-57V DC power as a PSE (Power Sourcing Equipment) if your modem/router does not support PoE.



Checking the Gateway Connection Status After powering on the gateway, there are two ways for you to check the gateway working status::

## LED Indicator



Mode		Description
Green	Solid	Gateway is healthy and the internet is well connected.
	Slow blinking	Gateway is booting, please wait.
Blue	Solid	The gateway is ready for internet connection. Further configuration is needed.
	Slow blinking	Configuration mode, and will auto exit after 5 mins if no activity.
	Fast blinking	Press the button for 30 s until the indicator show fast flash will trigger the factory reset.
Orange	Slow blinking	Firmware is updating, and please do not power off the gateway or disconnect the internet.
White	Solid	Gateway is only with a factory firmware, and will be updated to the latest firmware automatically when it is connected to the internet.
Red	Solid	Hardware issue or internet connection failure.
	Slow blinking	Gateway not connected to the LNS.

### SenseCAP Mate APP

In the SenseCAP Mate App, “Online status” indicates “Online” when the gateway is connected to the network and can receive and transfer sensor data. Please refer to the next chapter for obtaining the SenseCAP App.

### Bind the gateway

SenseCAP Mate APP supports device configuration and remote management.

- **Step 1:** Download the SenseCAP Mate APP

SenseCAP Mate APP for iOS on App Store

SenseCAP Mate APP for Android on the Google Play Store

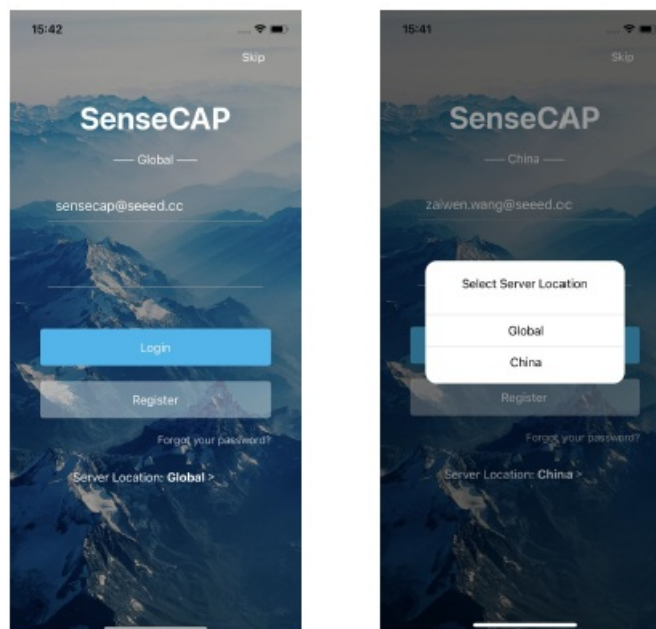
You can also download App from App Center



### Download SenseCAP Mate App

- **Step 2:** Login the APP

If it is your first time to use the SenseCAP platform, please register an account first.

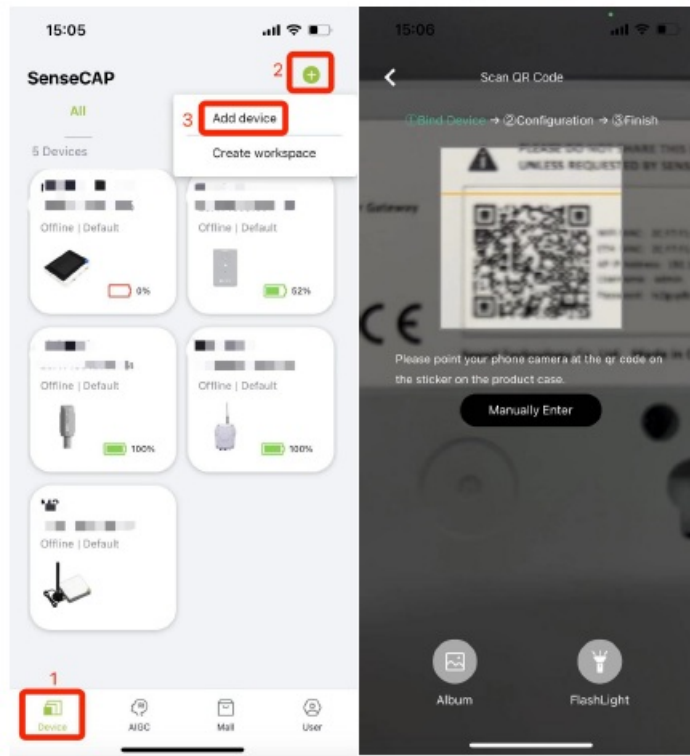


**Note:** Please select Global of Server Location

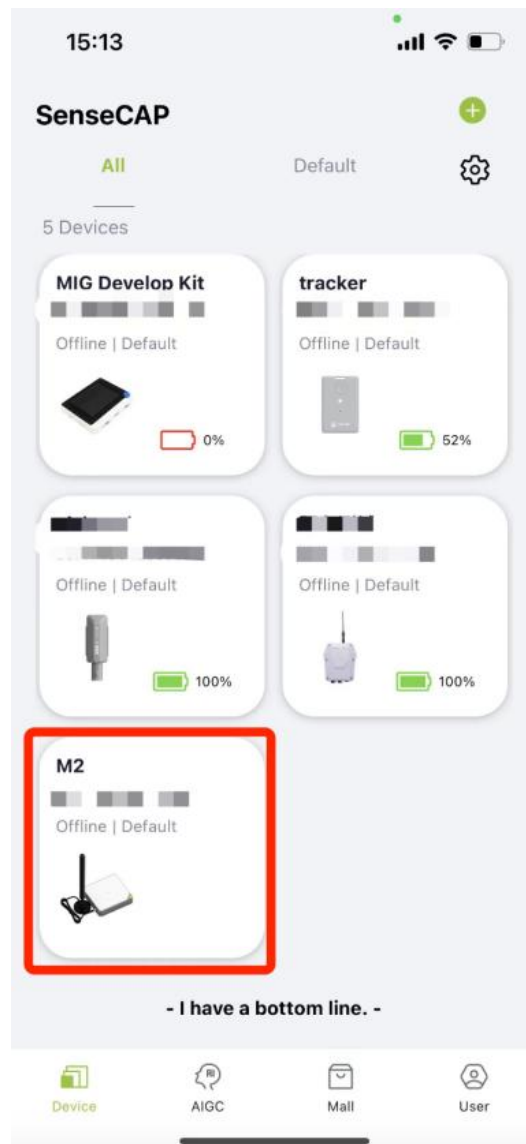
- **Step 3:** Add device

Click the + in the upper right corner and select Add device

Then scan the QR code on your gateway label.



Set up your device name and location. Then confirm your settings. After successful binding, you will see your gateway in the Device directory.

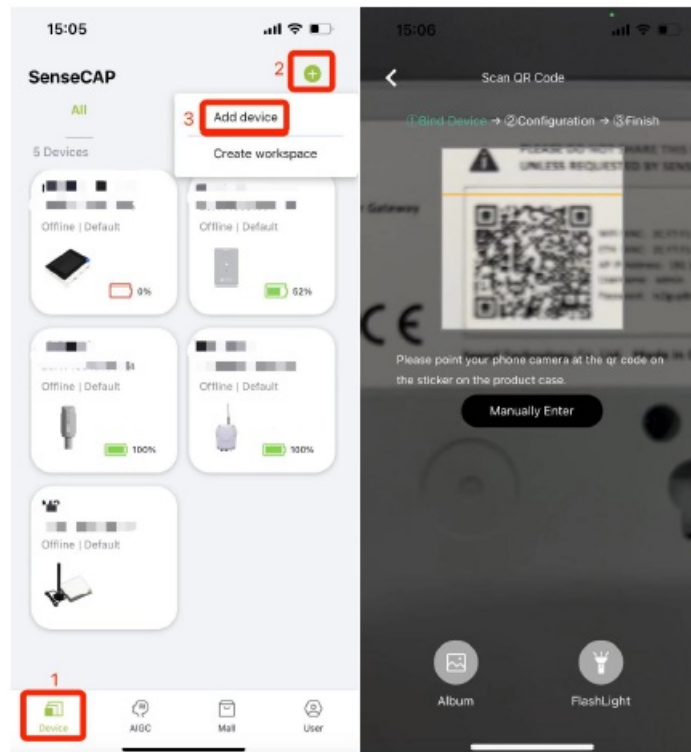


## Connect the SenseCAP Sensors

- **Step 1: Add device**

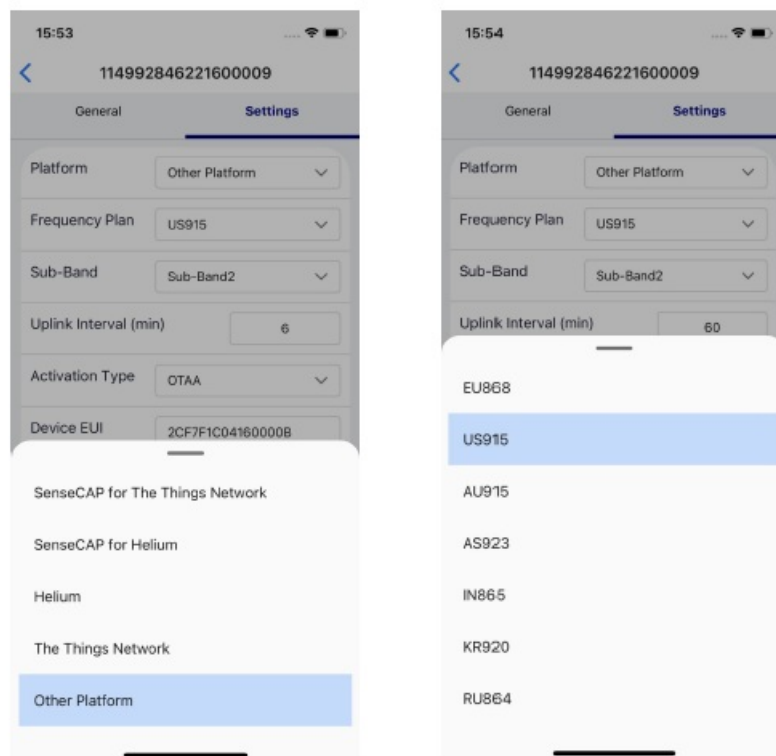
Click the + in the upper right corner and select Add device

Then scan the QR code on your gateway label.



- **Step 2: Select the frequency plan**

Click on “Settings”, set the platform and frequency, the frequency should match your gateway frequency. eg: If your gateway is US915 version , then you need to set your sensor to US915 frequency.



**Note:** Sense CAP M2 Multi-Platform Gateway can't connect to Helium network.

For more configurations about Sense CAP sensors, please refer to: Sense CAP Sensor

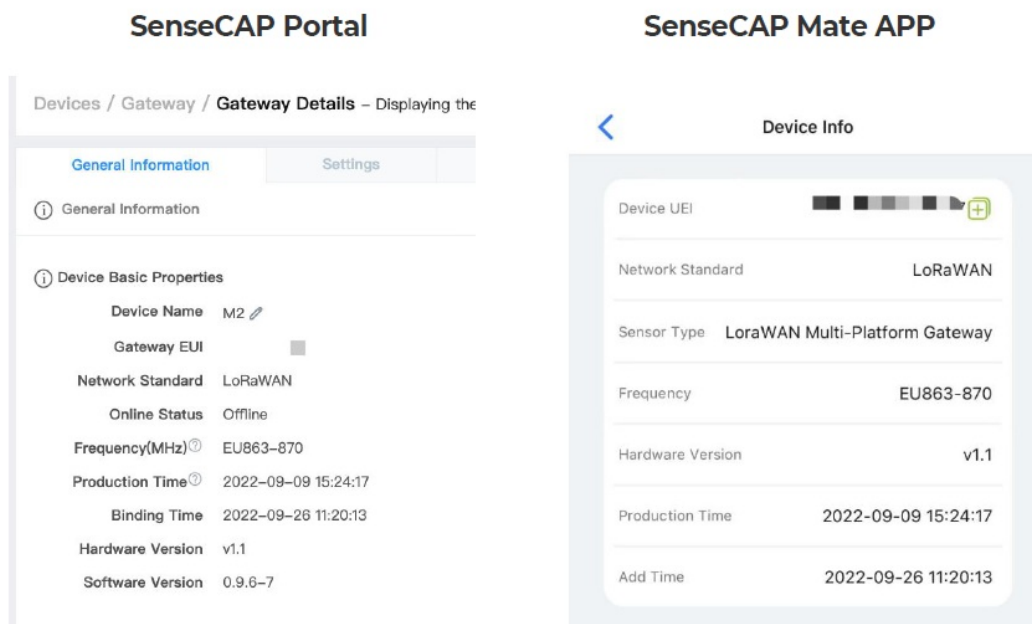
## SenseCAP Portal and Mate APP

SenseCAP Mate APP and SenseCAP Portal can be used to check your device status and device management.

- SenseCAP Mate APP for iOS on App Store
- SenseCAP Mate APP for Android on the Google Play Store
- SenseCAP Portal

### Gateway Info

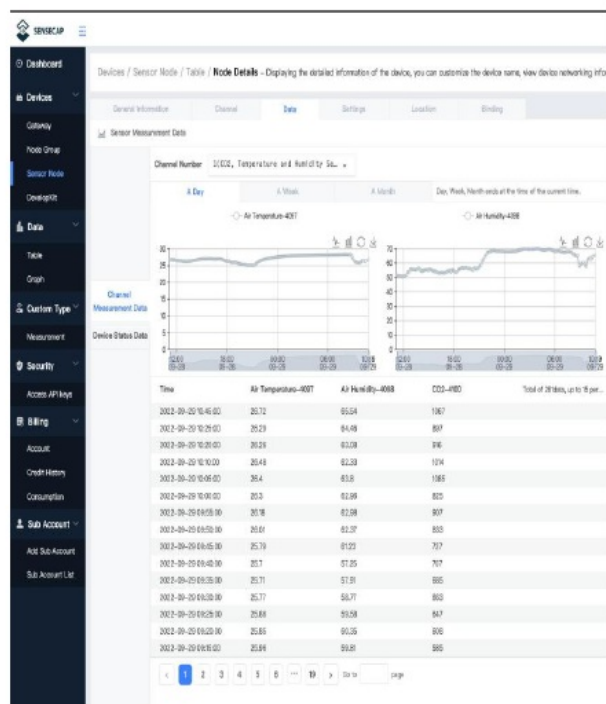
Check the gateway info on the SenseCAP Portal and SenseCAP MateAPP



### Sensor data

Check the sensor data on the SenseCAP Portal and SenseCAP Mate APP

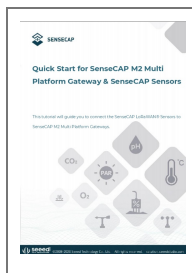
## SenseCAP Portal



## SenseCAP Mate APP



## Documents / Resources



[SENSECAP SX1302-US915 M2 Multi-Platform Gateway and SenseCAP Sensors](#) [pdf] Instr uction Manual

SX1302-US915 M2 Multi-Platform Gateway and SenseCAP Sensors, SX1302-US915 M2, Multi -Platform Gateway and SenseCAP Sensors, Gateway and SenseCAP Sensors, and SenseCAP Sensors, SenseCAP Sensors, Sensors