



# M2 Multi Platform Gateway and Sensecap Sensors User Guide

[Home](#) » [SENSECAP](#) » M2 Multi Platform Gateway and Sensecap Sensors User Guide 

## Contents

- 1 M2 Multi Platform Gateway and Sensecap Sensors User Guide
- 2 Gateway Network Configuration
  - 2.1 Connect to Ethernet Cable
  - 2.2 POE connection
  - 2.3 Checking the Gateway Connection Status
- 3 Bind the gateway via SenseCAP Mate App
  - 3.1 Download the SenseCAP Mate APP
  - 3.2 Log in to the APP
  - 3.3 Bind the gateway to the APP
- 4 Set up the SenseCAP Sensors via SenseCAP MateAPP
  - 4.1 Power on the sensor
  - 4.2 Select your device type
  - 4.3 Select the frequency plan
- 5 SenseCAP Portal and Mate APP
  - 5.1 Gateway status
  - 5.2 Sensor data
- 6 Read More About This Manual & Download PDF:
- 7 Documents / Resources
  - 7.1 References

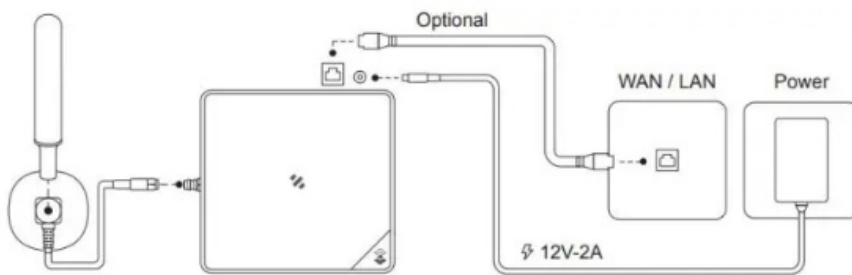
## M2 Multi Platform Gateway and Sensecap Sensors User Guide



### Gateway Network Configuration

Connect the antenna and power adaptor to the gateway.

The power LED will show in red, and in about 15s indicator on the top will flash green, indicating that the gateway is booting.



There are two ways to connect to the Internet. Choose the one that works for you.

#### Connect to Ethernet Cable

Connect the Ethernet cable to the device, and the indicator on the top will show solid green if the gateway is successfully connected to the internet.

Connect to WIFI

- **Step 1:** Turn on the device AP hotspot

Press the button for 5s until the blue indicator flashes slowly to enter the configuration mode.

- **Step 2:** Connect to the AP hotspot

AP hotspot name is SenseCAP\_XXXXXX (6-figure MAC address), default password is 12345678; connect your computer to this AP hotspot.



- **Step 3:** Get your device Username and Password

You can find the Username and Password on your device label.



- **Step 4:** Log in to the Local Console

Input the IP Address (192.168.168.1) in your browser to enter the Local Console. Then input your device username and password, and click the Login button.

192.168.168.1/cgi-bin/luci/ SenseCAP

**Authorization Required**  
Please enter your username and password.

Username:

Password:

Powered by LuCI / OpenWrt 21.02.0 r1-20220615 r16279-Sc0535800

- **Step 5: Connect to a WIFI**

Click on Network – Wireless

SenseCAP Status System **Network** Logout

**Status**

**System**

Interface Wireless **Diagnosics**

Hostname: SenseCAP

Model: M2-4L868

SN: 1

Build Version: r1-20220615

OS Version: 6.9.2-3

Firmware Version: --

Local Time: 2021-08-31 23:11:21

Uptime: 0h 51m 27s

Load Average: 0.56, 0.09, 0.51

**Memory**

Total Available: 80.61 MB / 120.53 MB (62%)

Used: 45.36 MB / 120.53 MB (37%)

Buffered: 5.48 MB / 120.53 MB (4%)

Cached: 16.96 MB / 120.53 MB (14%)

**Network**

Active Connections: 279 / 4096 (2%)

Click on the Scan button to scan the WIFI.

SenseCAP Status System **Network** Logout

**Status**

**System**

Interface Wireless **Diagnosics**

Hostname: SenseCAP

Model: M2-4L868

SN: 1

Build Version: r1-20220615

OS Version: 6.9.2-3

Firmware Version: --

Local Time: 2021-08-31 23:11:21

Uptime: 0h 51m 27s

Load Average: 0.56, 0.09, 0.51

**Memory**

Total Available: 80.61 MB / 120.53 MB (62%)

Used: 45.36 MB / 120.53 MB (37%)

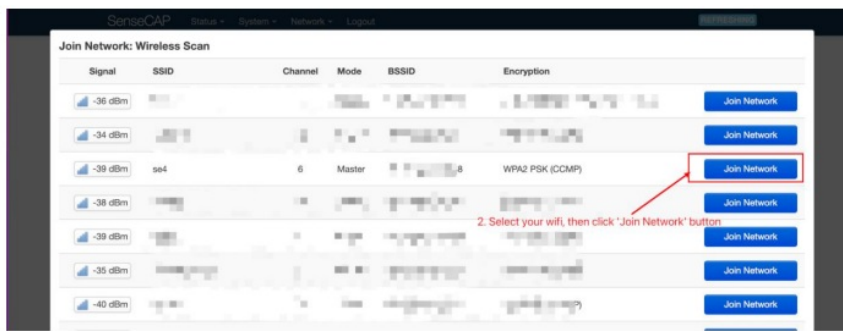
Buffered: 5.48 MB / 120.53 MB (4%)

Cached: 16.96 MB / 120.53 MB (14%)

**Network**

Active Connections: 279 / 4096 (2%)

Select your WI-FI to join the network.



The indicator on the top will show solid green if the gateway is successfully connected to the WIFI.

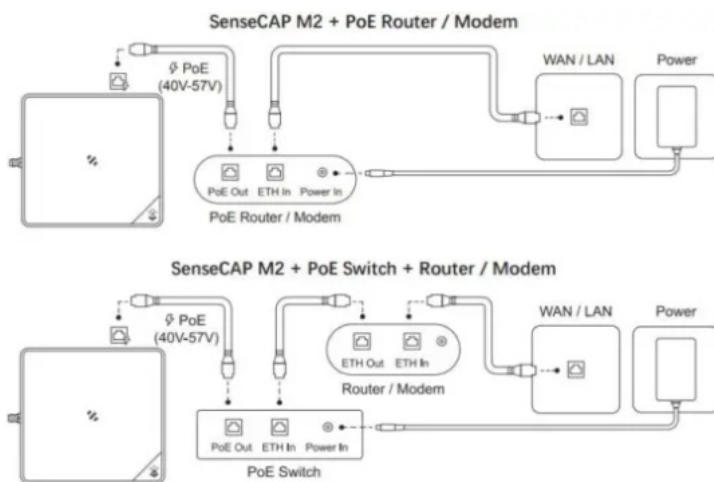
## POE connection

SenseCAP M2 supports PoE (Power on Ethernet) and is compatible with IEEE 802.3af standard.



### Note:

*You will need to have an extra PoE switch that provides 40V-57V DC power as aPSE(Power Sourcing Equipment) if your modem/router does not support PoE.*



## Checking the Gateway Connection Status

After powering on the gateway, you can check the gateway working status through the following methods:

### 1. LED Indicator

Mode		Description
Green	Solid	Gateway is healthy and the internet is well connected.
	Slow blinking	Gateway is booting, please wait.
Blue	Solid	The gateway is ready for internet connection. Further configuration is needed.
	Slow blinking	Configuration mode, and will auto exit after 5 mins if no activity.
	Fast blinking	Press the button for 30s until the indicator show fast flash will trigger the factory reset.
Orange	Slow blinking	Firmware is updating, and please do not power off the gateway or disconnect the internet.
White	Solid	Gateway is only with a factory firmware, and will be updated to the latest firmware automatically when it is connected to the internet.
Red	Solid	Hardware issue or internet connection failure.
	Slow blinking	Gateway not connected to the LNS.

## 2. SenseCAP Mate APP

In the SenseCAP Mate App, “Online status” indicates “Online” when the gateway is connected to the network and can receive and transfer sensor data.

Please refer to the next chapter 2 for obtaining the SenseCAP App.

### Bind the gateway via SenseCAP Mate App

#### Download the SenseCAP Mate APP

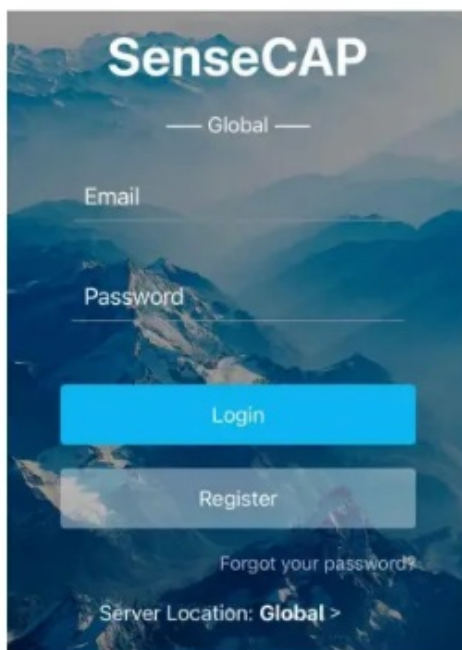
- [SenseCAP Mate APP for iOS](#) on App Store
- [SenseCAP Mate APP for Android](#) on the Google Play Store
- You can also download App from [App Center](#)



Download SenseCAP Mate App

### Log in to the APP

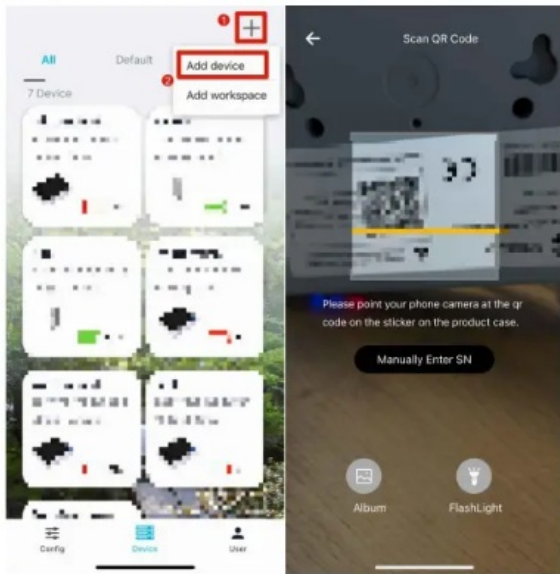
if it is your first time to use the SenseCAP platform, please register an account first.



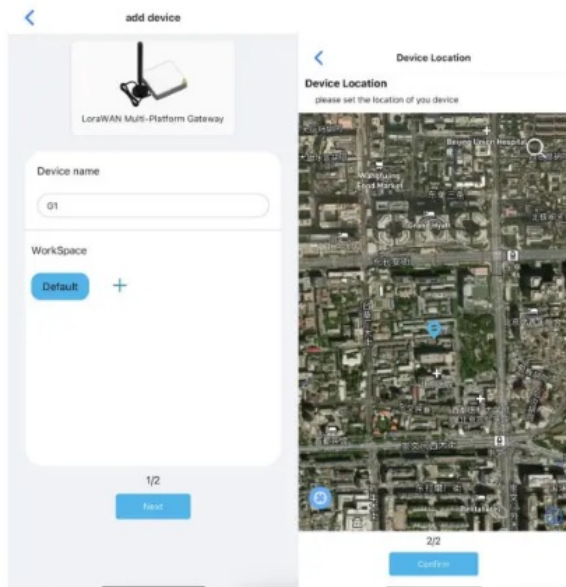
### Bind the gateway to the APP

Click the + in the upper right corner and select **Add device**

Then scan the QR code on your gateway label.



Set up your device name and location.



After successful binding, you will see your device in the **Device** directory.



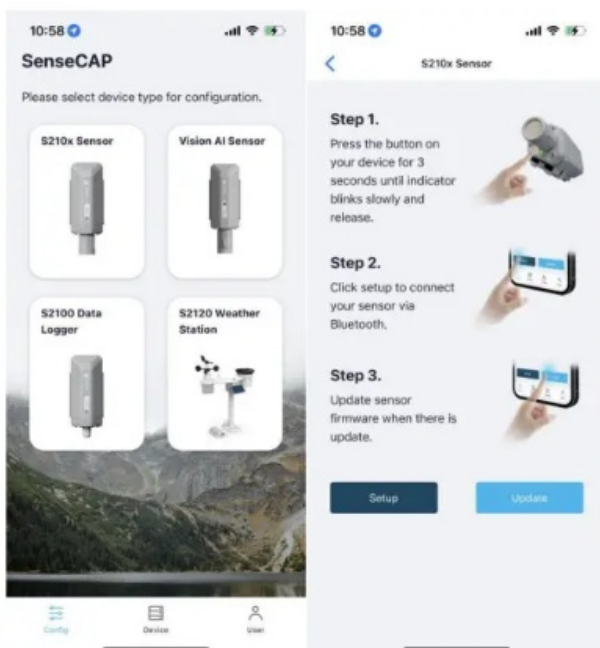


## Set up the SenseCAP Sensors via SenseCAP MateAPP

### Power on the sensor

Power on the sensor and press the button to enter the configuration mode

### Select your device type



## Select the frequency plan

Click on “Settings”, set the sensor frequency according to your gateway frequency. if your gateway is US915, please set your sensor to US915 frequency.



For more detailed about SenseCAP sensors, please refer to: [SenseCAP Sensors](#)

## SenseCAP Portal and Mate APP

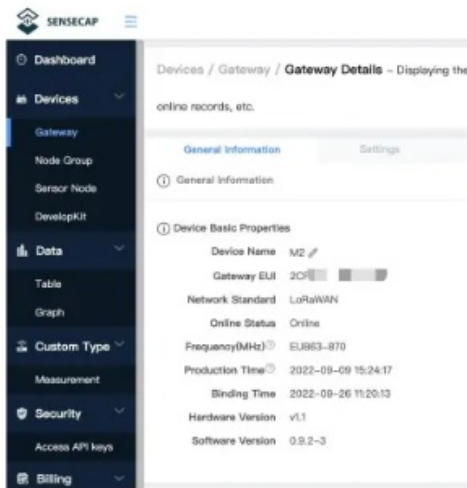
SenseCAP Mate APP and SenseCAP Portal can be used to check your device status and device management.

- [SenseCAP Mate APP for iOS](#) on App Store
- [SenseCAP Mate APP for Android](#) on the Google Play Store
- [SenseCAP Portal](#)

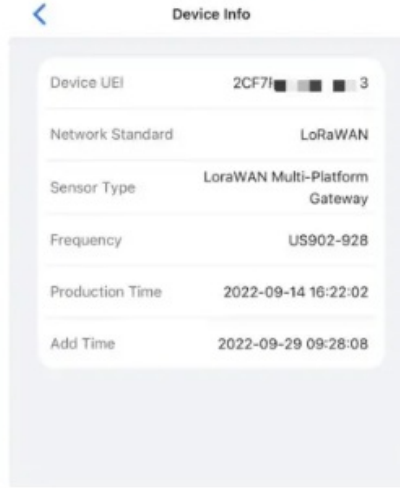
## Gateway status

Check the gateway info on the SenseCAP Portal and SenseCAP Mate APP

## SenseCAP Portal



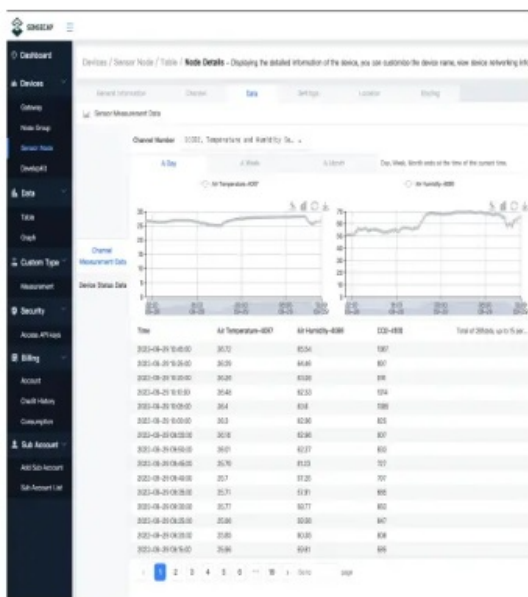
## SenseCAP Mate APP



## Sensor data

Check the sensor data on the SenseCAP Portal and SenseCAP Mate APP

## SenseCAP Portal



## SenseCAP Mate APP






**Read More About This Manual & Download PDF:**

**Documents / Resources**

	<p><a href="#">SENSECAP M2 Multi Platform Gateway and Sensecap Sensors</a> [pdf] User Guide M2 Multi Platform Gateway and Sensecap Sensors, M2, Multi Platform Gateway and Sensecap Sensors, Platform Gateway and Sensecap Sensors, Gateway and Sensecap Sensors, Sensecap Sensors, Sensors</p>
	<p><a href="#">SenseCAP M2 Multi-Platform Gateway</a> [pdf] Instructions M2, M2 Multi-Platform Gateway, Multi-Platform Gateway, Platform Gateway, Gateway</p>

References

-  [App Center](#)
-  [SENSECAP](#)
-  [Search results for: 'SenseCAP Sensor'](#)