



SENGBIRCH F07 Keyboard Case for iPad Pro Installation Guide

[Home](#) » [SENGBIRCH](#) » SENG BIRCH F07 Keyboard Case for iPad Pro Installation Guide 

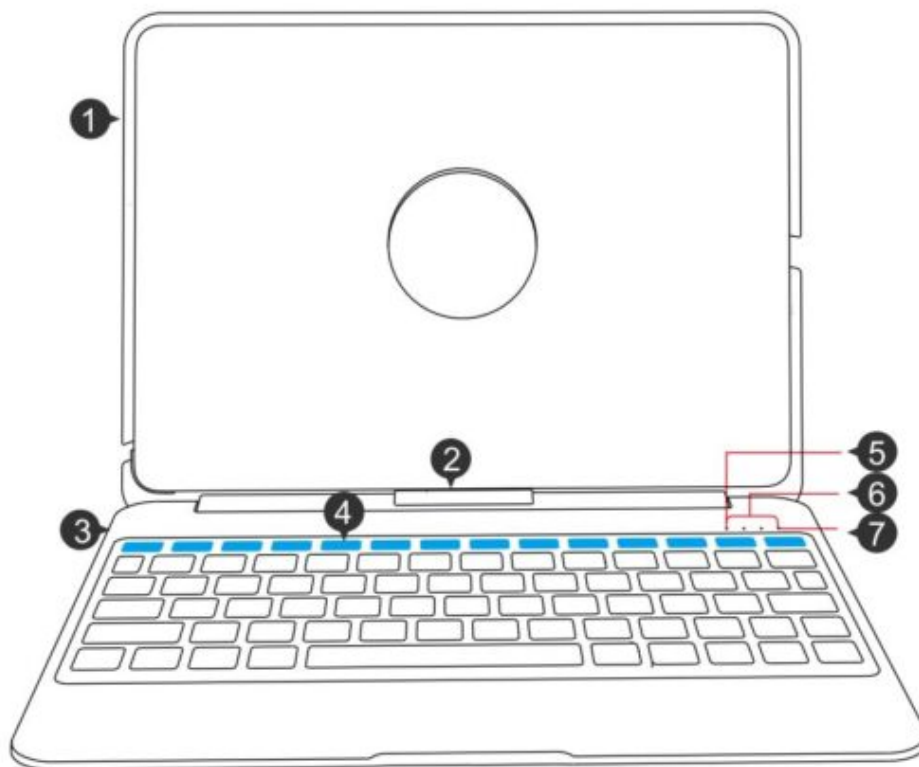
Contents

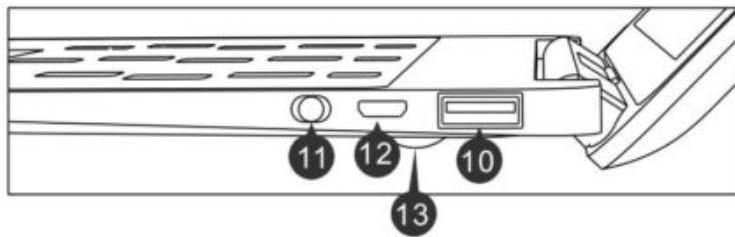
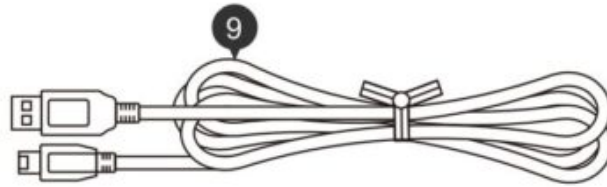
- [1 SENG BIRCH F07 Keyboard Case for iPad Pro Installation Guide](#)
- [2 Know your product](#)
- [3 Install/uninstall iPad](#)
- [4 Open power](#)
- [5 Open the Bluetooth signal and connection](#)
- [6 Keyboard function introduction](#)
- [7 Product parameter](#)
- [8 Maintenance](#)
- [9 Charge for keyboard/discharge for keyboard](#)
- [10 Documents / Resources](#)
- [11 Related Posts](#)

SENG BIRCH F07 Keyboard Case for iPad Pro Installation Guide



Know your product

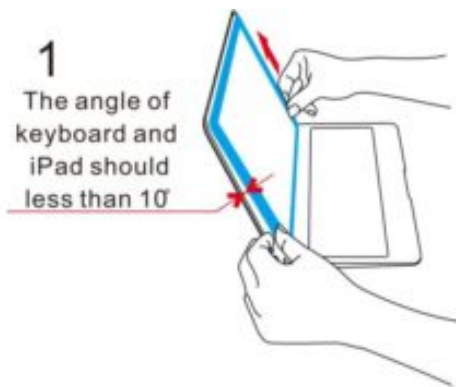




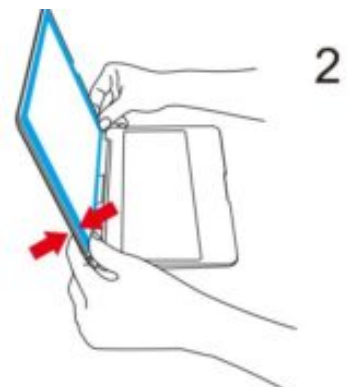
1. iPad protective cover
2. Install/Uninstall button
3. Keyboard body
4. Function keys (blue area)
5. Capital indicator
6. Battery indicator (4 lights)
7. Bluetooth indicator
8. Instructions
9. Micro-USB charging cable
10. Usb discharging port
11. Micro-USB charging port
12. Power switch
13. pad

Install/uninstall iPad

Install iPad

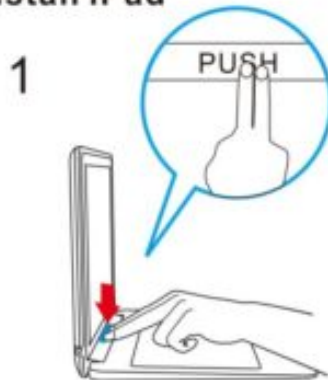


Load the iPad into the the protective shell,suggest loading angel is 10° .

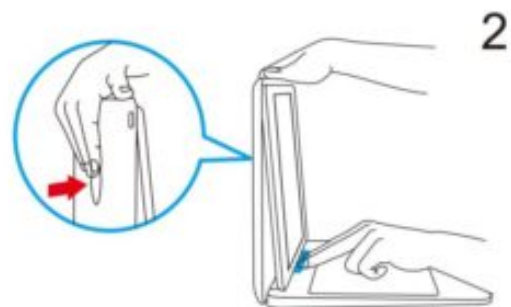


Gently press the sides of the iPad by thumb,make sure the iPad is well seated into the shell slot.

Uninstall iPad

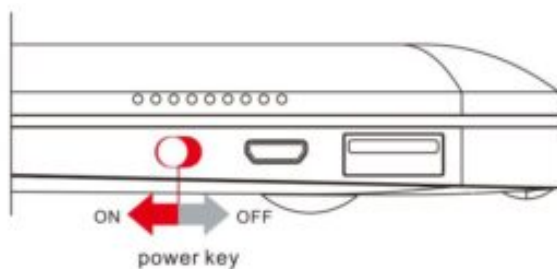


Constantly press the "push" button



Gently push the round hole from the back of the protective shell, take out the ipad safely.

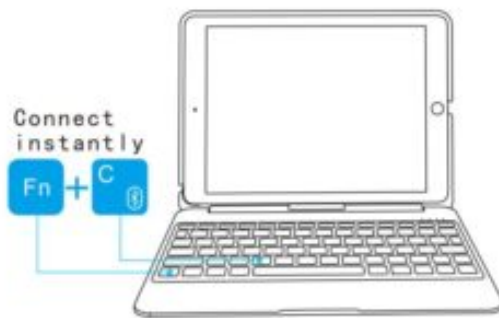
Open power



1. Open the keyboard cover, move the switch to "on" position, then capital indicator and Bluetooth indicator display white and blue color respectively, after 3 seconds will automatically go out.
2. Close the keyboard cover, and move the switch to "off" position, then enter into sleep mode.

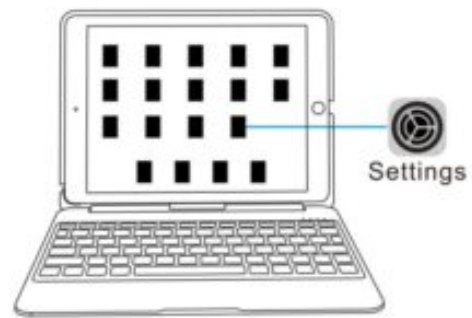
Open the Bluetooth signal and connection

1



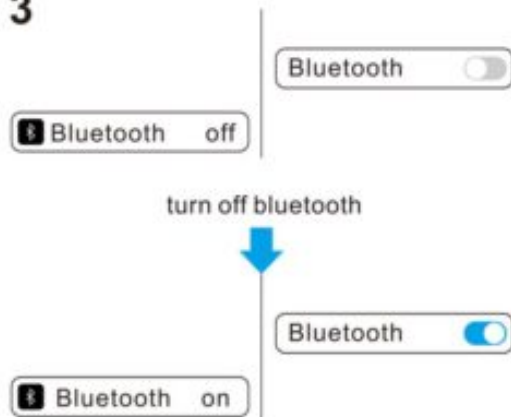
Press **Fn + C**, the signal light is flashing, the keyboard will stay on searching state within 3 minutes

2



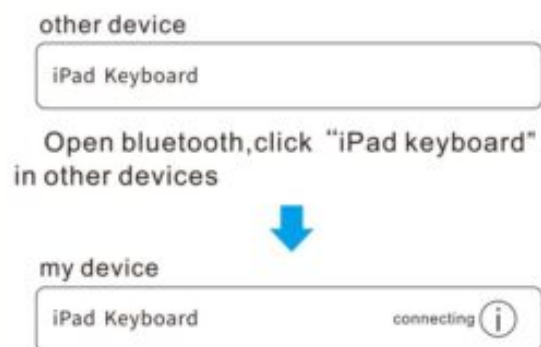
Open your iPad, click "settings-universal-bluetooth"

3



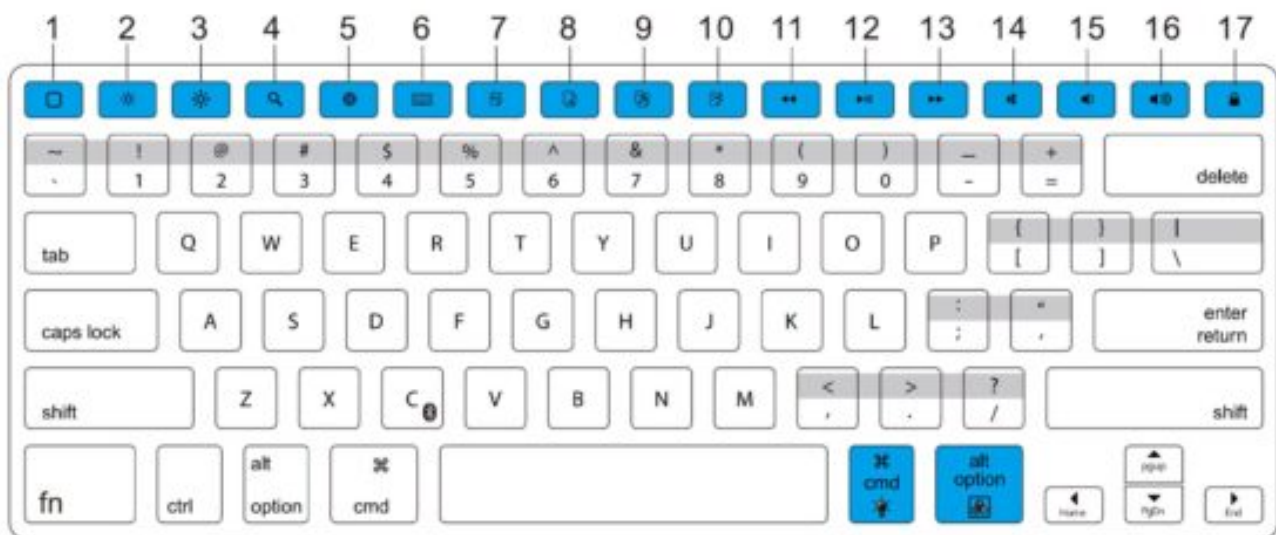
Open your bluetooth signal, keep the bluetooth showing on search state

4



Then you will find connection is successful in "my devices"

Keyboard function introduction



- | | |
|--|---|
| 1. Home (Displays the iPad home screen) | 10. Cut |
| 2. Darker | 11. Back |
| 3. Brighter | 12. Play/pause |
| 4. Search (Launches the iPad search function) | 13. Forward |
| 5. Switch input language | 14. Mute |
| 6. Virtual keyboard | 15. Volume down Switch |
| 7. All selection | 16. Volume up |
| 8. Copy | 17. Lock screen (Locks or unlocks the iPad screen) |
| 9. Paste | |

Special key instructions

- Switch the language input methods by pressing **Fn** + .
- Fn** + Turn on/off or adjust the backlit operating methods: turn on backlit by pressing one time, increase the brightness by pressing two time, reach the brightest by pressing three time, one more time to turn off the backlit color.
- Fn** + Switch the 7 backlit color (red, yellow, blue, green, cyan, purple, white)
- If you want to type the words in grey area, Like "@", you need to press **shift** + key.
- + other keys can realise some uncommon special characters.
- Some special short characters

Cut +

Paste +

Select all +

Copy +

Product parameter

Bluetooth 3.0 interface standard

1. Operating distance : KIO meter
2. Modulation System: GFSK
3. Working voltage: 3.0-4.2v
4. Working Current: 1.3-3.5mA
5. Sleep Current: «400pA
6. Charging Current:770mA
7. Standby Time: 366days
Uninterrupted Working Time: 1870H(without backlight)
8. 46H(with backlight)
9. Charging Time: «6 hours
10. Lithium battery capacity : 4400mAh
11. Lithium battery Life: 3 years
12. Key life: million strokes
13. Operating temperature: -10 i550C

Maintenance

Preserve the keyboard under normal temperature, recharge under normal voltage. If do not use for long time, need to timely charge (about one time in two months).

Charge for keyboard/discharge for keyboard

Charge for keyboard



Using cable to connect both ports,then enter into charging state,you can see power state through power indicator.

Power indicator(charge/discharge)

●	●	●	●	100%power
●	●	●	●	75%power
●	●	●	●	50%power
●	●	●	●	25%power
●	●	●	●	Less than 25% power

- Full power
- Charging/discharging
- No power

Discharge for keyboard

Discharge for keyboard



Using cable to connect both ports, then enter into discharging state, you can see power state by power indicator.

Keyboard battery disposal

- Insert screwdriver between plastic top and metal case at keyboard top or bottom
- Pry up plastic top and remove it completely. This action destroys keyboard
- Turn top over and remove tape from battery.
- Separate battery from circuit board
- Dispose of battery according to local laws. Recycle remaining keyboard parts.

Table of Toxic and Hazardous Substance / Elements and Their Content

Ingredients	(Pb)	(Hg)	(Cd)	(Cr(VI))	(PBB)	(PBDE)
Cable	X	O	O	O	O	O
PWAs	X	O	O	O	O	O
Plastic parts	O	O	O	O	O	O
Membrane	O	O	O	O	O	O
Meter parts	X	O	O	O	O	O
Rubber dome	O	O	O	O	O	O

O stands for this toxic and hazardous content in homogeneous material is under the SJ/TII 363-2006 Standards limits

X stands for this toxic and hazardous content in homogeneous material is beyond the SJ/TI 1363-2006 Standards limits Under the ingredients with 'X' in the form all are up to ROHS; "on 27 January 2003 the European parliament and the council announce electronic equipment in limiting the use of certain hazardous substances directive 2002/95/EC"

Note: the environmental protection using period reference standard depends on the product of the regular work temperature and humidity conditions.

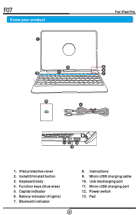
we won't note you if changing the content of the instructions and specifications.



Caution: To use this product property, please read the instructions made in china

Read More About This Manual & Download PDF:

Documents / Resources

	<p>SENG BIRCH F07 Keyboard Case for iPad Pro [pdf] Installation Guide B0BKLSL571, B07PGDCMPM, B0BDDXJZDR, F07 Keyboard Case for iPad Pro, F07, Keyboard Case for iPad Pro, F07 Keyboard Case, Keyboard Case, Case</p>
---	--