

Contents [[hide](#)]

- [1 SENECA Z-PC Series Data Loggers](#)
- [2 Specifications](#)
- [3 FAQs](#)
- [4 Documents / Resources](#)
 - [4.1 References](#)
- [5 Related Posts](#)



SENECA Z-PC Series Data Loggers



Product Information

Specifications

- **Product Name:** SENECA Z-PC Series Data Loggers
- **Model:** Z-LTE
- **Manufacturer:** SENECA

Product Usage Instructions

The buffer battery replacement kit includes a battery pack and a front adhesive label. This guide illustrates the replacement procedure using the Z-LTE model as a reference, but the instructions are valid for all SENECA Z-PC series data loggers.

Battery Replacement Procedure:

1. Remove the front antenna.

STEP 1



2. Using a screwdriver, remove the product terminals and DIN rail mounting hooks.

STEP 2



3. Remove the front label.

STEP 3



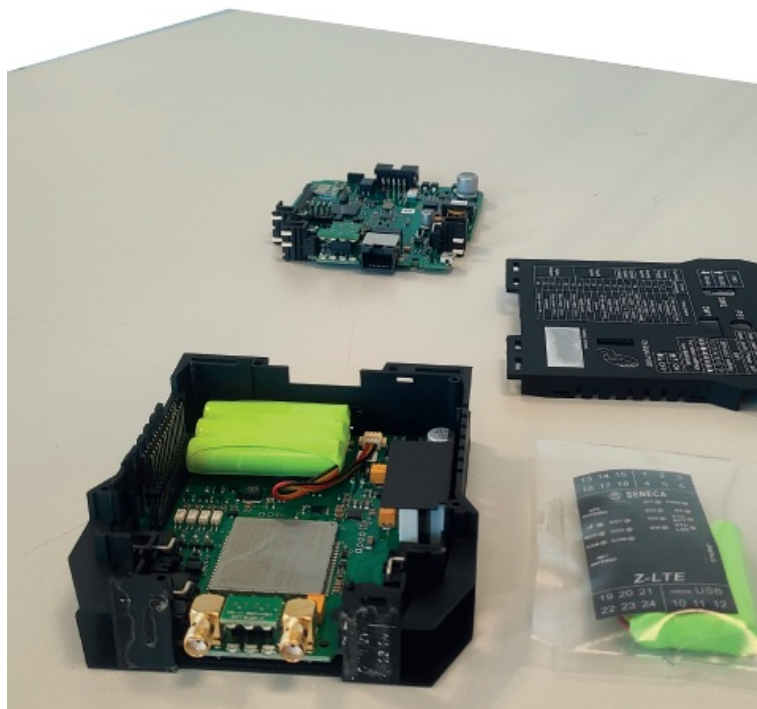
4. Use the tabs to remove the product cover.

STEP 4



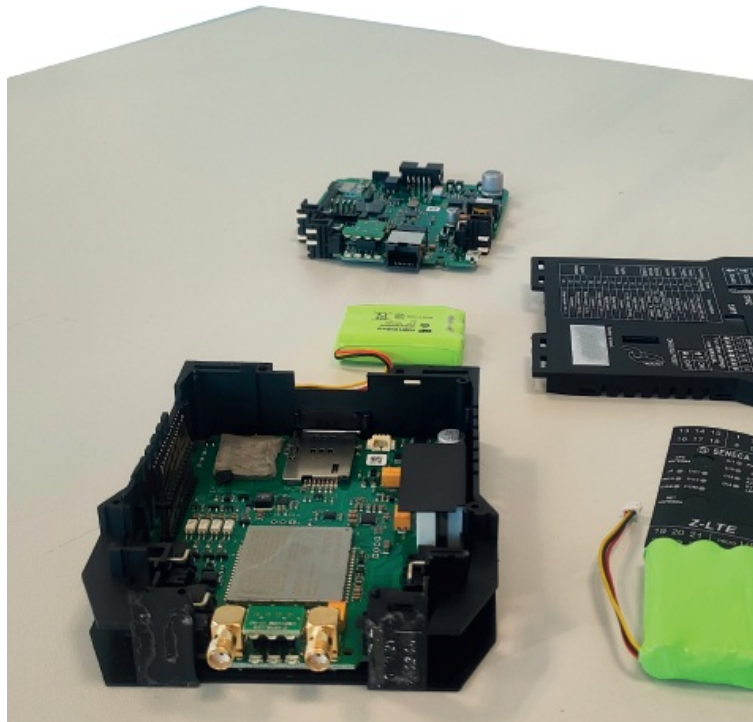
5. Disconnect the upper board to access the depleted and/or damaged battery pack.

STEP 5



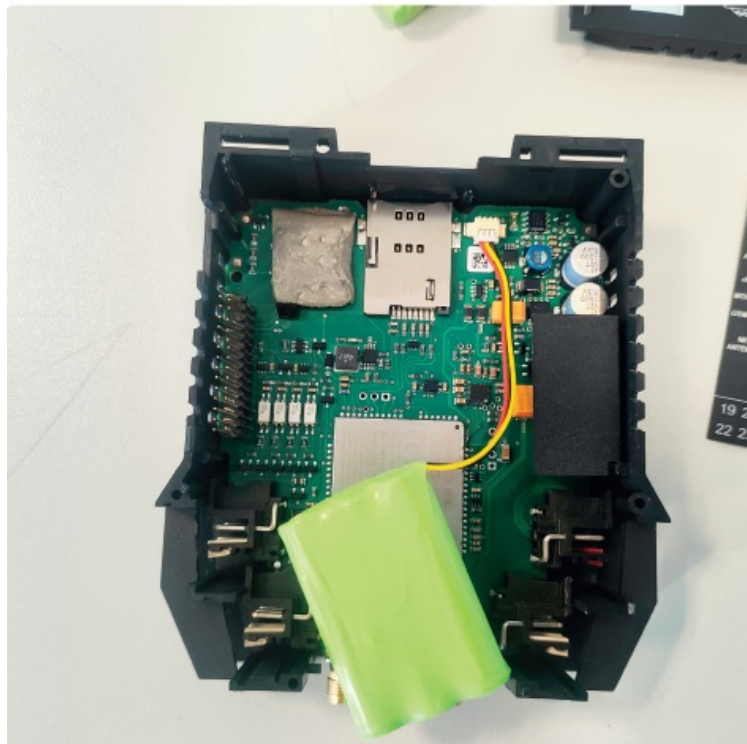
6. Disconnect the spent battery from the contact pin and connect the new battery to the contact pin.

STEP 6



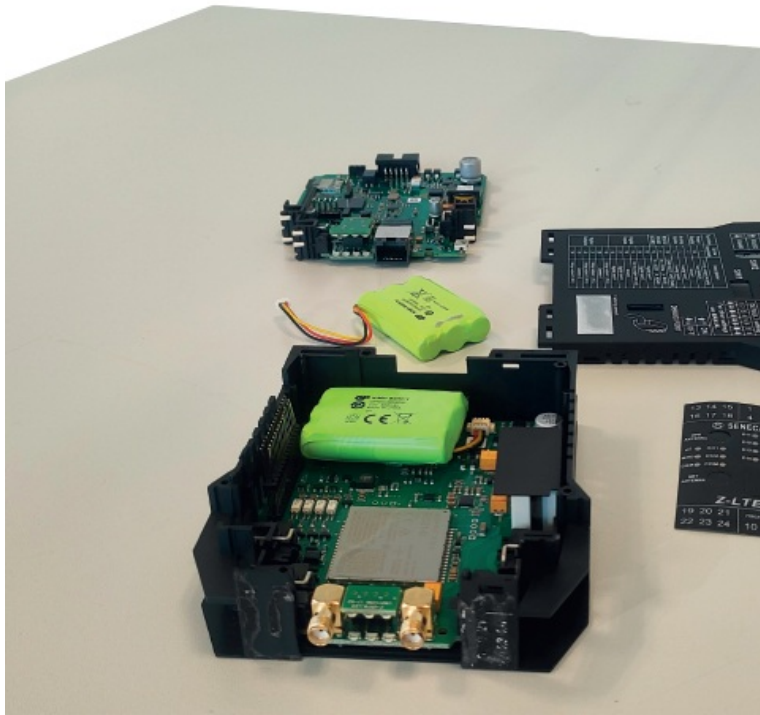
7. Connect the new battery to the contact pin. Reposition the new battery to its original location and close the product.

STEP 7



8. Reposition the new battery to its original location and proceed to close the product.

STEP 8



⚠ Attention: Depending on the product model and hardware revision, the replacement kit may vary. Consult the SENECA website or your sales contact for the correct replacement part.

FAQs

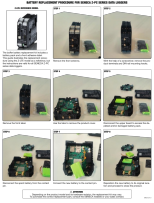
Q: Can I use this battery replacement procedure for other models in the Z-PC series?

Yes, the instructions provided are valid for all SENECA Z-PC series data loggers.

Q: Where can I purchase the correct replacement part?

You can consult the SENECA website or reach out to your sales contact for assistance in purchasing the correct replacement part.

Documents / Resources



[SENECA Z-PC Series Data Loggers \[pdf\]](#) Instruction Manual
Z-PC Series, Z-PC Series Data Loggers, Data Loggers, Loggers

References

- [User Manual](#)

Related Posts



[DataTaker DT-80 Series Data Loggers User Manual](#)

DataTaker DT-80 Series Data Loggers User Manual



[HOBO MX2300 Series Data Loggers User Guide](#)

HOBO MX2300 Series Data Loggers . Quick Start for the
HOBO® MX2300 Series Data Loggers Download
HOBOconnect® to...



[Intermec PC Series and PD Series Cutter Tray
Instructions](#)

Intermec PC Series and PD Series Cutter Cutter Tray
Instructions Use this tray only with the cutter accessory...



[InTemp CX600 Series Data Loggers User Guide](#)

InTemp CX600 Series Data Loggers Administrators: Set
up an InTempConnect® account Note: If you are using
the logger...

Leave a comment

Your email address will not be published. Required fields are marked *

Comment *

Name

Email

Website

☐ Save my name, email, and website in this browser for the next time I comment.

Post Comment

Search:

e.g. whirlpool wrf535swhz

Search

[Manuals+](#) | [Upload](#) | [Deep Search](#) | [Privacy Policy](#) | [@manuals.plus](#) | [YouTube](#)

This website is an independent publication and is neither affiliated with nor endorsed by any of the trademark owners. The "Bluetooth®" word mark and logos are registered trademarks owned by Bluetooth SIG, Inc. The "Wi-Fi®" word mark and logos are registered trademarks owned by the Wi-Fi Alliance. Any use of these marks on this website does not imply any affiliation with or endorsement.