



sencore 4K UHD Receiver/ Decoder Impulse 400D User Guide

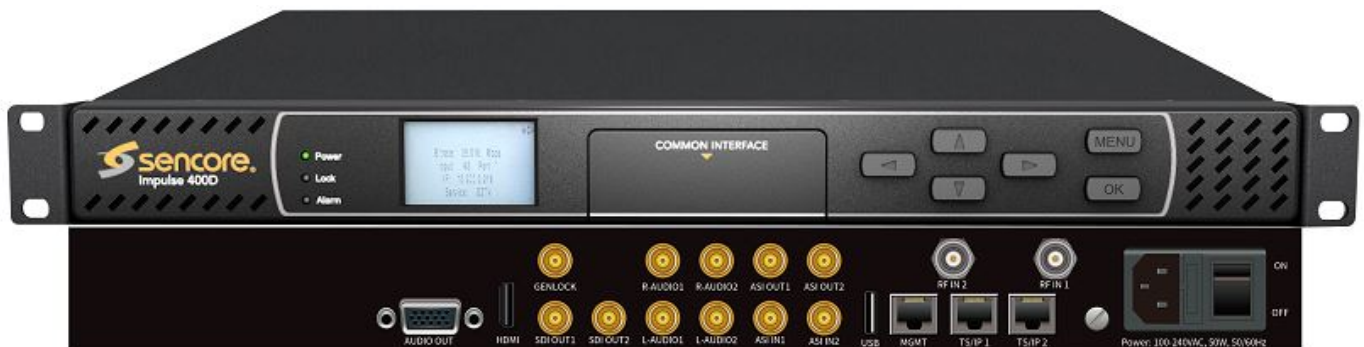
[Home](#) » [SENCORE](#) » sencore 4K UHD Receiver/ Decoder Impulse 400D User Guide 

Contents

- [1 sencore 4K UHD Receiver/ Decoder Impulse 400D](#)
- [2 Product Information](#)
- [3 Product Usage Instructions](#)
- [4 Review package contents](#)
- [5 Installation](#)
- [6 Management](#)
- [7 Documents / Resources](#)
 - [7.1 References](#)



sencore 4K UHD Receiver/ Decoder Impulse 400D



Product Information

The product is the Impulse 400D, a 4K UHD Receiver/Decoder. It comes with a Quick Start Guide and is designed to be installed in a rack space. The unit has various I/O connections on the back and can be controlled through a built-in web interface or API. It also has a management network port for Ethernet connectivity.

Product Usage Instructions

1. Review the package contents to ensure everything is included.

If anything is missing or damaged, contact your supplier.

2. Installation:

1. Secure the Impulse 400D into the designated rack space.
2. Make all appropriate I/O connections on the back of the unit.
3. Connect an Ethernet Cable from a management network to the MGMT port.
4. Connect the line cord and move the power switch from 0 to I to power the unit.

3. Management: The Impulse 400D can be configured and controlled through either the built-in web interface or API. To change the network settings, follow these steps:

- Subnet: 255.255.255.0
- Gateway: 0.0.0.0
- Username: admin
- Password: mpeg101
- If set to Static, use the arrow keys to set the address, pressing OK after each line is configured.
- Open a web browser and type: <http://FORM8230>

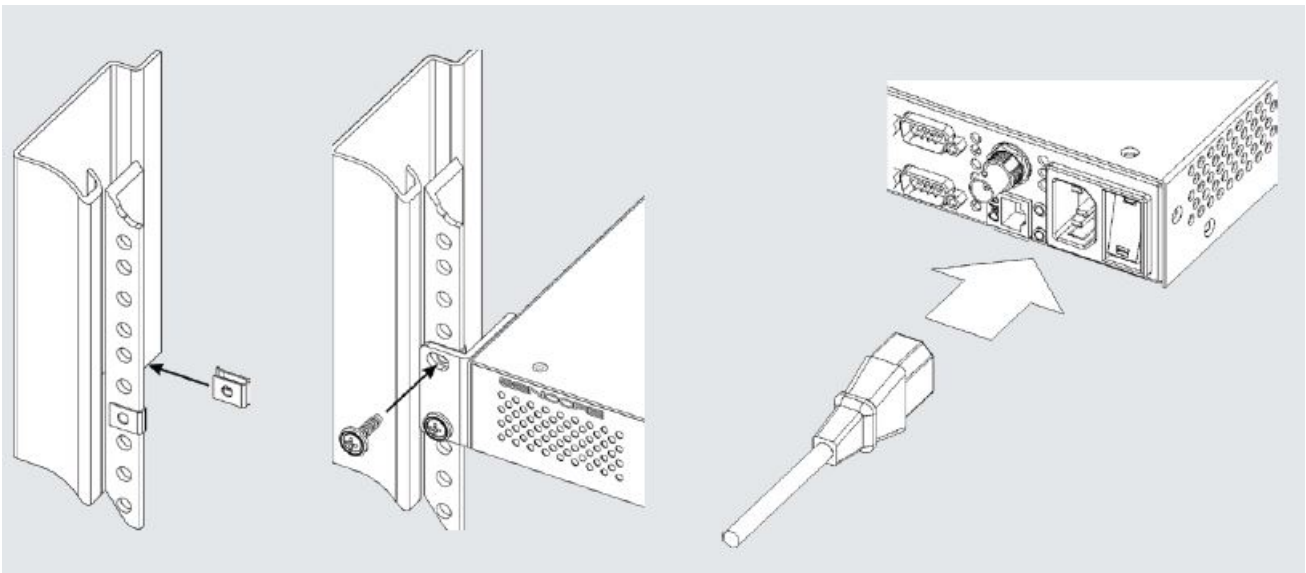
Contact Sencore for further assistance or information: +1.605.978.4600 www.sencore.com

Review package contents



- Impulse 400D
- Line cord (based on country)
- If anything is missing or damaged please contact your supplier

Installation



1. Secure the Impulse 400D into the rack space.
2. Make all appropriate I/O connections on the back of the unit.
3. Connect an Ethernet Cable from a management network to the MGMT port.
4. Connect the line cord and move the power switch from 0 to I to power the unit.

Management



The Impulse 400D is configured and controlled through either the built-in web interface or the API. To change the network settings, use the steps below

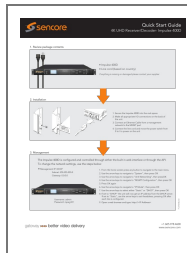
- Management IP: DHCP
- Subnet: 255.255.255.0
- Gateway: 0.0.0.0
- Username: admin
- Password: mpeg101

1. From the home screen press any button to navigate to the main menu
2. Use the arrow keys to navigate to "System", then press OK
3. Use the arrow keys to navigate to "Unit Networking", then press
4. Use the arrow keys to navigate to "MGMT Configuration", then press OK
5. Press OK again
6. Use the arrow keys to navigate to "IP Mode", then press OK
7. Use the arrow keys to select either "Static" or "DHCP", then press OK
8. If set to "DHCP" the unit will now get an IP address from the DHCP server. If set to "Static", use the arrow keys to set the address, pressing OK after each line is configured.

9. Open a web browser and type: http://<IP Address>

+1.605.978.4600 www.sencore.com.

Documents / Resources



[sencore 4K UHD Receiver/ Decoder Impulse 400D](#) [pdf] User Guide
FORMXXXX, FORM8230, 4K UHD Receiver Decoder Impulse 400D, 4K UHD Receiver, UHD Receiver, Receiver Decoder Impulse 400D, Decoder Impulse 400D, Decoder 400D, Impulse 400D

References

- [Sencore - Video Broadcast Equipment Suppliers, Equipment Manufacturers](#)