

SENCOR SWS 8600SH Smart Multi Channel Thermo Hygro Station with Wireless Sensor



SENCOR SWS 8600SH Smart Multi Channel Thermo Hygro Station with Wireless Sensor User Manual

[Home](#) » [SENCOR](#) » SENCOR SWS 8600SH Smart Multi Channel Thermo Hygro Station with Wireless Sensor User Manual 

Contents

- [1 SENCOR SWS 8600SH Smart Multi Channel Thermo Hygro Station with Wireless Sensor](#)
- [2 Product Usage Instructions](#)
- [3 DOWNLOAD THE APP](#)
- [4 BASIC DESCRIPTION OF THE APPLICATION](#)
- [5 AUTOMATION WITH OTHER DEVICE USING TUYA SMART](#)
- [6 SCENE CREATION](#)
- [7 Warranty conditions](#)
- [8 Documents / Resources](#)
 - [8.1 References](#)
- [9 Related Posts](#)



SENCOR SWS 8600SH Smart Multi Channel Thermo Hygro Station with Wireless Sensor



Specifications

- Model: SWS 8600 SH
- Type: Smart multi-channel weather station with wireless sensor
- Wireless Connectivity: Wi-Fi (2.4 GHz)
- Compatible Apps: SENCOR HOME, TUYA SMART

Product Usage Instructions

Adding Device to SENCOR HOME App

1. Plug the SWS 8600 into a power outlet.
2. Press and hold the [SENSOR/WI-FI] button on the back of the SWS 8600 for 6 seconds until the AP and icon flash.
3. Turn on your mobile Bluetooth function.
4. Launch the SENCOR HOME app.
5. Select the SWS 8600 device to pair with the app.
6. Press the Add button.

7. Connect your mobile phone to the Wi-Fi network that will be transferred to the SWS 8600.
8. Enter your home Wi-Fi network password on the app.
9. Verify entered Wi-Fi data and press Next.
10. Customize the device name if needed.
11. The SWS 8600 is successfully added to the SENCOR HOME app.

Manually Adding Device to SENCOR HOME App:

1. Follow steps 1 and 2 as mentioned above for operating mode.
2. In the app, press the + button to expand the menu.
3. Select Add device and then Weather stations group.
4. Select the device SWS 8600 SH and follow the connection wizard.

Resetting the SWS 8600

If previously connected to SENCOR HOME app:

- Press and hold the RESET button on the back of the SWS 8600 while it is on.
- The successful reset will be confirmed by an audible tone.

Frequently Asked Questions (FAQ):

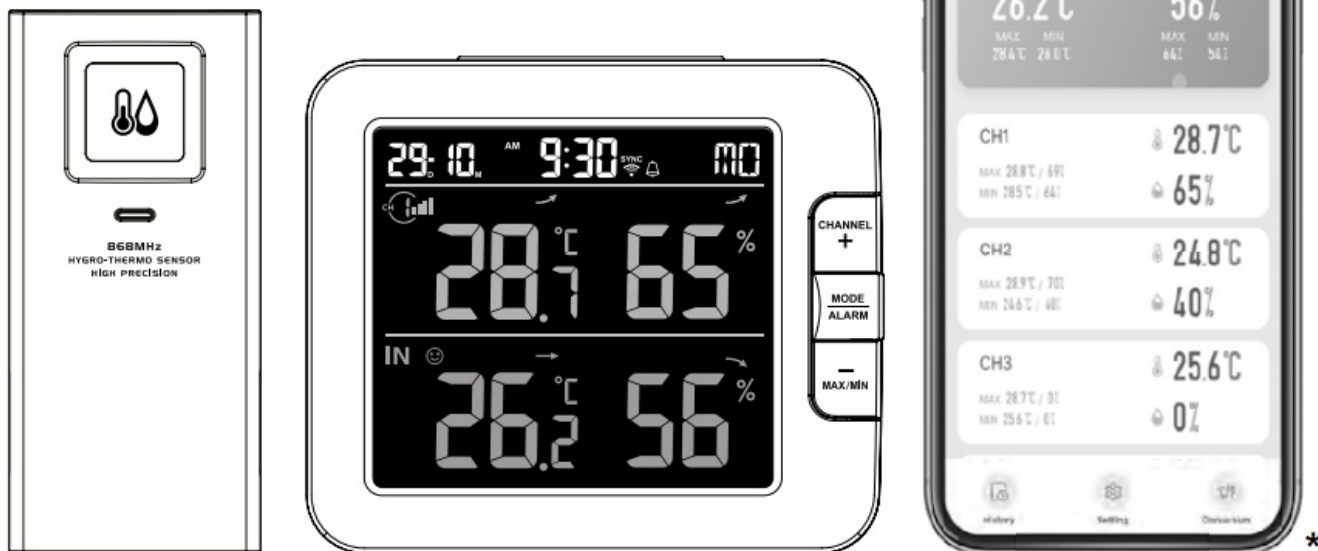
• **Q: Can I use a 5 GHz Wi-Fi network with the SWS 8600?**

A: No, always choose Wi-Fi networks operating at 2.4 GHz for compatibility with the SWS 8600.

• **Q: How do I know if the device is successfully added to the app?**

A: The app will display a confirmation message once the device is successfully added to the SENCOR HOME app.

SWS 8600 SH



*Smart phone not included

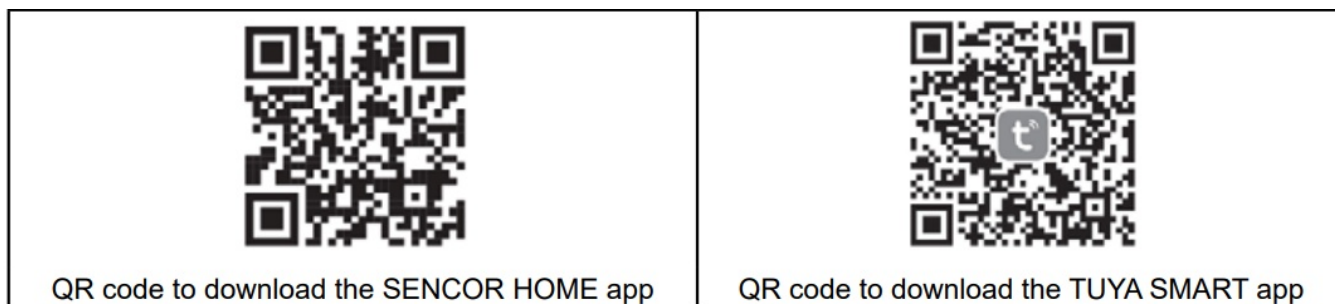
User Manual

Smart multi-channel weather station with wireless sensor

DOWNLOAD THE APP

The Tuya platform is a product of a third party / foreign company and SENCOR / FAST ČR, a.s. is not responsible for the functionality of the Tuya system, changes in the application, installation procedures, changes in conditions, etc.

The SENCOR HOME and TUYA SMART apps are available for download on the Play Store (Android) and AppStore (iOS).



ADD DEVICE TO THE SENCOR HOME APP

Adding the SWS 8600 SH to the SENCOR HOME app (hereafter SWS 8600)

A) The SWS 8600 will be found in the app automatically:

1. Put the SWS 8600 into operating mode
 1. Plug the SWS 8600 into a power outlet.

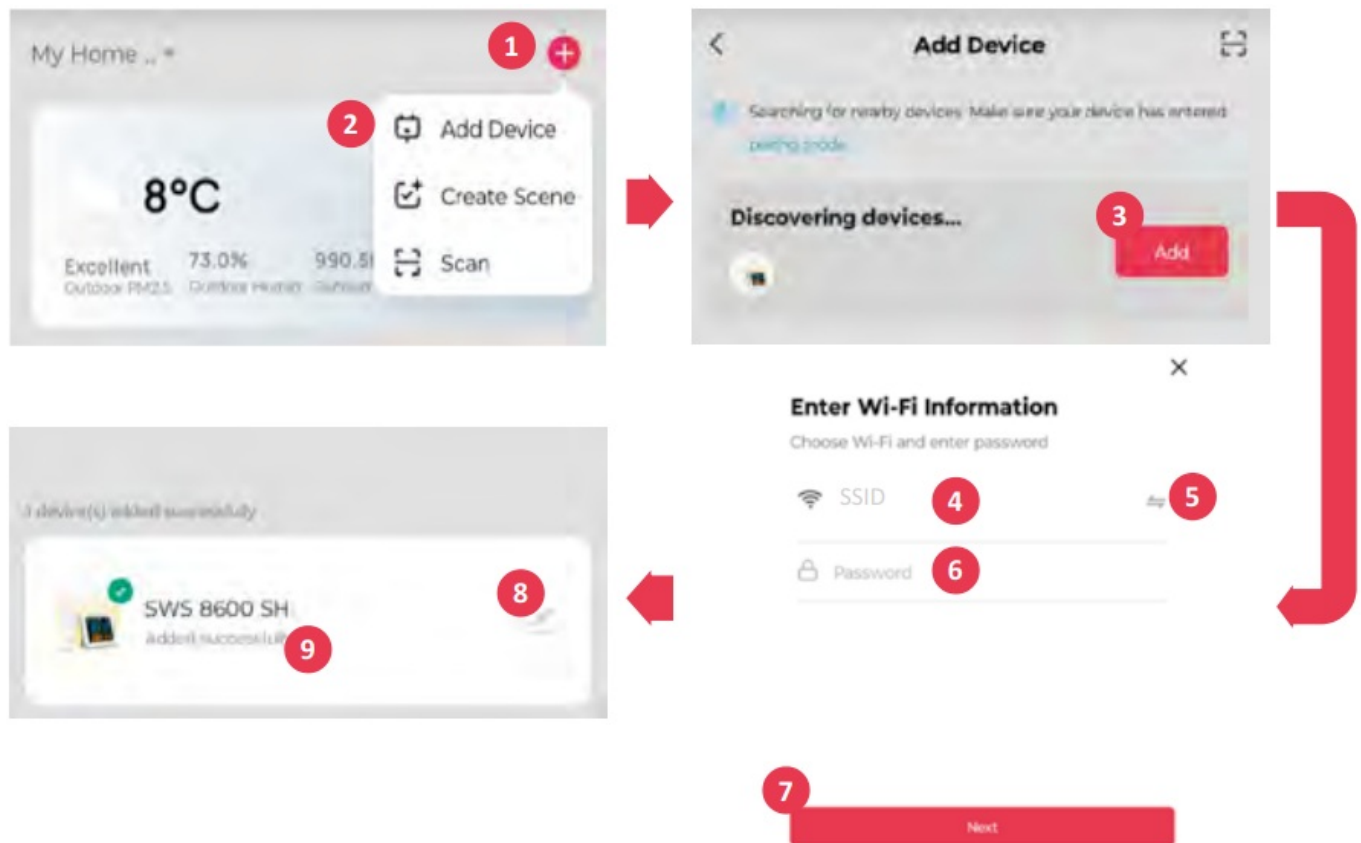
2. Press and hold the [SENSOR/WI-FI] button on the back of the SWS8600 for 6 seconds. The AP and icon





will start flashing on the display. When the device is plugged into a network outlet for the first time, AP mode starts automatically.

NOTE: turn on your mobile Bluetooth function before add device.


2. Launch the already installed SENCOR HOME app and follow the instructions below:

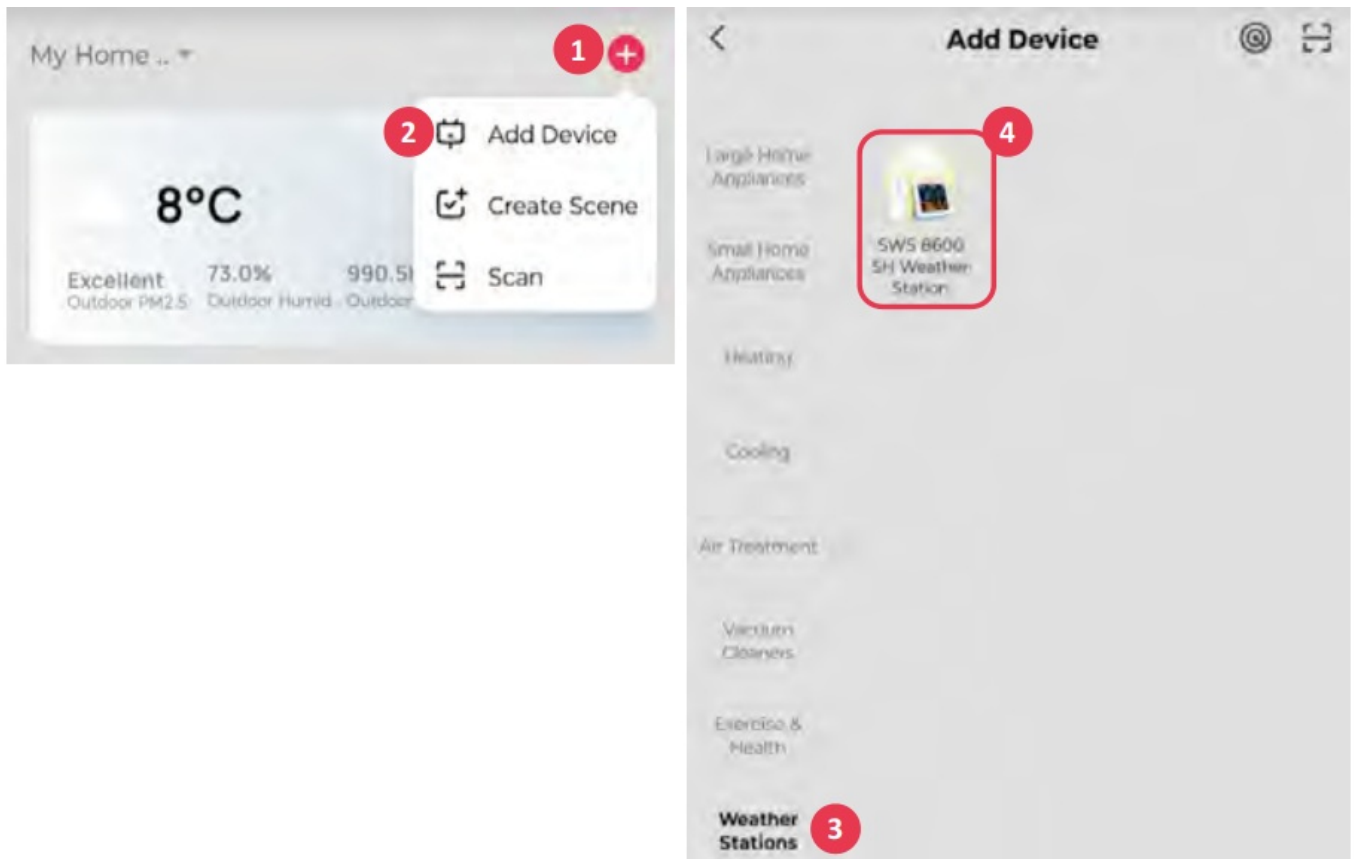


1	Press the “+” button to expand the menu.
2	Add a new device – the app will try to find all available compatible SENCOR devices nearby. Select the SWS 8600 device you want to pair with the application.
3	Press the “Add” button.
4	To add a WI-FI network to the SWS 8600, your mobile phone must be connected to the WI-FI network* during the setup process, which will be transferred to the SWS 8600.
5	Press the  icon to go to your smartphone’s system to select from the available WI-FI networks*. The WI-FI network you have selected will then be displayed in point “4”.
6	Enter the password of your home WI-FI network to which the SWS 8600 will be connected. Press the  button to display your WI-FI network password.
7	Check that the entered WI-FI data is correct and press the “Next” button.
8	Button to change the name of the SWS 8600 device.
9	The SWS 8600 has been successfully added to the “SENCOR HOME” app.

* always choose WI-FI networks that operate at 2.4 GHz.

Manually add the SWS 8600 to the SENCOR HOME app:

1. Put the SWS 8600 into operating mode
 1. Plug the SWS 8600 into a power outlet.
 2. Press and hold the [SENSOR/WI-FI] button on the back of the SWS8600 for 6 seconds. The AP and  icon will start flashing on the display. When the device is plugged into a network outlet for the first time, AP mode starts automatically.
2. Launch the already installed SENCOR HOME app and follow the instructions below:



1	Press the “+” button to expand the menu.
2	Add a new device “Add device”.
3	Select the “Weather stations” group.
4	Select the device “SWS 8600 SH” and follow the steps in the connection wizard.

RESETTING THE SWS 8600

If the device was previously connected to the SENCOR HOME app, it cannot be added again to another SENCOR HOME user account. Reset pairing with the SENCOR HOME app is required.

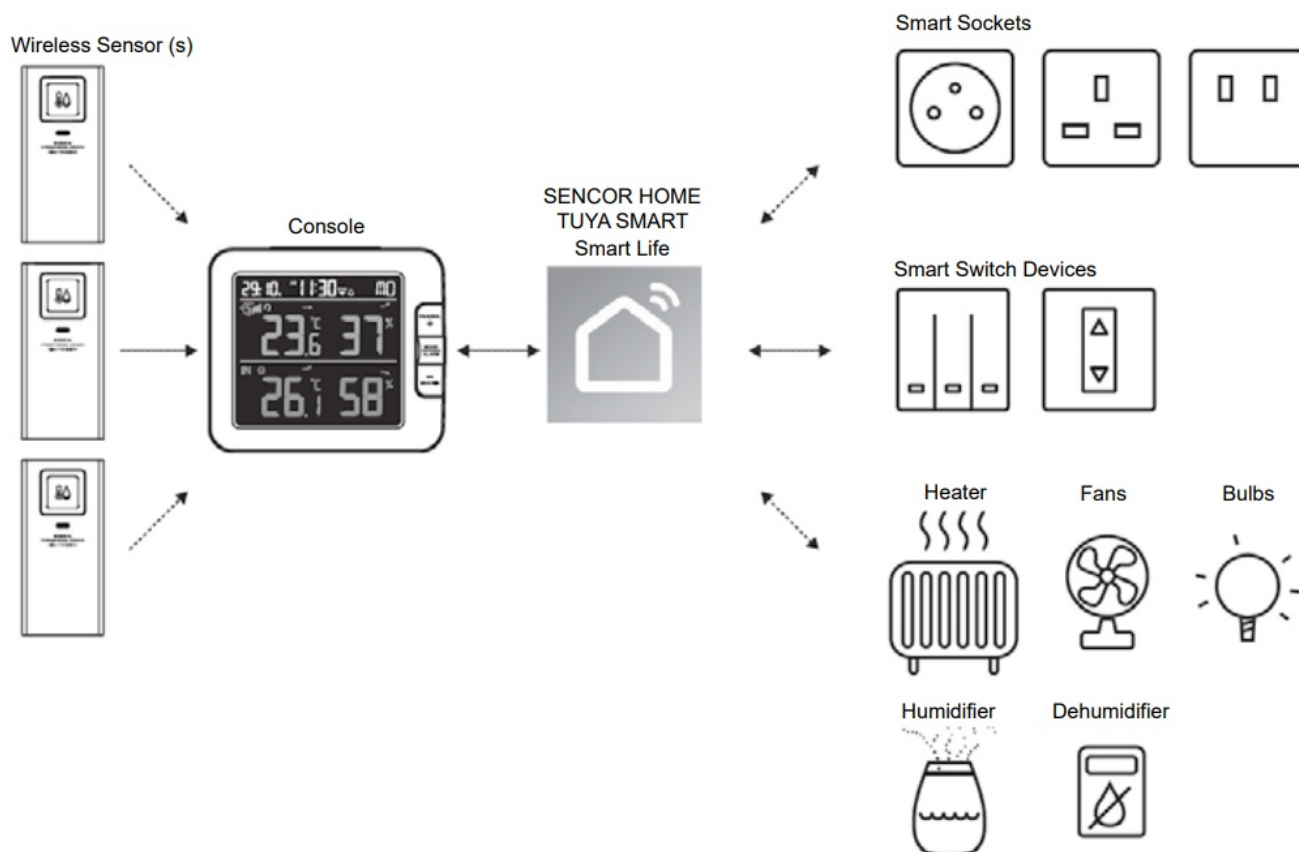
RESET is performed in the on state by pressing and holding the “RESET” button on the back of the SWS 8600. Successful reset will be announced by an audible tone.

BASIC DESCRIPTION OF THE APPLICATION

1	“BACK” button – go to the main screen.
2	SWS 8600 SH device name.
3	Advanced menu – Device information, sharing a device to another account, updating a device, REMOVING A DEVICE FROM THE ACCOUNT.
4	Display of measured values from the internal unit. Hold down the field to go to the chart view.
a	Temperature.
b	Humidity.
c	Maximum/minimum measured temperature value.
d	Maximum/minimum measured humidity value.
5	Display of measured values from the additional sensor. “CH1” indicates the channel on which the additional sensor is set. Hold down the field to go to the chart view.
6	Space for adding additional sensors “CH2 – CH7”
7	Option to switch between the available sensors to display a chart of the measured values.
8	Chart of measured values. Hold the field to go to the detailed chart view.
9	History of “Temperature”.
10	History of “Humidity”.
11	Display of values and “Day” chart.
12	Display of values and “Month” chart.

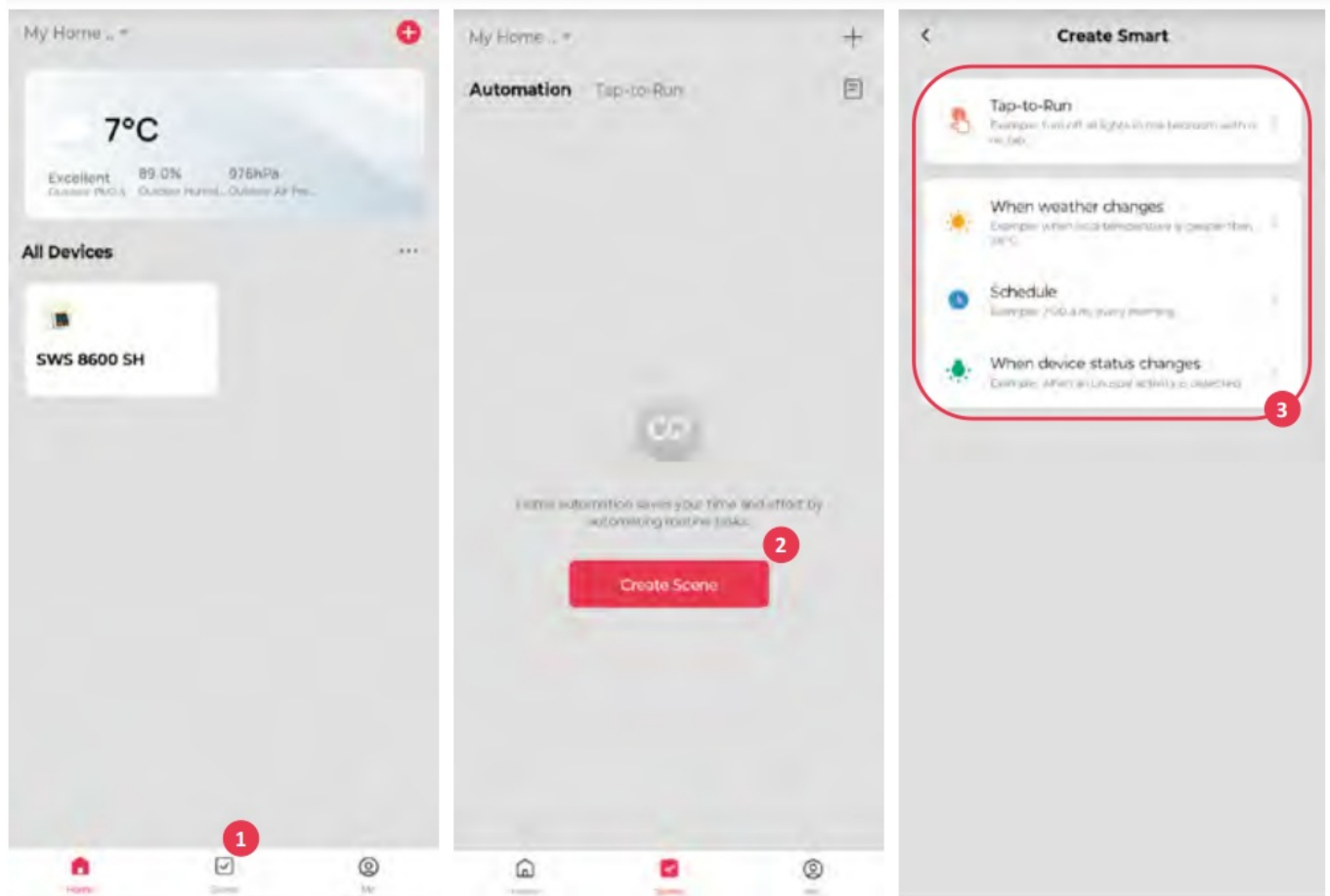
13	Display of values and “Year” chart.
14	Option to send an email with the measured values. Enter the email address where the email will be sent . The incoming email will contain a link to download the .xlsx document. The availability of the link to download the document is 7 days.
15	Detailed chart with the possibility of moving the measured values along the time axis.
16	Option to switch to the previous “Day/Month/Year” depending on the selected view.
17	The date of the displayed chart.
18	Option to move to the next “Day/Month/Year” depending on the selected view.
19	Alarm history.
20	Alarm settings. Set the values reached, at which you will be informed and subsequently recorded in the Alarm History “19”.
21	Option to change the displayed units °C / °F.

AUTOMATION WITH OTHER DEVICE USING TUYA SMART



IOT APPLICATIONS

Through the Tuya Smart App, you can create the temperature and humidity trigger conditions to control other Tuya Smart compatible device(s) automatically.



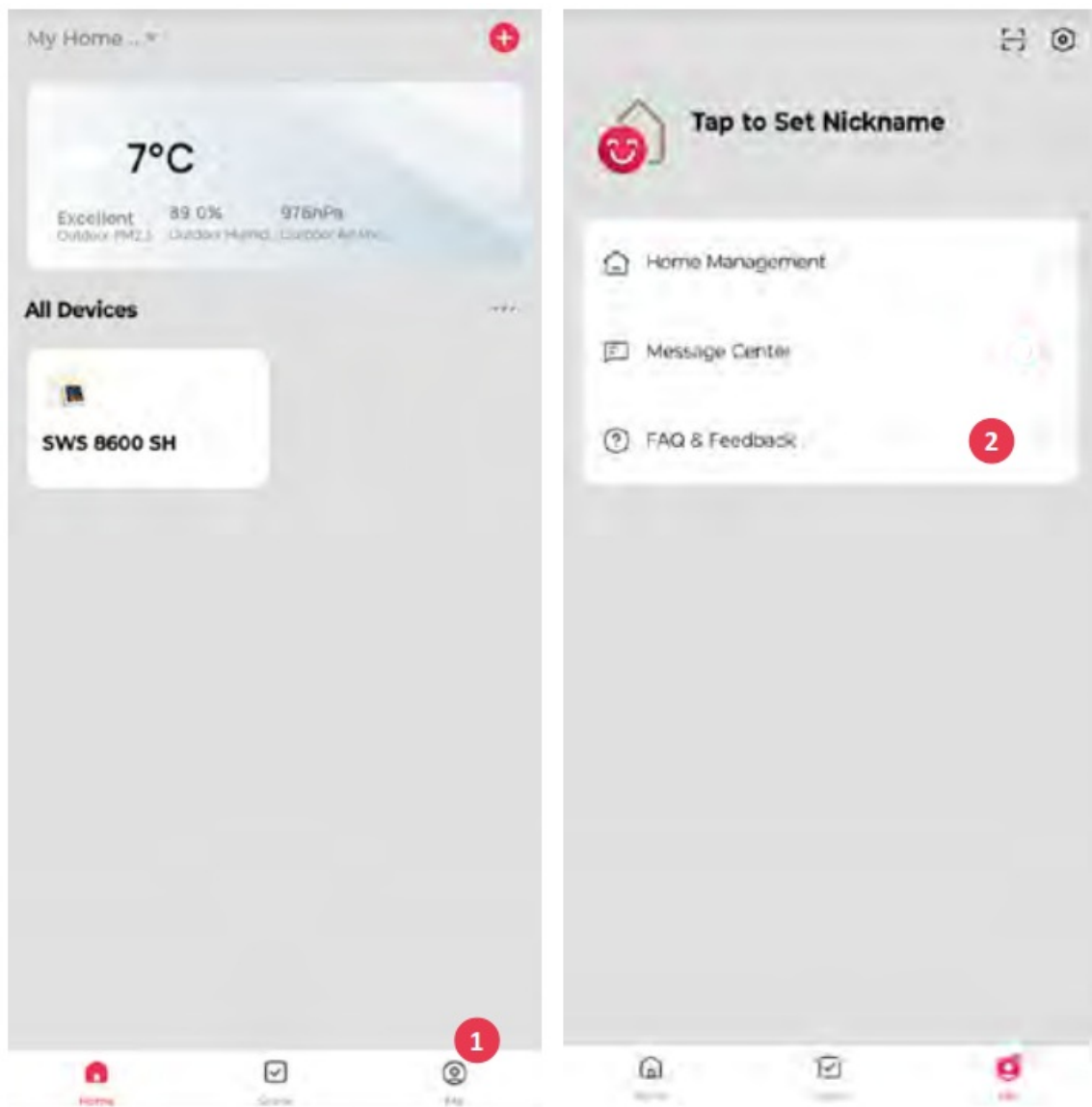
1	2	3
Tap the “ Scene” icon on Home screen, and follow the instruction to set condition and task.	Tap the “ + ” or “Create Scene” icon.	Tap one of below tag to set different trigger condition.

NOTE

- Any tasks required or performed by third party devices are at user’s own choice and risk.
- Please note no guarantee can be assumed regarding the correctness, accuracy, uptodateness, reliability and completeness of IoT applications.

SCENE CREATION

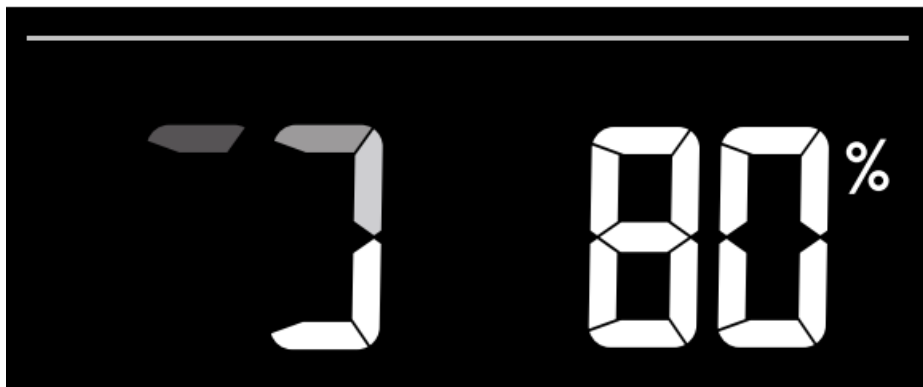
Tuya Smart have many advance features, please check the FAQ in the App to know more about Tuya Smart. Tap “Me” in home page then tap the FAQ & Feedback for more detail.



1	2
Press the “Me” button.	Select FAQ and feedback.

FIRMWARE UPDATE

The console can be updated through your WI-FI network. If new firmware is available, a notification or pop up message will be shown on your mobile when you open the App. Follow the instruction in the App to do the update. During the update process, the console will show the progress status percentage at the bottom of the screen. Once the update complete, the console screen will reset and back to normal mode. Please ignore App update fail message, if the console can restart and show the normal screen after the update process completed.



IMPORTANT NOTE:

- Please keep connecting the power during the firmware update process.
- Please make sure your console WI-FI connection is stable.
- When the update process start, do not operate the console until the update is finished.
- Settings and data maybe lost during update.
- During firmware update the console will stop upload data to the cloud server. It will reconnect to your WI-FI router and upload the data again once the firmware update succeed. If the console cannot connect to your router, please enter the SETUP page to setup again.
- Firmware update process have potential risk, which cannot guarantee 100% success. If the update fail, please redo the above step to update again.
- If firmware update fail, press and hold the [C/F] and [REFRESH] key at the same time with 10 seconds to back to original version, then redo the update procedure again.

INSTRUCTIONS AND INFORMATION ON THE DISPOSAL OF DISCARDED PACKAGING MATERIALS

Take the packaging material to a collection yard for disposal.

DISPOSAL OF DISCARDED ELECTRICAL AND ELECTRONIC EQUIPMENT

This symbol on the product, accessory or packaging indicates that the product must not be treated as normal household waste. Please dispose of this product in a collection yard designated for the recycling of electrical and electronic equipment. In some EU countries or in some European countries, you can return your products to your local retailer when you buy an equivalent new product. Correct disposal of this product helps save valuable natural resources and prevents possible adverse impacts on the environment and human health that might be caused by improper waste disposal. Please contact your local authority or the nearest waste collection yard for further details. Improper disposal of this type of waste may be subject to a legal fine.



For companies in the European Union

If you need to dispose of electrical or electronic equipment, ask your dealer or supplier for the necessary information.

Disposal in countries outside the European Union

To dispose of this product, please ask your local authorities or dealer for the necessary information on correct disposal.



This product complies with EU requirements.

FAST ČR, a. s. hereby declares that the radio device type SWS 8600 complies with Directive 2014/53/EU. For full

version of the EU declaration of conformity, please refer to the website: www.sencor.com

Changes in the text, design and technical specifications may be made without prior notice and we reserve the right to make such changes.

The original version is in Czech.

Manufacturer: FAST ČR, a.s., U Sanitasu 1621, Říčany 251 01, Czech Republic

Authorized service centers: Visit www.sencor.com for detailed information about authorized service centers.

Warranty conditions

Warranty card is not a part of the device packaging.

This product is warranted for the period of 24 months from the date of purchase to the end-user. Warranty is limited to the following conditions. Warranty is referred only to the customer goods using for common domestic use. The claim for service can be applied either at dealer's shop where the product was bought, or at below mentioned authorized service shops. The end-user is obligated to set up a claim immediately when the defects appeared but only till the end of warranty period. The end user is obligated to cooperate to certify the claiming defects. Only completed and clean (according to hygienic standards) product will be accepted. In case of eligible warranty claim the warranty period will be prolonged by the period from the date of claim application till the date of taking over the product by end-user, or the date the end-user is obligated to take it over. To obtain the service under this warranty, end-user is obligated to certify his claim with duly completed following documents: receipt, certificate of warranty, certificate of installation.

This warranty is void especially if apply as follows:

- Defects which were put on sale.
- Wear-out or damage caused by common use.
- The product was damaged by unprofessional or wrong installation, used in contrary to the applicable instruction manual, used in contrary to legal enactment and common process of use or used for another purpose which has been designed for.
- The product was damaged by uncared-for or insufficient maintenance.
- The product was damaged by dirt, accident of force majeure (natural disaster, fire, and flood).
- Defects on functionality caused by low duality of signal, electromagnetic field interference etc.
- The product was mechanically damaged (e.g. broken button, fall).
- Damage caused by use of unsuitable media, fillings, expendable supplies (batteries) or by unsuitable working conditions (e.g. high temperatures, high humidity, quakes).
- Repair, modification or other failure action to the product by unauthorized person.
- End-user did not prove enough his right to claim (time and place of purchase).
- Data on presented documents differs from data on products.
- Cases when the claiming product cannot be indentified according to the presented documents (e.g. the serial number or the warranty seal has been damaged).

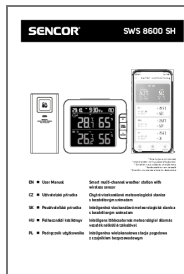
Manufacturer:

FAST ČR, a.s., U Sanitasu 1621, Říčany 251 01, Czech Republic

Visit www.sencor.com for detailed information about authorized service centers.

The original version of the instructions is in the Czech language, other language versions are made by the appropriate translation.

Documents / Resources



[Sencor SWS 8600SH Smart Multi Channel Thermo Hygro Station with Wireless Sensor \[pdf\] User Manual](#)
SWS 8600SH Smart Multi Channel Thermo Hygro Station with Wireless Sensor, SWS 8600SH, Smart Multi Channel Thermo Hygro Station with Wireless Senso, hermo Hygro Station with Wireless Sensor, Station with Wireless Sensor, Wireless Sensor, Sensor

References

- [Fast Poland | Strona gÅ³wna](#)
- [Design and quality for you | Sencor.com](#)
- [Od televizorů přes kuchyňské roboty až po koloběžky | Sencor.cz](#)
- [Élvezze az élet apró örömeit! | Sencor.hu](#)
- [Małe AGD do kuchni, TV, Audio, Wideo, Zdrowie i Uroda, Biuro i Akcesoria | Sencor.pl](#)
- [Dizajn a kvalita pre Vás | Sencor.sk](#)
- [Békéltető testületek](#)
- [Fogyasztói Portál](#)
- [User Manual](#)

[Manuals+](#), [Privacy Policy](#)

This website is an independent publication and is neither affiliated with nor endorsed by any of the trademark owners. The "Bluetooth®" word mark and logos are registered trademarks owned by Bluetooth SIG, Inc. The "Wi-Fi®" word mark and logos are registered trademarks owned by the Wi-Fi Alliance. Any use of these marks on this website does not imply any affiliation with or endorsement.