



# SENA SF4 Bluetooth Communication System User Guide

[Home](#) » [Sena](#) » SENA SF4 Bluetooth Communication System User Guide 

## Contents

- [1 SF4 Bluetooth Communication System](#)
- [2 Product Information](#)
- [3 Product Usage Instructions](#)
- [4 Installation](#)
- [5 Sena Motorcycles App](#)
- [6 Sena Device Manager](#)
- [7 Button Operation](#)
- [8 Setting](#)
- [9 Troubleshooting](#)
- [10 Factory Reset](#)
- [11 Documents / Resources](#)
  - [11.1 References](#)
- [12 Related Posts](#)

**SENA**

## SF4 Bluetooth Communication System



## Product Information

The Sena SF4 is a Bluetooth communication device specifically designed for motorcycles. It allows riders to connect wirelessly with other riders, make and receive phone calls, listen to music, and even listen to FM radio. The device comes with various features such as intercom pairing, voice dialing, speed dialing, and volume

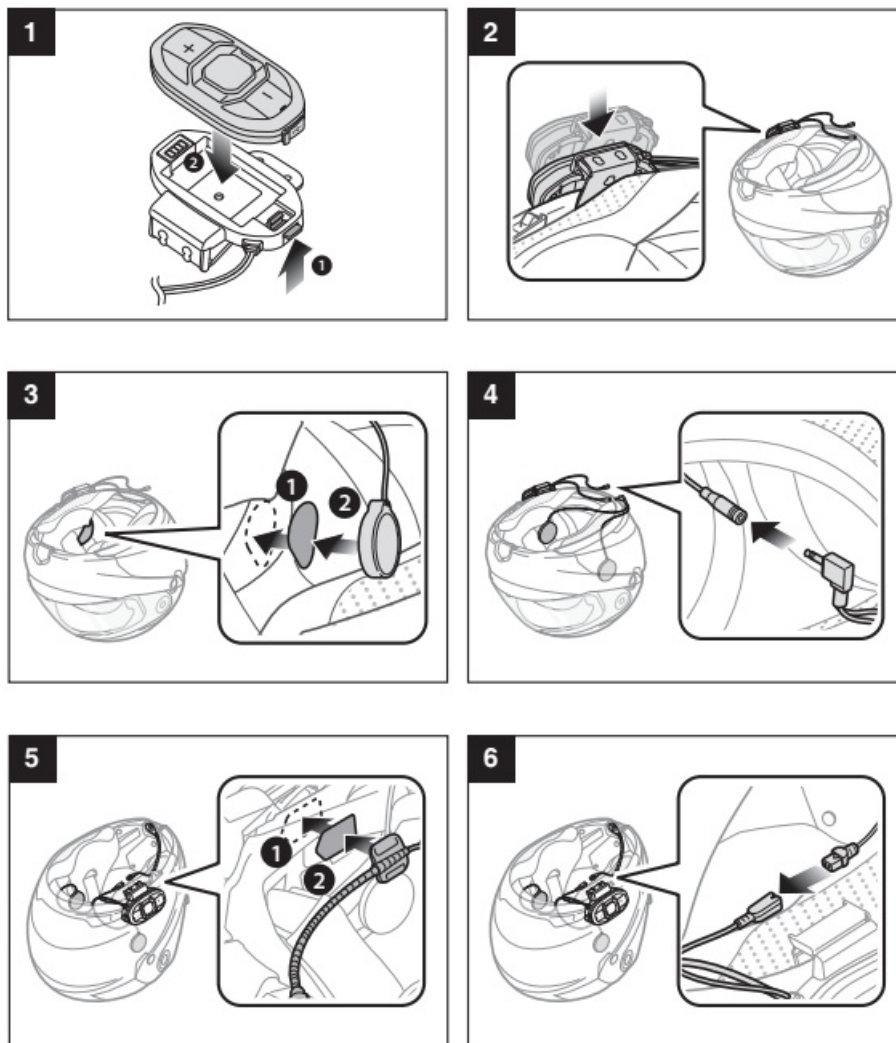
adjustment.

## Product Usage Instructions

1. **Charging:** Connect the Sena SF4 to a power source using the provided charging cable. The charging LED will indicate the battery level during charging.
2. **Power On/Off:** Press and hold the power button to turn on the device. To turn it off, press and hold the power button again.
3. **Volume Adjustment:** Tap the center button and the (+) button to increase the volume. Tap the center button and the (-) button to decrease the volume.
4. **Answering/Ending Phone Calls:** To answer an incoming call, tap the center button. To end a call, press and hold the center button for 2 seconds.
5. **Voice Dialing:** Press and hold the center button for 3 seconds to activate voice dialing on your phone.
6. **Intercom Pairing:** Press and hold the center button for 5 seconds until the LED starts flashing red. Then, tap the center button on any one of the two headsets you want to pair with.
7. **Playing/Pausing Bluetooth Music:** Press the center button for 1 second to play or pause music played through Bluetooth.
8. **FM Radio:** Press and hold the (-) button for 1 second to turn the FM radio on/off. Double tap the (+) button or the (-) button to seek stations. Press the (+) button for 1 second to scan up the FM band. Press the center button for 1 second to select a preset station.
9. **Setting Configuration Menu:** Press and hold the center button for 10 seconds to access the setting configuration menu.
10. **Troubleshooting Factory Reset:** If you want to restore the Sena SF4 to factory default settings, use the Factory Reset in the configuration menu. The headset will automatically restore the default settings and turn off.
11. **Fault Reset:** If the Sena SF4 is not working properly, gently push the pin-hole reset button on the back of the main unit to reset it.

For more information and customer support, visit [sena.com](https://sena.com).

## Installation



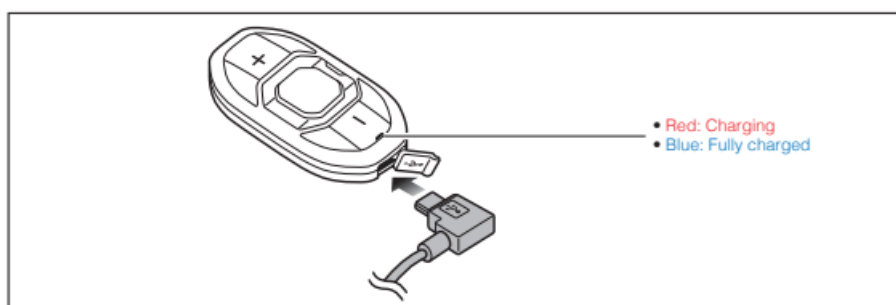
## Sena Motorcycles App

- **Download**
  - **Android:** Google Play Store > Sena Motorcycles
  - **iOS:** App Store > Sena Motorcycles

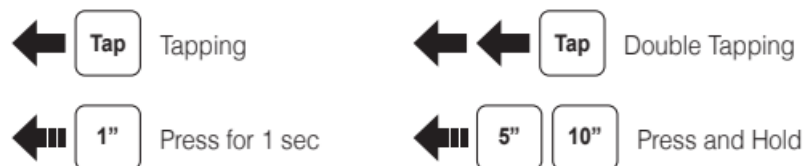
## Sena Device Manager

The Sena Device Manager allows you to upgrade the firmware and configure its settings directly from your PC or Apple computer. Download the Sena Device Manager from [sena.com](http://sena.com).

## Charging



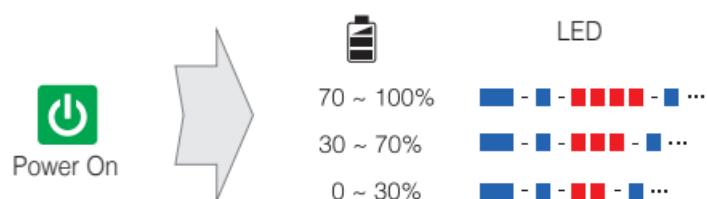
## Button Operation



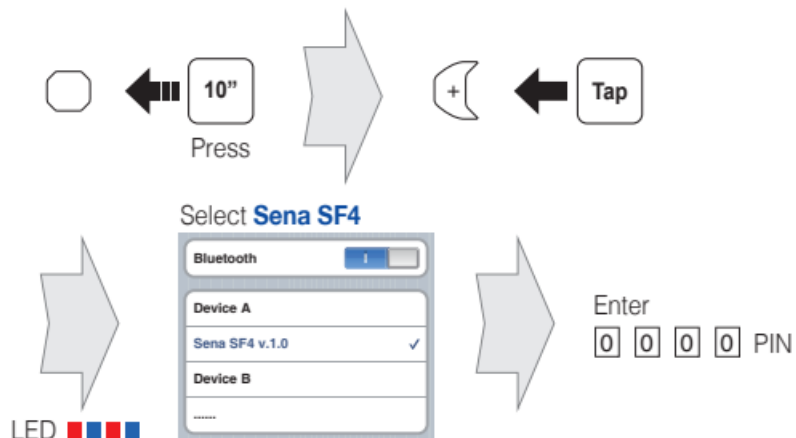
## Power On/Off Volume Adjustment



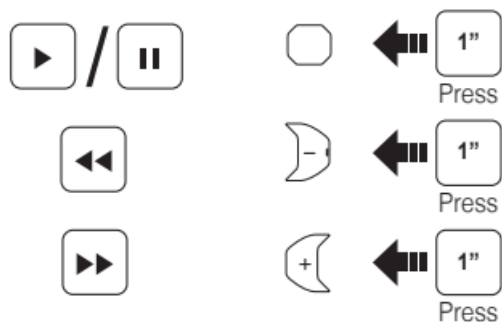
## Battery Check



## Phone, Music Pairing



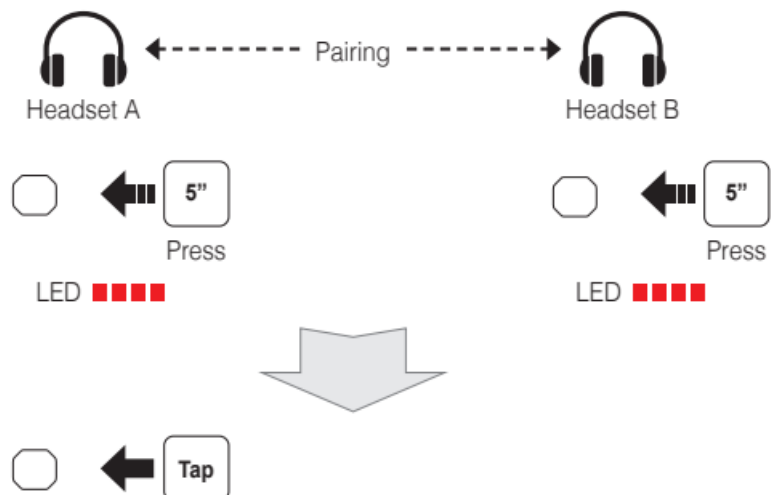
## Music Operation



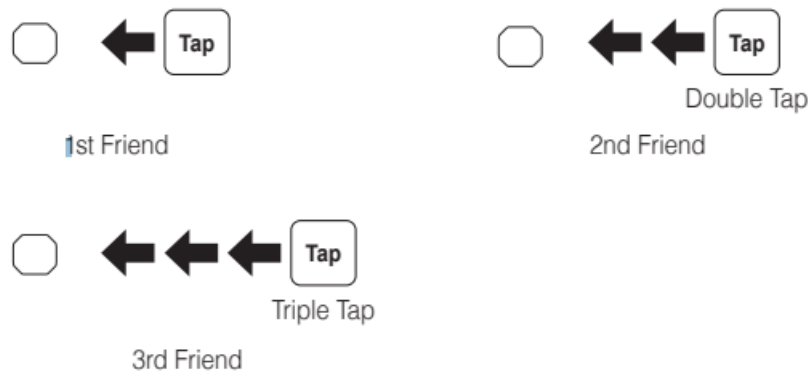
## Mobile Phone Call Making and Answering



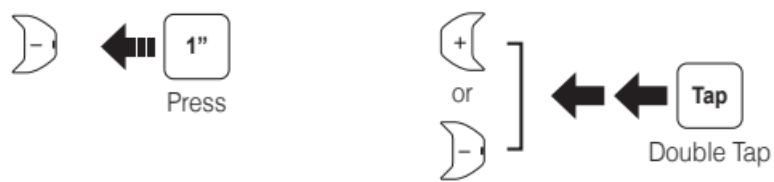
## Intercom Pairing



## Intercom Start/End



### Radio On/Off/Radio Seek Stations



### Radio Scan Up FM Band



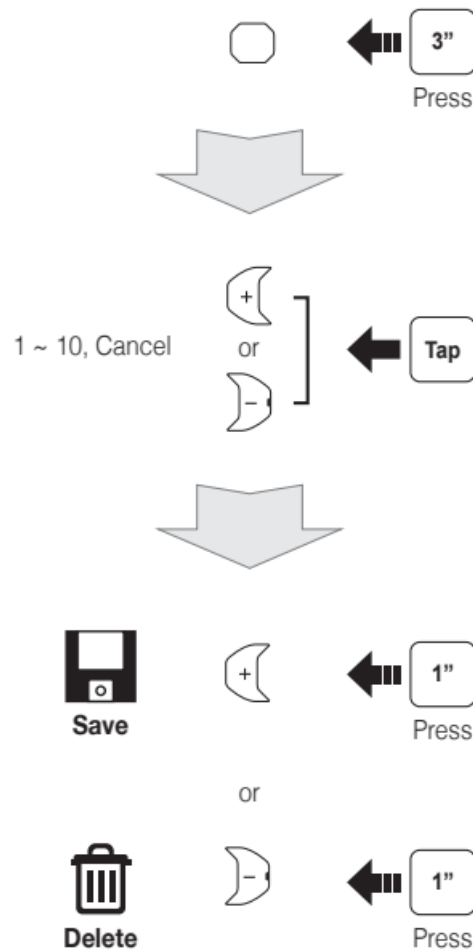
### Save to preset while scanning



### Radio Move to Preset Station



### Radio Save or Delete Preset



## Setting

### Configuration Menu



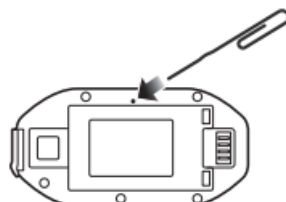
## Troubleshooting

### Factory Reset

- If you want to restore the Sena SF4 to factory default settings, use the Factory
- Reset in the configuration menu. The headset automatically restores the default settings and turns off.

### Fault Reset

If the Sena SF4 is not working properly for any reason, reset by gently pushing the pin-hole reset button on the back of the main unit.



## SF Series Quick Reference

Type	Operation	Button Command	LED
Basic Function	Power on	Press the Center Button and the (+) Button for 1 second	Solid blue
	Power off	Tap the Center Button and the (+) Button	Solid red
	Volume adjustment	Tap the (+) Button or the (-) Button	—
	Microphone Mute	Press the Center Button and the (-) Button for 1 second	—
Mobile Phone	Answer mobile phone call	Tap the Center Button	—
	End mobile phone call	Press the Center Button for 2 seconds	—
	Voice dial	Press the Center Button for 3 seconds	—
	Speed dial	Press the (+) Button for 3 seconds	—
	Reject incoming call	Press the Center Button for 2 seconds	—
Intercom	Intercom pairing	Press the Center Button for 5 seconds	Red flashing
		Tap the Center Button of any one of the two headsets	
	Start/End each intercom	Tap the Center Button	—
	End all intercoms**	Press the Center Button for 3 seconds	—
	Start Group Intercom**	Tap the (+) Button and the (-) Button at the same time	Green flashing
	End Group Intercom**	Press the Center Button for 3 seconds	—
Music	Play/Pause Bluetooth music	Press the Center Button for 1 second	—
	Track forward/back	Press the (+) Button or the (-) Button for 1 second	—
	FM radio on/off	Press the (-) Button for 1 second	—
	Select preset	Press the Center Button for 1 second	—
	Seek stations	Double tap the (+) Button or the (-) Button	—



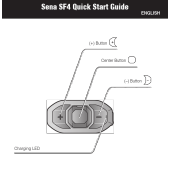
FM Radio	Scan up FM band	Press the (+) Button for 1 second	—
	Stop scanning	Press the (+) Button for 1 second	—
	Save preset while scanning	Tap the center Button	—

- Available in SF2 and SF4
- Available only in SF4

[www.sena.com](http://www.sena.com)

1.1.0\_EN\_September2022

## Documents / Resources



**Sena SF4 Quick Start Guide**

1.1.0

**1 Installation**

**2 Sena Motorcycle App**

**3 Sena Device Messages**

**4 Charging**

**5 Button Operation**

**6 Power On/Off**

**7 Volume Adjustment**

**8 Battery Check**

**9 Phone, Music, Pairing**

**10 Music Operation**

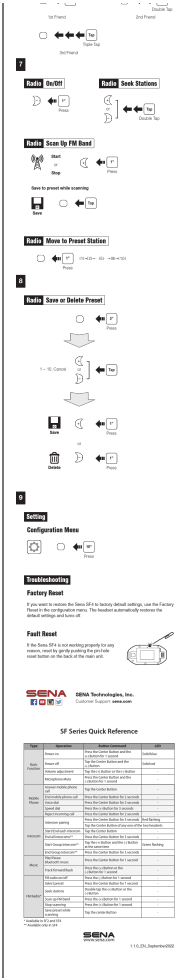
**11 Mobile Phone Call Making and Answering**

**12 Internet Pairing**

**13 Internet Start/End**

**SENA SF4 Bluetooth Communication System** [pdf] User Guide

SF4, SF4 Bluetooth Communication System, Bluetooth Communication System, Communication System



## References

- [Sena The Best Motorcycle & Action Sport Bluetooth Devices | Sena](#)