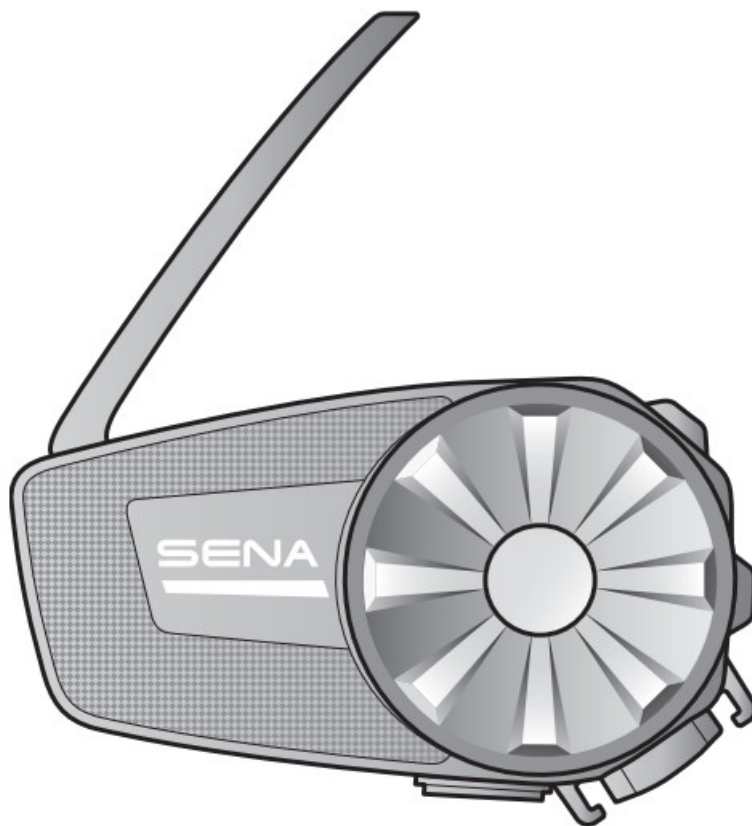




SENA P905379 Spider ST1 Mesh Intercom Headset User Guide

[Home](#) » [Sena](#) » SENA P905379 Spider ST1 Mesh Intercom Headset User Guide 

SENA



SPIDER ST 1
MOTORCYCLE MESH COMMUNICATION SYSTEM

HD SPEAKERS

QUICK START GUIDE


1.1.0

Contents




- 1 Downloadable Sena Software
- 2 Product Details
- 3 Installation
- 4 Mesh Intercom Antenna
- 5 Icon Legend
- 6 Basic Operations
- 7 Checking the Battery Level
- 8 Phone Pairing
- 9 Using the Phone
- 10 Music Control
- 11 Mesh Intercom™
- 12 Open Mesh
- 13 Group Mesh.
- 14 Enable/Disable Mic (Default: Enable)
- 15 Reset Mesh
- 16 Configuration Menu Troubleshooting
- 17 Quick Reference
- 18 Documents / Resources
 - 18.1 References
- 19 Related Posts

Downloadable Sena Software

Download the SENA MOTORCYCLES App at Google Play Store or App Store.

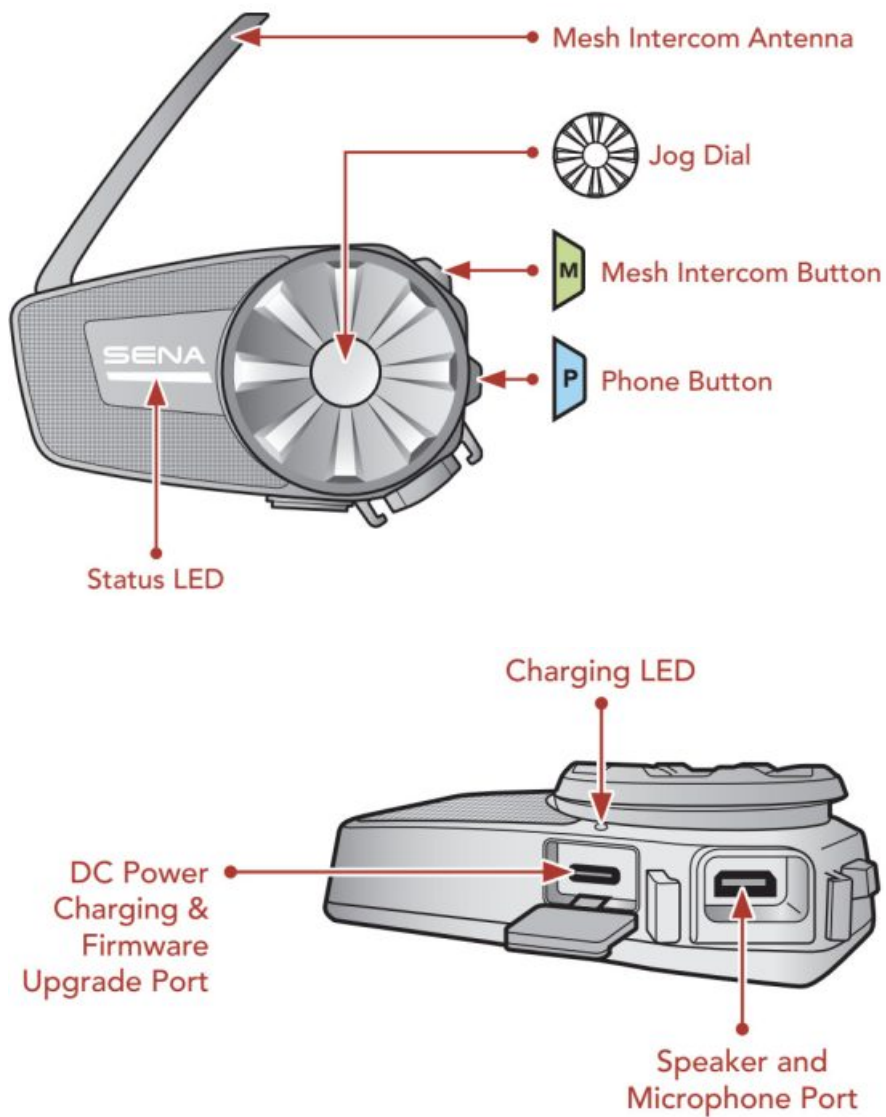
	SENA MOTORCYCLES
---	------------------

Download the following items at [sena.com](https://www.sena.com).

	Firmware
	Sena Device Manager <ul style="list-style-type: none">• Firmware upgrade• Device configuration setting
	Quick Start Guide, User's Guide

Follow us on Facebook, YouTube, Twitter, and Instagram to check the latest information and helpful tips.

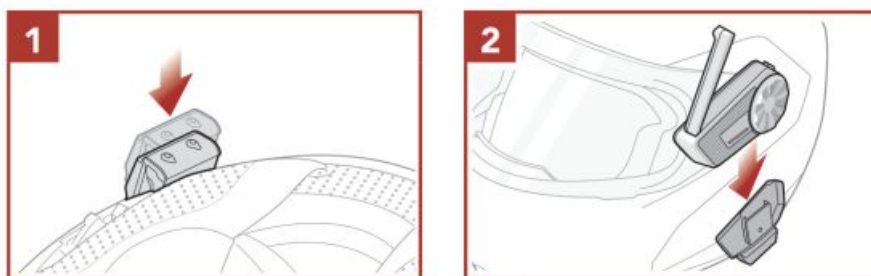
Product Details



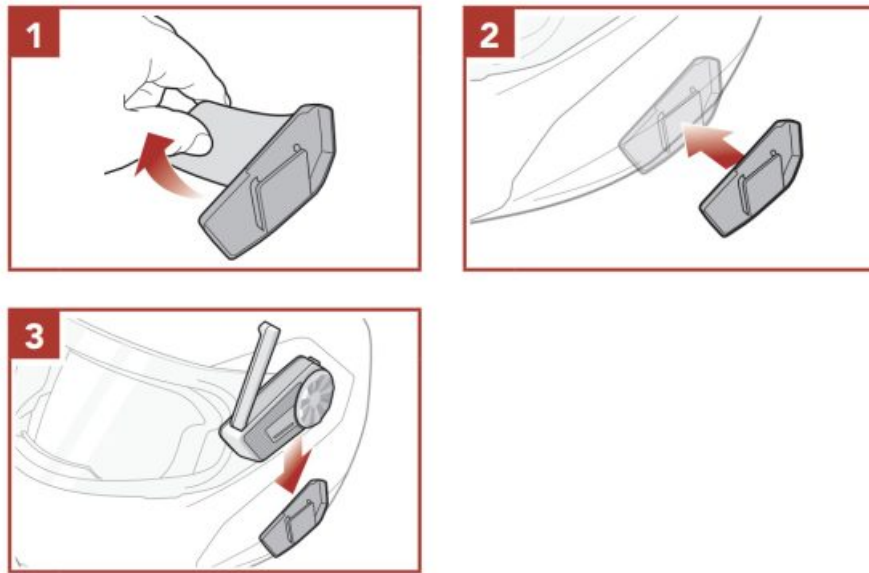
Installation

- For more information about installation, refer to the User's Guide.

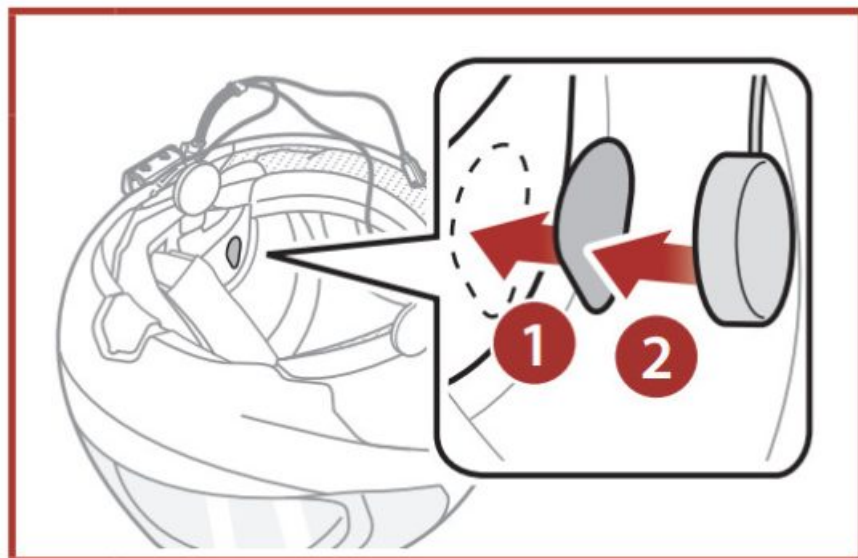
Using the Clamp Unit



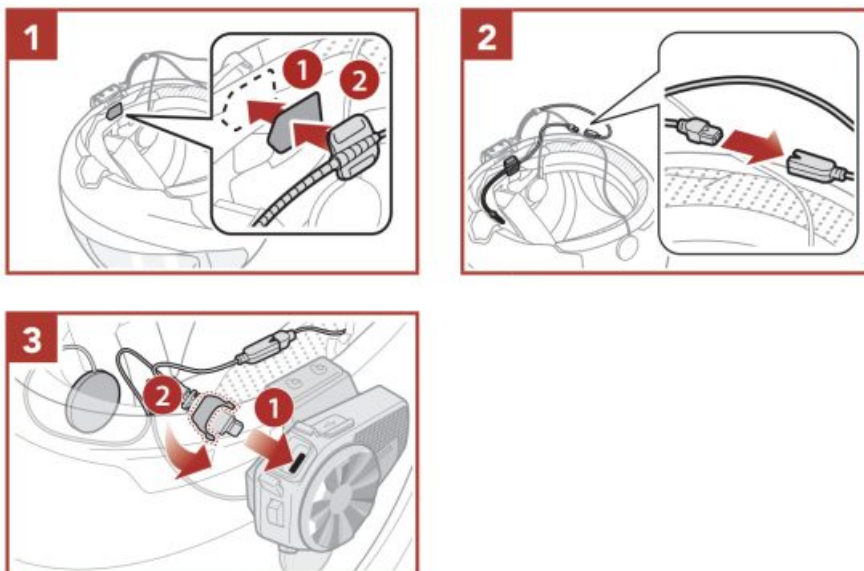
Using the Glued Surface Mounting Plate



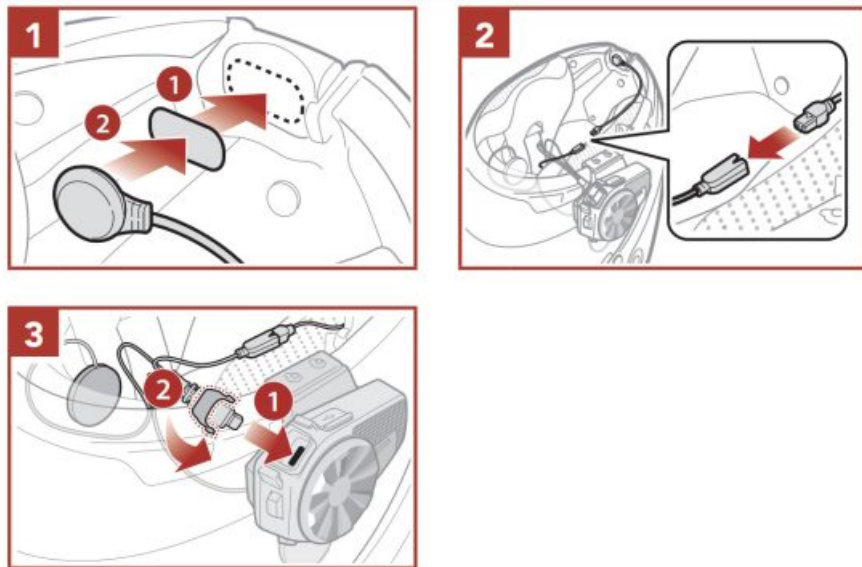
Installing the Speakers



Installing the Wired Boom Microphone

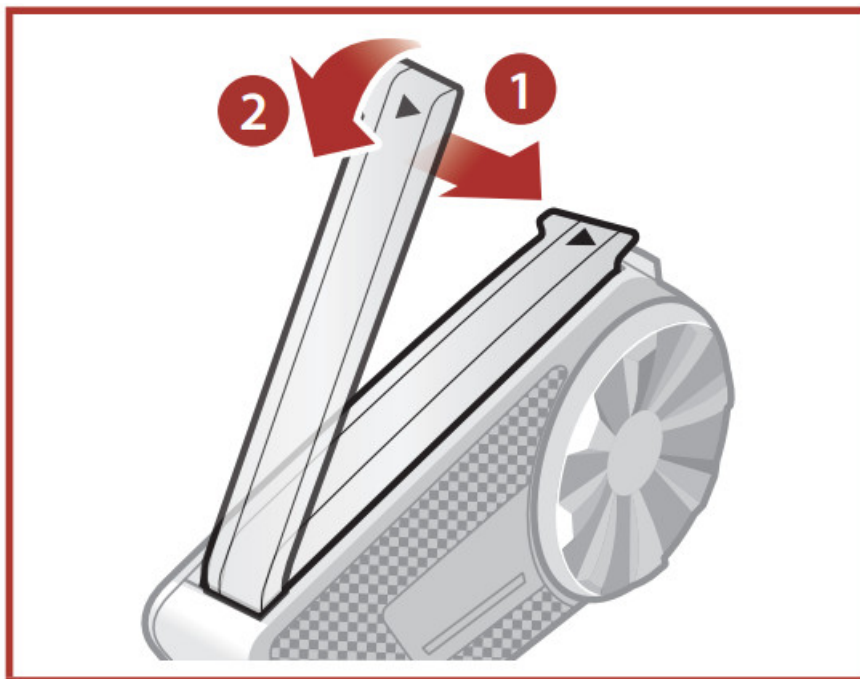


Installing the Wired Microphone



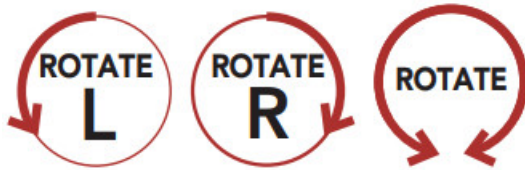




Mesh Intercom Antenna

Pull the Mesh Intercom Antenna outwards slightly to unfold it.

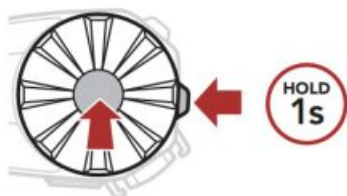


Icon Legend

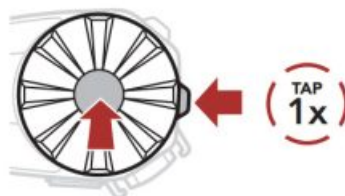
	Tap button/Jog Dial the specified number of times
	Press and Hold button/Jog Dial for the specified amount of
	Rotate Jog Dial clockwise (right) or counterclockwise (left).
	Rotate while Pressing Jog Dial clockwise (right) or counter
	Audible prompt

Basic Operations

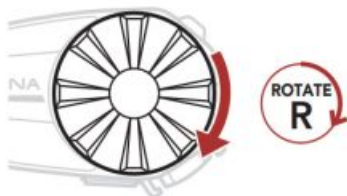
Powering On



Powering Off



Volume Up

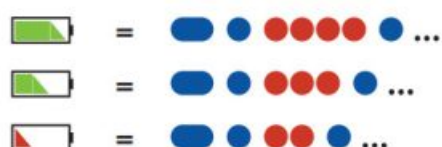


Volume Down



Checking the Battery Level

Powering On



Phone Pairing

When you initially turn on the headset:



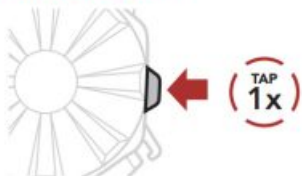
② Select SPIDER ST1 in the list of Bluetooth devices detected.



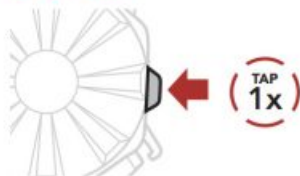
• For more information on phone pairing, refer to the User's Guide.

Using the Phone

Answer a Call



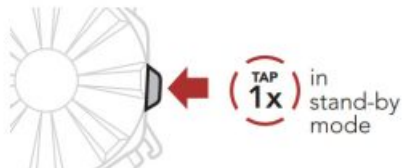
End a Call



Reject a Call



Voice Dial



Music Control

Play/Pause



Track Forward



Track Backward



Mesh Intercom™

Open Mesh™: communication within the same channel.

Group Mesh™: communication within the same private group.

- For more information on **Mesh Intercom**, refer to the User's Guide.

Mesh Intercom On



Mesh Intercom Off

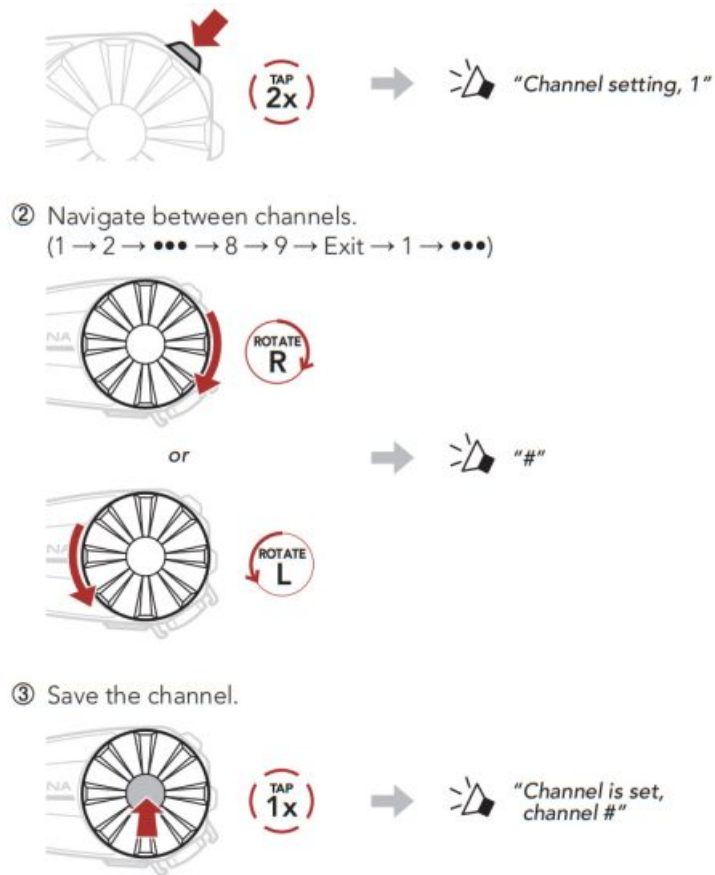


Note: When Mesh Intercom is on, the **SPIDER ST1** will automatically connect to nearby **SPIDER ST1** users and the headset will be in **Open Mesh (default: channel 1) initially**.

Open Mesh

Channel Setting (Default: channel 1) in Open Mesh

- ① Enter into the **Channel Setting**.



Note: You can use the **SENA MOTORCYCLES** App to change the channel.

Group Mesh.

Group Mesh is a closed group intercom function that allows users to join, leave, or rejoin a group intercom conversation without pairing each headset.

1) Creating a Group Mesh

Creating a Group Mesh requires two or more Open Mesh users.



① Users (You, B, and C) enter into Mesh Grouping to create a Group Mesh.



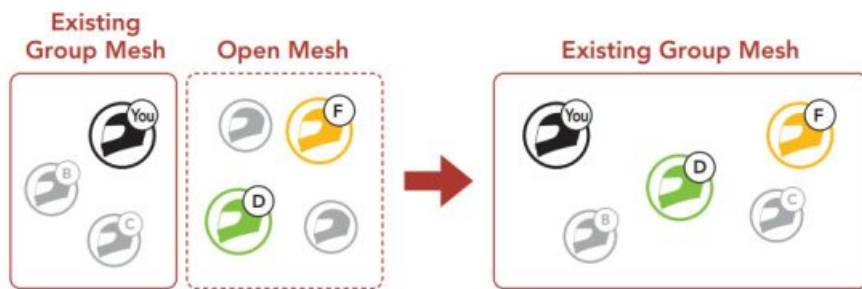
② When Mesh Grouping is completed, the users (You, B, and C) will hear a voice prompt on their headset as

Open Mesh switches to Group Mesh.



2) Joining an Existing Group Mesh

One of the current users in an Existing Group Mesh can allow new users (one or more) in Open Mesh to join the Existing Group Mesh.



① One (You) of the current users in the Existing Group Mesh and new users (D and F) in Open Mesh enter into Mesh Grouping to join the Existing Group Mesh...

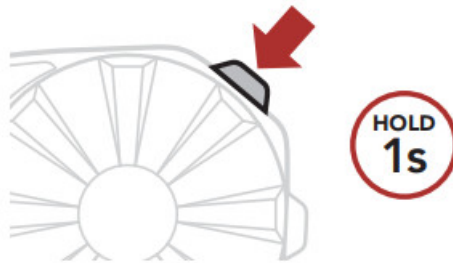


② When Mesh Grouping is completed, the new users (D and F) will hear a voice prompt on their headset as Open Mesh switches to Group Mesh.



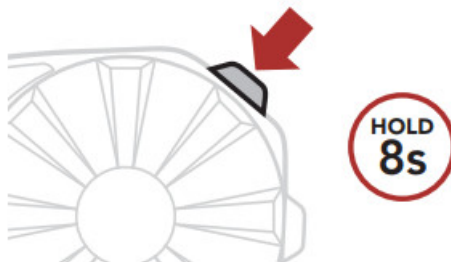
Enable/Disable Mic (Default: Enable)

Users can enable/disable the microphone when communicating in a **Mesh Intercom**.



Reset Mesh

If a headset in an **Open Mesh** or **Group Mesh** resets the **Mesh**, it will automatically return to **Open Mesh** (default: channel 1).



Configuration Menu

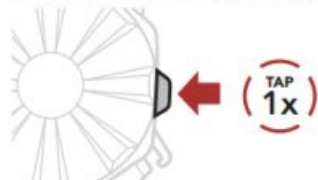
Accessing the Configuration Menu



Navigating Between Menu Options

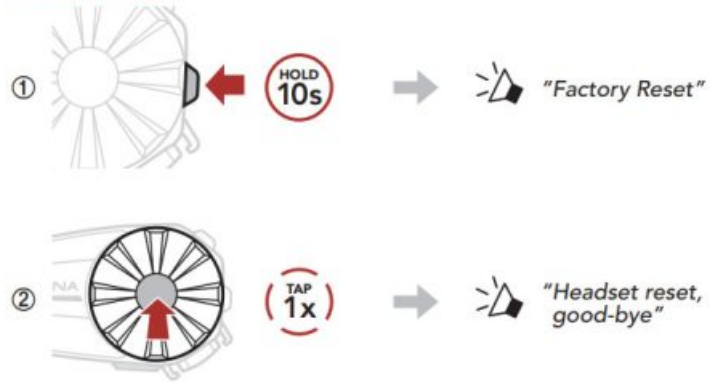


Execute Menu Options

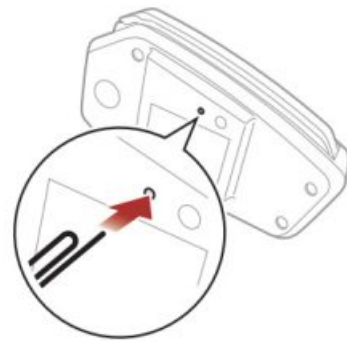


Troubleshooting

Factory Reset
























Fault Reset



Note: **Fault Reset** will not restore the headset to the factory default settings.

Quick Reference


TYPE	OPERATION	BUTTON COMMANDS
Basic Operations 	Power on /Power off	  HOLD 1s   TAP 1x
	Volume up / Volume down	 ROTATE R or ROTATE L

<div>Mobile Phone</div> 	Answer phone call	
	End phone call	
	Reject phone call	
	Voice Dial	
<div>Music</div> 	Play/Pause music	
	Track forward	
	Track backward	
<div>Mesh Intercom™</div> 	Mesh Intercom on/off	
	Channel setting	
	Mesh Grouping	
	Reset Mesh	
	Enable/Disable Mic	

SENA



Documents / Resources

	<p>SENA P905379 Spider ST1 Mesh Intercom Headset [pdf] User Guide P905379, Spider ST1 Mesh Intercom Headset, P905379 Spider ST1 Mesh Intercom Headset</p>
---	---

References

- [S The Best Motorcycle & Action Sport Bluetooth Devices | Sena](#)