



## semcorel T10001 CoCo Tablet User Guide

[Home](#) » [semcorel](#) » semcorel T10001 CoCo Tablet User Guide 

### semcorel T10001 CoCo Tablet User Guide

#### Contents

- [1 Safety Notice](#)
- [2 Accessory](#)
- [3 Functions](#)
- [4 Getting Started](#)
- [5 Pairing with Your Smartwatch](#)
- [6 Power Off and Charging](#)
- [7 Using the CoCo App](#)
- [8 FCC Warning](#)
- [9 Customer Support](#)
- [10 Documents / Resources](#)
  - [10.1 References](#)
- [11 Related Posts](#)

### Safety Notice

Before using this device, please read the information contained in this document.

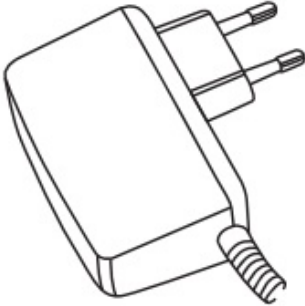
1. Do not use this device when driving.
2. Keep this device away from medical equipment.
3. Turn off this device while aboard an airplane.
4. Do not disassemble this device. Contact Semcorel support for repair information.
5. Keep this device away from magnetic media.
6. Do not use this device in high temperature environments or near flammable liquids.
7. Keep this device and accessories away from small children.
8. Keep this device away from liquids.

## Accessory

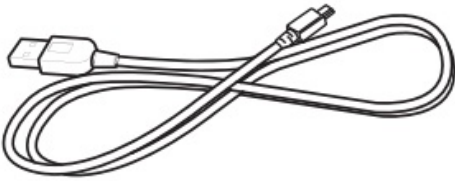
- Tablet



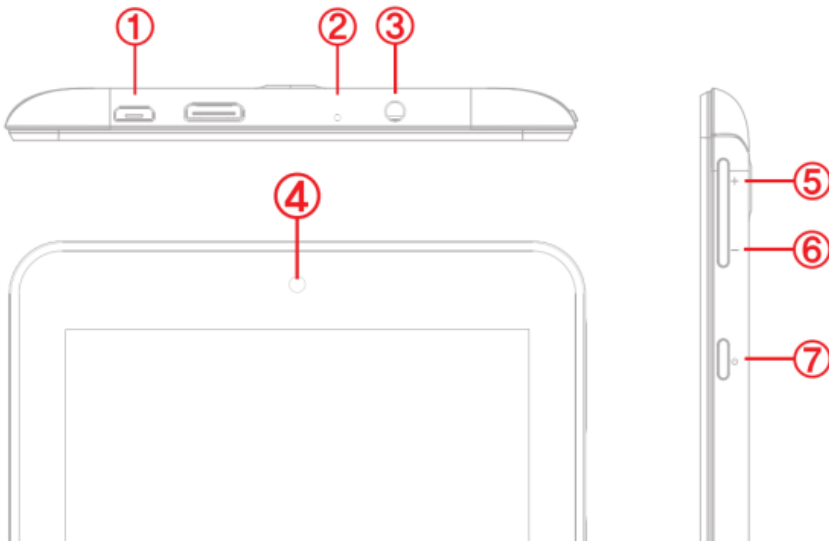
- Charger



- USB Cable



## Functions



1. USB Charger
2. Reset
3. Headphone Jack
4. Front Camera
5. Volume Increase

6. Volume Down

7. Power on/off

## **Getting Started**

Press the power button for 3 seconds to turn on the device. The first time you power on you must configure the device for your WiFi network. Follow the instructions on the screen to select your network and enter your password.

After completing setup, the device should launch the CoCo Mobile App. Enter the account ID and Password provided by your caregiver.

## **Pairing with Your Smartwatch**

To get the most out of your CoCo Tablet, you should pair it with your Smartwatch. After you log in to the CoCo App, it will walk you through the steps required.

CoCo Tablet is compatible with CoCo watches as well as models from Fitbit. See our website for a complete list and pairing instructions.

## **Power Off and Charging**

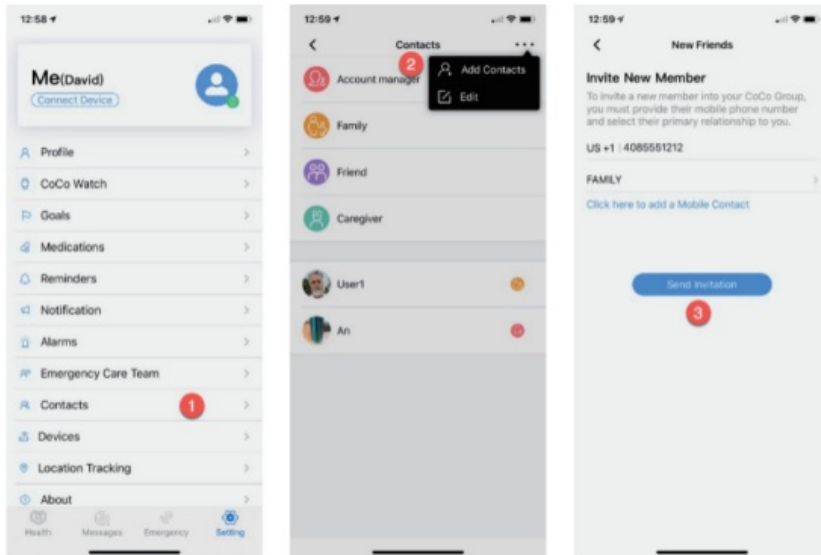
Press and hold the power button until the power off screen appears. Select the Power Off option and the screen will shut off. To charge the device, connect the USB charging cable to the port on the top of the Tablet.

## **Using the CoCo App**

The CoCo App enables you to remain Constantly Connected with your Caregiver and loved ones. CoCo provides:

- Secure Video Calls with your Contacts
- Private Message Feed
- Medication Reminders
- SOS Call
- Emergency Care Team

This App is preloaded on the T1 Tablet and available to download for any Android phone or iPhone. To invite your loved ones: Select the settings page on CoCo App, Select Contacts **(1)**, Click the menu at the top of the page and select Add Contacts **(2)**. Enter their mobile phone number, and select whether they are family members or friends. Then click Send Invitation **(3)**.



## FCC Warning

This device complies with part 15 of the FCC Rules. Operation is subject to the following two conditions:

1. This device may not cause harmful interference.
2. this device must accept any interference received, including interference that may cause undesired operation.

Any Changes or modifications not expressly approved by the party responsible for compliance could void the user's authority to operate the equipment.

**Note:** This equipment has been tested and found to comply with the limits for a Class B digital device, pursuant to part 15 of the FCC Rules. These limits are designed to provide reasonable protection against harmful interference in a residential installation. This equipment generates uses and can radiate radio frequency energy and, if not installed and used in accordance with the instructions, may cause harmful interference to radio communications. However, there is no guarantee that interference will not occur in a particular installation. If this equipment does cause harmful interference to radio or television reception, which can be determined by turning the equipment off and on, the user is encouraged to try to correct the interference by one or more of the following measures:

- Reorient or relocate the receiving antenna.
- Increase the separation between the equipment and receiver.
- Connect the equipment into an outlet on a circuit different from that to which the receiver is connected.
- Consult the dealer or an experienced radio/TV technician for help.

The device has been evaluated to meet general RF exposure requirement. The device can be used in portable exposure condition without restriction.

## Customer Support


[www.semcorel.com](http://www.semcorel.com)

Semcorel Inc.

[support@semcorel.com](mailto:support@semcorel.com)

2540 N First St, San Jose CA 95131

## Documents / Resources

	<p><a href="#">semcorel T10001 CoCo Tablet</a> [pdf] User Guide T10001, 2AWOY-T10001, 2AWOYT10001, T10001 CoCo Tablet, T10001, CoCo Tablet</p>
---	--

## References

-  [Solutions](#)