



SelectBlinds Arch Window Shade Instruction Manual

[Home](#) » [SelectBlinds](#) » **SelectBlinds Arch Window Shade Instruction Manual** 

Contents

- 1 [SelectBlinds Arch Window Shade](#)
- 2 [Product Information](#)
- 3 [Installation Instructions](#)
- 4 [INSTALLATION INSTRUCTIONS](#)
- 5 [Child Safety](#)
- 6 [Documents / Resources](#)

SelectBlinds®

SelectBlinds Arch Window Shade



Product Information

Fan Style Arch Honeycomb Shades

The Fan Style Arch Honeycomb Shades are stationary window shades designed for half-circle and quarter-round windows. These shades provide privacy and light control while adding a decorative touch to your windows. The shades come with installation brackets and arch support clips for easy installation.

Installation Instructions

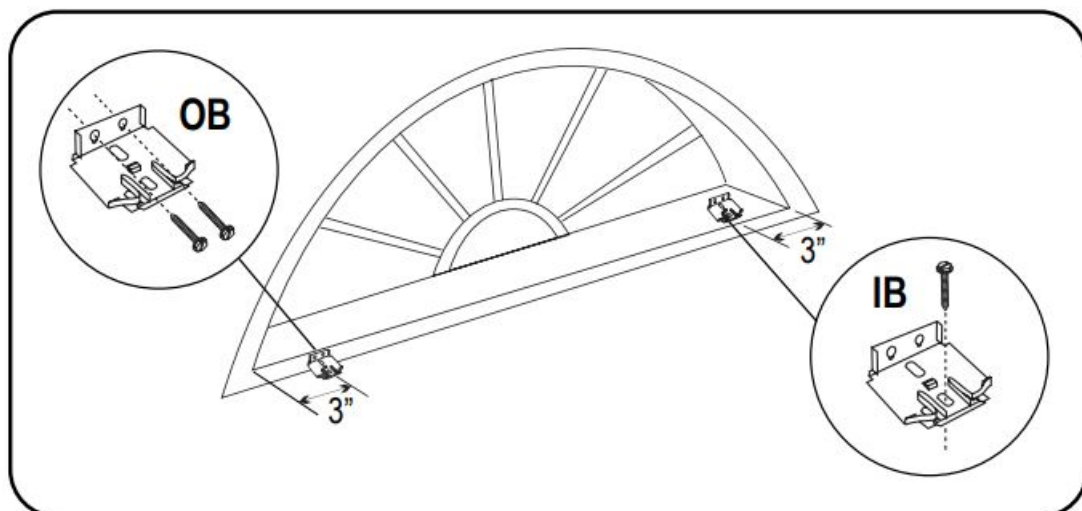
1. **Install the Brackets:** Start by installing the brackets. For the Fan Style Arch, position the brackets 3 inches from each side and space any remaining brackets evenly. Ensure that all brackets are aligned and level. For non-perfect half circle windows, position the brackets so that the arch is installed close to the original depth of the template.
2. **Shade Assembly:** If you have a perfect half-circle window, insert the plastic stiffener into the fabric stack. Note that non-perfect half circles have a straight edge and a trimmed (jagged) edge. Orient the fabric so that the trimmed edge becomes the outside edge of the arch.
3. **Arch Support Clip Installation:** Install the arch support clips at the same depth as the installation brackets. Start by placing a clip at the top center of the window opening and then space the remaining clips evenly. Screw the arch support clips to the mounting surface through the hole in the top of the clip or through the slot in the back.
4. **Shade Installation:** Install the shade by gently pressing the fabric into the arch support clips. Start with the top center support clip and then move to the first clip up from the bottom of the arch. Gently lift and fan out the fabric until the first section fits the window opening. Repeat this step for the remaining clips. Check the fit of the arch shade and reposition the fabric if necessary.
5. **Shade Removal (if necessary):** If you need to remove the shade, follow the instructions provided. Click the top center support clip to release the fabric, and then snap the remaining clips to free the fabric from each clip.

Child Safety: Please be aware of child safety precautions when using window shades. Keep cords out of children's reach and ensure that cords do not twist together or create loops. Consider purchasing cordless products or those with inaccessible cords to prevent strangulation hazards.

WARNING: Window blind cords can potentially strangle children. Take necessary precautions to prevent strangulation by purchasing cordless or inaccessible cord products.

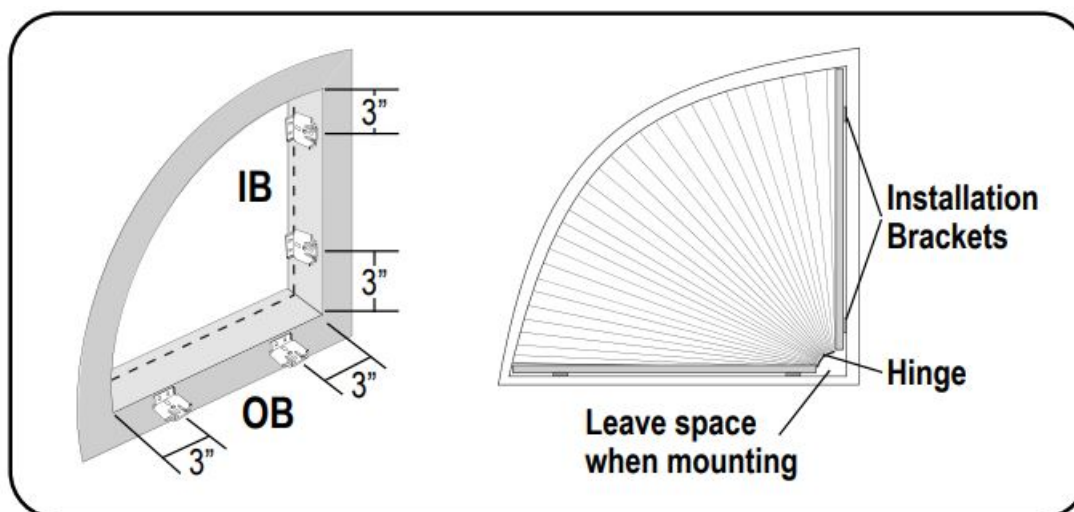
INSTALLATION INSTRUCTIONS

Install the Brackets — Fan Style Arch



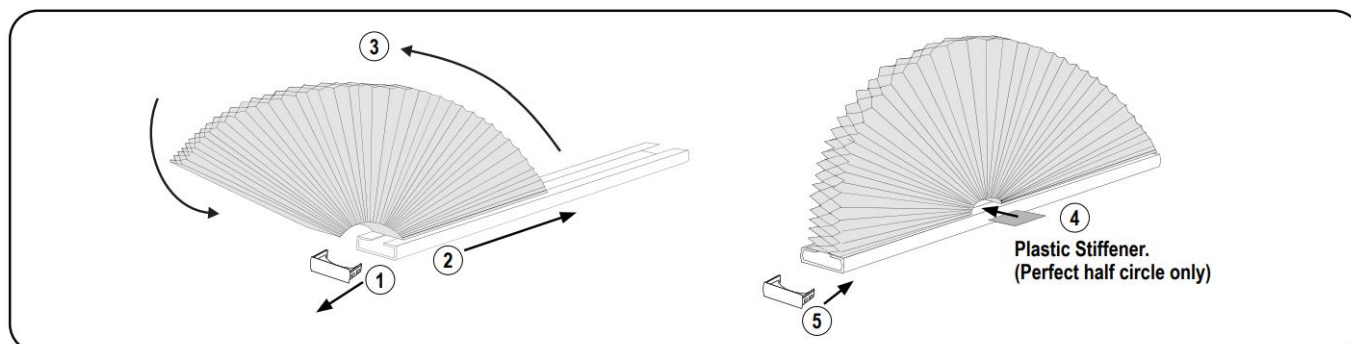
Mount end brackets 3" from each side and space any remaining brackets evenly. Make sure that all brackets are aligned and level. For the best fit on a non-perfect half circle in a deeply recessed window opening, position the brackets so that the arch is installed close to the original depth that the template was made.

Install the Brackets — Quarter Round



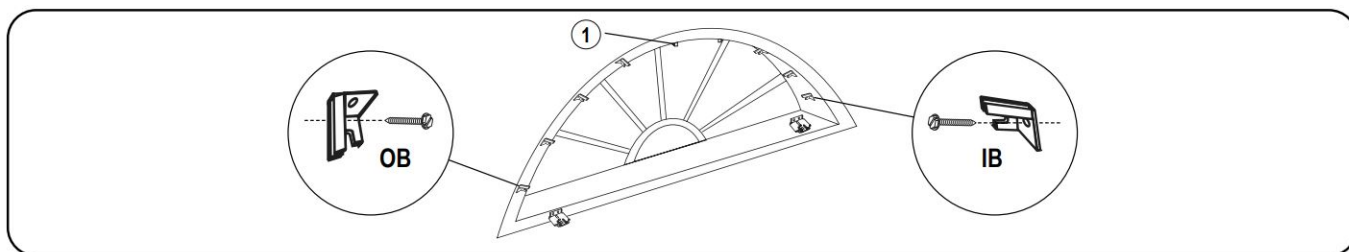
Mount the brackets to the vertical and horizontal mounting surfaces. Place brackets approximately 3" from the bottom and the top along the vertical mounting surface. Then, place a bracket approximately 3" in from both edges of the horizontal mounting surface.

Shade Assembly — Fan Style Arch Only



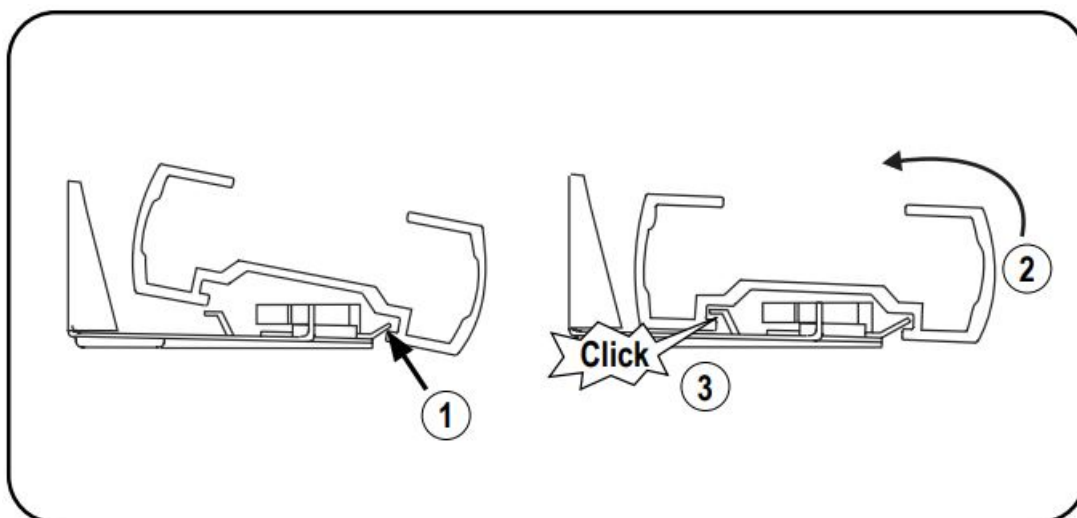
NOTE: Not perfect half circles have a straight edge on one end of the fabric and the other has a trimmed (jagged) edge. Orient the fabric so that the trimmed (jagged) edge, when fanned out, will become the outside edge of the arch. The straight side of the fabric stack will form the inner circle of the arch. First, remove the end caps from the rail. Then, fan the fabric out and slide the free stiffened cell of the fabric into the rail so that the ends of fabric match up with the ends of the bottom rail. Inside the center of the rail, mark where the stiffened fabric ends. For perfect half circles only, cut the plastic stiffener provided to fit the pivot opening. Then, peel the paper liner off the stiffener and adhere it to the bottom rail in the inner circle of the arch. Finally, install the endcaps back into place; the four circular dimples on the end caps should face down.

Arch Support Clip Installation

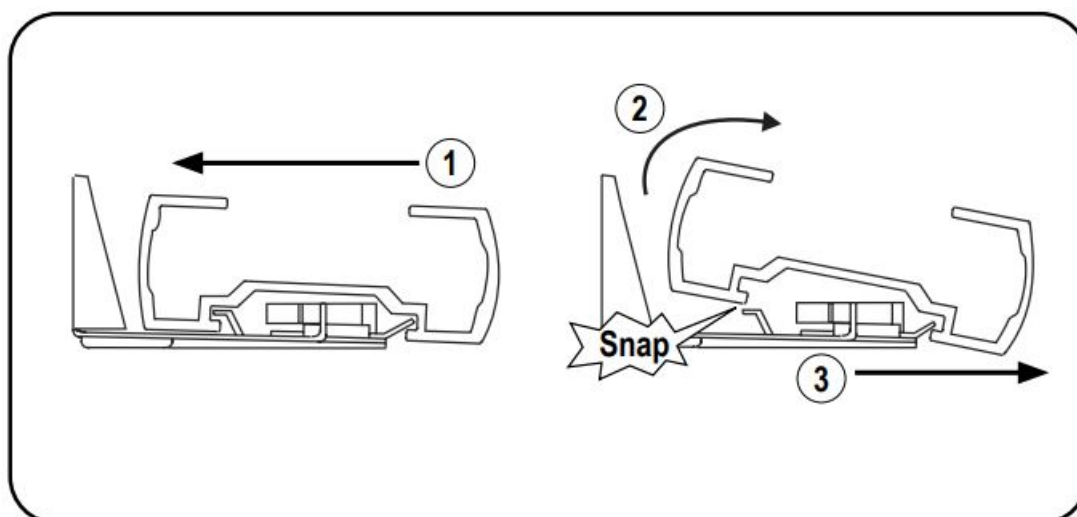


Position the clips so that the back of the clips are the same depth as the back of the installation brackets. First, place a clip at the top center of the window opening and then, space remaining clips evenly apart. Screw the arch support clips to the mounting surface through the hole in the top of the clip (IB) or through the slot in the back (OB).

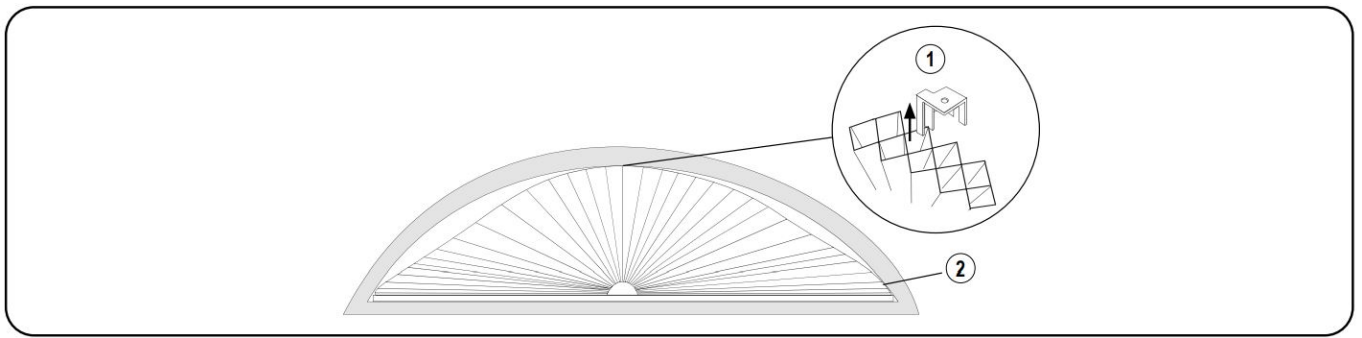
Shade Installation



Shade Removal — Only if necessary



Place Fabric Into Clips



Child Safety

Young children can **STRANGLE** in cord loops and in the loop above the cord stop. They can also wrap cords around their necks and **STRANGLE**.

- Always keep cords out of children's reach.
- Move cribs, playpens and other furniture away from cords. Children can climb furniture to get to cords.
- Do not tie cords together.
- Make sure cords do not twist together and create a loop.

WARNING

- Window Blind Cord Can **STRANGLE** Your Child. To prevent strangulation, purchase cordless products or products with inaccessible cords.



- 1023416

Documents / Resources

	<p>SelectBlinds Arch Window Shade [pdf] Instruction Manual Arch Window Shade, Arch, Window Shade, Shade</p>
--	---