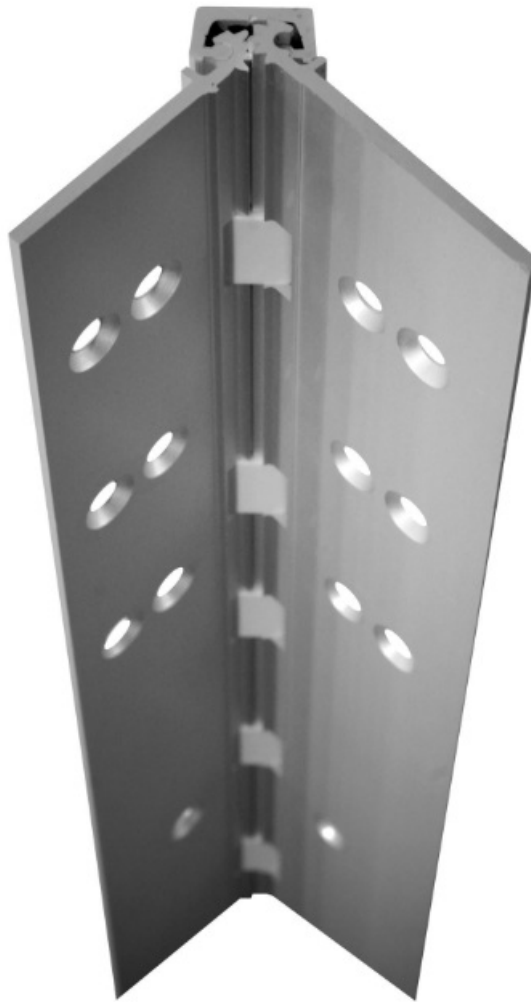


SELECT HINGES Concealed Continuous Geared Safety Hinge Instruction Manual

[Home](#) » [SELECT HINGES](#) » **SELECT HINGES Concealed Continuous Geared Safety Hinge Instruction Manual** 



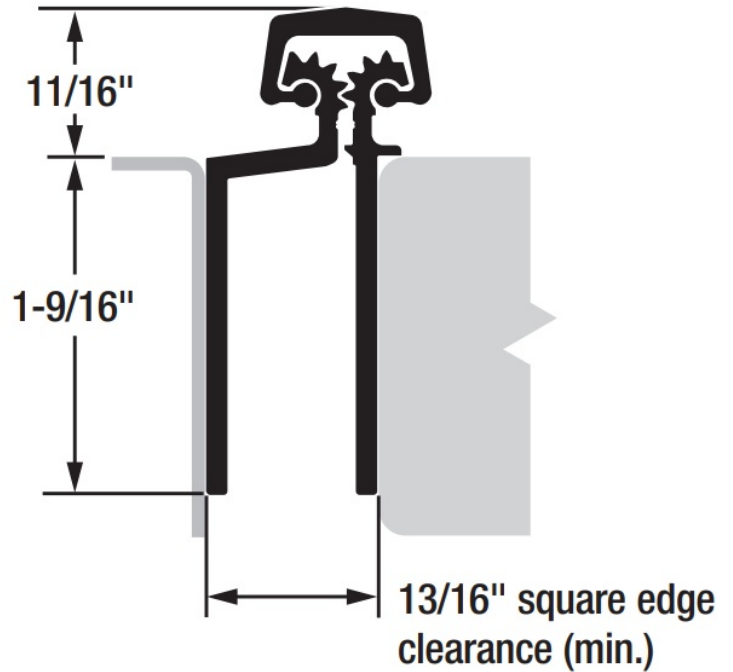


INSTALLATION INSTRUCTIONS

Contents

- [1 Concealed Continuous Geared Safety](#)
- [2 Calculating Required Door Clearances](#)
- [3 Tools Needed](#)
- [4 How to Cut the Hinge to Fit](#)
- [5 Grouted/Slushed-in Frames](#)
- [6 Documents / Resources](#)
 - [6.1 References](#)
- [7 Related Posts](#)

Concealed Continuous Geared Safety



Calculating Required Door Clearances

For Square and Beveled-Edge Doors

Important Warranty Information:

The following actions will void any warranty, expressed or implied: Canadian

- Failure to install the hinge according to the manufacturer's specifications and requirements. (For more information, visit selecthingerequirements.com.)
- Use of fasteners other than those supplied with the hinge.
- Unauthorized field modifications, including alteration or removal of the factory-applied lubricant, altering the original finish or painting the hinge.

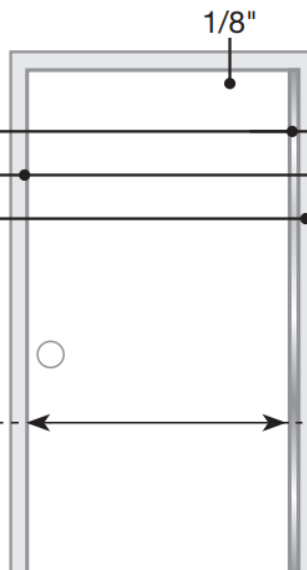
SINGLE DOOR: Square Edge

Hinge side clearance	13/16"
Latch side clearance	1/8"
Frame variance clearance	1/32"

Total Width Clearance 31/32"

To determine door width:

Subtract the Total Width Clearance from the width of the frame opening.



SINGLE DOOR: Beveled Edge

Hinge side clearance	13/16"
Latch side clearance	1/8"
Frame variance clearance	1/32"
Beveled edge clearance	1/32"

Total Width Clearance 1"

To determine door width:

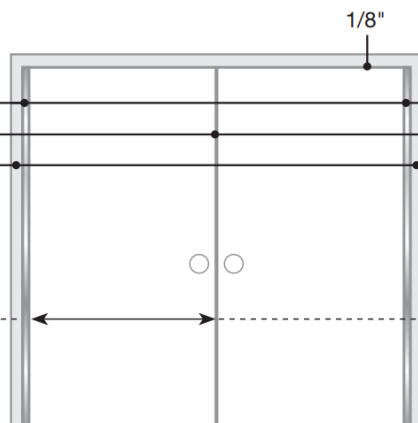
Subtract the Total Width Clearance from the width of the frame opening.

DOUBLE DOORS (PAIR):**Square Edge**

Hinge side clearance	1-5/8" (13/16" x 2)
Latch side clearance	3/16"
Frame variance clearance	1/16" (1/32" x 2)
Total Width Clearance	1-7/8"

To determine door width:

Subtract the Total Width Clearance from the width of the frame opening; divide the result by 2.

**DOUBLE DOORS (PAIR):****Beveled Edge**

Hinge side clearance	1-5/8" (13/16" x 2)
Latch side clearance	3/16"
Frame variance clearance	1/16" (1/32" x 2)
Beveled edge clearance	1/16"
Total Width Clearance	1-15/16"

To determine door width:

Subtract the Total Width Clearance from the width of the frame opening; divide the result by 2.

NOTE: For double-door entrances with a mullion between the pair of doors, calculate each door width using the Single Door clearances.

For double-door entrances with a mullion behind the pair of doors, calculate each door width using the Double Doors clearances.

Tools Needed

- Metal-cutting saw
- Tape measure
- #13 or 3/16" drill bit
- 5/32" drill bit (wood frames/doors)
- #3 Phillips drive
- Shims

Parts Supplied

- #12-24 thread-forming (TF) 410 SS Phillips undercut flathead screws

Optional Parts

- #12 410 SS Phillips undercut flathead wood screws
- #12-24 self-drilling, thread-forming (SDTF) 410 SS Phillips undercut flathead screws
- Protective gloves are recommended

How to Cut the Hinge to Fit

A. Keep the hinge in the "door closed" position (Fig. 1).

B. Determine whether this will be a righthand or left-hand installation.

IMPORTANT: Cut only one end of the hinge. The cut end will be installed at the bottom.

Keep the original templated six-hole pattern at the top end of the hinge.

C. Using a metal-cutting saw, begin the cut through the gear cap first.

NOTE: DO NOT cut through a set screw bearing.

D. Reinstall any set screw bearing that may have been cut off.

A. Prepare Frame

1. Shim hinges to 1/8" below the header to allow for door clearance.
2. Hold the hinge in the "door open" position (Fig. 2), making sure the frame leaf alignment is tight against the

frame face.

3. Mark (or center punch) hole locations.

NOTE: TF screws and wood screws require pilot holes at marked locations. SDTF screws do not require pilot holes.

4. If using SDTF screws, go to Step 5. If using TF or wood screws, drill holes at marked locations. DO NOT attach hinge to the frame at this time.

■ Metal frame: Use #13 (.185") bit or 3/16" (.188") bit

■ Wood frame: Use 5/32" (.156") bit

B. Attach Door to Hinge

5. Align the door leaf alignment flange along the full length of the door edge (even if the door is slightly warped).

IMPORTANT: Top end of the hinge must be flush with the top of the door.

6. Mark (or center punch) holes. If using SDTF screws, go to Step 7. If using TF or wood screws, drill holes at marked locations.

■ Metal door: Use #13 (.185") bit or 3/16" (.188") bit

■ Wood door: Use 5/32" (.156") bit

7. Fasten door leaf to door using #3 Phillips drive and fasteners provided.

C. Attach Door to Frame

8. Position the door at 90 degrees to the frame. Shim the door to the proper height so the door aligns with the top screw holes.
9. Install two screws at the top of the hinge. Remove the shim and align the remaining holes. Install screws in the middle and bottom two holes.
10. Check the door for proper swing and clearance before installing the remaining screws.

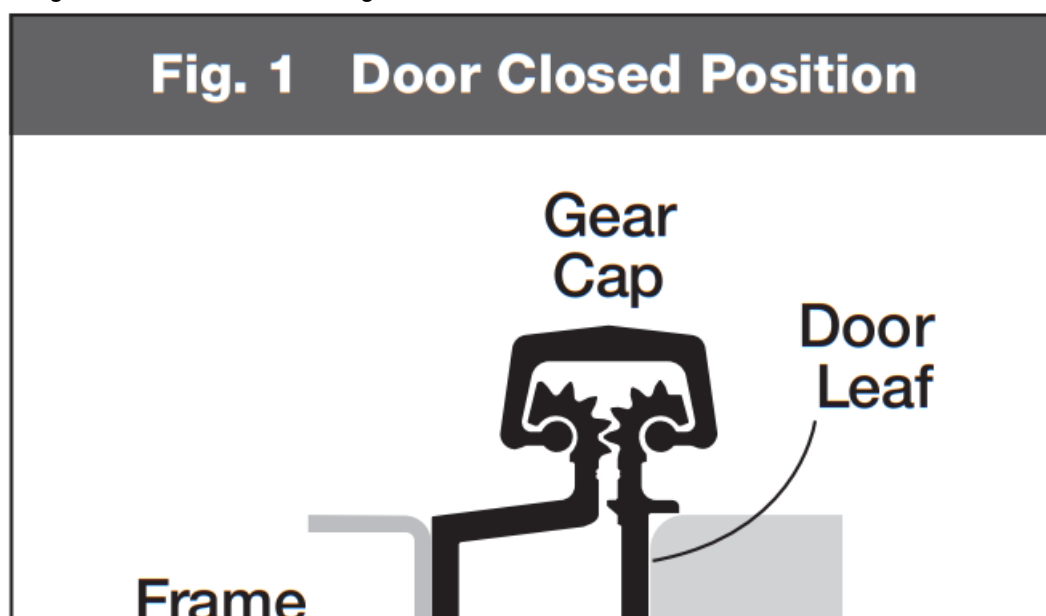
Reinforcing & Rivnuts®

No hinge reinforcement is necessary except on extremely high-frequency, extremely heavy or extra-wide doors. Rivnuts are recommended for use in the frame when the door exceeds 450 lb. (max. 600 lb.).

NOTE: Only SELECT steel Rivnuts are to be used with fire-rated SELECT hinges.

Grouted/Slushed-in Frames

For ease of installation, it is recommended some sort of mudguard be installed behind the frame. Do not use self-drilling, thread-forming (SDTF) screws to drill into grouted frames. If mudguards have not been used, carefully drill pilot holes through the frame and remove grout for screw clearance. Do not oversize holes in the frame.



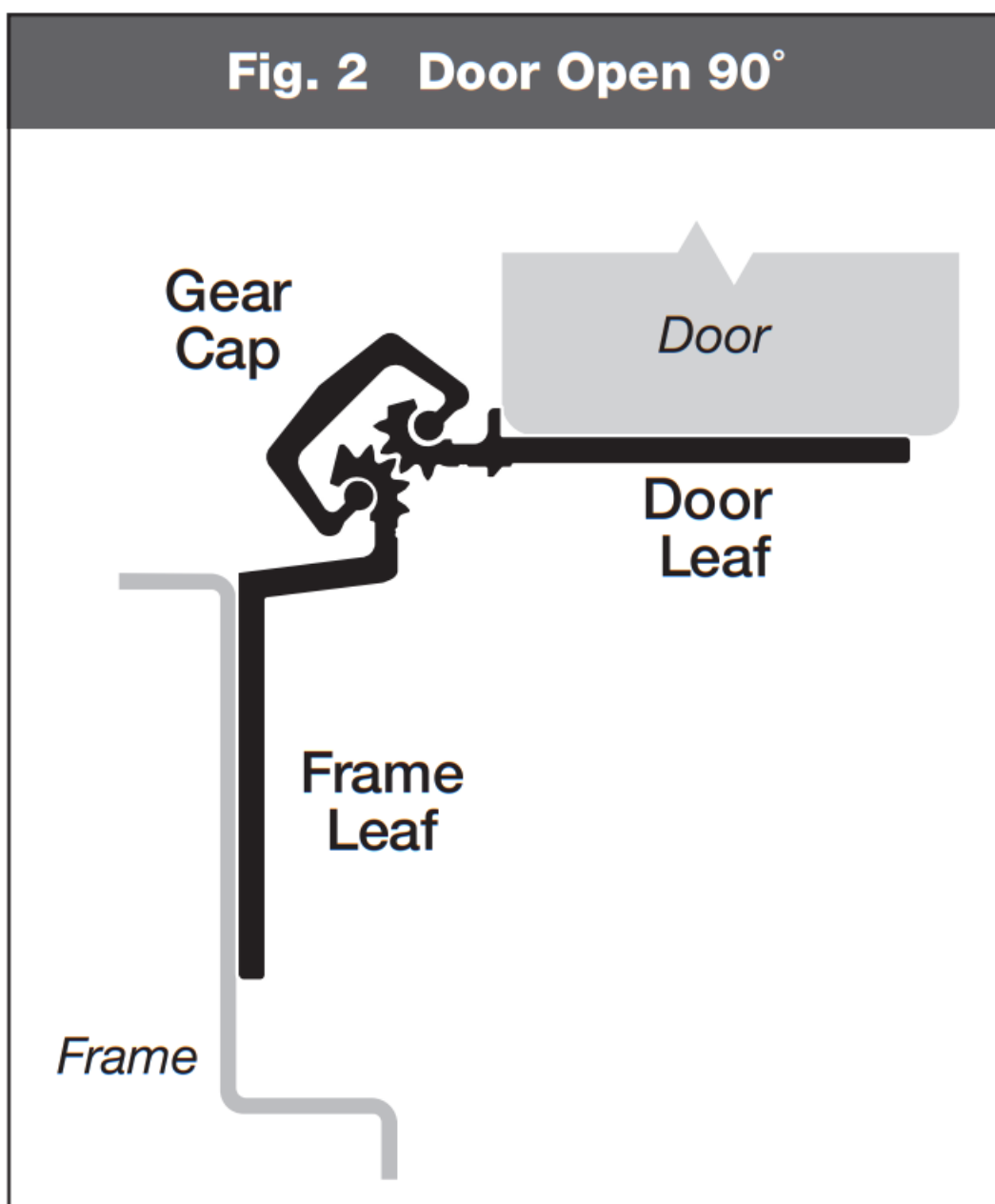
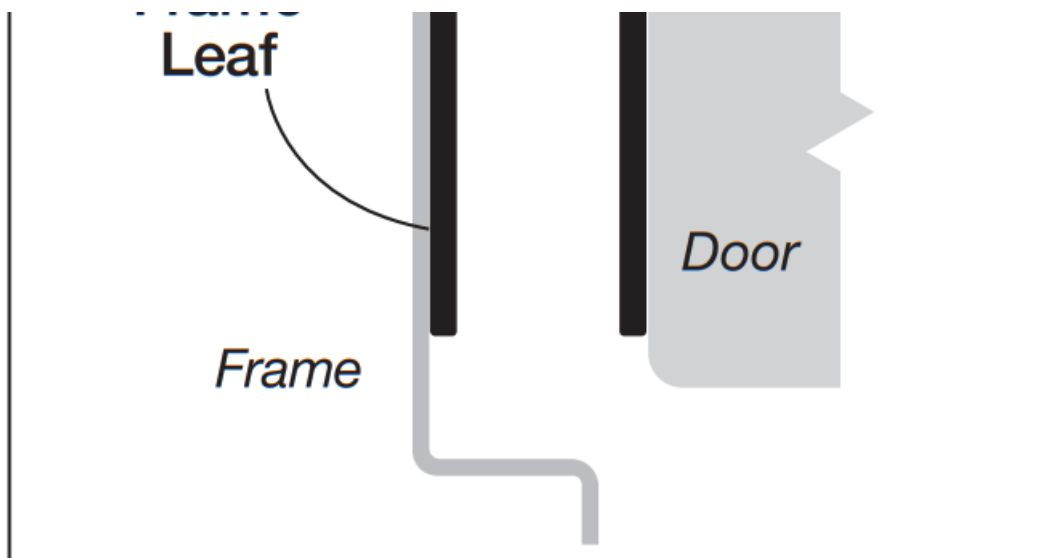
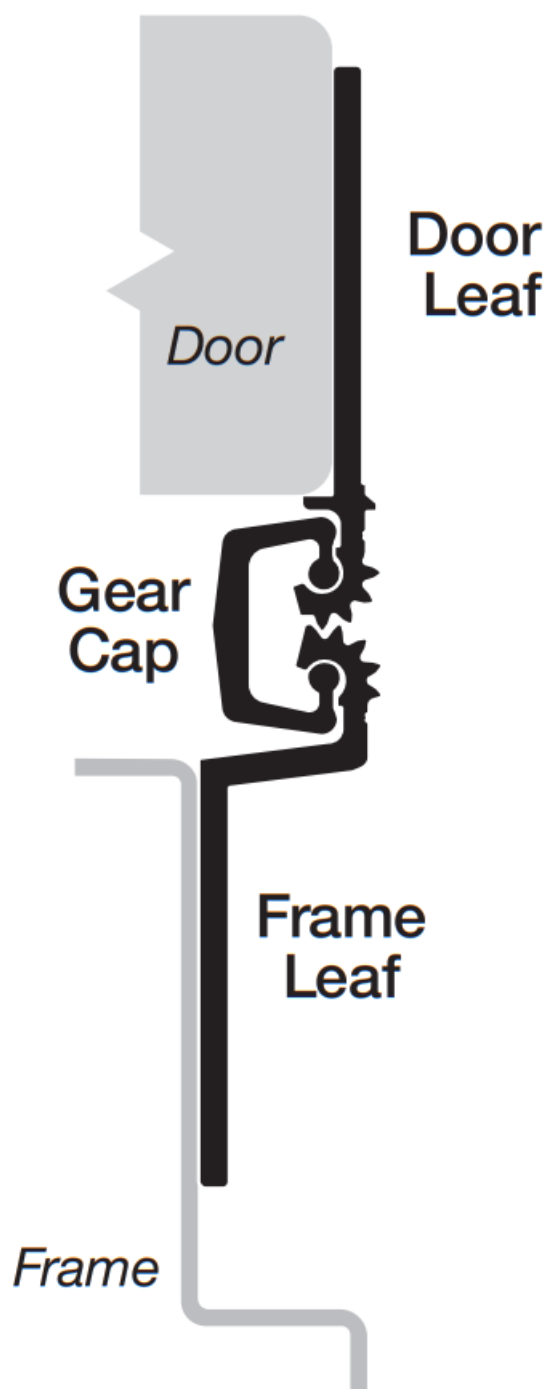


Fig. 3 Door Open 180°



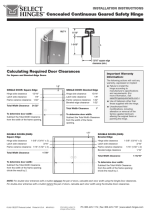
**SELECT
HINGES™**

Ph: 800-423-1174

Fax: 800-423-7107

www.select-hinges.com

© 2021 SELECT Products Limited Printed in the U.S.A. #IN-070121



[SELECT HINGES Concealed Continuous Geared Safety Hinge](#) [pdf] Instruction Manual
Concealed Continuous Geared Safety Hinge, Concealed Continuous Hinge, Geared Safety Hinge, Safety Hinge, Concealed Hinge, Hinge

References

- [🌐 Warranties & Ratings - SELECT Hinges](#)