

CUBE-BTX-1000 Segway Cube Expansion Battery



CUBE-BTX-1000 Segway Cube Expansion Battery User Manual

[Home](#) » [Segway](#) » CUBE-BTX-1000 Segway Cube Expansion Battery User Manual 

Contents

- [1 CUBE-BTX-1000 Segway Cube Expansion Battery](#)
- [2 Product Overview](#)
- [3 Product Usage Instructions](#)
- [4 Safety Instructions](#)
- [5 Packing List](#)
- [6 Product Overview](#)
- [7 Specifications](#)
- [8 Battery Expansion](#)
- [9 Trademark and Legal Statement](#)
- [10 Legal Statement](#)
- [11 FAQ](#)
- [12 Documents / Resources](#)
 - [12.1 References](#)
- [13 Related Posts](#)

SEGWAY

CUBE-BTX-1000 Segway Cube Expansion Battery



Specifications

- **Product:** Segway Cube Expansion Battery
- **Battery Management System:** Included

Product Overview

The Segway Cube Expansion Battery is designed to provide additional power capacity for your Segway device. It consists of a battery pack, inverter, and base for secure installation.

Product Usage Instructions

Battery Expansion

1. Loosen the four screws with the (7/64") 3 mm Allen Wrench. **Do not use an electric tool to loosen screws.**
2. Separate the inverter and the base.
3. Place the battery pack on the base and align it as illustrated.
4. Tighten the four screws securely. **Do not use an electric tool to tighten screws.**
5. Place the inverter on the battery pack, align it correctly, and tighten the four screws securely.

Trademark and Legal Statement

Segway and Rider Design are trademarks of Segway Inc.; Other trademarks and trade names are those of their respective owners. Please read the manual thoroughly before using the Segway Cube Expansion Battery to ensure safe and proper operation.

Legal Statement

1. Read the user manual carefully before using the product to avoid personal injuries and property damage.
2. By using the product, you accept all terms and responsibilities outlined in the manual.
3. Only allow individuals who understand the proper usage and safety precautions to use the product.
4. Inspect the product upon receiving to ensure all accessories are intact and complete.
5. Properly use and maintain the battery to avoid performance degradation not covered under warranty.

Safety Instructions

IMPORTANT SAFETY INSTRUCTIONS

- **WARNING** – When using this product, basic precautions should always be followed, including the following:
 - Read all the instructions before using the product.
 - To reduce the risk of injury, close supervision is necessary when the product is used near children.
 - Do not put fingers or hands into the product.
 - Use of an attachment not recommended or sold by power pack manufacturer may result in a risk of fire, electric shock, or injury to persons.
 - To reduce risk of damage to the electric plug and cord, pull the plug rather than the cord when disconnecting the power pack.
 - Do not use a battery pack or appliance that is damaged or modified. Damaged or modified batteries may exhibit unpredictable behavior resulting in fire, explosion or risk of injury.
 - Do not operate the power pack with a damaged cord or plug, or a damaged output cable.
 - Do not disassemble the power pack, take it to a qualified service person when service or repair is required. Incorrect reassembly may result in a risk of fire or electric shock.
 - To reduce the risk of electric shock, unplug the power pack from the outlet before attempting any instructed servicing.
 - When charging the internal battery, work in a well ventilated area and do not restrict ventilation in any way.
 - Under abusive conditions, liquid may be ejected from the battery; avoid contact. If contact accidentally occurs, flush with water. If liquid contacts eyes, additionally seek medical help. Liquid ejected from the battery may cause irritation or burns.
 - Do not expose a power pack to fire or excessive temperature. Exposure to fire or temperature above 265°F (130°C) may cause explosion.
 - Have servicing performed by a qualified repair person using only identical replacement parts. This will ensure that the safety of the product is maintained.
 - Do not expose the product to sources of ignition or high temperatures, such as high heat vehicles or direct sunlight.
 - Keep the product dry and do not immerse it in water or subject it to moisture. Do not use the product in rainy or humid environments.
 - Avoid using the product in a strong static/magnetic field environment.
 - When using the product, please follow the operating ambient temperature specified in the user manual. If the temperature is too high, it may cause a fire or explosion; if the temperature is too low, it may seriously degrade the performance of the product or stop the product from working.
 - When storing the product for a long time, place it in a dry and ventilated place.
 - Avoid obstructing the fan or placing the product in an unventilated or dusty area.
 - Do not disassemble the product or pierce the product with sharp objects.

- Avoid impact, falling or violent vibration. If a serious impact occurs, please turn off the power and stop using the product immediately.
- Avoid using wires or other metal objects that may cause a short circuit.
- Do not use damaged cords, plugs or output cables to connect this product to avoid electric shock.
- Do not use unofficial components or accessories. If you need to replace any component or accessory, consult the official Segway channel.
- Do not stack heavy objects on the product.
- Do not place the product on an unstable surface to prevent the product from tipping over or falling.
- Ensure that the product is kept out of the reach of children and pets.
- This product is not recommended for powering medical emergency equipment related to personal safety, including medical grade ventilators and artificial lungs. If you need to power this product, follow your doctor's instructions and consult the manufacturer. If used for general medical equipment, make sure the power supply is in proper condition.
- When using this product, the power supply generates electromagnetic fields that may interfere with the proper operation of medical implants or personal medical devices such as pacemakers, cochlear implants, hearing aids, defibrillators, etc. If these devices are being used, please contact the manufacturer for restrictions on the use of these devices to ensure that medical implants are kept at a safe distance from this product during use.
- Risk of Electric Shock. Never use a power pack to supply power tools to cut or access to live parts or live wirings, or materials that may contain live parts or live wirings inside, such as building walls, etc.

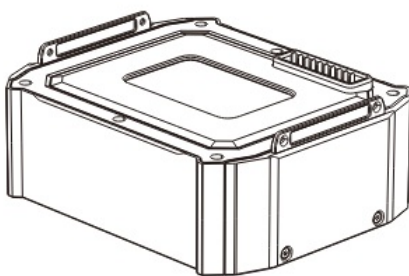
SAVE THESE INSTRUCTIONS

Battery Disposal Guidelines

- When disposing of the battery, make sure that it is fully discharged and place it in the designated battery recycling bin.
- The battery of this product contains chemical substances and is strictly prohibited to be disposed of in the general trash. Please follow local laws and regulations for battery recycling and disposal.
- If the battery cannot be fully discharged due to product failure, please do not dispose of the battery directly in the battery recycling bin. Please contact a professional battery recycling company for further disposal.

We take your safety and the protection of our products very seriously. If you have any questions or suggestions, please contact Segway Customer Service.

Packing List



Segway Cube Expansion Battery x 1



User Manual x 1



Warranty Policy x 1

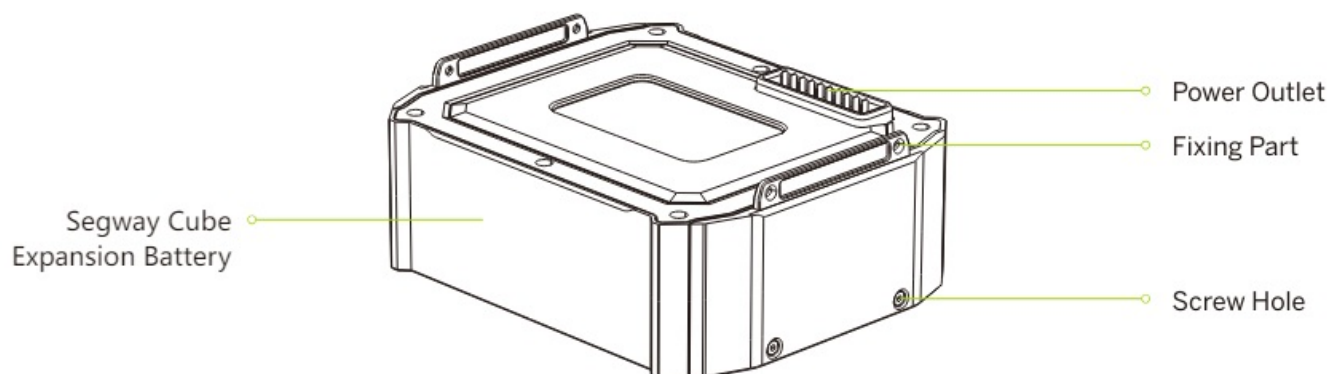


M5 Screw x 4



(7/64") 3 mm
Allen Wrench x 1

Product Overview

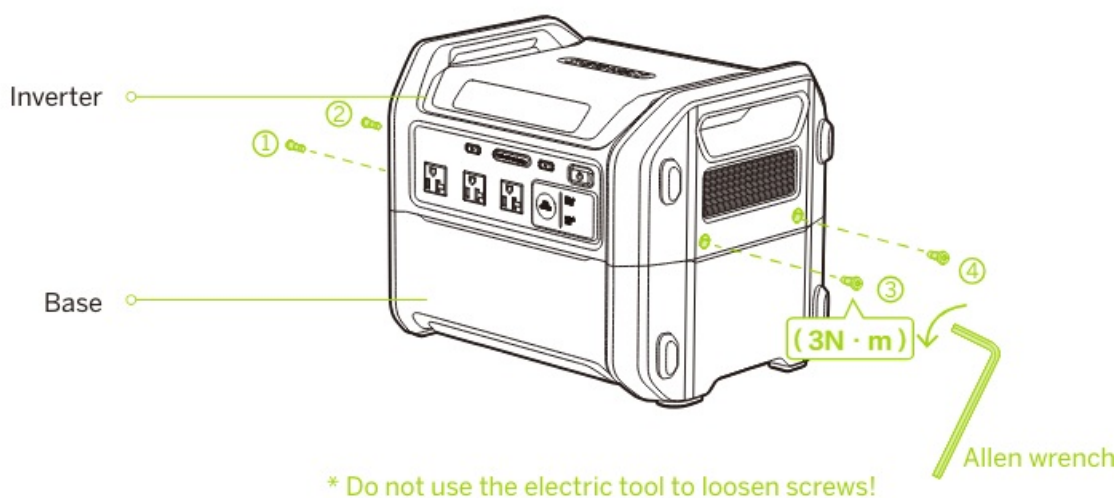


Specifications

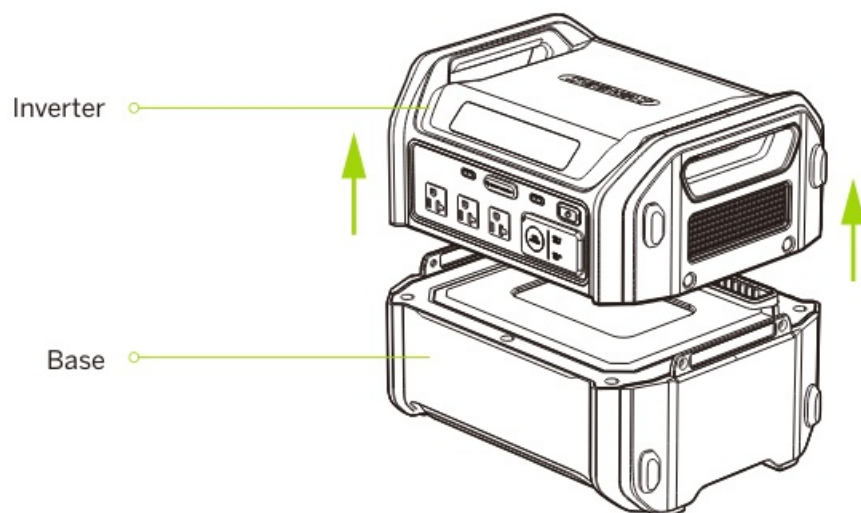
Product	Product Name	Segway Cube Expansion Battery
	Model	CUBE-BTX-1000
	L × W × H	13.7 × 11.3 × 5.3 in (348 × 289 × 135 mm)
	Net Weight	21.8 lbs (9.9 kg)
	Battery Type	LFP (LiFePO ₄) Battery
	Nominal Capacity	20 Ah
	Nominal Energy	1024 Wh
	Nominal Voltage	51.2 V _{DC}
	Max. Charging Voltage	57.6 V _{DC}
	Inverter Model	CUBE-IV-2200
	Discharge Temperature	14°F~113°F (-10°C~45°C)
	Charge Temperature	41°F~113°F (5°C~45°C)
	IP Rating	IP56
	Battery Management System	Protection against over temperature, over current, over voltage.

Battery Expansion

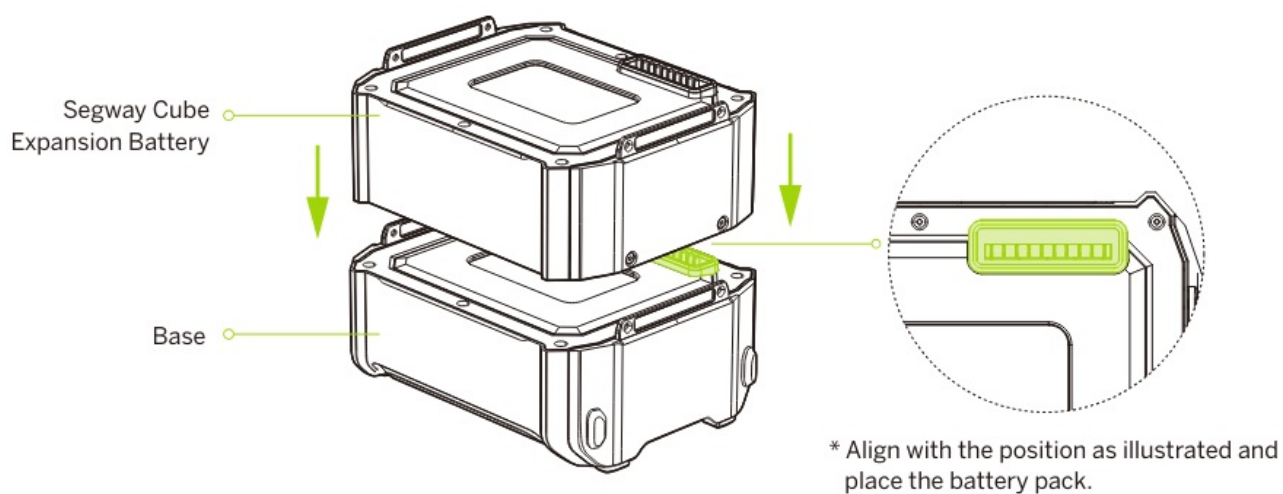
1. Loosen the four screws with the (7/64") 3 mm Allen Wrench.



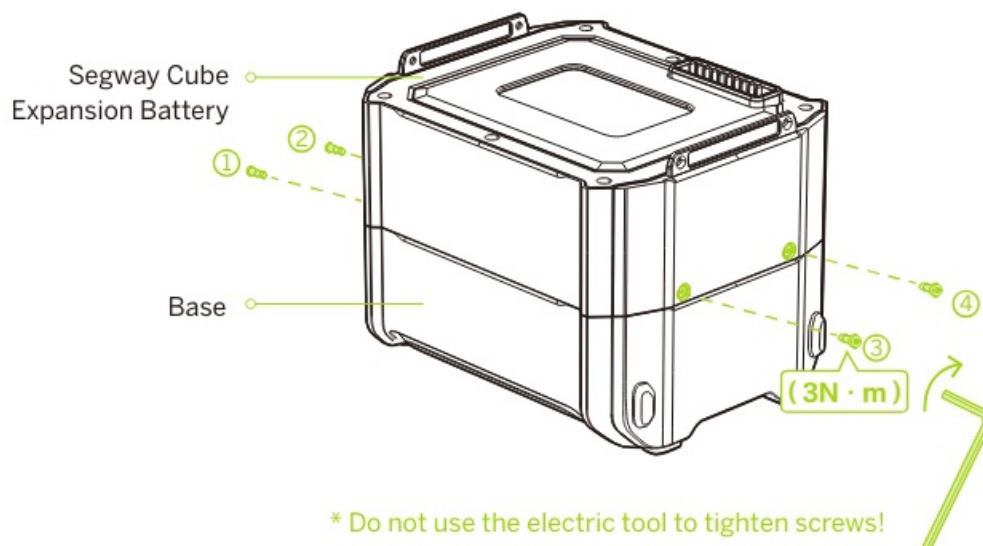
2. Separate the inverter and the base.



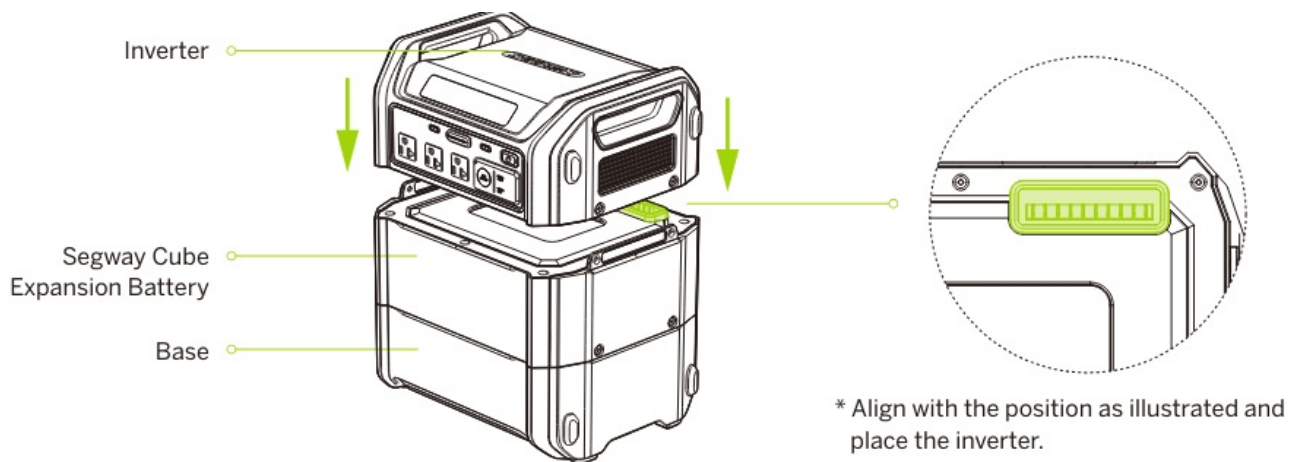
3. Place the battery pack on the base.



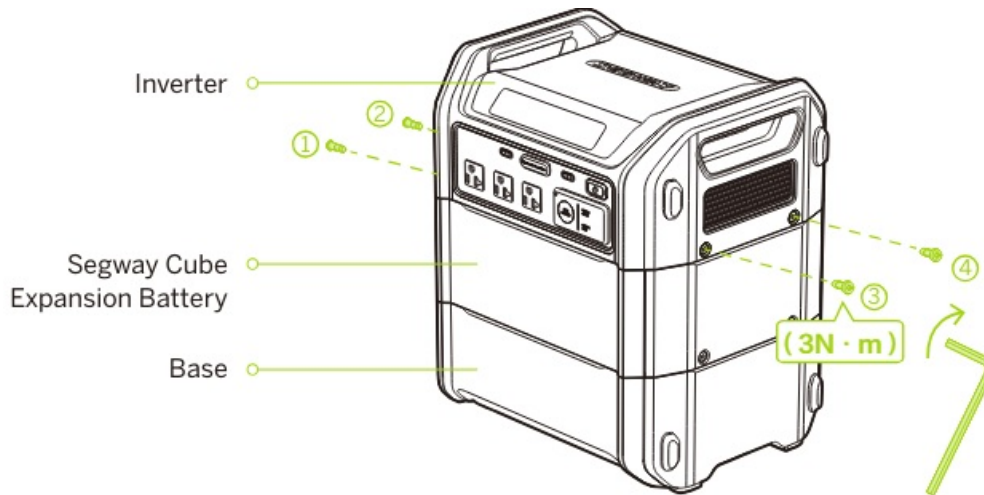
4. Tighten the four screws.



5. Place the inverter on the battery pack.



6. Tighten the four screws.



* Do not use the electric tool to tighten screws!

Trademark and Legal Statement

- Segway and Rider Design are trademarks of Segway Inc.; Other trademarks and trade names are those of their respective owners.
- Due to the constant improvement of products, this manual and the actual products may be slightly different in color, appearance, etc. Actual products shall prevail when there is a discrepancy between the actual products and the manual.

©2023 Ninebot (Beijing) Technology Co., Ltd. All rights reserved.

Legal Statement

1. Before using the Segway Cube Expansion Battery ("Product"), please carefully read the user manual to ensure proper usage after full comprehension. After reading, please keep the user manual safe for future reference. Failure to operate this product correctly may result in severe personal injuries to yourself or others, as well as product damage and property loss.
2. By using the Product, it is deemed that you fully understand, acknowledge, and accept all the terms and contents of this document. The user undertakes responsibility for their actions and all consequences arising from the use of the Product. Segway shall not be liable for any claim, liability, or loss related to such consequences if it is due to the user's assumption of risk.
3. Please do not allow individuals who have not carefully read this manual or are unfamiliar with the proper usage

and safety precautions of the Product to use it.

4. Upon receiving the Product, please immediately inspect whether the product and its accessories are intact and complete. All accessories must be used as required by the instruction manual.
5. **Warning:** Any battery performance degradation or inability to function properly caused by the user's failure to use and maintain the battery properly is not covered under the Limited Warranty.
6. To the extent permitted by law, Segway reserves the right to provide the final interpretation and explanation of this statement.

This Legal Statement shall be governed by the laws of the state where your Product is installed, except to the extent inconsistent with or pre-empted by federal law. Segway shall not be liable for any claims, liabilities, or losses resulting from the consumer's violation of the above statement.


You may choose to accept the above terms and use the product accordingly, or proceed with the return process according to the Limited Warranty. When returning the Product, please ensure the Product and packaging are intact to avoid affecting resale.

- If you intend to resell or gift the Product, please remember to include this legal statement as it is an integral part of the Product.
- If you have any questions or need assistance, Segway is pleased to be at your service.
- Once again, we thank you for choosing and trusting our Product.

FAQ

- **Q: Can I use an electric tool to tighten or loosen the screws?**
 - A: It is recommended not to use an electric tool for tightening or loosening the screws to prevent damage to the components.
- **Q: What should I do if I notice any performance issues with the battery?**
 - A: If you experience any performance degradation or issues with the battery, ensure you have followed proper usage and maintenance guidelines. Contact Segway Customer Service for further assistance.

Documents / Resources

 SEGWAY Segway Cube Expansion Battery User Manual	SEGWAY CUBE-BTX-1000 Segway Cube Expansion Battery [pdf] User Manual CUBE-BTX-1000 Segway Cube Expansion Battery, CUBE-BTX-1000, Segway Cube Expansion Battery, Cube Expansion Battery, Expansion Battery, Battery
---	---

References

- [User Manual](#)

This website is an independent publication and is neither affiliated with nor endorsed by any of the trademark owners. The "Bluetooth®" word mark and logos are registered trademarks owned by Bluetooth SIG, Inc. The "Wi-Fi®" word mark and logos are registered trademarks owned by the Wi-Fi Alliance. Any use of these marks on this website does not imply any affiliation with or endorsement.