



seenDa XL-20 Computer Monitor Lamp Screen Monitor Light Bar with Wireless Remote User Manual

[Home](#) » [SeenDa](#) » [seenDa XL-20 Computer Monitor Lamp Screen Monitor Light Bar with Wireless Remote User Manual](#) 

Contents

- [1 seenDa XL-20 Computer Monitor Lamp Screen Monitor Light Bar with Wireless Remote](#)
- [2 Instruction](#)
- [3 Warranty and After-Sales Services](#)
- [4 Troubleshooting](#)
 - [4.1 Problem / Solution](#)
- [5 IMPORTANT SAFETY INSTRUCTIONS](#)
- [6 What's In the Box](#)
- [7 Feature](#)
- [8 Charging for controller](#)
- [9 Controller pairing](#)
- [10 How to Use](#)
- [11 FCC Statement](#)
- [12 Documents / Resources](#)
- [13 Related Posts](#)

The logo for seenDa, featuring the brand name in a white, lowercase, sans-serif font with a registered trademark symbol, set against a solid black rectangular background.

seenDa XL-20 Computer Monitor Lamp Screen Monitor Light Bar with Wireless Remote



Instruction

Please read this manual carefully before using it and keep this in a safe place for future reference.

Warranty and After-Sales Services

30-day unconditional money-back guarantee. If you are not completely satisfied with this product for any reason, Seenda will gladly refund your purchase price within 30 days of purchase (from the date of retail purchase). If a hardware defect arises (not due to personal alterations or attempted repairs) and a valid claim is received within the Warranty Period

Exchange the product with a product that is new or which has been manufactured from serviceable used parts and is at least functionally equivalent to the original product. Refund the purchase price of the product. Seenda may request that you send the product back to our address for the replacement/refund. The location will change according to your area of residence. Please contact our customer service for confirmation. Seenda WILL

NOT cover the shipping cost. Seenda only offers warranty service for our official Amazon store and distributors. We need the order information, for example, the Amazon order number to verify your order.

Troubleshooting

This chapter summarizes the most common problems you could encounter with the appliance. If you are unable to solve the problem with the information below, contact customer-service@seenda.com

Problem / Solution

The light cannot be turned on.

Ensure the lamp power supply is on. Make sure that the USB port input voltage indicated on the appliance is 5V

DC 2A. Make sure the remote control has power.

The remote does not work and no indicator light is on.

Make sure the remote control has power.

The remote cannot control the lights.

Make sure the light is in control range. Please ensure the controller still has power.

The lamp flashes.

Perhaps the lamp is not suitable for the voltage to which it is connected. Make sure that the voltage indicated on the appliance corresponds to the local voltage.

IMPORTANT SAFETY INSTRUCTIONS

Thank you for choosing Seenda@. Before use, carefully read the following instructions. **WARNING-** To reduce the risk of FIRE, ELECTRIC SHOCK, OR INJURY TO PERSONS:

1. This appliance is for indoor use only.
2. Do not look directly at the lighted lamp.
3. Use only the supplied USB power cable and connect only to USB port power (5V DC, 2A). Otherwise, the lamp will fail to work normally or result in a fire hazard.
4. In order to prevent any damage to the lamp, do not hang or place any objects on the lamp.
5. Route the USB power cable so as to avoid it from being pinched by items placed upon it or against it.
6. Water and electricity are a dangerous combination. Do not use this appliance in wet surroundings (e.g. in the bathroom or near a shower or swimming pool).
7. If the appliance, power supply cord or cord has been damaged in any way, liquid has spilled or objects have fallen into the appliance, the appliance has been exposed to rain or moisture, does not operate normally, or has been dropped or damaged, it should not be operated.
8. Protect the power cord from being walked on or pinched, particularly at plugs, outlet, and point where they exit from the lamp.

SAVE THESE INSTRUCTIONS

What's In the Box



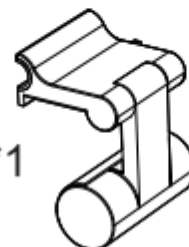
LED Lamp*1



Remote control*1



USB power cable*1



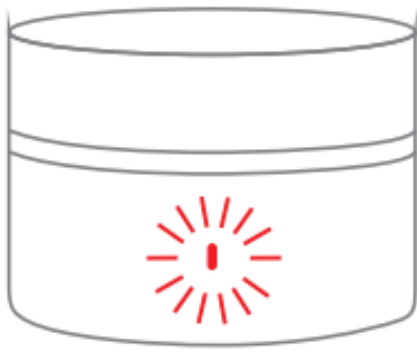
Clip*1

Feature

Product	Monitor Light
No.	XL-20
Wattage	Max 8W
Input	DC5V-2A (USB-Type C)
Color Temperatures	3000K-6000K
CRI (Ra)	>95Ra
Controller battery type	Lithium battery 700mAh
Controller charging time	1.5 hours
Controller use time	720 hours
Controller distance	10 meters

Charging for controller

- Charging takes approx.90 min. Charge the product before first use and when the red indicator lights up.
- Please use USB port power (5V DC, 21>.) only.

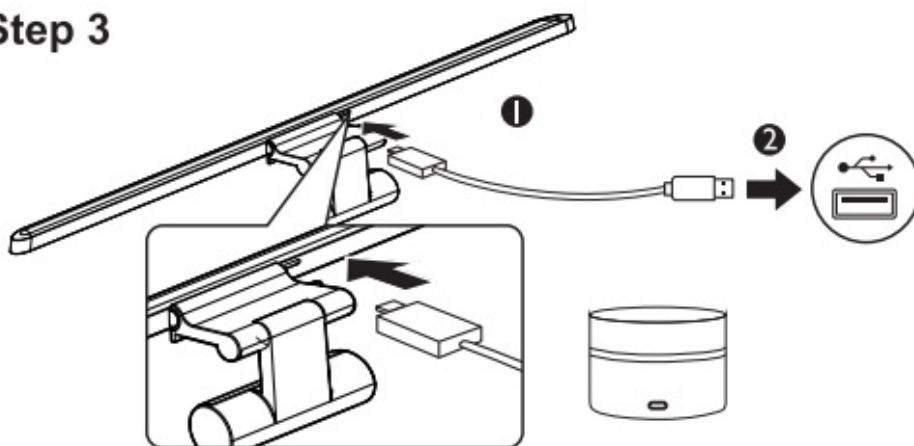


- The red indicator light will be on in the charging state.
- After being fully charged, the Ole green indicator light will be on.

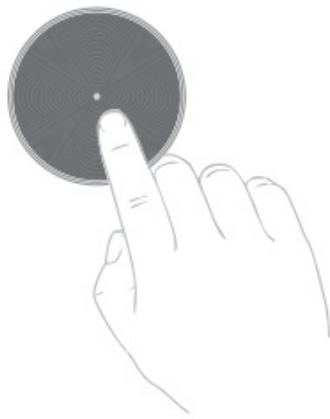
Controller pairing

- Under normal circumstances, we have completed the controller pairing, the user does not need to perform the following operations
- Confirm that the power of the controller is normal (the indicator light is not red);
- Plug-In the power to the lamp;
- Press the controller twice within 10 seconds after the lamp is powered on. The lamp flashes to indicate a successful pairing.

Step 3



Using the lamp



Controller Operation



To turn on/off the lamp, press the controller for about 2s



When the lamp is on, press the controller to adjust color temperature Levels



Turn the knob clockwise to increase brightness, or cOunter-clock- wise to decrease it.

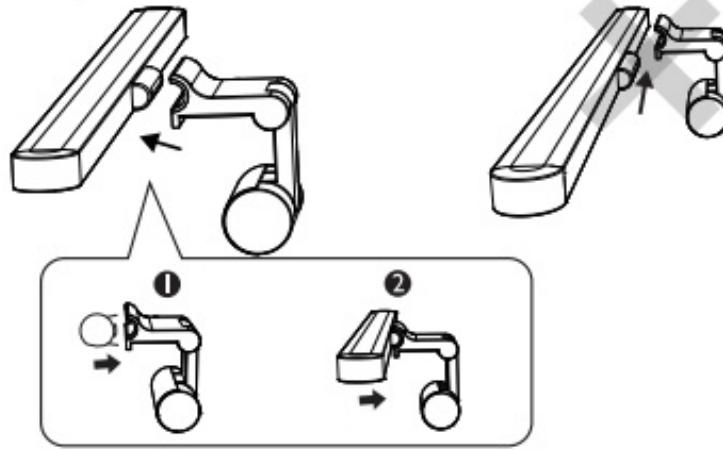


Press and turn the knob remote at the same time to choose any color temperature you want. (3000K-6000K)

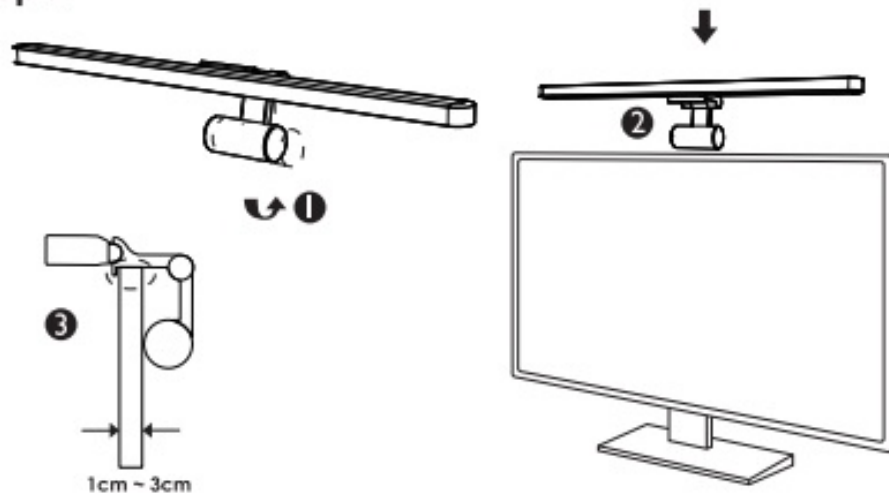
How to Use

Installation

Step 1



Step 2



FCC Statement

This device complies with part 15 of the FCC rules. Operation is subject to the following two conditions:

1. This device may not cause harmful interference, and
 2. This device must accept any interference received, including interference that may cause undesired operation.
- Changes or modifications not expressly approved by the party responsible for compliance could void the user's authority to operate the equipment.

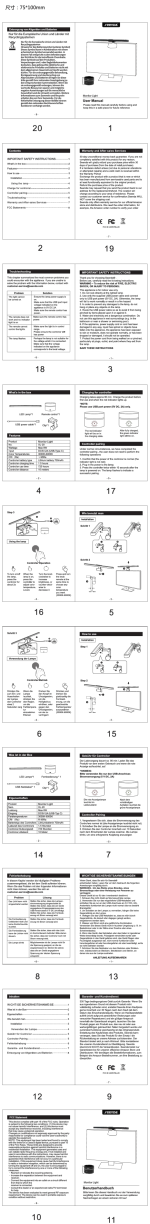
NOTE:

This equipment has been tested and found to comply with the limits for a Class B digital device, pursuant to part 15 of the FCC Rules. These limits are designed to provide reasonable protection against harmful interference in a residential installation. This equipment generates uses and can radiate radio frequency energy and, if not installed and used in accordance with the instructions, may cause harmful interference to radio communications. However, there is no guarantee that interference will not occur in a particular installation. If this equipment does cause harmful interference to radio or television reception, which can be determined by turning the equipment off and on, the user is encouraged to try to correct the interference by one or more of the following.

Measures:

- Reorient or relocate the receiving antenna.
- Increase the separation between the equipment and receiver.
- Connect the equipment into an outlet on a circuit different from that to which the receiver is connected.
- Consult the dealer or an experienced radio/TV technician for help.
- The device has been evaluated to meet general RF exposure requirements. The device can be used in portable exposure conditions without restriction.

Documents / Resources

	<p>seenDa XL-20 Computer Monitor Lamp Screen Monitor Light Bar with Wireless Remote [pdf] User Manual XL-20, XL20, 2AYK7XL-20, 2AYK7XL20, XL-20 Computer Monitor Lamp Screen Monitor Light Bar with Wireless Remote, Computer Monitor Lamp Screen Monitor Light Bar with Wireless Remote</p>
--	--

--	--

Manuals+.