



seenda ICH-66 Charging Station for Multiple Devices User Manual

[Home](#) » [SeenDa](#) » seenda ICH-66 Charging Station for Multiple Devices User Manual 

Contents

- [1 seen by ICH-66 Charging Station for Multiple Devices](#)
- [2 Product Specifications](#)
- [3 Product Usage Instructions](#)
- [4 Features](#)
- [5 Product Specifications](#)
- [6 Cellphone Charging Schematic Diagram](#)
- [7 AirPods Charging Base Assembly Steps](#)
- [8 Apple Watch Charging Stand Assembly Steps](#)
- [9 Package List](#)
- [10 Wireless charging compatible with mobile phone models](#)
- [11 Contact Information](#)
- [12 Documents / Resources](#)
 - [12.1 References](#)
- [13 Related Posts](#)

seenda®

seen by ICH-66 Charging Station for Multiple Devices



Product Specifications

- **Type:** ICH-66
- AirPods and Apple Watch compatible
- **Material:** ABS + PC (Flame retardant)
- **Weight:** 1.32 (lb)
- **Input Voltage:** 100-240 V AC, 50/60 Hz
- **Output Power:** 24 W (5 V, 4.8 A) + (10 W, 7.5 W, 5 W) (varies depending on the mobile phone model)
- **Wireless Charging Distance:** 3-8mm

Product Usage Instructions

AirPods Charging Station

The charging station supports fast wireless charging and multi-port USB charging. It is designed to charge AirPods, Apple Watch, and mobile phones simultaneously.

Assembly Steps for AirPods Charging Stand

1. Connect the charging cable to the charging station.
2. Place the AirPods charging case on the designated spot of the stand.
3. Adjust the angle of the stand to your preference.

Phone Charging Diagram

The charging station provides stable wireless charging power for mobile phones. It supports both fast wireless charging and normal USB charging. The power output varies depending on the mobile phone model.

Apple Watch Charging Station

The charging station is compatible with Apple Watch models and provides normal 5W charging.

Assembly Steps for Apple Watch Charging Stand

1. Connect the charging cable to the charging station.
2. Place the Apple Watch on the designated spot of the stand.
3. Adjust the angle of the stand to your preference.

Note

- Use the original or third-party certified charging cable for safety and efficiency.
- Keep the charging station out of reach of infants and young children.
- Unauthorized disassembly and repair by non-professionals are strictly prohibited.

FAQ

- **Q: What devices are compatible with the wireless charging feature?**

A: The wireless charging is compatible with various mobile phone models.

- **Q: What is the recommended charging cable to use?**

A: It is highly recommended to use the original or third-party certified charging cable for optimal charging performance.

- **Q: Can I charge AirPods and Apple Watch simultaneously?**

A: Yes, the charging station is designed to charge AirPods, Apple Watch, and mobile phones simultaneously.

- **Q: What should I do if there is a problem with the product?**

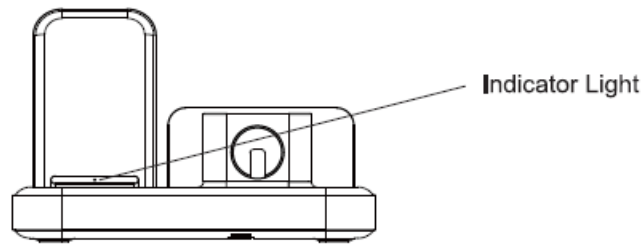
A: If you have any questions or issues, please contact our customer service team at support@seenda.tech. We will do our best to assist you.

Thank you for purchasing this product. Please read this manual carefully before use to get the correct usage and storage method. Hope you have a pleasant shopping experience.

Features

1. Fast wireless charging and Multi-port USB charging, AirPods charging stand and Apple Watch charging stand are multifunctional in one, which can realize wireless phone fast charging and ordinary USB charging at the same time, and charge AirPods and Apple Watch at the same time. The mobile phone model can be intelligently identified, and the wireless charging supports 10W fast charging, 7.5W Apple fast charging, and 5W ordinary charging.
2. Powered by direct AC input power supply provides you with the largest and most stable power supply for wireless charging. working at full power without pressure.
3. Adopting a retractable structure, the charging cables of AirPods and Apple Watch are hidden in the casing, the whole product is more concise, and the desktop will not be messy.
4. The mobile phone wireless charging coil is far away from the heat source to better improve the charging efficiency. It can be charged upright or down, which is convenient and fast.
5. Designed a charging location for AirPods and Apple Watch. AirPods is plug and charge. The base is compatible with new and old AirPods and does not block the screen of Apple Watch.
6. Built-in magnetic isolation sheet for wireless charging increases the magnetic flux of the coil, the conversion rate can reach 80%. The built-in circuit is equipped with multiple protections, over-voltage protection, input over-

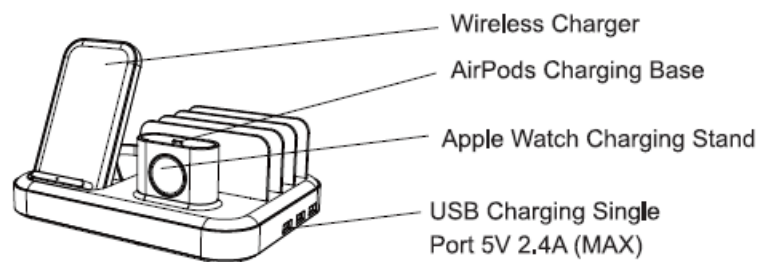
current protection, output over-current protection, anti-ripple, short circuit protection, anti-electromagnetic protection, and anti-static protection, charging is safer.



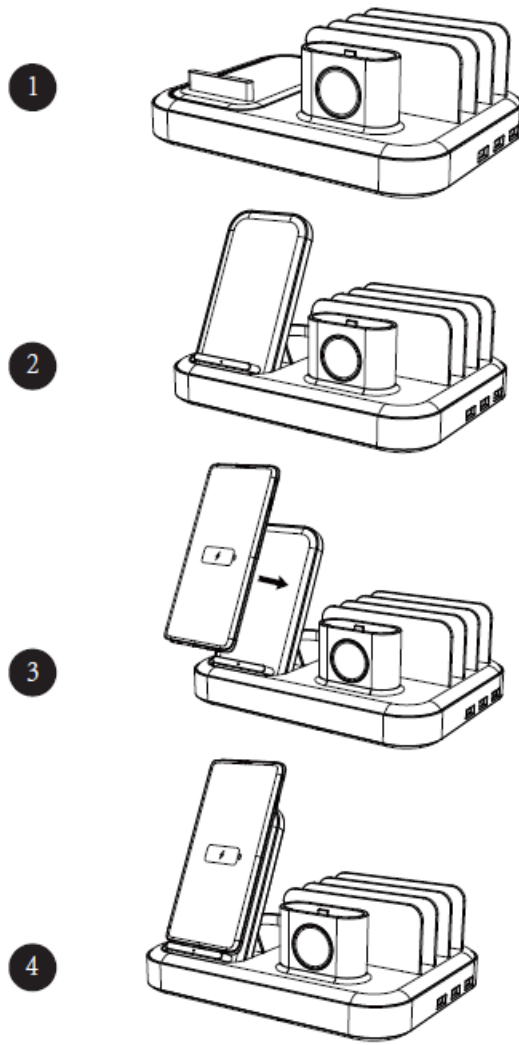
1. When power is on, the red and green indicator lights flash once time in turn, and then turn off.
2. After entering the charging state, the green indicator light is always on, and the indicator light turns off when the device is full charged.
3. When there is a metal foreign object placed in the wireless charging induction area or other errors, the red indicator light flashes 5 times and then turns off, stop working.

Product Specifications

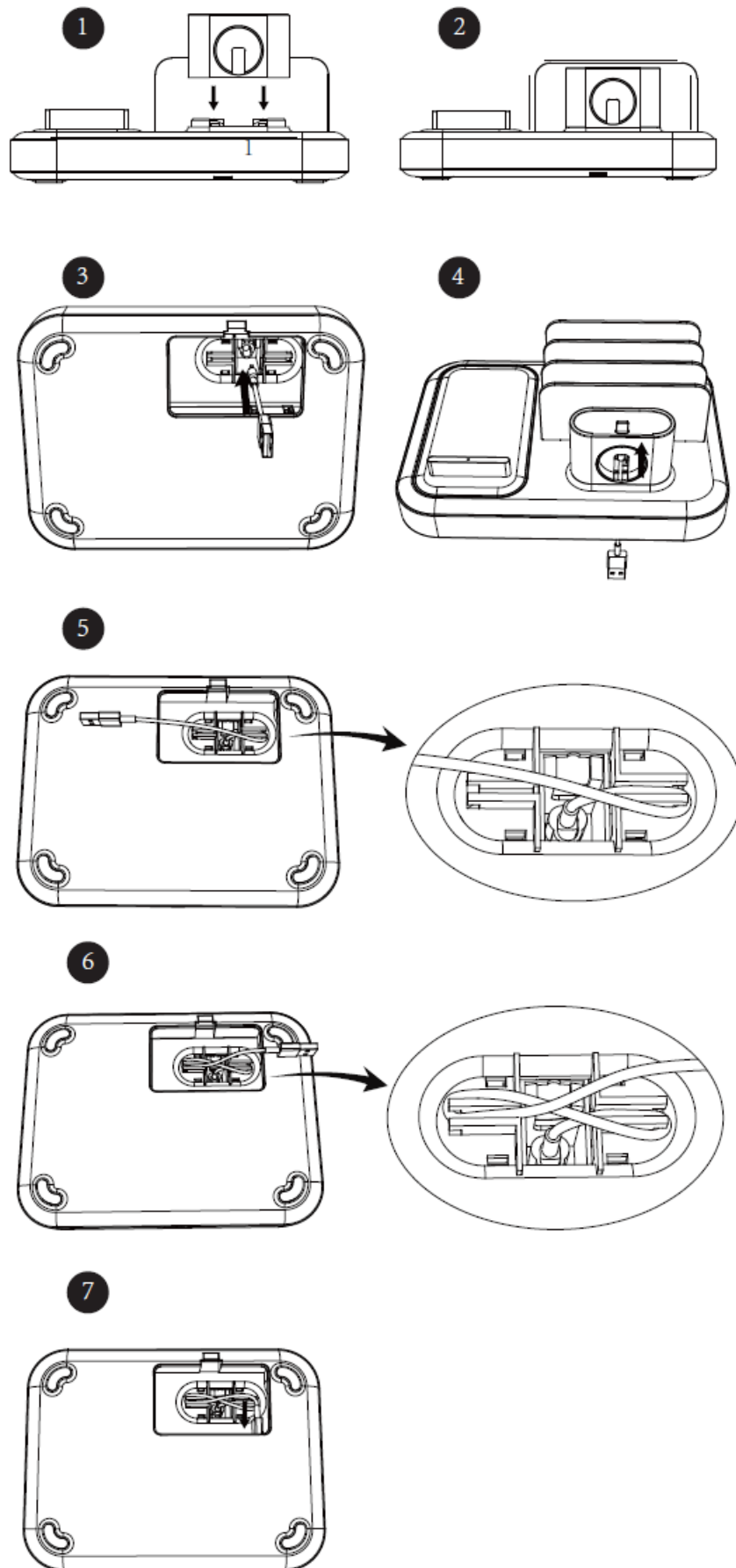
- **Model:** ICH-66
- **Name:** Multi-port USB Wireless Charger Charging Station for Cell Phone, AirPods, Apple Watch
- **Material:** ABS + PC (anti-flame retardant)
- **Weight:** 1.32(lb)
- **Dimensions:** 206*154.5*44.5(mm)
- **Input Voltage:** 100-240V AC 50/60HZ
- **Output Power:** 24W (5V 4.8A) + (10W, 7.5W, 5W) (varies according to different mobile phone models)
- **Wireless Charging Distance:** 3-8mm



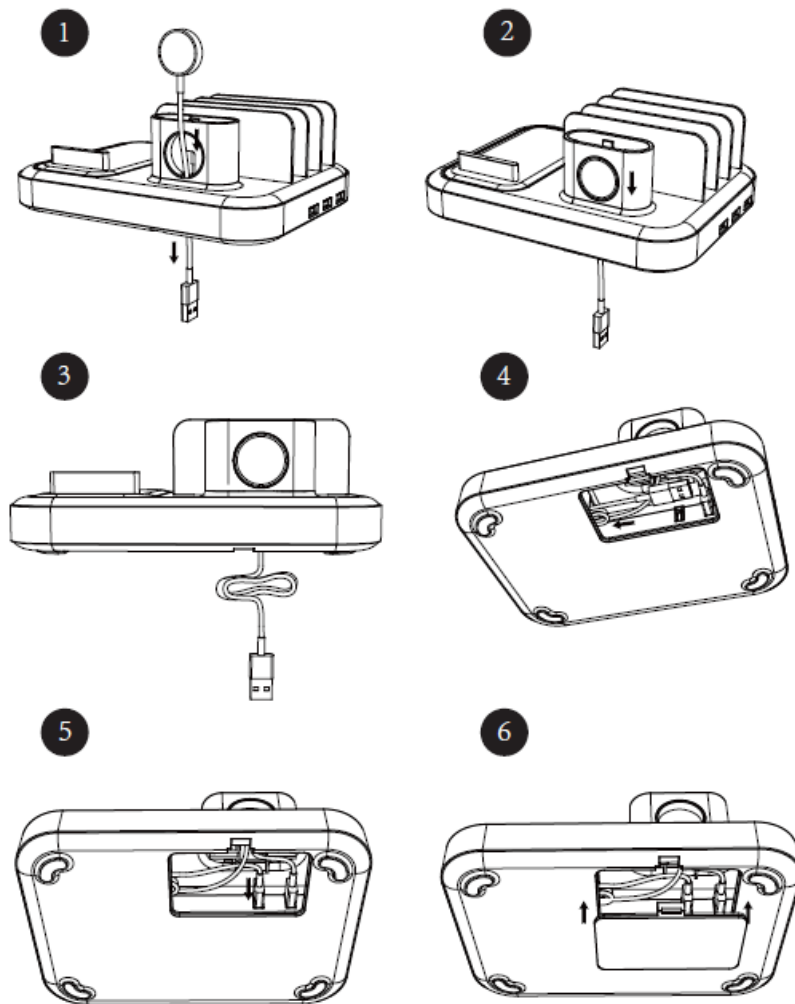
Cellphone Charging Schematic Diagram



AirPods Charging Base Assembly Steps



Apple Watch Charging Stand Assembly Steps



IMPORTANT NOTE

1. Please check whether the charged device is compatible with the product voltage first.
2. Before using the wireless charger, please check whether there is a metal object on the back of the phone.
When there is a metal piece or other metal material on the back of the charged phone, the wireless charger will start up the FOD foreign object detection function and the phone will not be charged normally.
3. To ensure safety and efficiency, it is strongly recommended to use the original charging cable or a third-party certified charging cable to power the device.
4. Only use for indoor and dry environments, avoid using in high temperatures, humidity, and oily environments. It is forbidden to use after seeping liquid or throwing it into a fire. Pay attention to moisture and waterproofing.
5. It is strictly forbidden to place the product in a strong magnetic field environment.
6. Avoid placing it in the reach of infants and children.
7. Non-professionals are not allowed to disassemble and repair without authorization

Package List

- Multi-port USB Charging Station * 1
- Manual * 1
- Power Cable * 1
- USB Charging Cable * 5

Wireless charging compatible with mobile phone models


1. **Apple:** iPhone11/ iPhone11 pro/ iPhone11 pro max/ iPhone x/ iPhone xs/ iPhone xs max/ iPhone XR/ iPhone8 / iPhone 8 Plus
2. **Samsung:** Galaxy S10/Galaxy S10+/Galaxy S9/Galaxy S9+/Galaxy S8/Galaxy S8+/Galaxy S7/Galaxy S7 edge/Galaxy S6/Galaxy S6 edge
3. **Nokia:** Lumia Series 735/820/822/830/920/929/1020/1520
4. **SONY:** Z3VIZ4V
5. **Google:** Nexus 4/Nexus 5/Nexus 6/Nexus 7
6. **LG:** G pro/G2 (US Version) /G3(US Version)
7. **MOTO:** Droid 5
8. **HTC:** One Mini 2/One M8 Eye(Mobile 4G/M3Et) /One E9(E9t Mobile 4G) /Butterfly3(Mobile 4G)/HTC Droid DNA(US Version)/HTC 8X(US Version) /Butterfly(US Version)

Contact Information

Please contact our customer support if you have any questions or suggestions. We do our best to help you.

1. www.seenda.tech
2. support@seenda.tech.

Documents / Resources

	seenda ICH-66 Charging Station for Multiple Devices [pdf] User Manual ICH-66 Charging Station for Multiple Devices, ICH-66, Charging Station for Multiple Devices, Station for Multiple Devices, Multiple Devices, Devices
---	---

References

- [User Manual](#)

[Manuals+](#), [Privacy Policy](#)

This website is an independent publication and is neither affiliated with nor endorsed by any of the trademark owners. The "Bluetooth®" word mark and logos are registered trademarks owned by Bluetooth SIG, Inc. The "Wi-Fi®" word mark and logos are registered trademarks owned by the Wi-Fi Alliance. Any use of these marks on this website does not imply any affiliation with or endorsement.