



## SECURE ServicePlus S27R Series 2 Channel Central Heating and Hot Water Programmer Instruction Manual

[Home](#) » [SECURE](#) » SECURE ServicePlus S27R Series 2 Channel Central Heating and Hot Water Programmer Instruction Manual 



### ServicePlus S27R Series 2 User Operating Instructions Two-Channel Central Heating and Hot Water Programmer



The ServicePlus S27R two-channel programmer gives independent control over hot water and heating with up to 3 ON/OFF settings for each day of the week. It also has a 1-hour manual boost button for the hot water and an advance button for the central heating.

There is also a programming switch allowing permanent selection of OFF/ON/AUTO/ALL DAY.

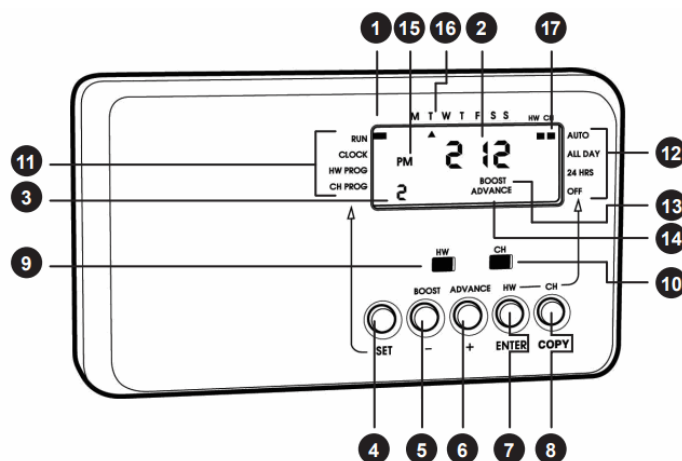
Additionally, the ServicePlus programmer gives an advance warning of the annual boiler safety check due date.

## Contents

- 1 The ServicePlus S27R Programmer
- 2 Fully Pumped or Gravity System
- 3 Manual Overrides
- 4 Program Override Facilities
- 5 Setting Time of Day and Date
- 6 Setting the On and Off Times
- 7 Default Time settings
- 8 General Information
  - 8.1 Battery
- 9 Documents / Resources
- 10 Related Posts

## The ServicePlus S27R Programmer

The simple instructions contained in this user guide are designed to help with the programming and operation of the unit.



- 1 SET indicator
- 2 Time of day
- 3 Switch period symbol
- 4 SET button
- 5 Hot water BOOST or adjust (-) button
- 6 Central Heating ADVANCE or adjust (+) button
- 7 Hot water (HW) or ENTER button
- 8 Central Heating (CH) or COPY button
- 9 Hot water ON indicator

- 10 Central heating ON indicator
- 11 SET positions
- 12 PROGRAMME positions
- 13 BOOST symbol
- 14 ADVANCE symbol
- 15 AM/PM symbol
- 16 Day of the week indicator
- 17 PROGRAMME indicators

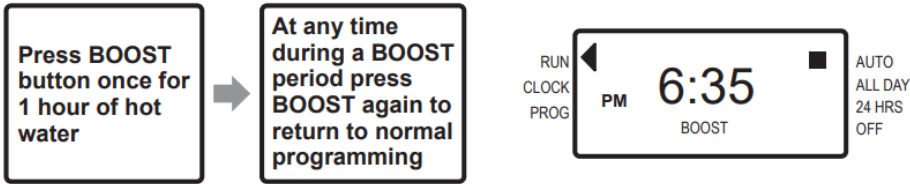
## Fully Pumped or Gravity System

The installer will have set the programmer to suit the installed system. This is normally a Fully Pumped system which will allow independent control of the central heating and hot water, however on an old Gravity system the central heating and hot water are linked so it is not possible to use the central heating independently. This will allow only one common time setting for both hot water and central heating and will become apparent when setting the ON and OFF times as both will be indicated together.

Manual Overrides

BOOST FUNCTION – 1-hour temporary override (HOT WATER ONLY)

The boost facility will allow the user to boost the hot water channel which is currently ‘OFF’ for 1 hour. To indicate the boost being activated BOOST will be shown on the display for the duration of the boost period. The hot water channel ON indicator will also be illuminated.



Advance Function – Brings forward the next on or off operation (CENTRAL HEATING ONLY)

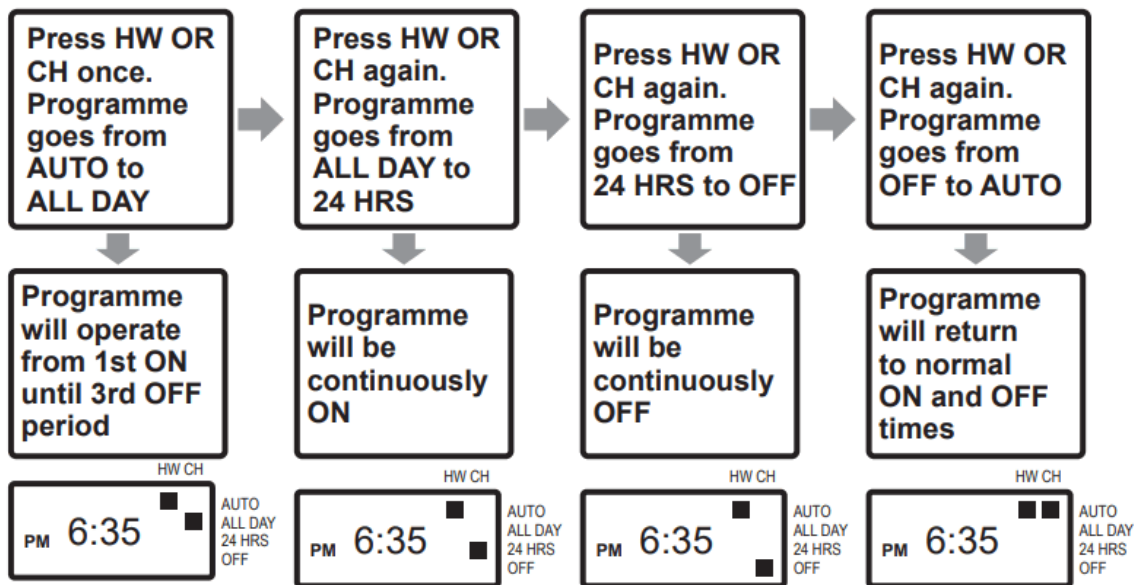
The advanced facility will allow the user to switch the central heating channel ‘ON’ which is currently ‘OFF’ or switch the central heating channel ‘OFF’ which is currently ‘ON’. To indicate the advance feature being activated ADVANCE will be shown on the display until the next program switching time. The central heating ON indicator will also be illuminated.

Program Override Facilities

With the ServicePlus S27R programmer operating in the normal running mode, it is possible to alter the functionality of the program on each individual channel by means of the CH and HW buttons. The options include;

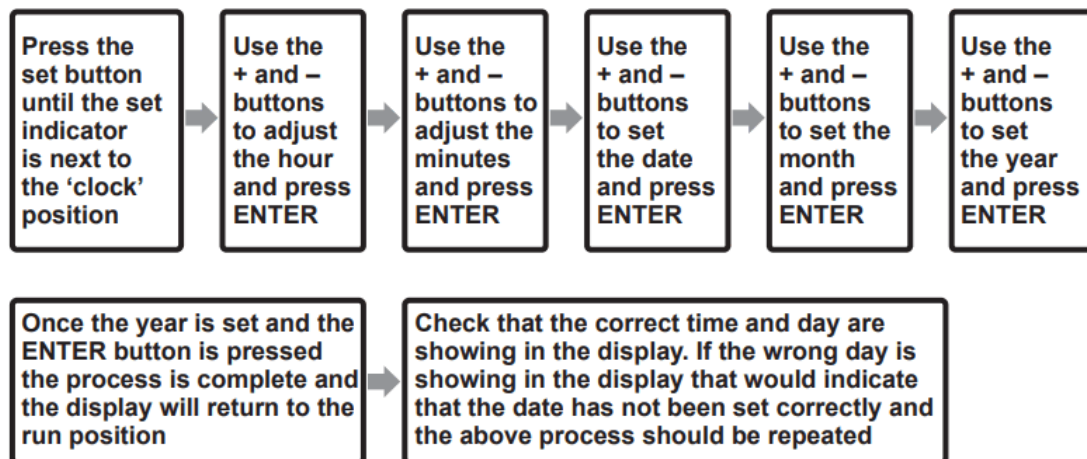
Auto	The program follows all programmed ‘ON’ and ‘OFF’ times.
All-day	Channel operates from 1st ‘ON’ time until 3rd ‘OFF’, ignoring all switching times in between.
24hrs	Channel will be constantly ‘ON’.
Off	Channel will be constantly ‘OFF’, there is the ability to turn off the heating during the summer without altering the program times. On the hot water channel, the boost is still available. As both channels are totally independent it is possible to have them set differently if necessary.

All of the settings above will be permanent, i.e. unaffected by program times, until alteration by the user. The diagram below illustrates how to alter the setting, it assumes that the channel is in the AUTO mode, to begin with.



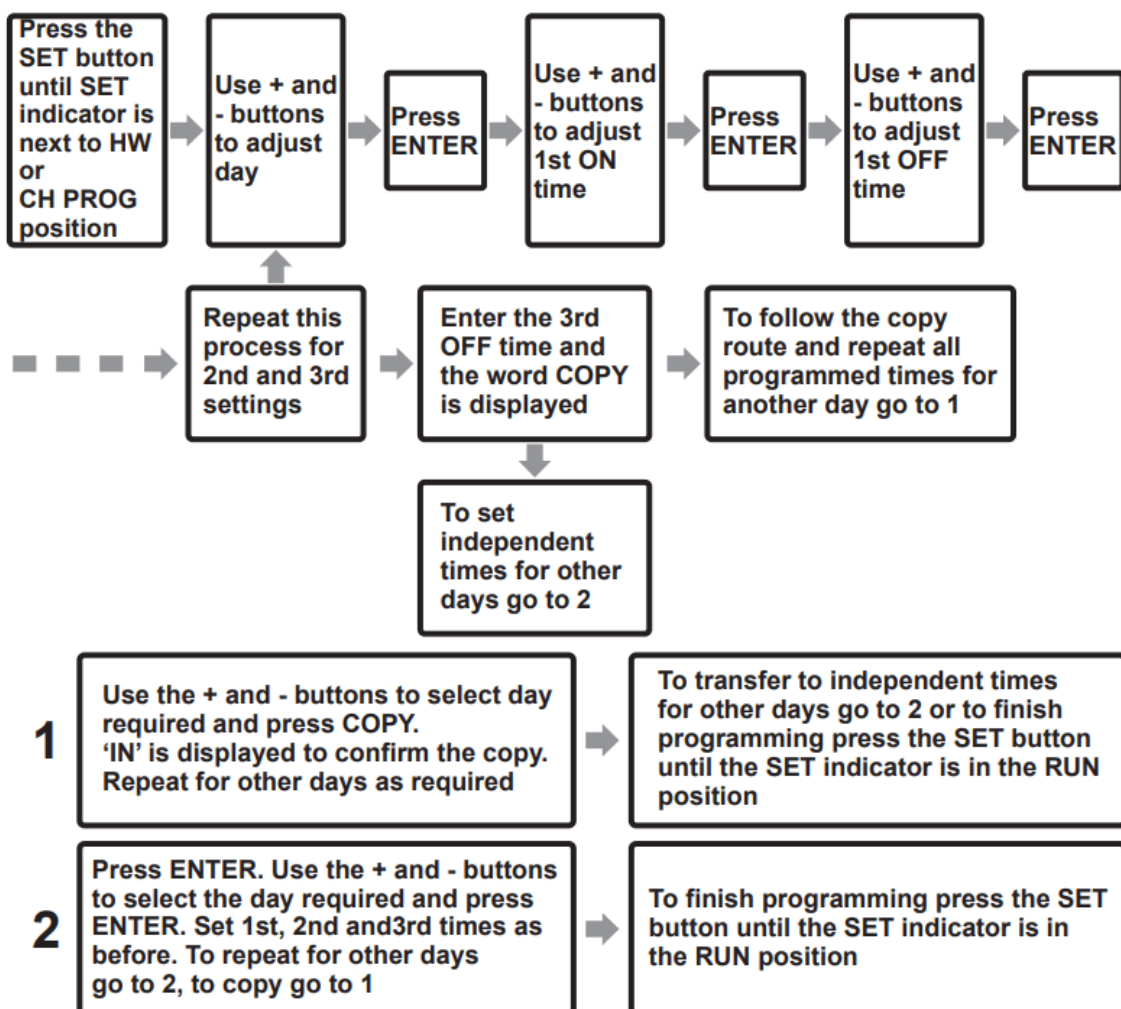
## Setting Time of Day and Date

The ServicePlus S27R programmer has a built-in clock and calendar. This will mean that you will need to enter the date as well as the time on the initial set up or if the factory re-set has been used. Having done this, the clock will automatically adjust for BST/GMT time changes throughout the year.



## Setting the On and Off Times

To alter these settings please proceed as follows:-



## Default Time settings

1st ON	1st OFF	2nd ON	2nd OFF	3rd ON	3rd OFF
6.30 AM	8.30 AM	12.00 PM	12.00 PM	4.30 PM	10.30 PM

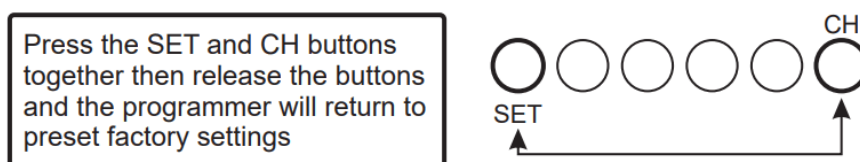
The default time settings shown above are preset at the factory

NB. The factory default settings for the 2nd ON/OFF times are both set at 12:00pm (midday) which cancels this 'ON' period giving 2 ON/OFF periods for the day. If a midday period is required set the 2nd ON and OFF times accordingly. If not press ENTER twice.

Resetting the Programmer Electronic equipment can in some circumstances be affected by electrical interference. If the programmer's display becomes frozen or scrambled; or if you wish to revert back to the default time settings please reset by pressing the SET and CH buttons together as shown below.

After initial installation it is advisable, before programming the ServicePlus for the first time, to reset the unit.

Resetting can only be achieved with the power 'ON' by pressing the SET and CH buttons together. This will return the programmer to the factory set default times.



## General Information

## Battery

The programmer is fitted with a non-rechargeable, long-life battery, which will maintain the programmed time settings for a minimum of two years with the supply disconnected.

## Battery Insertion

To achieve the intended battery life, it should be inserted correctly by matching the polarity.



## Service and Repair

This programmer is NOT user-serviceable. Please do not dismantle the unit.

In the unlikely event of a fault developing please refer to the RESETTING THE PROGRAMMER section of this user guide shown on page 7. If this fails to resolve the problem, please contact a local heating engineer or a qualified electrician.




Secure Meters (UK) Ltd  
Secure House, Lulworth Close,  
Chandler's Ford,  
Eastleigh, SO53 3TL, UK  
t: +44 1962 840048 f: +44 1962 841046  
[www.securemeters.com](http://www.securemeters.com)



**Part Number P84355 Issue 7**

## Documents / Resources

 <p><b>SECURE</b> ServicePlus S27R Series 2 User Operating Instructions Two Channel Central Heating and Hot Water Programmer</p> <p>The ServicePlus S27R two channel programmer gives independent control over hot water and heating with up to 12 ON/OFF settings for each day of the week. It also has a 7 hour manual override for the hot water and can also override the central heating.</p> <p>There is also a programming switch allowing permanent selection of OFF/HEATING/ON.</p> <p>Additionally, the ServicePlus programmer gives an alarm warning after the annual filter check due date.</p>	<p><b><u><a href="#">SECURE ServicePlus S27R Series 2 Channel Central Heating and Hot Water Programmer [pdf] Instruction Manual</a></u></b></p> <p>ServicePlus S27R Series, 2 Channel Central Heating and Hot Water Programmer, ServicePlus S27R Series 2 Channel Central Heating and Hot Water Programmer, Hot Water Programmer, Water Programmer</p>
------------------------------------------------------------------------------------------------------------------------------------------------------------------------------------------------------------------------------------------------------------------------------------------------------------------------------------------------------------------------------------------------------------------------------------------------------------------------------------------------------------------------------------------------------------------------------------------------------------------------------------------------------------------------------------------------------------	--------------------------------------------------------------------------------------------------------------------------------------------------------------------------------------------------------------------------------------------------------------------------------------------------------------------------------------------------------