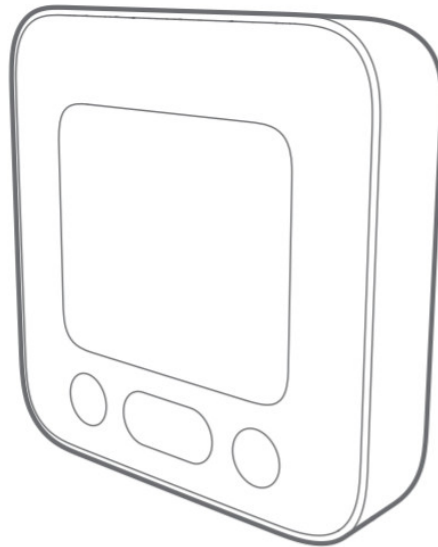


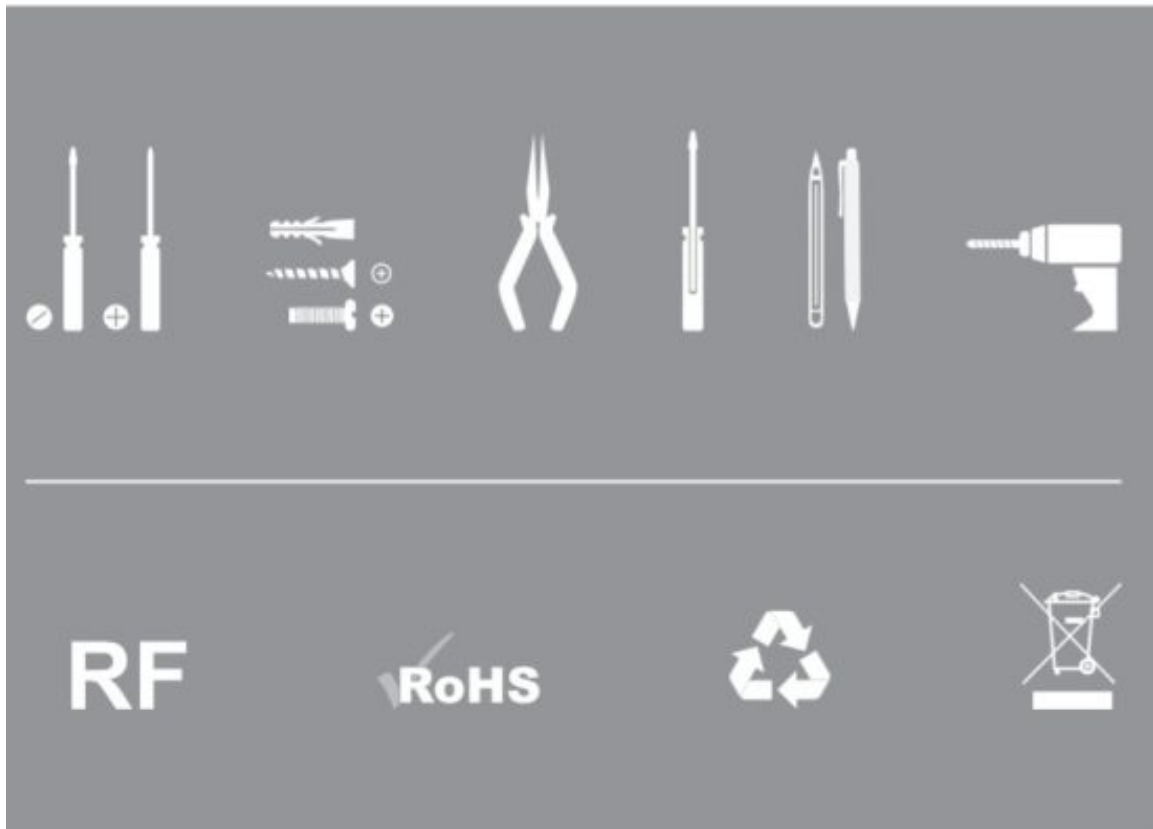
SECURE SCD100-000 Programmable Thermostat Display User Guide

[Home](#) » [SECURE](#) » SECURE SCD100-000 Programmable Thermostat Display User Guide 



SCD100-000 Programmable Thermostat Display User Guide





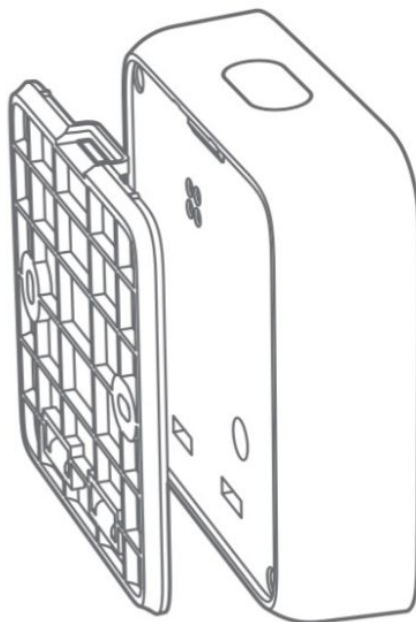
Follow these instructions and safety measures to avoid the risk of injury or damage to the equipment.

- Local best practices and regulatory stipulations must be observed.
- Installation should be done by trained personnel only.
- Do not use solvents or abrasive materials to clean the device, use only an anti-static cloth.

As part of Secure Meter's continuous endeavor to improve, product design and specifications mentioned are liable to change. System functionality information, illustrations, and product aesthetics published in the document may vary from those of your product.

Contents

- [1 In the box](#)
- [2 Technical specifications](#)
- [3 Ideal mounting location](#)
- [4 Locations to avoid](#)
- [5 Installation](#)
- [6 Commissioning the new
PTD](#)
- [7 Mount](#)
- [8 Documents / Resources](#)
- [9 Related Posts](#)

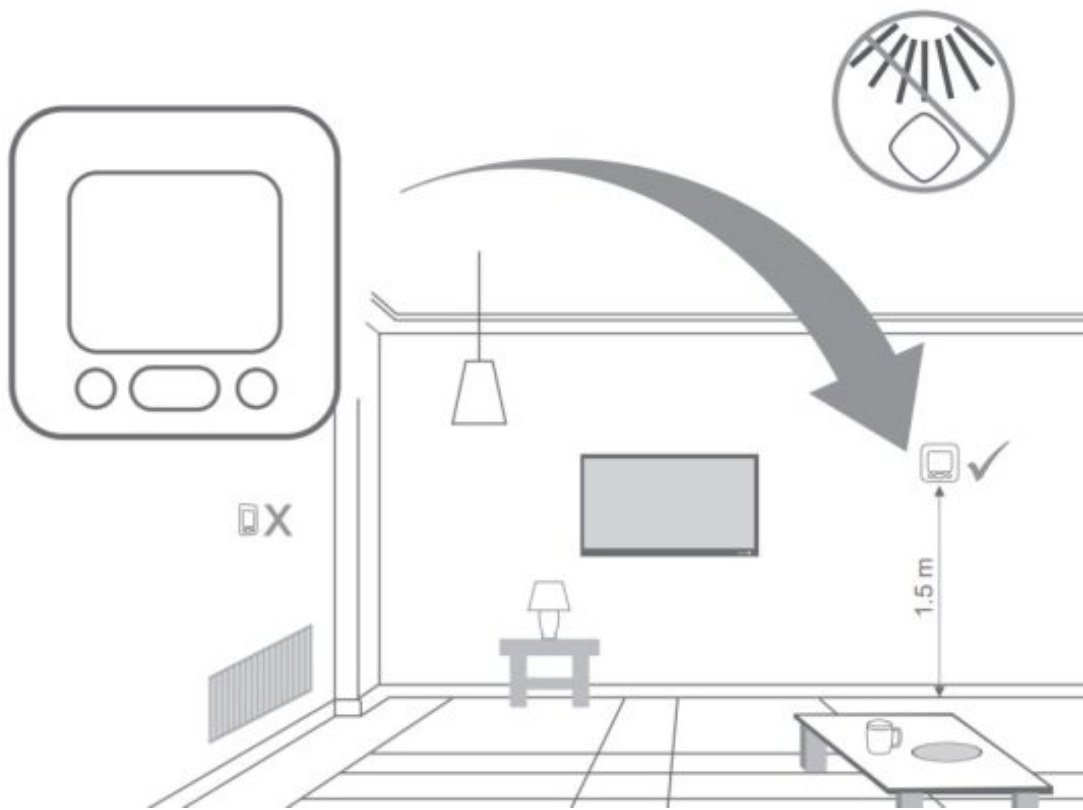


Programmable Thermostat Display PTD + Backplate

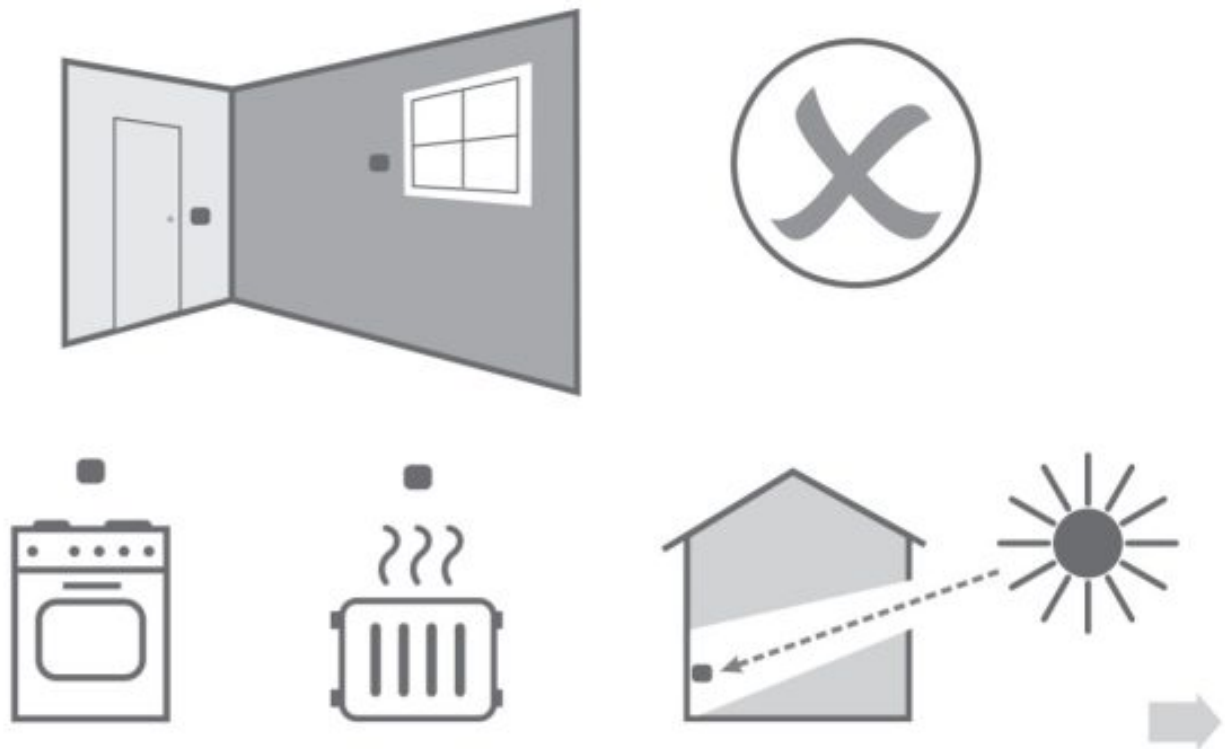
Technical specifications

Operating temperature	0°C to 40°C
Storage temp. range	-20°C to +70°C
Relative humidity	0% to 95% non condensing
Pollution degree	2
Ingress protection	IP30
Battery specifications	Non replaceable 2x A Lithium-ion, 3.6 V, 3600 mAh (each)
Battery life	≈12 years
Wireless communication	2.4 GHz RF
Standards	<ol style="list-style-type: none"> 1. EN 300-328 2. Safety standards: IEC 62368-1 3. EN 301 489-1, 17 (RED) 4. RoHS Directive 2011/65/EU 5. WEEK

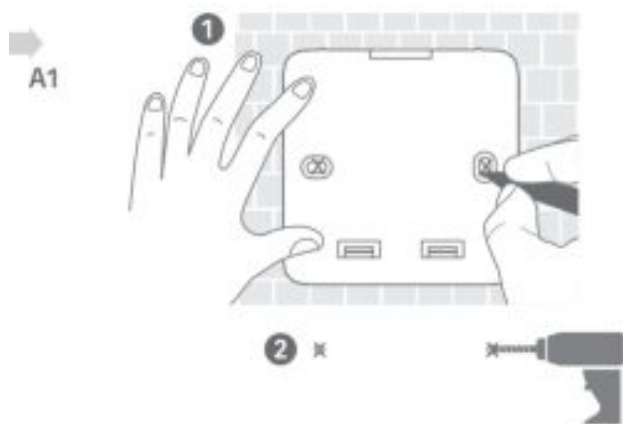
Ideal mounting location



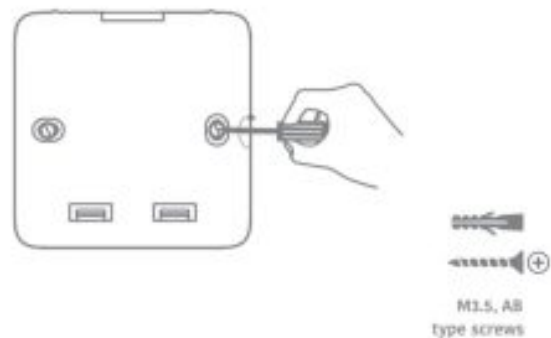
i Locations to avoid



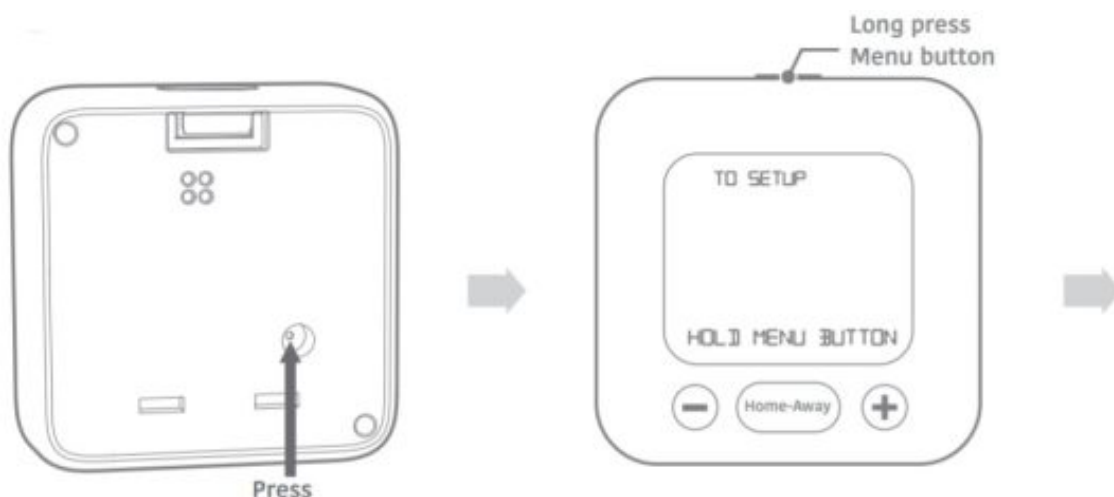
Installation



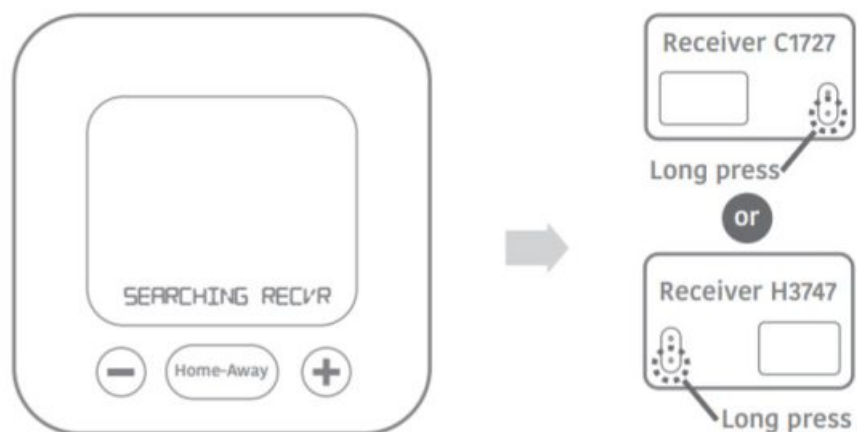
A2



Commissioning the new PTD



Note: The product is shipped in deep sleep mode to save battery. To wake up the device, you must press the button at the rear before setup. The PTD has great temperature sensitivity and you may observe a sudden rise in ambient temperature during the commissioning process triggered by your touch. This is only temporary.



Note: Make sure that the receiver is powered On.

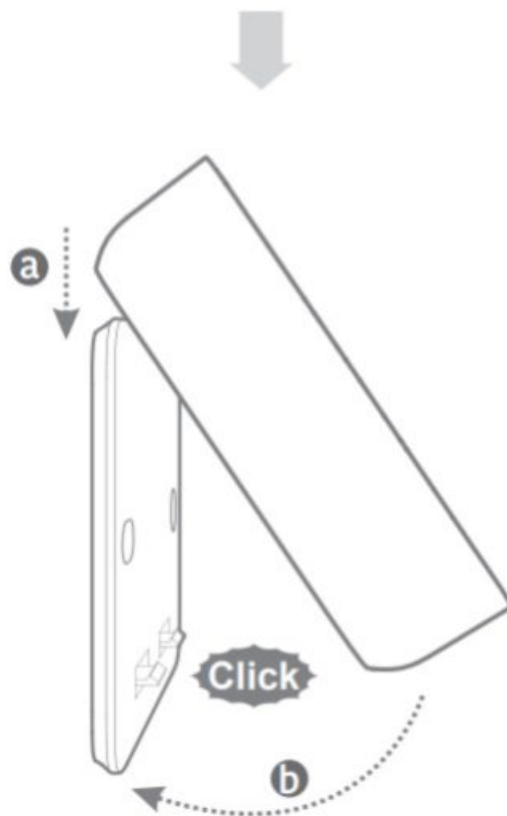


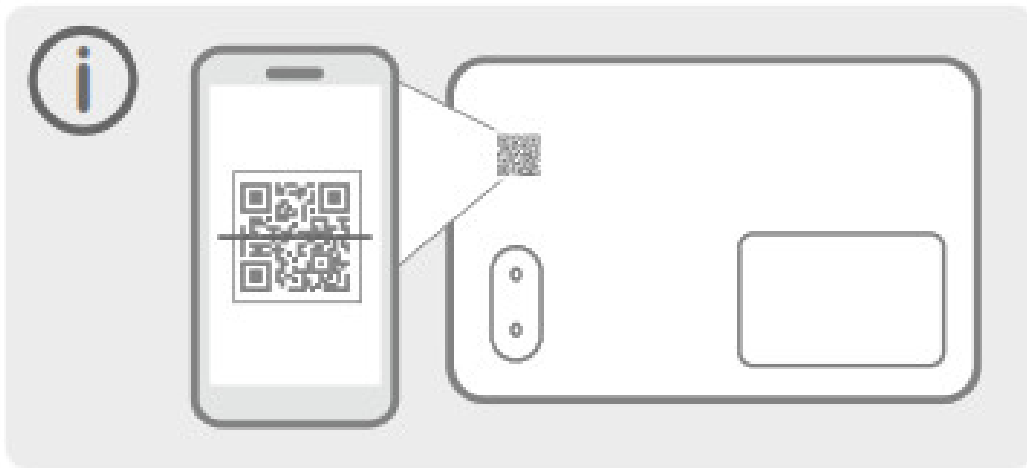
PTD will search for the receiver and display the receiver serial number. To verify the number, check your product

box packaging or scan the QR code on the receiver using your smartphone. Press + or – to select (Yes or No). Press Home-Away to confirm selection



Mount





Refer to the user manual for more details



www.securemeters.com

Secure Meters (UK) Ltd
South Bristol Business Park,
Roman Farm Road, Bristol, BS4 1UP
United Kingdom

Bristol Phone: +44 117 9788 700

UK Free Phone: 08081687224

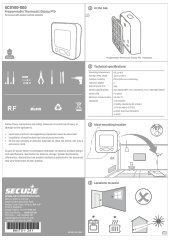
UK Direct : +44 196 2826 225

support@securemeters.com

Copyright © 2020-21, SIHPL



BGX701 - 291



[SECURE SCD100-000 Programmable Thermostat Display](#) [pdf] User Guide
SCD100-000, Programmable Thermostat Display, SCD100-000 Programmable Thermostat Display, Thermostat Display