

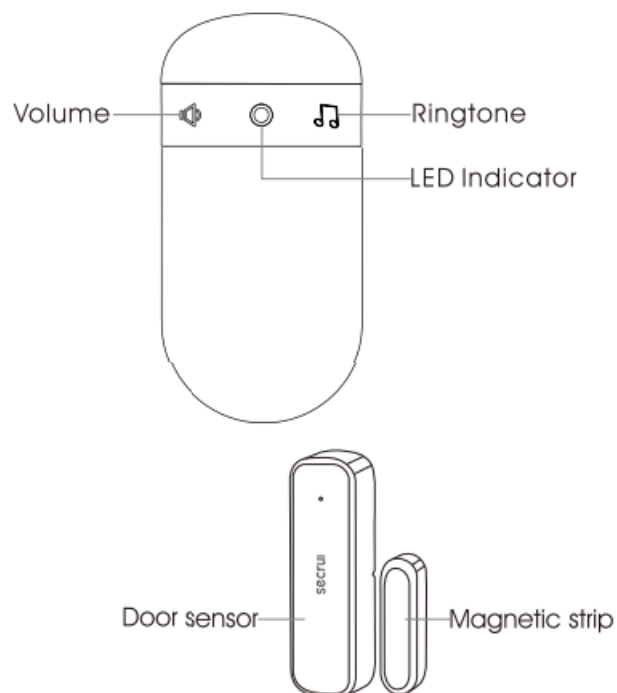


secrui 007 Wireless Door Open Sensor Alarm Chime Kit User Manual

[Home](#) » [secrui](#) » secrui 007 Wireless Door Open Sensor Alarm Chime Kit User Manual 

secrui

Wireless Door Open Chime kit
User Manual

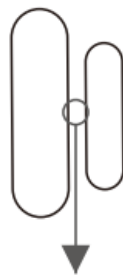
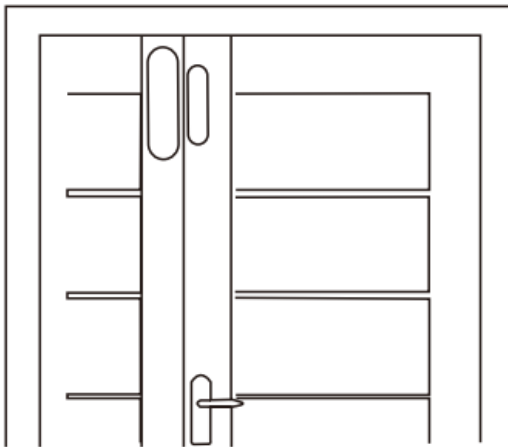


Contents

- 1 Product Introduction
- 2 Package List
- 3 Features
- 4 Operating Instructions
- 5 Selecting the Ringtone
- 6 Setting the Volume
- 7 Receiver and Door Sensor Pairing
- 8 Installation for magnetic door sensor
- 9 Specifications of Receiver
- 10 Documents / Resources
 - 10.1 References

Product Introduction

It's a Wireless Door Open Chime kit. When the two parts of the door sensor are separated more than 0.4 inch, door sensor will be triggered, then you will hear the ringtone from the receiver. which can help deter break-ins, keep your children and pet safe, and never miss a customer when they come. It is ideal door alarms for home, office, store, warehouse, garages, and more!



Installation gap ≤ 0.4 inch

Package List

Secrui Doorbell Receiver(s), Secrui Magnetic Door Sensor(s), User Guide

Features

- 52 tones optional
- Colorful LED indicator
- 5 volume levels adjustable (mute mode with light only)

Memory function: Keep the previous setted tune after re-plugging it

Operating Instructions

Button Press

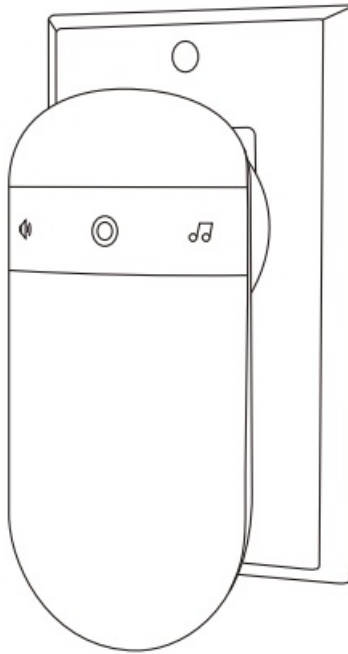


short press < 3s



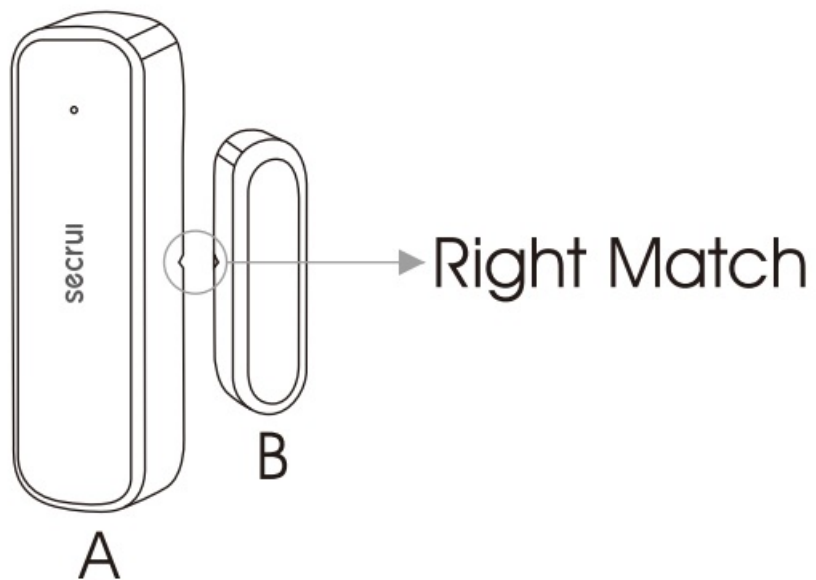
Long press >3s

ON

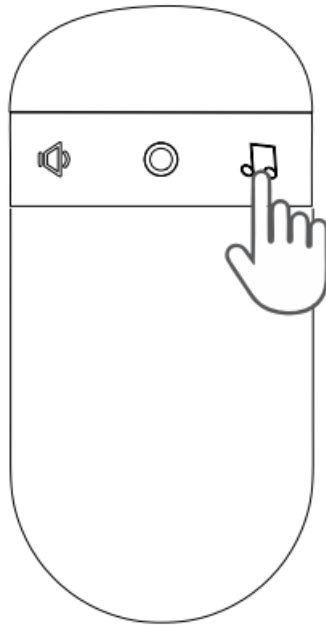


100-240V, 50-60Hz AC outlet

Door Sensor & Magnetic Strip Matching

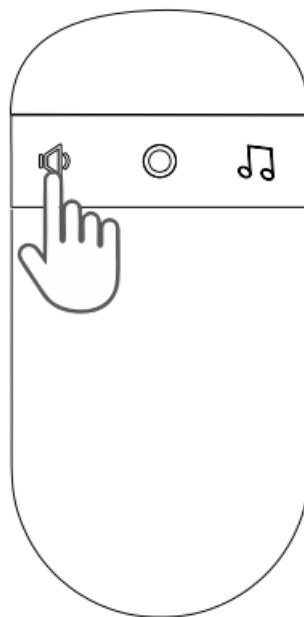


Selecting the Ringtone



- Short press Cycle FORWARD through the tones
- Long press [hear a short beep sound | Cycle REVERSE through the tones

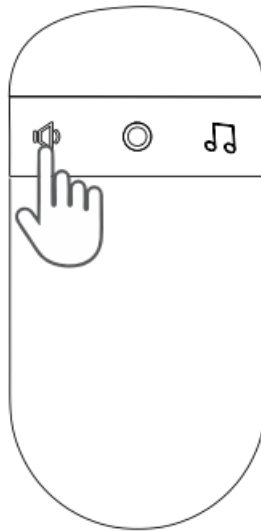
Setting the Volume



Short press, 1-5 volume setting

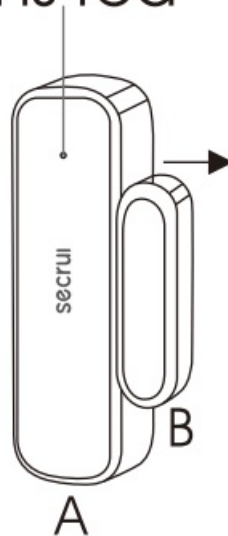
Note: The volume changes to the largest automatically every time after the receiver is power on.

Receiver and Door Sensor Pairing



1. Long press, receiver beeps once
2. Move8
Receiver beeps twice Get the two parts together
3. Move B again
Receiver beeps once
Get the two parts together

Turns red

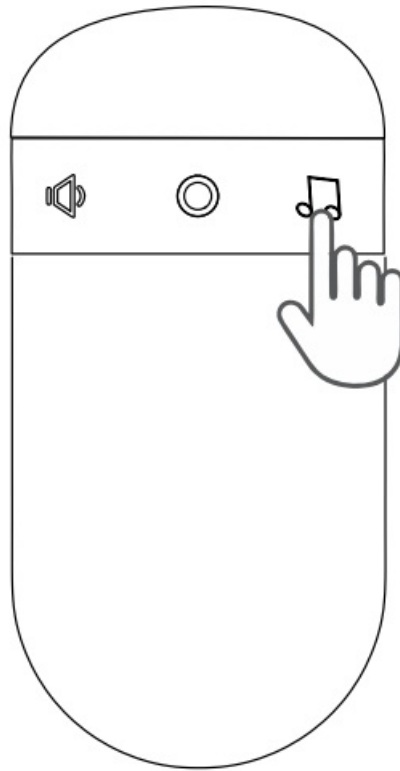


4. Short press
5. Move8 Music is ringing, adding successfully.

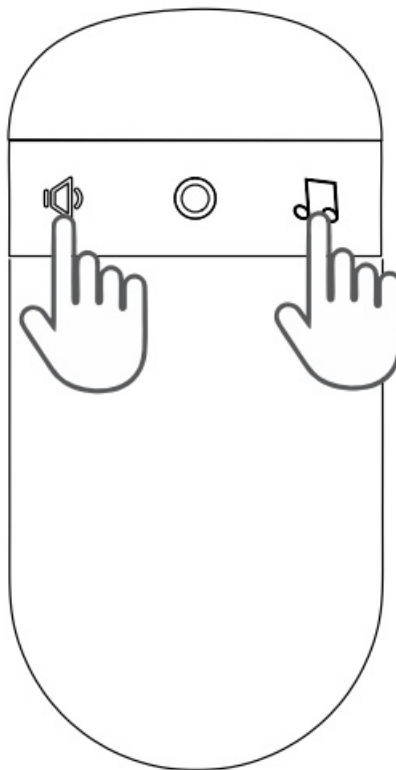
(Adding the second door sensor or more please according to the above steps)

Fixed-tone: Adding a door sensor with a FIXED receiver ringtone

1. Short press select the favorite tone



2. Long press simultaneously Receiver beeps once



3. Move B

Receiver beeps twice

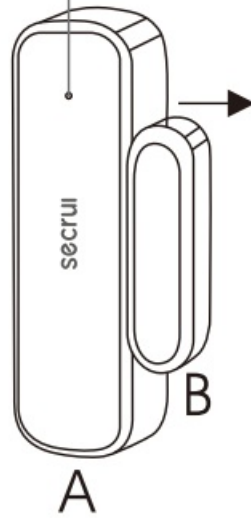
Get the two parts together

4. Move B again

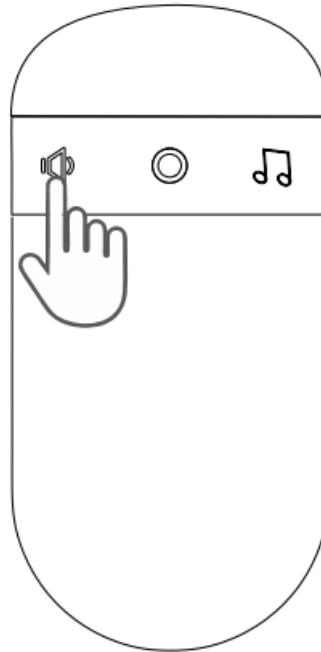
Receiver beeps once

Get the two parts together

Turns red

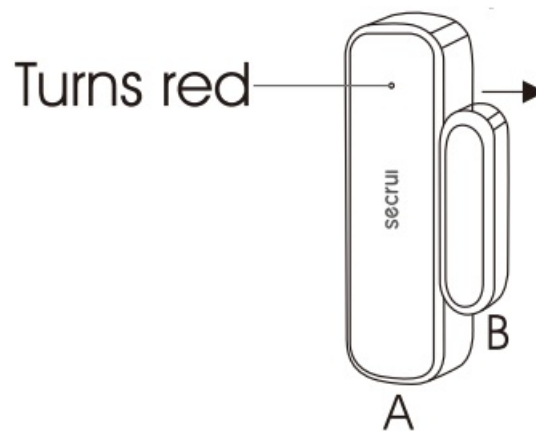


5. Short Press.



6. Move B

Music is ringing, adding successfully.

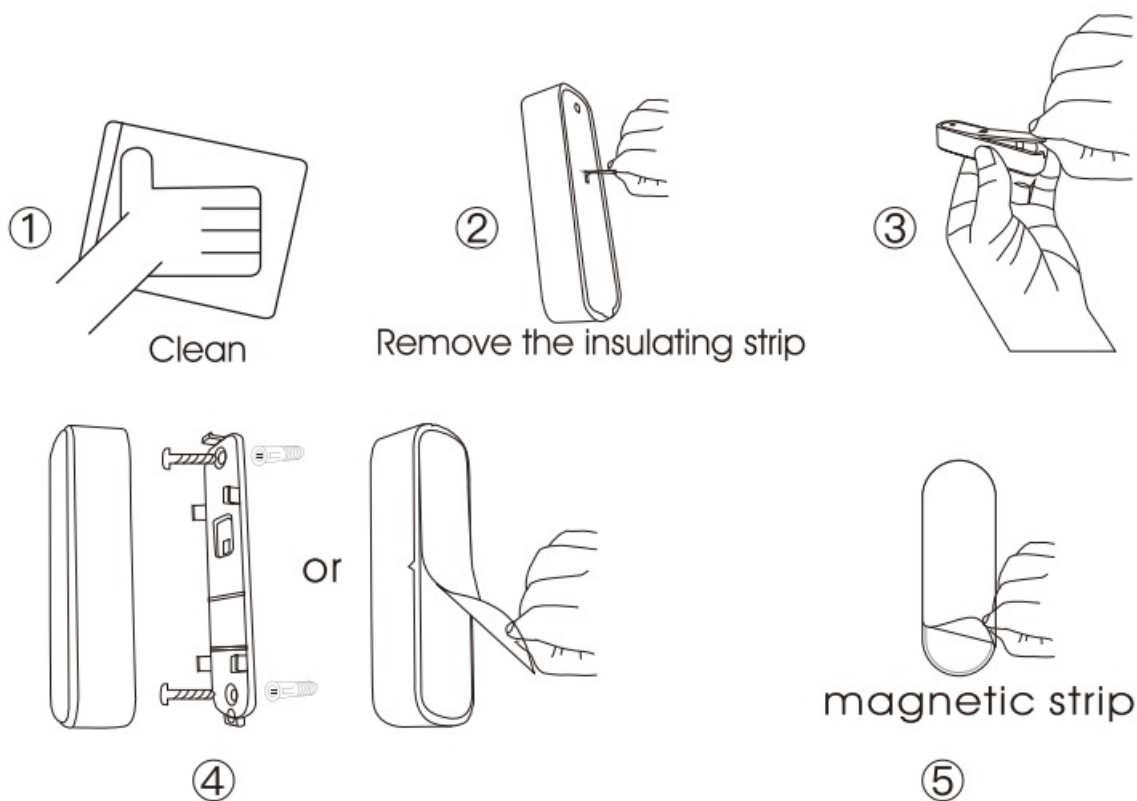


(Adding the second door sensor or more with a FIXED receiver ringtone please according to the above steps)

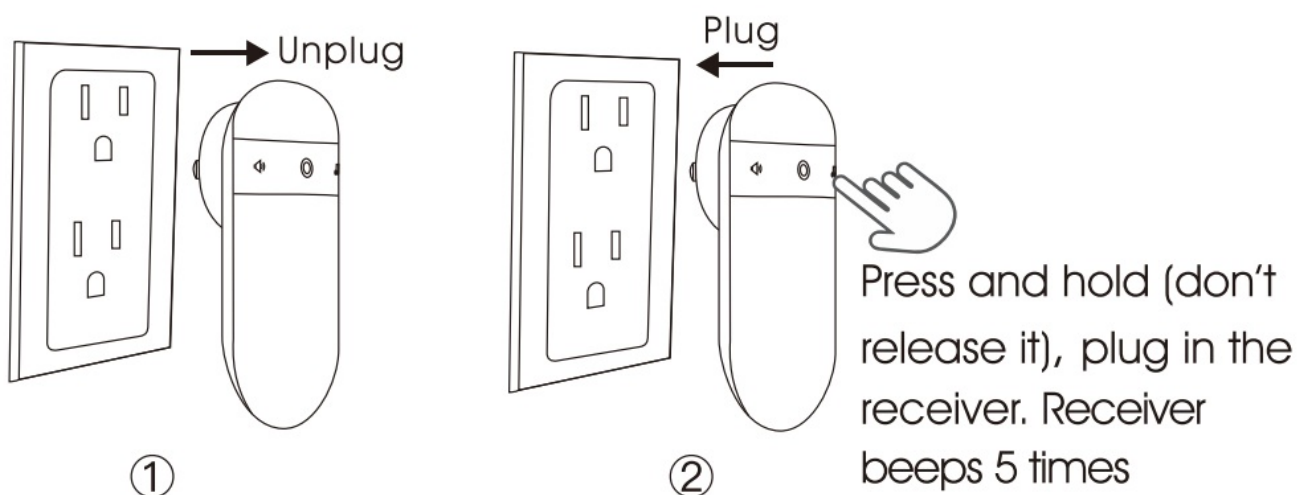
Note:

When in adding state, short press any keys on the receiver or leaves it 20s without any operation, the receiver will automatically quit the adding state.

Installation for magnetic door sensor

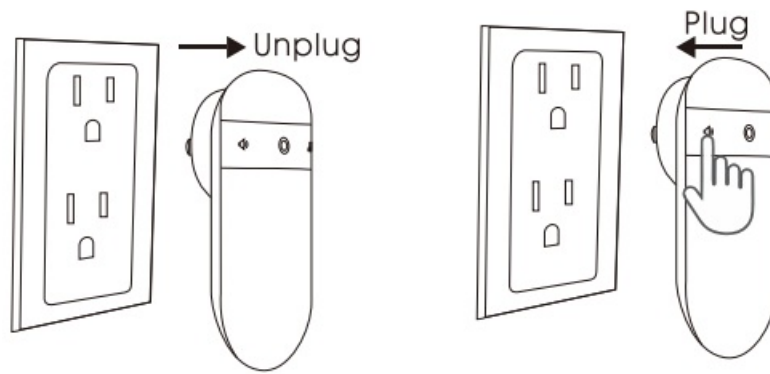


Return to Default First Ringtone (Ding Dong)-Pairing is not deleted

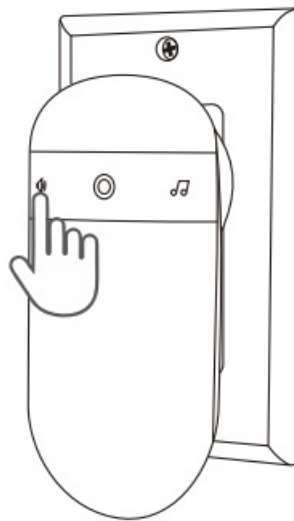


The tone will return to the first ringtone. "Ding Dang"

Clear All Settings – Unpair all door sensors from receiver



Press and hold (don't release it), plug in the receiver.



Press and hold, continuous I O beeps and the LED indicator flashes I O times. then gives a series of fast beeps.

Specifications of Receiver

Working voltage: 100-240V, 50-60Hz AC
 Standby current: < 3mA
 Working current: < 11 mA
 Radio frequency: 433MHz
 Operation range: 400 feet (in open area)

Specifications of Transmitter Button

Ip55 waterproof
 Working Temperature: -4F – 122F
 Working Humidity: 85%

Specifications of Door sensor

Non-waterproof
 Working Range: 400 ft (in open area)
 Working current: 3uA(standby), 1 5mA(Transmitting)
 Installation gap: < 0.4inch
 Working Temperature: -4 F – 122F
 Working Humidity: < 85%

Documents / Resources

	secrui 007 Wireless Door Open Sensor Alarm Chime Kit [pdf] User Manual 007, 007 Wireless Door Open Sensor Alarm Chime Kit, Wireless Door Open Sensor Alarm Chime Kit, Door Open Sensor Alarm Chime Kit, Open Sensor Alarm Chime Kit, Sensor Alarm Chime Kit, Alarm Chime Kit, Chime Kit, Kit
---	---

References

- [User Manual](#)