

SECO-LARM®

SECO-LARM  
SK-B241-PQ  
Enforcer  
Bluetooth  
Access  
Controllers



# SECO-LARM SK-B241-PQ Enforcer Bluetooth Access Controllers User Guide

[Home](#) » [SECO-LARM](#) » SECO-LARM SK-B241-PQ Enforcer Bluetooth Access Controllers User Guide 

## Contents

- [1 SECO-LARM SK-B241-PQ Enforcer Bluetooth Access Controllers](#)
- [2 Product Information](#)
- [3 Product Usage Instructions](#)
- [4 Getting Started](#)
- [5 Download and Install the App](#)
- [6 SL Access OTA Splash Screen](#)
- [7 Enter the ADMIN Passcode](#)
- [8 Choose the Firmware Source](#)
- [9 Select and Upload the Firmware](#)
- [10 Troubleshooting](#)
- [11 Documents / Resources](#)
  - [11.1 References](#)
- [12 Related Posts](#)

**SECO-LARM®**

**SECO-LARM SK-B241-PQ Enforcer Bluetooth Access Controllers**



## Product Information

### Specifications:

- Product Name: SL Access OTA
- Compatibility: Android phones
- Manufacturer: SECO-LARM
- Website: [www.seco-larm.com](http://www.seco-larm.com)

## Product Usage Instructions

### Download and Install the App

Download the SL Access OTA app from the Google Play Store and install it on your Android phone.

**IMPORTANT WARNING:** Make sure to visually monitor the door while the OTA update is in progress as it may unlock the connected lock during the process.

### Enter the ADMIN Passcode

After opening the app, enter the ADMIN passcode of the device you wish to update. Ensure you use the correct passcode to avoid issues during the update process.

## Device Selection

After entering the passcode, a list of devices available for update will appear. Choose the desired device by clicking on its name. Make sure to select the correct device to proceed.

## Firmware Update Process

Follow the on-screen instructions to complete the firmware update process. Ensure that the device remains powered on and connected during the update. The app will guide you through the necessary steps.

## Frequently Asked Questions (FAQ)

- **Q: Can I use the SL Access OTA app on iOS devices?**

A: No, the SL Access OTA app is not available for iOS devices. It is only compatible with Android phones.

- **Q: What should I do if I enter the wrong passcode during the update process?**

A: If you enter the wrong passcode, the app will prompt you to re-enter it. After three incorrect attempts, the app will lock up. You will need to power down the device, restart it, and reopen the app to try again.

- **Q: How can I ensure a successful firmware update?**

A: To ensure a successful update, maintain visual contact with the door during the process and verify that it is securely relocked after the update completes. Follow all on-screen instructions provided by the app.

## For Administrator Use Only

Firmware updates may be issued to solve particular issues or sometimes to add features. When an update is available, there will be a notice on the device product page at the SECO-LARM website, [www.seco-larm.com](http://www.seco-larm.com)

The Bluetooth® word mark and logos are registered trademarks owned by Bluetooth SIG, Inc. and any use of such marks by SECO-LARM is under license. Other trademarks and trade names are those of their respective owners.

## Getting Started

### You need:

An ENFORCER® Bluetooth® Access Controller



SK-B241-PQ shown Various models available

- An Android smartphone equipped with Bluetooth® LE 4.0
- The SL Access OTA app (supports Android 5.0 and later, firmware update is not supported on iOS)

**PRIVACY:**

SECO-LARM respects your privacy. No data or personal information is shared with SECO-LARM or any other party by the SL Access or SL Access OTA app. No data or personal information is uploaded to the cloud. For more information about SECO-LARM's privacy policy, visit [www.seco-larm.com/legal.html](http://www.seco-larm.com/legal.html)

**Download and Install the App**

*SL Access OTA*



Download the SL Access OTA app and install it on your Android phone.

**IMPORTANT WARNING:** During the OTA update, the keypad/reader will reset itself which may unlock the connected lock. For security, it is important to maintain visual contact with the door while the update is proceeding and check that it is securely relocked before leaving the site.

**NOTES:**

- Be sure to set your smartphone to automatically download app updates so that you always have the latest version of the app.
- The SL Access OTA app is not available on iOS.

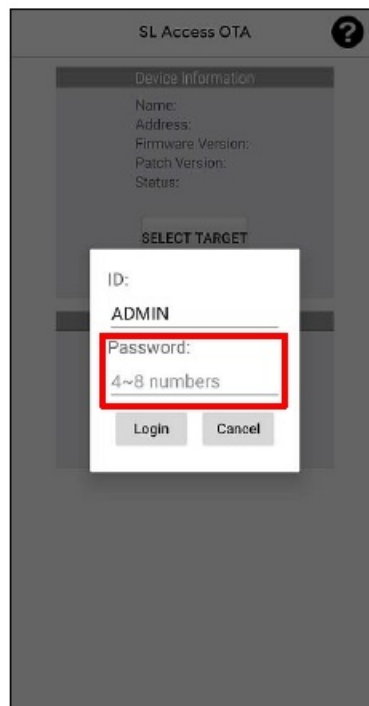
**SL Access OTA Splash Screen**

When opening the app the first time, you will see the following splash screen:



## Enter the ADMIN Passcode

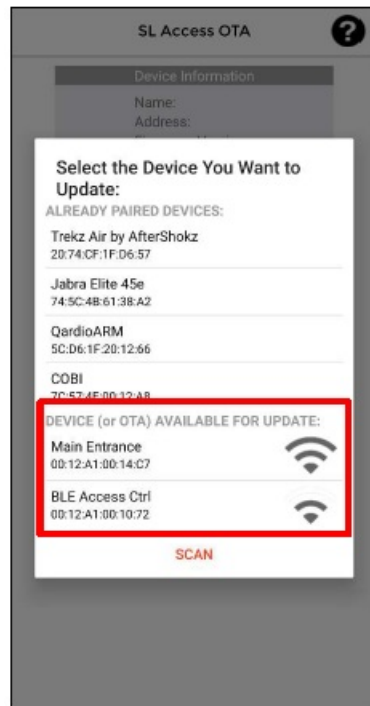
After the splash screen, you will be asked for the ADMIN passcode of the device you wish to update.



## NOTES:

- Use the ADMIN passcode of the device you intend to update.
- If you enter the wrong passcode, when you later select the device to update, you will be asked to enter the passcode again.
- The SL Access OTA app will lock up after 3 invalid passcodes. The device will need to be powered down and then powered up again to retry. You may also have to close the app and reopen it.

After the splash screen, a device selection screen will appear as shown below:

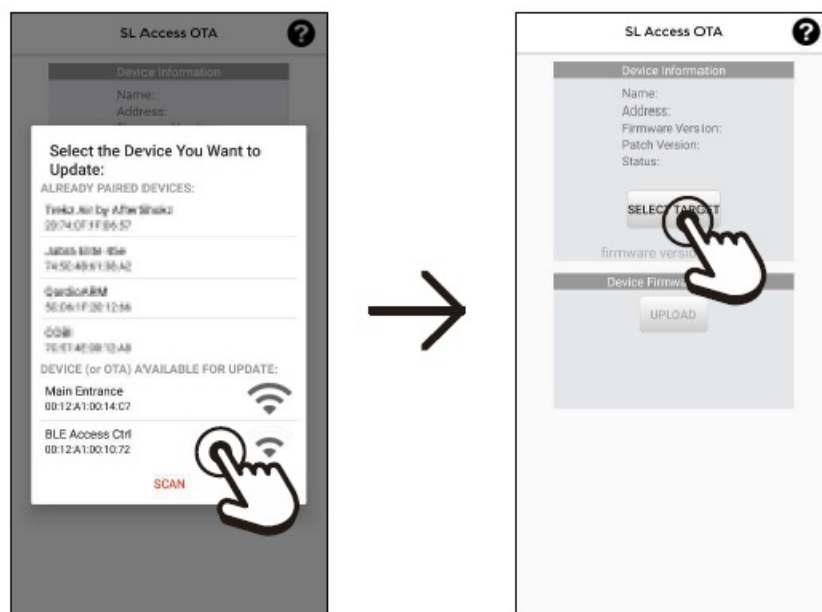


#### NOTES:

- You will see a list of Already Paired Devices paired to your phone. These can be ignored.
- The section Device (or OTA) Available for Update: will show any devices in range that can be updated. In the example above, there are two devices that can be updated.
- If you don't see your device, move closer to make sure you are in Bluetooth range and click "Scan" to refresh the list.

#### Choose the Desired Device

•



Choose the name of the device you want to update (one beep will sound). In the above example, we will choose BLE Access Ctrl.

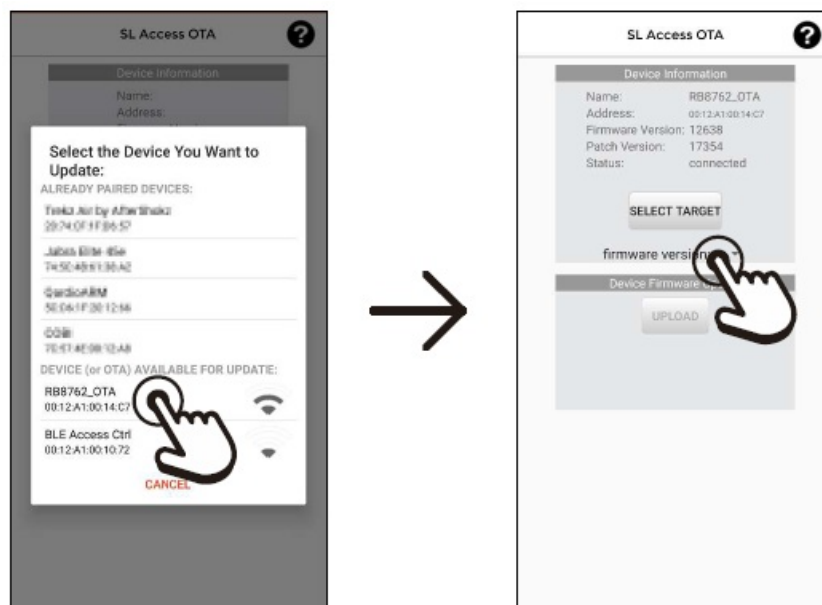
- To move to the next step, click Select Target.

## NOTES:

- The device with the strongest signal will appear at the top of the screen. If no device appears, move closer to the device and press Scan to refresh the list.
- Ignore any devices in the Already Paired Devices section.
- If the passcode you entered earlier is incorrect for this device, you will be asked to enter it again. The app will lock after 3 invalid passcodes. To try again, remove power to the device, reconnect power, and restart the process. You may also have to close the app and reopen it.
- Once you choose your device to update, you must finish the process and allow the OTA app to upload a firmware version as in the following steps.

## Choose the Firmware Source

•



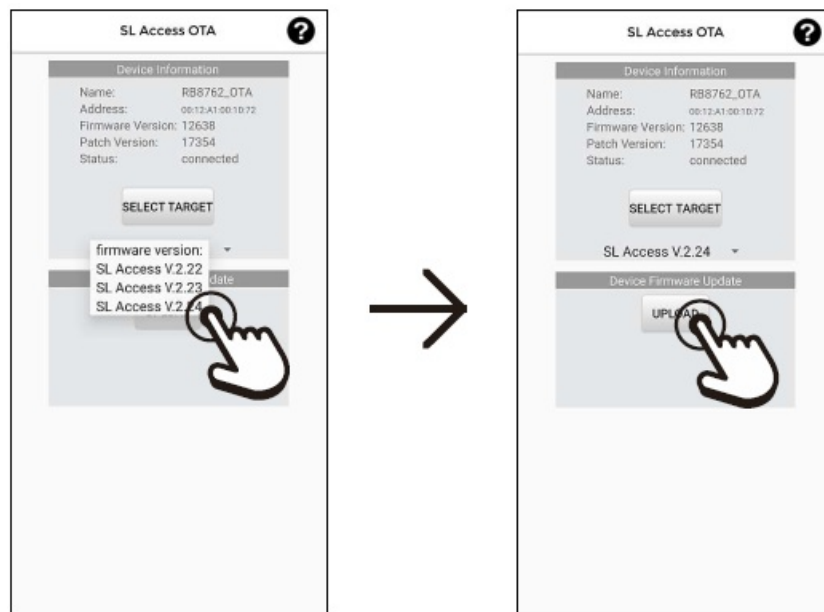
Click the RB8762\_OTA that will now appear in the Device (or OTA) Available for Update: list.

- A firmware version: dropdown will now appear. Click on this dropdown to see a list of firmware versions.

## NOTES:

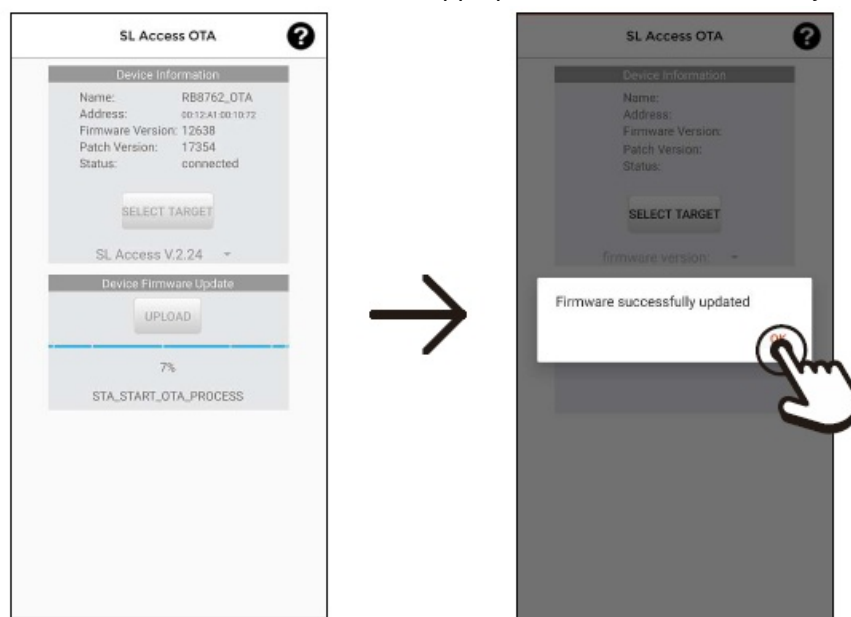
- You will also see any other available device in range. Do not choose at this time. At this point, choose only the OTA update. You can update other devices later.
- Any compatible device in range will show here. That does not mean that it does not already have the latest firmware installed.

## Select and Upload the Firmware



- Choose the correct firmware version (normally the latest version).
- Click the Upload button to start the process. A continuous beep will sound.

**NOTE:** If, for any reason, you decide to remain with the current firmware version, you must still complete the process in the app. Failure to do so may render your device inaccessible (see Troubleshooting, pg. 11 to fix). Simply choose your current firmware version and let the app upload that version back to your device.



The device will continue to sound a long beep during the entire process. Wait on the update to complete.

When the update has completed another short beep will sound and the Firmware successfully updated popup will appear. Click OK to finish.

#### NOTES:

- To update a second device, after clicking on OK, you can click Select Target and choose another device.
- Once you have downloaded the SL Access OTA app the first time, if your phone is set to automatically update apps, this app will also update when there is a revision, giving you access to any firmware updates. However, it will not notify you of available updates. Check the product page on the SECO-LARM website to see if a new update is available if you encounter problems.



Troubleshooting


I don't see my device listed	<ul style="list-style-type: none"><li>• Make sure that your phone's Bluetooth is turned on.</li><li>• Move closer to the device. You must be in Bluetooth range.</li></ul>
I see devices that have already been updated listed	<ul style="list-style-type: none"><li>• The app will show all devices in range whether they have been updated or not.</li></ul>
I tried to update but the update failed with an error message	<ul style="list-style-type: none"><li>• Remove power to the device and power up again. Close the app and restart.</li><li>• Repeat the above but also restart your phone.</li></ul>
How can I know if I should update the firmware?	<ul style="list-style-type: none"><li>• Neither the <i>SL Access OTA</i> app nor the <i>SL Access</i> app can notify you of new firmware.</li><li>• If you encounter problems, first check the product page on the SECO-LARM website to see if a firmware update is available.</li></ul>
I closed the app before updated because I didn't need to update, but now my device doesn't show up when I open the <i>SL Access</i> app	<ul style="list-style-type: none"><li>• Run the OTA app again and choose the correct firmware, even if it is already on your device, and allow the update to finish without interruption.</li></ul>

**NOTICE:** The SECO-LARM policy is one of continual development and improvement. For that reason, SECO-LARM reserves the right to change specifications without notice. SECO-LARM is also not responsible for misprints. All trademarks are the property of SECO-LARM U.S.A., Inc. or their respective owners. Copyright © 2023 SECO-LARM U.S.A., Inc. All rights reserved.

SECO-LARM ® U.S.A., Inc.

- 16842 Millikan Avenue, Irvine, CA 92606
- Website: [www.seco-larm.com](http://www.seco-larm.com)
- Phone: [949-261-2999](tel:949-261-2999) | [800-662-0800](tel:800-662-0800)
- Email: [sales@seco-larm.com](mailto:sales@seco-larm.com)

Documents / Resources



**[SECO-LARM SK-B241-PQ Enforcer Bluetooth Access Controllers](#)** [pdf] User Guide  
SK-B241-PQ Enforcer Bluetooth Access Controllers, SK-B241-PQ, Enforcer Bluetooth Access Controllers, Bluetooth Access Controllers, Access Controllers, Controllers

References

- [🌐 La Armería de Madrid - fabricantes de armas y rifles](#)
- [User Manual](#)

This website is an independent publication and is neither affiliated with nor endorsed by any of the trademark owners. The "Bluetooth®" word mark and logos are registered trademarks owned by Bluetooth SIG, Inc. The "Wi-Fi®" word mark and logos are registered trademarks owned by the Wi-Fi Alliance. Any use of these marks on this website does not imply any affiliation with or endorsement.