

## Contents [ [hide](#) ]

- [1 seca 545-452 Interface Module](#)
- [2 Product Information](#)
- [3 Configuring the Wi-Fi connection](#)
- [4 FAQ](#)
- [5 Documents / Resources](#)
  - [5.1 References](#)



## seca 545-452 Interface Module








## Product Information



## Specifications

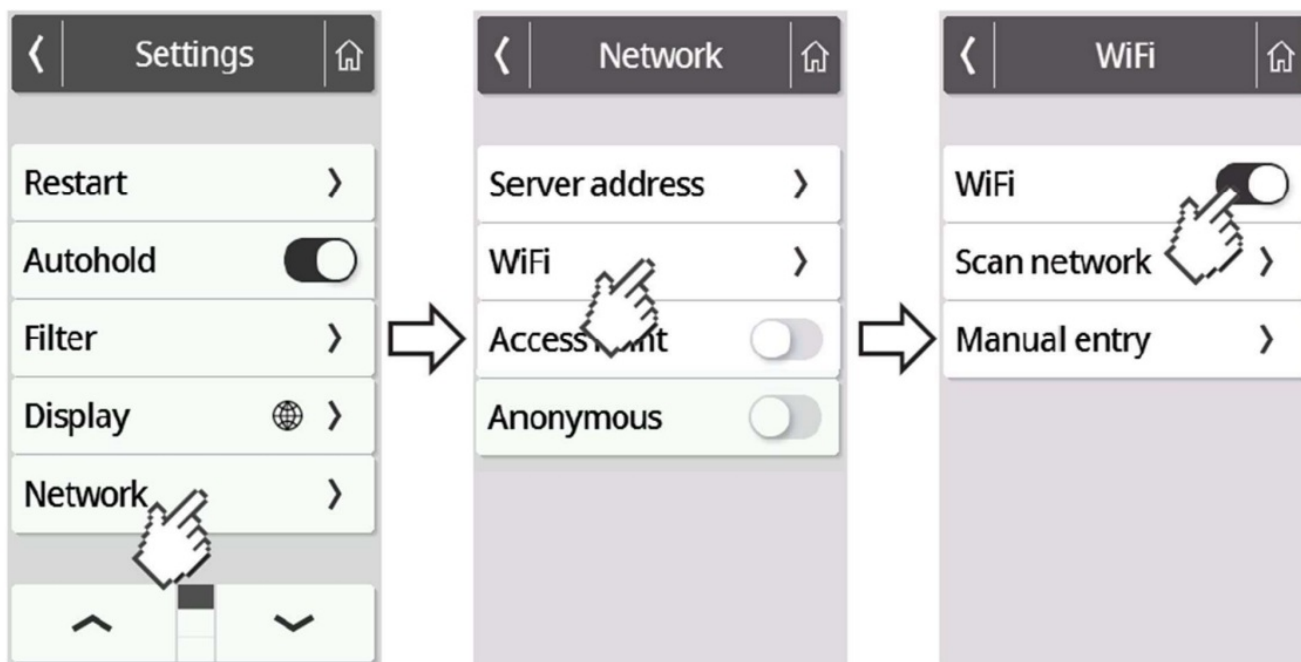
- Model: sec a mBCA Alpha (545) seca TRU Alpha (452)
- Feature: W-LAN-Configuration
- Firmware Version Requirement: 1.9.0 onwards
- Supported WiFi Networks: 2.4 GHz

## Configuring the Wi-Fi connection

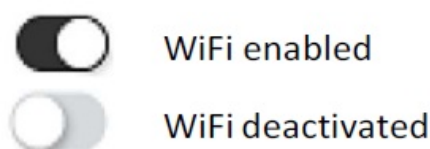
1. Make sure that there is no LAN cable connected to the device.
2. Make sure that TCP port 22020 is enabled for incoming and outgoing connections within your firewall.
3. Make sure that your seca device is powered by the supplied power supply.
4. Press the  button on the device display to access the device settings.
5. Use the  or  buttons to get to the “About” menu and call it up.
6. Use the  or keys  to access the “System Version” submenu.
7. The version number is displayed in green letters. This guide describes the WLAN configuration from firmware version 1.9.0 onwards. If the firmware version number is not displayed in green letters, please contact seca Service.



8. Use the  or buttons  to get to the “Network” menu and call it up.
9. Go to the “WiFi” menu.

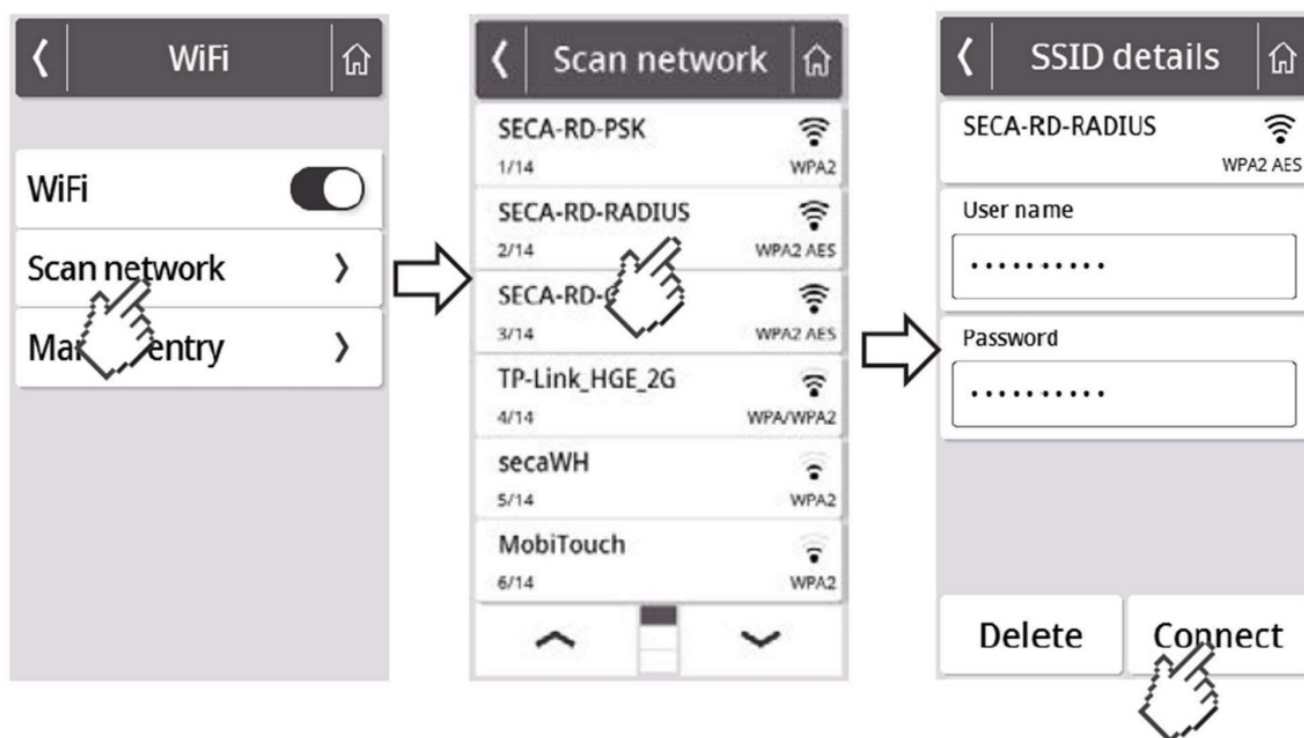


10. Activate the WiFi function.



11. Press the “Scan” menu.

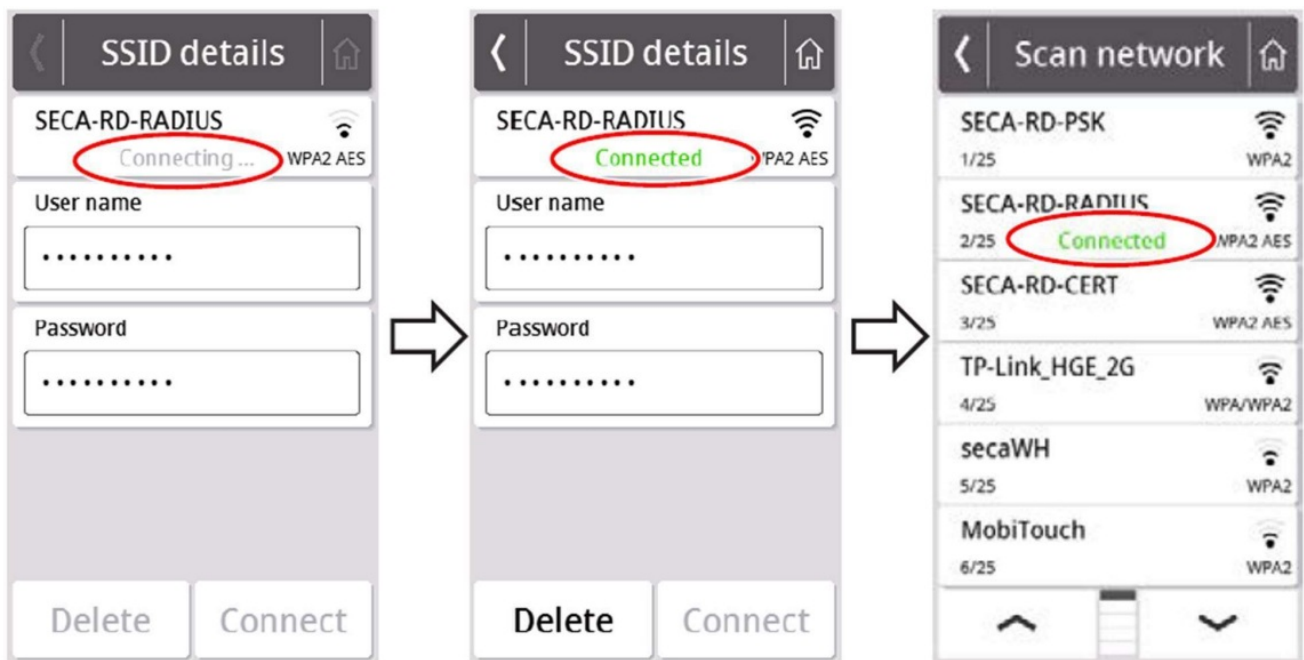
The device will now search for available WiFi networks. This may take a moment.



12. Select the network to which you want to connect the seca device. (Example here: SECA-RD- RADIUS with WPA2 AES encryption standard)

**Attention:** Only 2.4 GHz WiFi networks are supported.

13. Enter the username (if required) and password for the selected WiFi network. To do this, press into the respective text field. After successfully entering, press the “Connect” button.




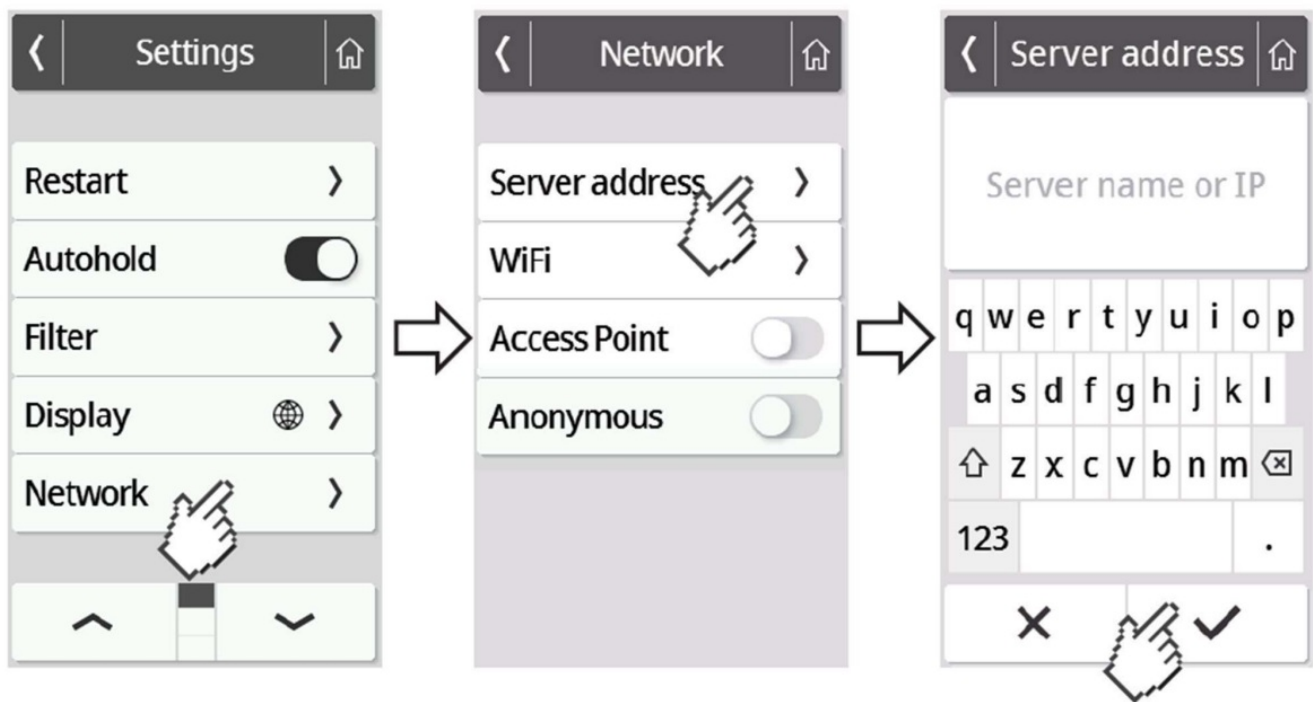
The seca device now establishes a connection to the selected WiFi network. As soon as the connection is established, it will be indicated by the message “Connected” behind the selected network.

14. Press the  button to exit the menu.



The signal strength of the connected WiFi network is now displayed at the top of the display.

15. Go to the “Network” menu again (see steps 4 and 5). Then select “Server Address”.
16. Enter the server name [gpx.secacloud.com](http://gpx.secacloud.com) ([gpx.us.secacloud.com](http://gpx.us.secacloud.com) for the US) of the seca cloud server. Confirm your entry with the  button.



[seca.com](http://seca.com)

## FAQ


What should I do if my firmware version number is not displayed in green letters?

Please contact seca Service for assistance.

Can I connect to 5 GHz WiFi networks with this device?

No, only 2.4 GHz WiFi networks are supported.

## Documents / Resources

	<p><a href="#">seca 545-452 Interface Module [pdf]</a> Instruction Manual</p> <p>545-452 Interface Module, 545-452, Interface Module, Module</p>
---	--

## References

- [User Manual](#)

📄 545-452, 545-452 Interface Module, Interface Module, Module,

📁 seca    seca

---

## Leave a comment

Your email address will not be published. Required fields are marked \*

Comment \*

Name

Email

Website

☐ Save my name, email, and website in this browser for the next time I comment.

**Post Comment**

**Search:**

e.g. whirlpool wrf535swhz

**Search**

[Manuals+](#) | [Upload](#) | [Deep Search](#) | [Privacy Policy](#) | [@manuals.plus](#) | [YouTube](#)

This website is an independent publication and is neither affiliated with nor endorsed by any of the trademark owners. The "Bluetooth®" word mark and logos are registered trademarks owned by Bluetooth SIG, Inc. The "Wi-Fi®" word mark and logos are registered trademarks owned by the Wi-Fi Alliance. Any use of these marks on this website does not imply any affiliation with or endorsement.