



## SEBSON WAL\_SENSOR\_F\_INT Wall Light With Motion Detector 15W Instructions

[Home](#) » [SEBSON](#) » SEBSON WAL\_SENSOR\_F\_INT Wall Light With Motion Detector 15W Instructions 



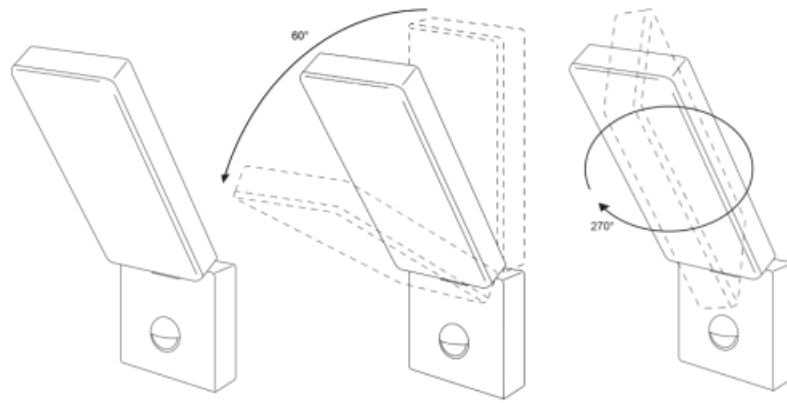
### WAL\_SENSOR\_F\_INT Wall Light With Motion Detector 15W Instructions

#### Contents

- [1 WAL\\_SENSOR\\_F\\_INT Wall Light With Motion Detector 15W](#)
- [2 General safety information:](#)
- [3 Technical Data:](#)
- [4 Documents / Resources](#)
- [5 Related Posts](#)

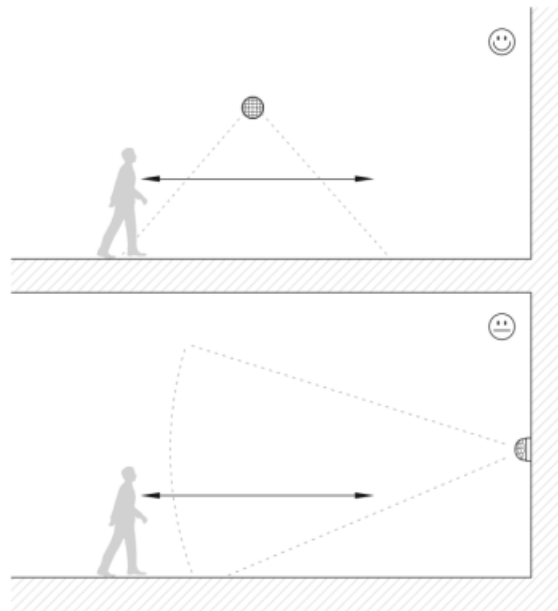
**WAL\_SENSOR\_F\_INT Wall Light With Motion Detector 15W**

**1:**



**2:**

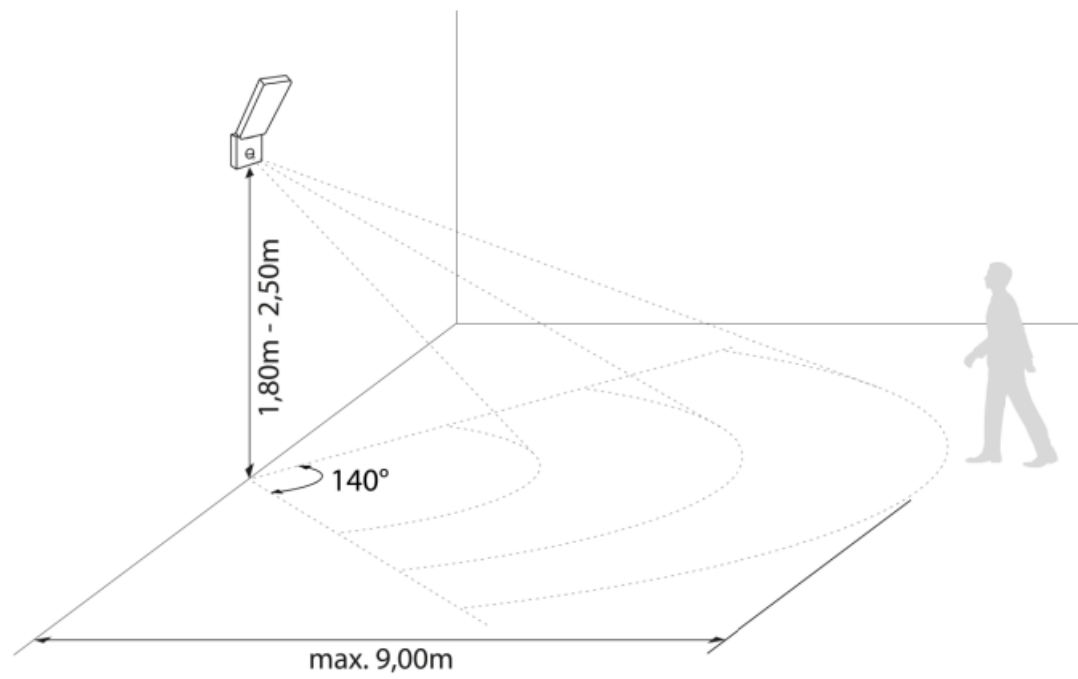
a)



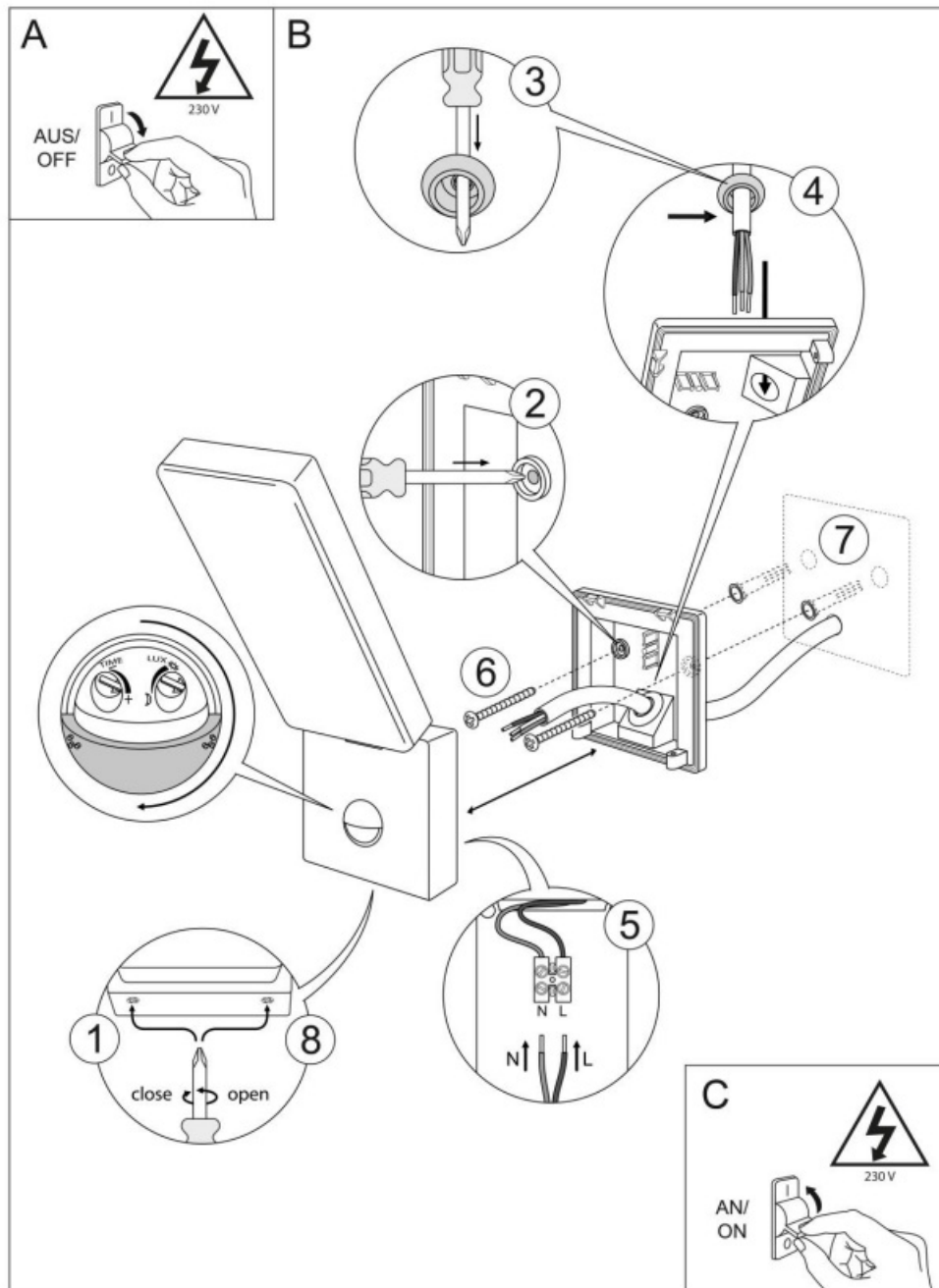
b)



**3:**



4:



### Manual

Thank you for choosing a product of SEBSON. Please read the instructions carefully and keep them for looking up before start-up this product. A long and failure-free operation can only be guaranteed if the installation and start-up is done properly. Before starting up this product, please check for external damage. In case of visible external damage we immediately dis-advise the start-up of this product! Please remove all packaging material of this product before the first start-up and check the content for completeness!

### Intended use:

This SEBSON outdoor light is suitable for indoor and outdoor installation. The integrated infrared motion detector detects the heat radiation from moving bodies and then switches the light on.

### Scope of delivery:

- 1 Outdoor light
- Screws for fixing (2 pieces)

- Dowels Ø 6mm (2 pieces)

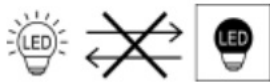
## General safety information:

**Danger:** The installation of this product may be done only by a qualified person according the valid regulations for electrical installation!

**Danger:** If the power cables are damaged or come into contact with wetness, immediately disconnect the product from the power supply and ensure that it cannot be switched on again!

**Danger of suffocation:** Please keep this product away from children and animals. The packaging contains small parts that can be swallowed!

**Caution:** Set up the light beam of the light never directly at people or animals to prevent fire damage or eyes damage and avoid looking directly into the light source!



An exchange of the built-in luminous in the light is not possible!

- The remodeling of this product is not allowed! The proper and safe functioning of the device can no longer be guaranteed if it is modified! In addition, this will invalidate the warranty claim!
- Do not connect a dimmer as this may cause a damage to the lamp.
- Do not cover the light with heat insulating materials! As a result of a strong heat development the LED can be damaged!
- The manufacture does not accept any responsibility for injuries or damage resulting from improper use of this product!
- Any other use than the description may result in damage to the product. So the dangers are such as electric shock, short circuit, fire etc.
- We reserve the right to make changes to the product, the packaging or the operating instructions as well as printing errors.
- This product is suited for indoor- and outdoor-use.
- Protect the product from external damage, heavy dirt, moisture and excessive heat!
- In order that the warranty claim does not expire please use only the supplied items. Repairs may only be done by an expert and only by using original spare parts!
- In commercial institutions, the accident prevention regulations of the professional trade association for electrical equipment and facilities must be adhered to.

## Instruction for installation (Fig.4):

**Danger:** Before installing please make sure that the circuit is interrupted! For installation, the work on the mains voltage is required. Please remove the associated mains fuse or deactivate the switch fuse! Check by using a voltage tester if the line is de-energized. Make sure that the current circuit will not closed during the installation!

**Danger:** The installation of this product may be done only by a qualified person according the valid regulations for electrical installation!

**Attention:** Before drilling the mounting holes, make sure that there are no gas, electricity or water pipes at the drilling location that could be damaged by this!

- Please observe the safety instructions and technical data before installing this product!
- Note on installation:  
L: Live wire (black or brown)

- N: Neutral conductor (blue or grey)
- For optimum range, select the mounting height recommended.

To ensure optimum sensitivity of the sensor, install the device in the room in such a way that the movements are transversely to the device. Movements that are directly to and from the device are less well detected. (see Fig. 2a):

The following environments or surfaces are not suitable for mounting, as they may impair the detection of thermal radiation (see Fig. 2b):

- Metal surfaces e.g. metal door frames
- In the immediate vicinity of electronic devices such as computers, monitors etc
- Heat sources e.g. radiant heaters, radiators or lamps
- In the vicinity of e.g. fume cupboards or fans
- Within the radiation range of luminaires (minimum distance from luminaires >50cm)

#### **Function of the motion sensor:**

The sensor integrated in this device detects heat radiation from moving bodies, e.g. from humans or animals. After the movement is detected, the light switches on. The detection of heat radiation can be limited by large furniture, glass panes or very high ambient temperatures of over 40°C, for example in summer. While movements in the detection area are detected by the sensor, the light remains switched on.

#### **Detection area (Fig 3):**

The detection range of the motion detector is approx. 9m and 140° (free area) at a mounting height of 1,8-2,5m on the wall. In closed rooms the detection distance can be lower, according to room layout.

#### **Sensitivity when switching (with regard to the ambient brightness):**



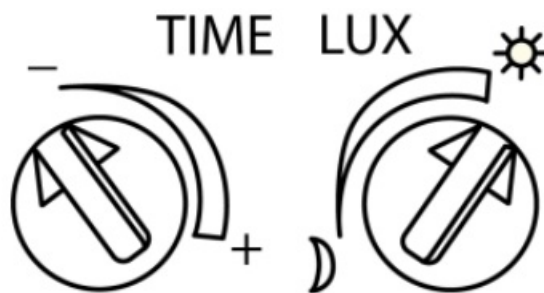
This setting control can be used to regulate the switch-on sensitivity of this unit depending on the ambient brightness (between 3 and 2.000 LUX).

#### **Time setting (switching off delay):**



The duration of the operating time can be set continuously from approx. 10s to 5min.

The timer is restarted if a movement from the sensor is detected before the set time has elapsed.

**Function test:**

Ensure that the motion detector is not obscured. Ensure that the coverage area is not restricted by items such as through large furniture. To set the detection range and the daylight test, turn the knobs to the positions shown. The motion detector is activated after a warm-up phase of approx. 30s. If no further movement takes place in the sensing area of the sensor, the sensor switches off.

**Technical Data:**

Operating voltage:	220-240V AC 50/ 60Hz
Nominal wattage:	15W
Nominal luminous flux:	900lm
Rated color temperature:	5.800K
Electrical protection:	IP65
Protection class:	II
Ambient temperature:	-20° – +40°C
Humidity:	<93%

This product contains a light source of energy efficiency class G.

**Possibilities of adjustments:**

Detection area:	Max.9m (<24°C)/ 140°
Sensitivity when switching (with regard to the ambient brightness):	<3-2.000LUX
Time setting (switching off delay):	Min. 10s +/- 3s – Max. 5min +/-1min

**Disposal note:**

This product may not be disposed of with household waste. At the end of its useful life, the product must be returned to a point of acceptance for the recycling of electric and electronic device. Please ask your local municipality for the point of acceptance! As the devices contain valuable recyclable materials, they should be sent for recycling, in order not to harm the environment or human health from uncontrolled waste disposal.

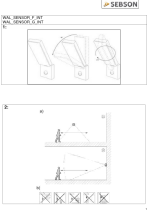
**Cleaning:**

Danger: Before start cleaning the product interrupt the current circuit by switching off the circuit breaker or unscrew the fuse! Use a slightly moistened cloth for cleaning. In order not to damage the product, it is essential to

avoid water penetrating into the housing! Never clean the device under running water! Do not use solvent-containing cleaner for cleaning.

**Address : SEBSON**  
**Sebastian Sonntag**  
**Gernotstr.17**  
**44319 Dortmund Germany**  
[support@sebson.de](mailto:support@sebson.de)  
**VAT-Nº: GB179436663**  
**WEEE-Reg.-ID.: 500617**

## Documents / Resources

	<p><a href="#">SEBSON WAL_SENSOR_F_INT Wall Light With Motion Detector 15W</a> [pdf] Instructions WAL_SENSOR_F_INT Wall Light With Motion Detector 15W, WAL_SENSOR_F_INT, Wall Light With Motion Detector 15W, Light With Motion Detector 15W, Motion Detector 15W</p>
---	--

Manuals+.