


# SEBSON SET\_6\_UNDER LED Lamp User Manual

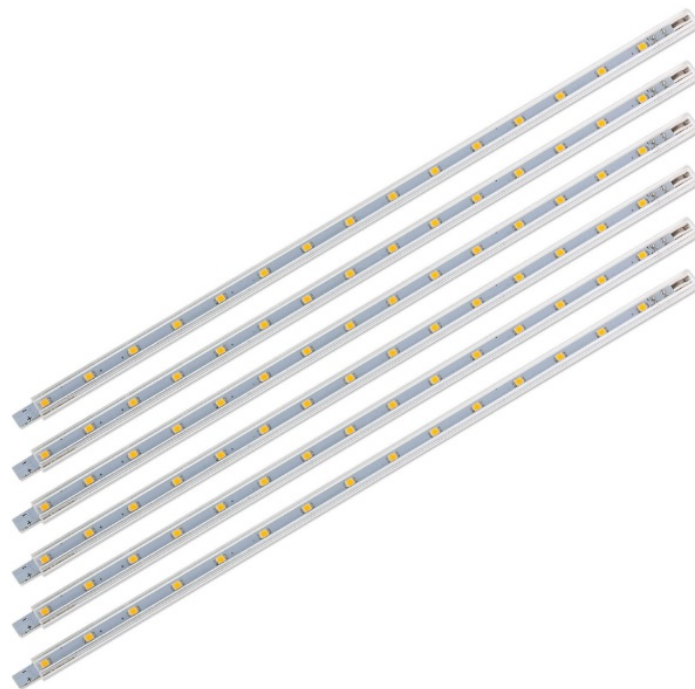
[Home](#) » [SEBSON](#) » SEBSON SET\_6\_UNDER LED Lamp User Manual 

## Contents

- 1 SEBSON SET\_6\_UNDER LED Lamp
- 2 INSIDE BOX
- 3 INSTALLATION
- 4 Scope of delivery
- 5 General safety information
- 6 Notes on commissioning
- 7 Technical Data
- 8 Cleaning
- 9 Documents / Resources
- 10 Related Posts

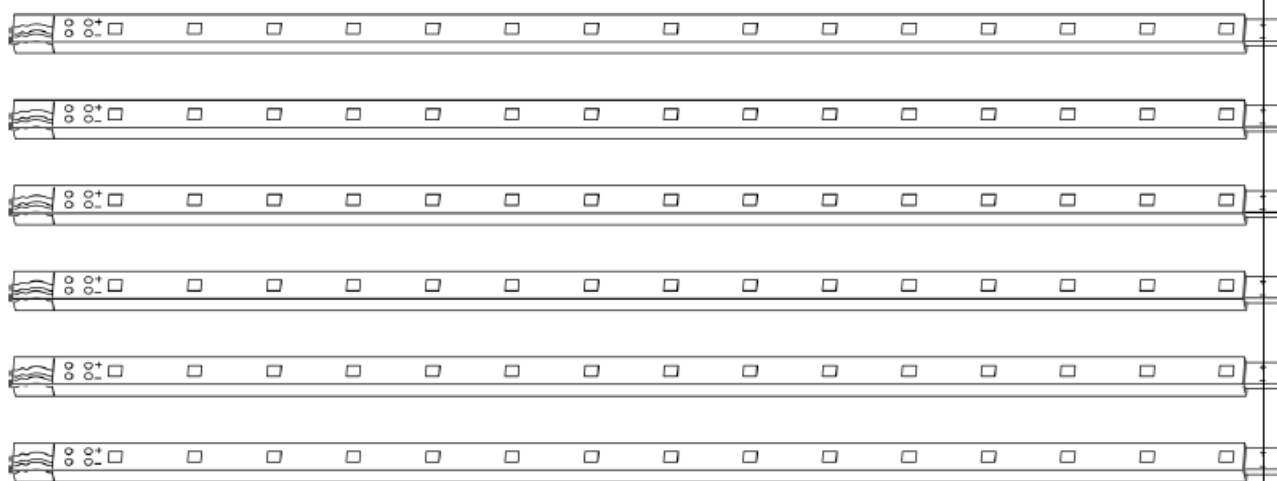
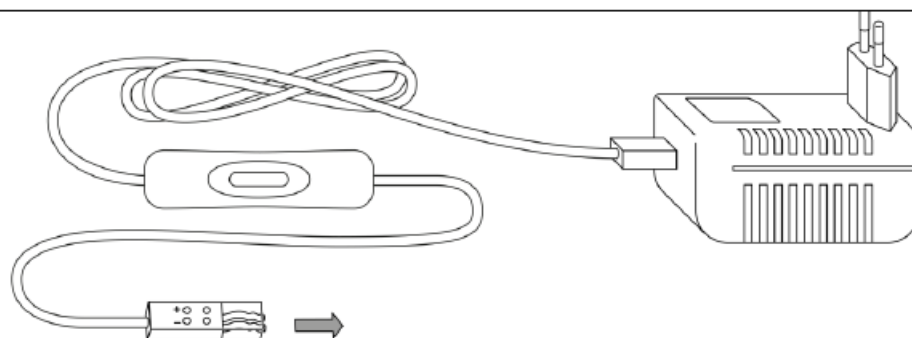


**SEBSON SET\_6\_UNDER LED Lamp**

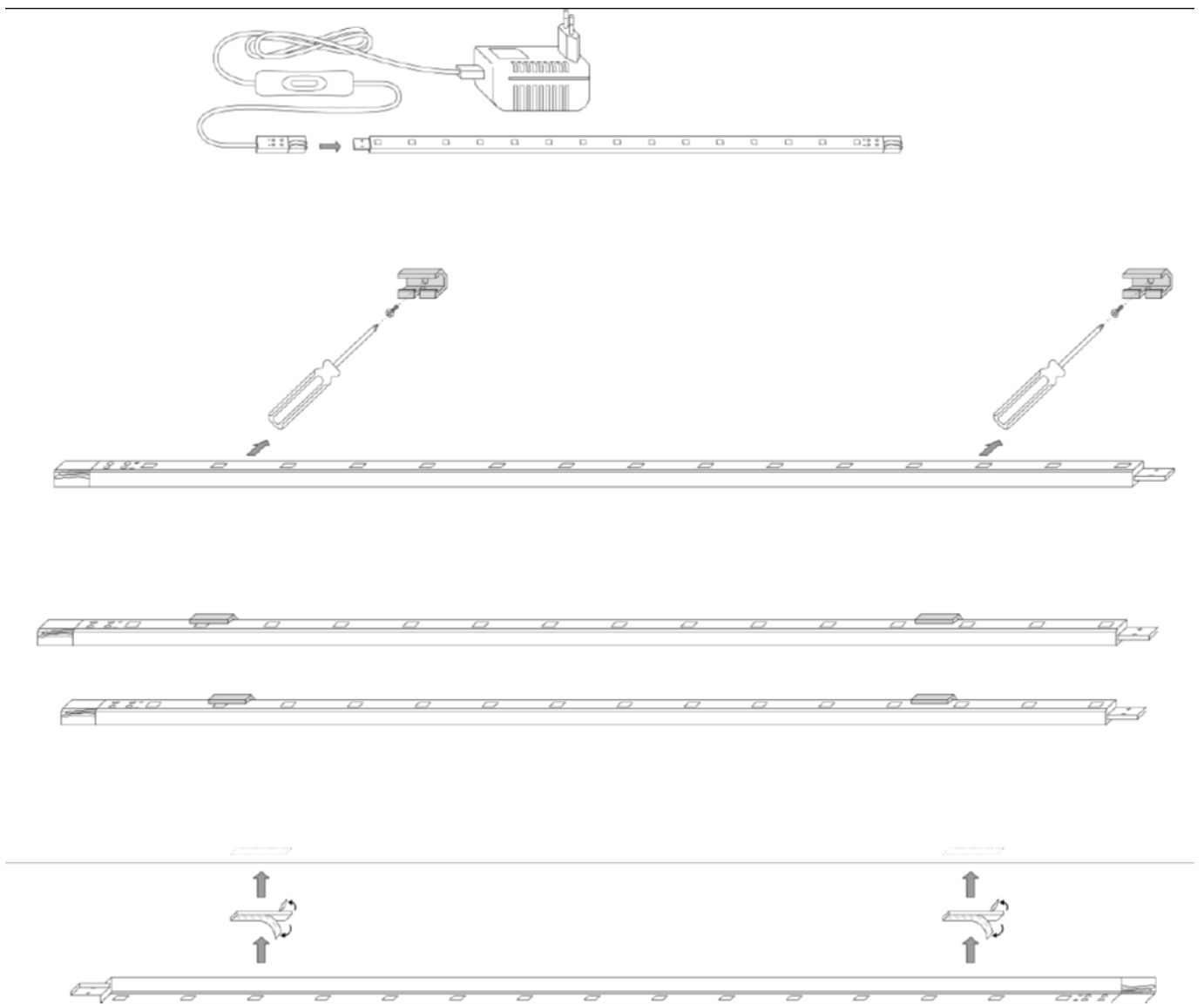


## INSIDE BOX

SET\_6\_UNDER



## INSTALLATION



Thank you for choosing a product of SEBSON. Read the instructions carefully and keep them for looking up before start-up this product. A long and failure-free operation can only be guaranteed if the installation and start-up is done properly. Before starting up this product, please check for external damage. In case of visible external damage we immediately dis-advise the start-up of this product! Please remove all packaging material of this product before the first start-up and check the content for completeness!

**Intended use:**

This lamp of the brand SEBSON can be mounted on different furniture like cupboards, shelves or even on the wall.

**Scope of delivery**

- 6 LED Under Cabinet Light Bars
- 1 power plug (12V)
- long connection cable (2 pieces)
- short connection cable (5 pieces)
- Screw holder for fixing (12 pieces)
- Adhesive strip ( 12 pieces)
- end caps (6 pieces)

## General safety information

**Danger:** In case of damages or contact with water turn off this product immediately without tension and make sure that a restart is no longer possible!

Danger of suffocation: Keep this product away from children and animals! The packaging contains small parts that can be swallowed!

**Caution:** Set up the light beam of the light never directly at people or animals to prevent fire damage or eyes damage and avoid looking directly into the light source!

- An exchange of the built-in luminous in the light is not possible!
- The remodeling of this product is not allowed! The proper and safe functioning of the device can no longer be guaranteed if it is modified! In addition, this will invalidate the warranty claim!
- Do not connect a dimmer as this may cause a damage to the lamp. As a result of a strong heat development the LED can be damaged!
- Do not cover the light with heat insulating materials! As a result of a strong heat development the LED can be damaged!
- The manufacture does not accept any responsibility for injuries or damage resulting from improper use of this product!
- Any other use than the description may result in damage to the product. So the dangers are such as electric shock, short circuit, fire etc.
- We reserve the right to make changes to the product, the packaging or the operating instructions as well as printing errors.
- Protect the product from external damage, heavy dirt, moisture and excessive heat!
- In order that the warranty claim does not expire please use only the supplied items. Repairs may only be done by an expert and only by using original spare parts!
- In commercial institutions, the accident prevention regulations of the professional trade association for electrical equipment and facilities must be adhered to.

## Notes on commissioning

**Caution:** Do not put the product into operation until all cables are connected together! Make sure that the mains voltage of your house line corresponds to the specifications in the "Technical Data"!

- This product is only suited for indoor-use and not for outdoor-use!
- For mounting the lamp, choose a stable mounting surface that can support the weight of the lamp. The manufacturer is not liable for damage caused by the use of an unsuitable mounting surface!
- Install the lamp on a dry and non-conductive surface!
- This product is suitable for mounting on normally flammable surfaces!
- Plan a minimum distance of 50cm between the illuminated area and the lamp.
- To prevent damage to the cables, they must not be strongly bent, pulled or twisted during commissioning!

## Technical Data

<b>Technical Data:</b>	
<b>Operating voltage:</b>	12V DC
<b>Nominal wattage:</b>	6 x 2W
<b>Nominal luminous flux:</b>	6 x 170lm
<b>Rated color temperature:</b>	3.000K
<b>Electrical protection:</b>	IP20
<b>Protection class:</b>	II
<b>Nominal- / rated lamp life time:</b>	>25.000h
<b>Switching cycles:</b>	>15.000
This product contains a light source of energy efficiency class G.	

### Disposal note:

This product may not be disposed of with household waste. At the end of its useful life, the product must be returned to a point of acceptance for the recycling of electric and electronic device. Please ask your local municipality for the point of acceptance! As the devices contain valuable recyclable materials, they should be sent for recycling, in order not to harm the environment or human health from uncontrolled waste disposal.

### Cleaning

**Danger :** Before cleaning, disconnect the product from the power supply by pulling the power plug out of the socket! Use a slightly moistened cloth for cleaning. In order not to damage the product, it is essential to avoid water penetrating into the housing! Never clean the device under running water! Do not use solvent-containing cleaner for cleaning. Do not use solvent-containing cleaner for cleaning!

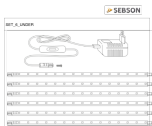
SEBSON

Sebastian Sonntag Gernotstr.17

44319 Dortmund Germany

[support@sebson.de](mailto:support@sebson.de) VAT-№: GB179436663 WEEE-Reg.-ID.: 500617

### Documents / Resources

	<p><a href="#">SEBSON SET_6_UNDER LED Lamp</a> [pdf] User Manual SET_6_UNDER, LED Lamp, SET_6_UNDER LED Lamp, Lamp</p>
---	--