

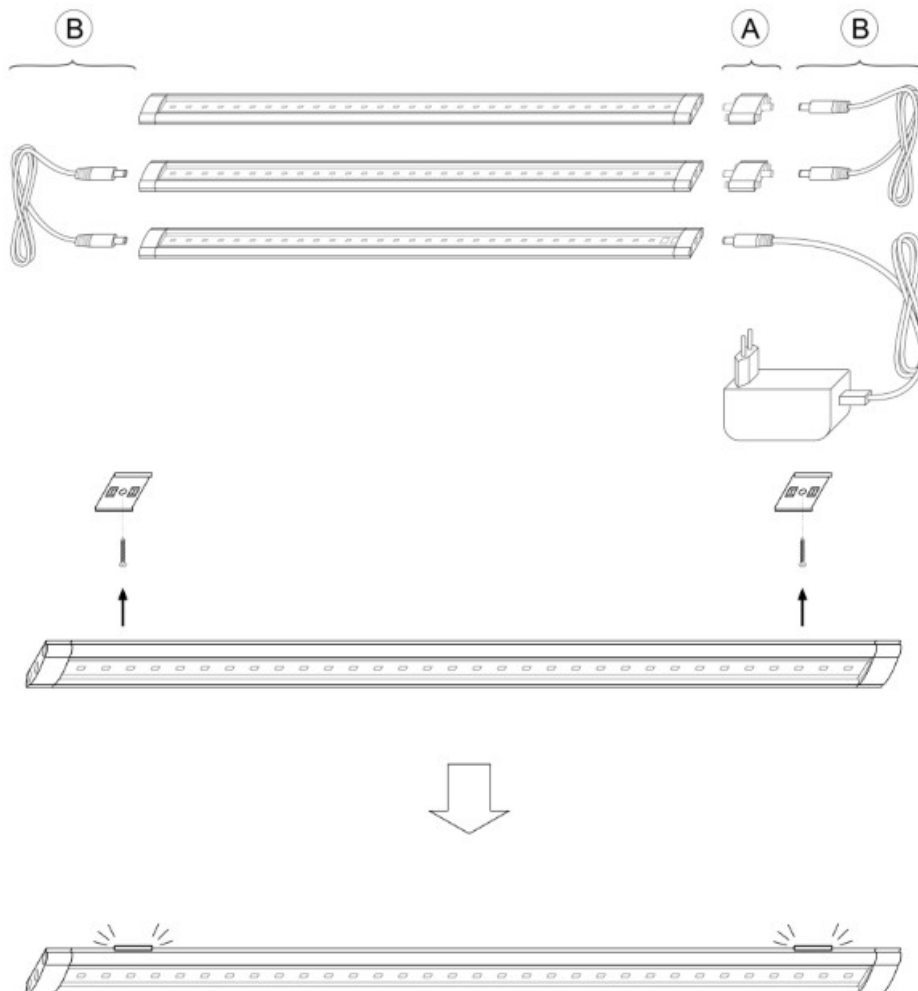


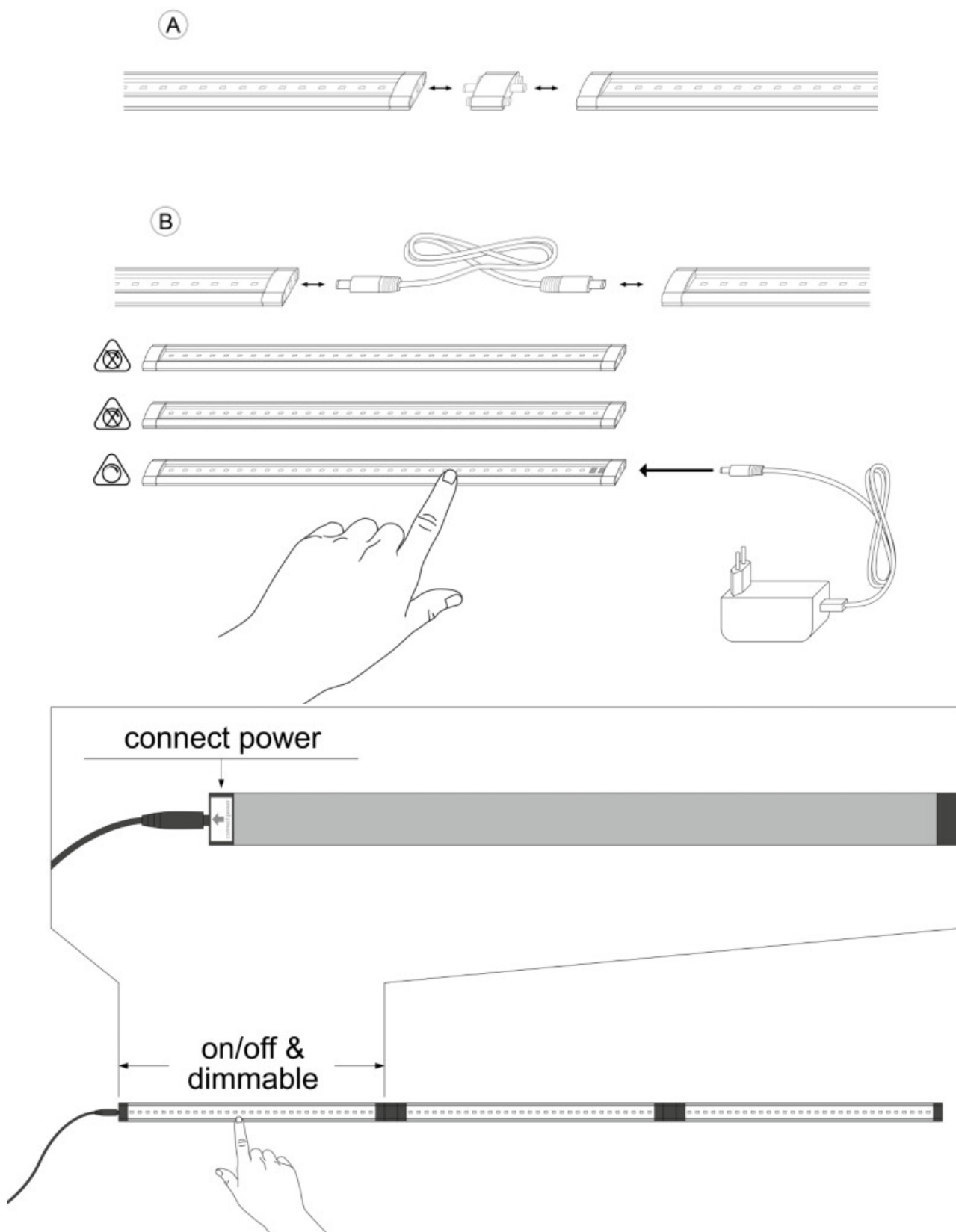
SEBSON B01LYFWTWO Set 3 Under Dim Installation Guide

[Home](#) » [SEBSON](#) » SEBSON B01LYFWTWO Set 3 Under Dim Installation Guide 



SET_3_UNDER_DIM Installation Guide





UST-IDNº:DE246981805

WEEE-Reg.-Nº: DE 78960174

Thank you for choosing the product of SEASON. Read the instructions carefully and keep them for looking up before start-up this product. A long and failure-free operation can only be guaranteed if the installation and start-up is done properly. Before starting up this product, please check for external damage. In case of visible external damage, we immediately dis-advise the start-up of this product! Please remove all packaging material of this product before the first start-up and check the content for completeness!

Intended use:

This lamp of the brand SEBSON can be mounted on different furniture like cupboards, shelves or even on the wall.

Scope of delivery:

- 3 LED Under Cabinet Light Bars
- 1 power plug (12V)
- Connection cable (2 pieces)
- Connection plug (2 pieces)
- Screw holder for fixing (6 pieces)

Contents

- [1 General safety information](#)
- [2 Notes on commissioning](#)
- [3 Technical Data](#)
- [4 Cleaning](#)
- [5 Documents / Resources](#)
- [6 Related Posts](#)



General safety information

Danger: In case of damages or contact with water turn off this product immediately without tension and make sure that a restart is no longer possible!

The danger of suffocation: Keep this product away from children and animals! The packaging contains small parts that can be swallowed!

Caution: Set up the light beam of the light never directly at people or animals to prevent fire damage or eyes damage and avoid looking directly into the light source!



- An exchange of the built-in luminous in the light is not possible!
- The remodeling of this product is not allowed! The proper and safe functioning of the device can no longer be guaranteed if it is modified! In addition, this will invalidate the warranty claim!
- Do not connect a dimmer as this may cause damage to the lamp. As a result of strong heat development, the LED can be damaged!
- Do not cover the light with heat-insulating materials! As a result of strong heat development, the LED can be damaged!
- The manufacturer does not accept any responsibility for injuries or damage resulting from improper use of this product!
- Any other use than the description may result in damage to the product. So the dangers are such as electric shock, short circuits, fire, etc.
- We reserve the right to make changes to the product, the packaging or the operating instructions as well as printing errors.
- Protect the product from external damage, heavy dirt, moisture, and excessive heat!
- In order that the warranty claim does not expire please use only the supplied items. Repairs may only be done

by an expert and only by using original spare parts!

- In commercial institutions, the accident prevention regulations of the professional trade association for electrical equipment and facilities must be adhered to.

Notes on commissioning

Caution: Do not put the product into operation until all cables and bars are connected together! If you connect the power supply unit beforehand, the housing can become electrostatically charged due to its metallic nature. This can cause an electrostatic discharge when touching the housing, but this discharge is so small that there is no danger to life! Make sure that the mains voltage of your house line corresponds to the specifications in the "Technical Data"!

- This product is only suited for indoor use and not for outdoor use!
- For mounting the lamp, choose a stable mounting surface that can support the weight of the lamp. The manufacturer is not liable for damage caused by the use of an unsuitable mounting surface!
- Install the lamp on a dry and non-conductive surface!
- This product is suitable for mounting on normally flammable surfaces!
- Plan a minimum distance of 50cm between the illuminated area and the lamp.
- To prevent damage to the cables, they must not be strongly bent, pulled or twisted during commissioning!

Technical Data

Operating voltage:	12V DC
Nominal wattage:	3 x 3,5W
Nominal luminous flux:	3 x 250lm
Rated color temperature:	3.000K
Beam angle:	90°
Electrical protection:	IP20
Protection class:	III
Nominal- / rated lamp life time:	>25.000h
Switching cycles:	>15.000

This product contains a light source of energy efficiency class G.

Disposal note:



This product may not be disposed of with household waste. At the end of its useful life, the product must be returned to a point of acceptance for the recycling of electric and electronic devices. Please ask your local municipality for the point of acceptance! As the devices contain valuable recyclable materials, they should be sent for recycling, in order not to harm the environment or human health from uncontrolled waste disposal.

Cleaning

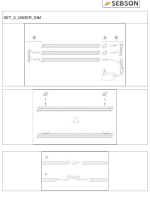
Danger: Before cleaning, disconnect the product from the power supply by pulling the power plug out of the socket!

Use a slightly moistened cloth for cleaning. In order not to damage the product, it is essential to avoid water

penetrating into the housing! Never clean the device under running water! Do not use solvent-containing cleaner for cleaning. Do not use solvent-containing cleaner for cleaning!

SEBSON
Sebastian Sonntag
Gernotstr.17
44319 Dortmund
Germany
support@sebson.de
VAT-No: GB179436663
WEEE-Reg.-ID.: 500617

Documents / Resources

	<p>SEBSON B01LYFWTWO Set 3 Under Dim [pdf] Installation Guide B01LYFWTWO Set 3 Under Dim, B01LYFWTWO, Set 3 Under Dim</p>
-----------------------------------------------------------------------------------	-----------------------------------------------------------------------------------------------------------------------------------------------