



SEAWARD PATGuard 3 eManager Software User Guide

[Home](#) » [SEAWARD](#) » SEAWARD PATGuard 3 eManager Software User Guide 

Contents

- 1 SEAWARD PATGuard 3 eManager Software
- 2 Product Information
- 3 Product Usage Instructions
- 4 FAQs
- 5 Close E-Manager Before Reinstalling
- 6 Documents / Resources
 - 6.1 References



SEAWARD PATGuard 3 eManager Software



Product Information

- **Product Name:** PATGuard 3
- **Manufacturer:** Seaward
- **Address:** 15-18 Bracken Hill, South West Industrial Estate, Peterlee, County Durham, SR8 2SW, United Kingdom
- **Contact:** t: +44 (0) 191 586 3511 | f: +44 (0) 191 586 0227 |
- **e:** sales@seaward.com
- **Website:** seaward.com

Specifications

- Compatible with E Manager software
- Requires closing E Manager before reinstalling PATGuard 3

Product Usage Instructions

How to Close E Manager before Reinstalling PATGuard 3

1. Open PATGuard 3.
2. Click “Ok” when prompted.
3. In PATGuard 3, go to the “Help” tab located at the top.
4. Click on “Check for updates”.
5. Press Ctrl + Alt + Delete to open the Start Task Manager.
6. Click on the “Processes” tab.
7. Scroll down the list and click on ‘eManager3.exe*32’.
8. Click “End Process” to close eManager.

FAQs

- **Q: Why do I need to close E Manager before reinstalling PATGuard 3?**

A: Closing E Manager ensures that the software fully closes on your computer, allowing for a correct installation of PATGuard 3.

- **Q: How do I contact Seaward for more help?**

A: You can contact Seaward by visiting their website seaward.com/login/enquire/ and filling out the contact form.

Close E-Manager Before Reinstalling

How to close eManager before reinstalling PATGuard 3?

PATGuard 3 requires you to Close “E Manager” before reinstalling the software. This will allow the software to fully close on your computer allowing the software to be installed correctly. Follow the steps below to close E manager.

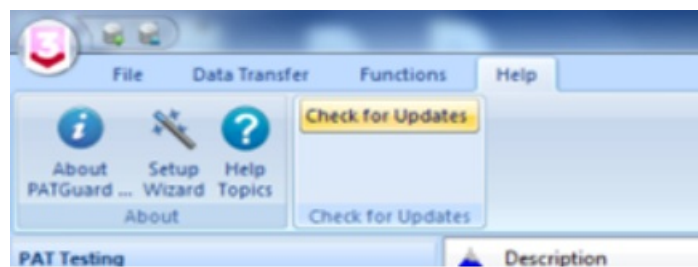
1. Open PATGuard 3 and press “Ok”.



2. Once PATGuard 3 is opened, go to the "help" tab which is located at the top.



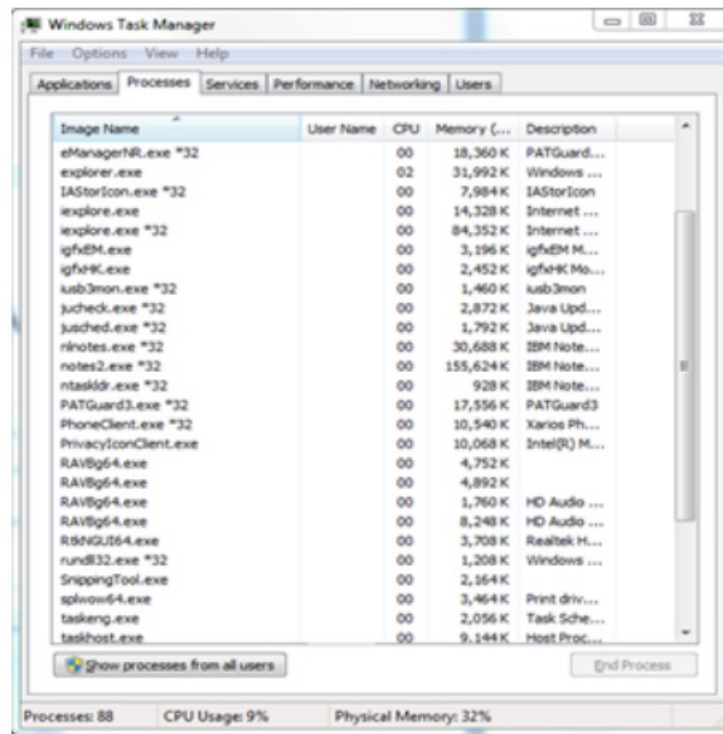
3. Click on "Check for updates".



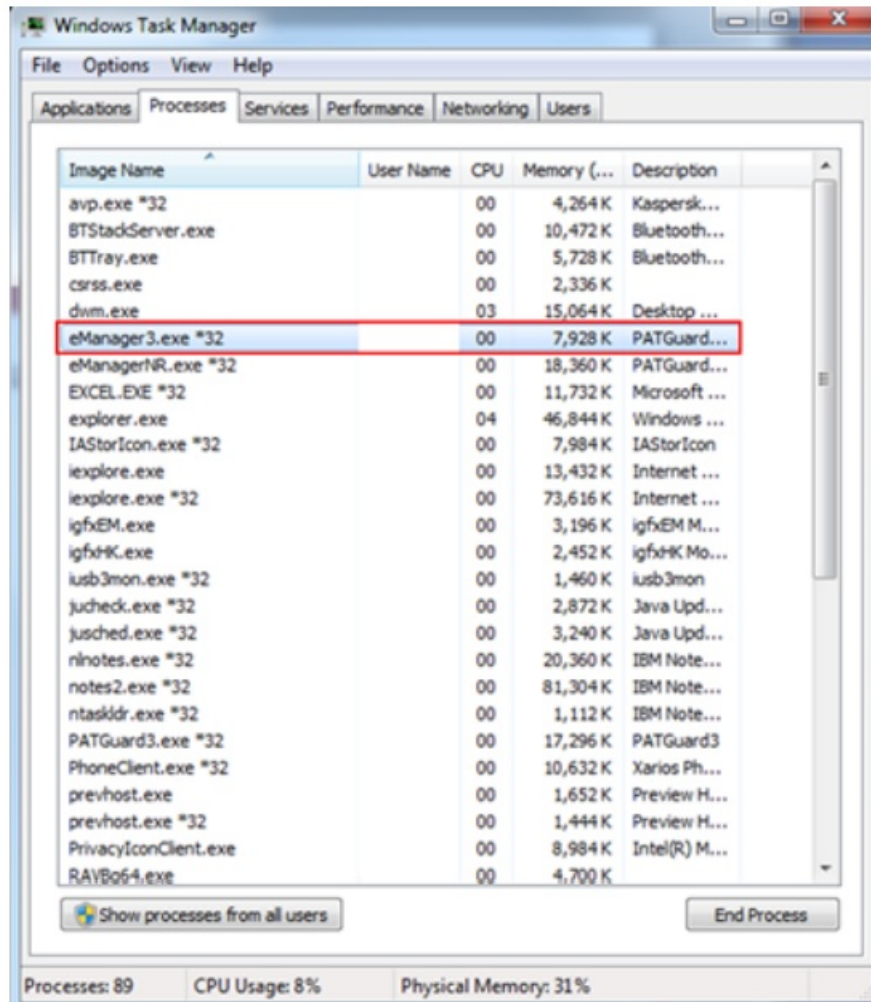
4. Press "Ctrl, Alt + Delete" to open up the "Start Task Manager".



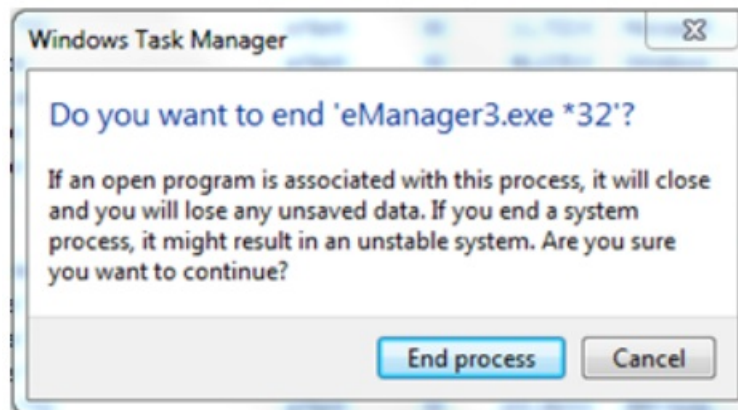
5. Click on the "Processes" tab.



6. Scroll down the list and click on "eManager3.exe*32".






7. Click "End Process" to end eManager.




If you require more help, please contact us at <https://www.seaward.com/login/enquire/>.

15-18 Bracken Hill, South West Industrial Estate, Peterlee, County Durham, SR8 2SW, United Kingdom
t: +44 (0) 191 586 3511 | f: +44 (0) 191 586 0227 | e: sales@seaward.com
seaward.com

Documents / Resources

 How to close eManager before re-installing PATGuard 3 <small>Before installing PATGuard 3, you must close eManager. If eManager is not closed, the installation will fail. To close eManager, click on the 'eManager' icon in the system tray and select 'Exit'.</small>  	SEAWARD PATGuard 3 eManager Software [pdf] User Guide PATGuard 3 eManager Software, PATGuard 3, eManager Software, Software
---	--

References

-  [Electrical Safety Test Equipment Manufacturers | Seaward](#)
- [User Manual](#)