



SEALEY SPL01 Fast Lock Tie Down System Instruction Manual

[Home](#) » [SEALEY](#) » SEALEY SPL01 Fast Lock Tie Down System Instruction Manual 

SEALEY SPL01 Fast Lock Tie Down System Instruction Manual



Thank you for purchasing a Sealey product. Manufactured to a high standard, this product will, if used according to these instructions, and properly maintained, give you years of trouble free performance.

IMPORTANT: PLEASE READ THESE INSTRUCTIONS CAREFULLY. NOTE THE SAFE OPERATIONAL REQUIREMENTS, WARNINGS & CAUTIONS. USE THE PRODUCT CORRECTLY AND WITH CARE FOR THE PURPOSE FOR WHICH IT IS INTENDED. FAILURE TO DO SO MAY CAUSE DAMAGE AND/OR PERSONAL INJURY AND WILL INVALIDATE THE WARRANTY. KEEP THESE INSTRUCTIONS SAFE FOR FUTURE USE.

- Refer to instructions



- Wear protective gloves



- Wear safety footwear



- Wear protective clothing



Contents

1 SAFETY

2 INTRODUCTION

3 SPECIFICATION

4 INSTALLATION

5 OPERATION

6 MAINTENANCE

7 ENVIRONMENT

PROTECTION

8 Documents / Resources

8.1 References

SAFETY

WARNING! The warnings, cautions and instructions referred to in this manual cannot cover all possible conditions and situations that may occur. It must be understood that common sense and caution are factors which cannot be built into this product, but must be applied by the operator. It is the operator's responsibility to secure the load. Check with vehicle manufacturer's Manual before installing.

- **WARNING!** Before use, ensure that there is nothing attached to the front forks or the fairing of the motorcycle that will foul the unit.
- Proper use and installation of this product is critical to safety. Improper use may result in personal or property damage which is not covered by the warranty.

- Proper care and maintenance of the unit is critical to safety.
- Keep the unit clean for the best and safest performance.
- Maintain correct balance and footing whilst positioning the motorcycle in the unit.
- Ensure that the floor is not slippery and wear non-slip shoes.
- Ensure that the motorcycle is adequately secured to the unit if to be used for transportation purposes.
- Keep children and unauthorized persons away from work area.
- Inspect unit before each use. Check fasteners for tightness, replace any worn or damaged parts.
- Before removing a motorcycle from the unit, ensure that there are no obstructions or persons in the path of the motorcycle.
 - **DO NOT** attempt to use a unit that is damaged in any way.
 - **DO NOT** modify the unit in any way.
 - **DO NOT** use the unit for a purpose it is not designed to perform.
 - **DO NOT** operate the unit if it is damaged.
 - **DO NOT** use the unit when you are tired or under the influence of alcohol, drugs or intoxicating medication.
 - **DO NOT** allow untrained persons to use the unit.

INTRODUCTION

Securely holds your motocross bike on to a trailer or van, with the Fast Lock system, no ratchet straps or wheel chock required.

Provided with mounting plates and quick release latches, allowing for fast installation and removal of the clamp, freeing your vehicle for other uses. Each mounting plate has a D-ring creating additional anchor points to the trailer floor.

SPECIFICATION

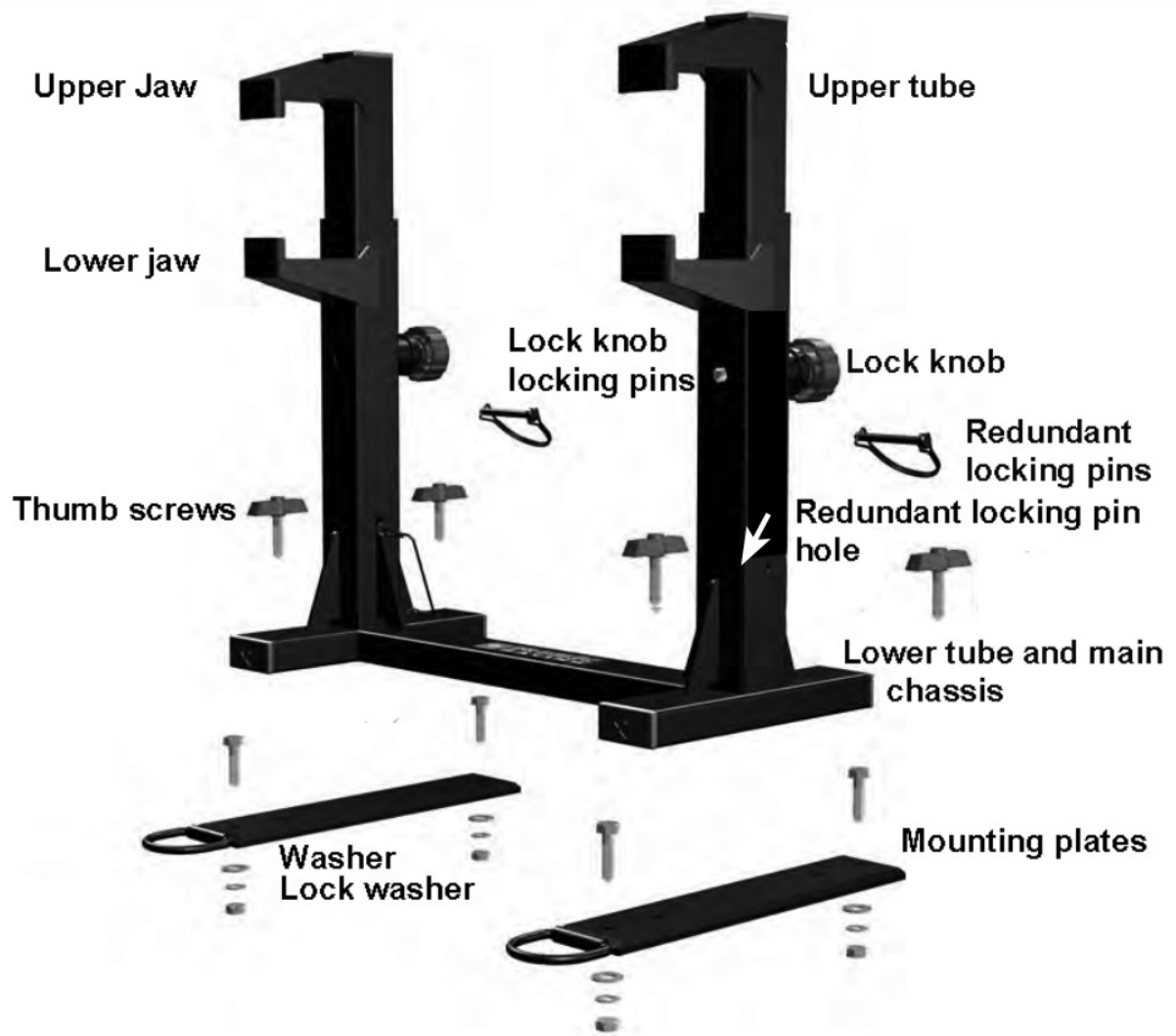
Model No : SPL01

Foot peg width from tip to tip : 18"-20" (455mm-510mm), foot peg height: 15"-17.5" (380mm-445mm)).

The SPL01 is designed to fit 125 – 500cc bikes with similar geometry (Foot peg width from tip to tip: 18"-20"(455mm-510mm), foot peg height: 12.5"-14.75" (320mm-375mm)). NOTE: Often trail bikes WITHOUT a folding shift lever will not fit.

INSTALLATION

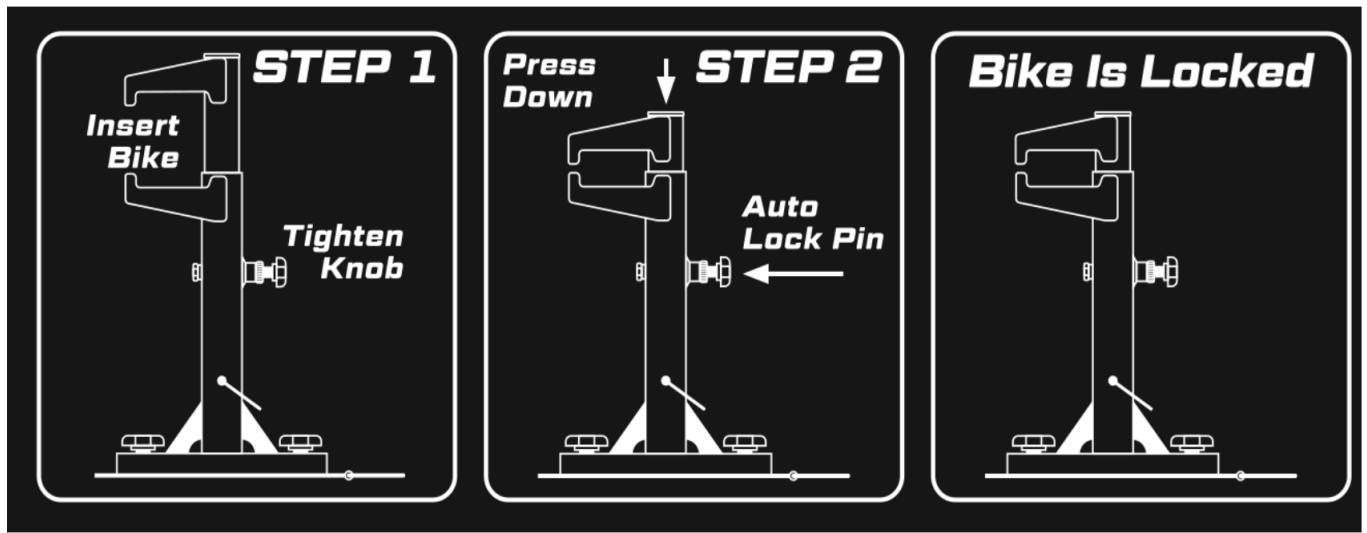
INSTALLATION FOR TRANSPORTATION



1. When used for the transport of motorcycles, the base must be firmly bolted to the floor of a trailer or van.
2. If mounting to a trailer or other vehicle, ensure that the floor is strong enough to take the weight of the motorcycle/s plus the tie downs.
3. The tie down is secured to the base by means of the four wing bolts and spring washers. When using the chock for transportation purposes, the front wheel of the motorcycle must be securely strapped to the tie down utilising the strap gap.
4. For additional security, consideration should also be given to securing the rear wheel as well.

OPERATION

1. To operate the unit, rotate the knobs into the lock position and simply roll or ride your bike into the trailer until your foot pegs hit the open jaws of the SPL01.
2. Press down on the upper jaws and they will automatically lock into place.
3. Tighten the locking knob
4. To release your bike, simply rotate the knobs into the release position and step on the top jaws. This will automatically release the jaws and free your motorcycle.
5. For additional safety, insert the attached locking pins prior to transport. You can replace the locking pins with padlocks for added security and a theft deterrent.



STEP 1 Rotate the knobs into the lock position and simply roll or ride your bike into the trailer until your foot pegs hit the open jaws of the stand.

STEP 2 Then step on the upper jaws and they will automatically lock into place.

STEP 3 For additional safety, insert the attached locking pins prior to transport. You can replace the locking pins with padlocks for added security and theft deterrent.

STEP 4 To release your bike, simply rotate the knobs into the release position and step on the top jaws. This will automatically release the jaws and free your motorcycle.

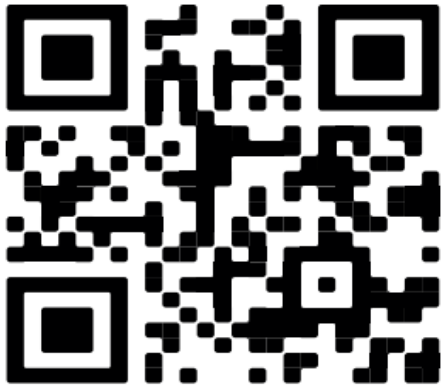
MAINTENANCE

1. When the jaws are not in use, leave it in the open position.
2. Keep the jaws clean and wipe off any oil or grease.
3. Before each use check all parts. If any part of the tie down is damaged or defective, remove the tie down from service and take the necessary action to remedy the problem.

ENVIRONMENT PROTECTION



Recycle unwanted materials instead of disposing of them as waste. All tools, accessories and packaging should be sorted, taken to a recycling centre and disposed of in a manner which is compatible with the environment. When the product becomes completely unserviceable and requires disposal, drain any fluids (if applicable) into approved containers and dispose of the product and fluids according to local regulations.



REGISTER YOUR PURCHASE HERE

Note: It is our policy to continually improve products and as such we reserve the right to alter data, specifications and component parts without prior notice.

Important: No Liability is accepted for incorrect use of this product.

Warranty: Guarantee is 12 months from purchase date, proof of which is required for any claim.

Sealey Group, Kempson Way, Suffolk Business Park, Bury St Edmunds, Suffolk. IP32 7AR



01284 757500



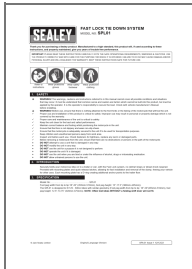
sales@sealey.co.uk



www.sealey.co.uk



Documents / Resources



[SEALEY SPL01 Fast Lock Tie Down System](#) [pdf] Instruction Manual
SPL01 Fast Lock Tie Down System, SPL01, Fast Lock Tie Down System, Lock Tie Down System, Tie Down System, Down System, System

References

- [Sealey - Leading Professional Tool & Workshop Equipment Supplier](#)
- [User Manual](#)

