

SEALEY FWB1V3 Folding Workbench 235MM Capacity



SEALEY FWB1V3 Folding Workbench 235MM Capacity Instruction Manual

[Home](#) » [SEALEY](#) » SEALEY FWB1V3 Folding Workbench 235MM Capacity Instruction Manual 

Contents

- [1 SEALEY FWB1V3 Folding Workbench 235MM Capacity](#)
- [2 SAFETY](#)
- [3 INTRODUCTION](#)
- [4 Specifications](#)
- [5 CONTENTS](#)
- [6 ASSEMBLY](#)
- [7 Frequently Asked Questions](#)
- [8 Documents / Resources](#)
 - [8.1 References](#)



SEALEY FWB1V3 Folding Workbench 235MM Capacity



SAFETY

- Maintain the workbench in good condition. Replace or repair damaged parts. Use recommended parts only. Unauthorised parts may be dangerous and will invalidate the warranty.
- Keep the workbench clean for best and safest performance and check moving parts alignment regularly.
- Locate the workbench in a suitable working area. Keep area clean and tidy and ensure there is adequate lighting.
- Ensure the workpiece is correctly held or secured before commencing work.
- Ensure that any workpiece which extends beyond the bench is adequately supported.
- Maintain correct balance and footing. Ensure the floor is not slippery and wear non-slip shoes.
- DO NOT use the workbench for any purpose other than that for which it is designed.
- DO NOT get the workbench wet or use in wet weather conditions, and DO NOT expose the workbench to excessive heat.
- DO NOT operate the workbench if any parts are missing as this may cause failure and/or personal injury.
- DO NOT stand on the top of workbench, or use it as standing platform or to support a platform. The workbench is for clamping items only.
- When not in use store in a safe, dry, child proof area and ensure it will not topple over.

INTRODUCTION

Hard-wearing MDF top with pre-drilled jaw grip anchorages. Features vice capability for gripping work whilst sawing, planing and drilling. Bench legs fold flat for easy storage and incorporate tool storage slots. Suitable for sawing, drilling, planing and sanding operations.

Specifications

- Model No: FWB1.V3
- Clamp Capacity: 235mm
- Folded Dimensions (W x D x H): 605 x 140 x 895mm
- Unfolded Dimensions (W x D x H): 605 x 630 x 750mm

CONTENTS

No.	Description	Qty.	No.	Description	Qty.
1	Worktops	2	8	Wood screws 4.8x1.6mm	16
2	Slide bases	2	9	Screws (domehead) M6x1.0x3.7 mm	8
3	Hex bolts	4	10	Nuts M6x1mm	8
4	Crossbars	2	11	Nuts M6x1.2mm	4
5	Leg frames	2	12	Chocks	4
6	Plastic feet	4	13	Washers Ø13x6x1.2	8
7	Washers Ø16 x Ø8x1.2	8			

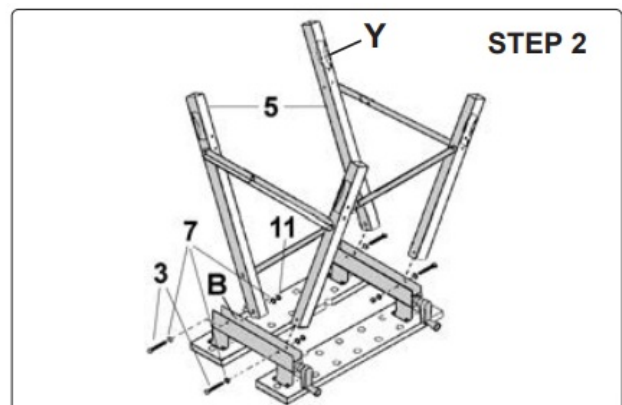
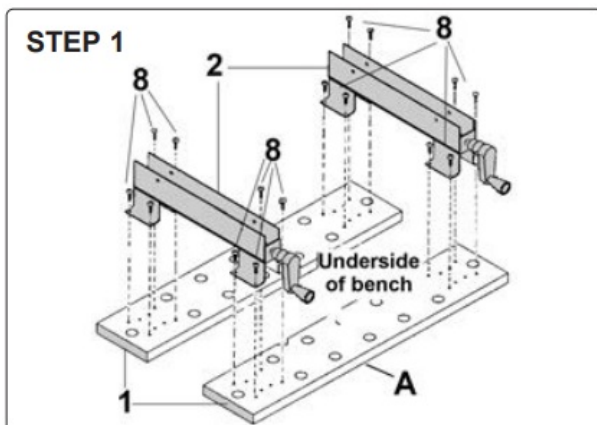
ASSEMBLY

Unpack the product and check contents to ensure no parts are damaged. Should there be any damaged or missing parts contact your supplier immediately. Follow the step by step illustrations to assemble your bench.

- Lay the wooden worktop/jaws (1) upside down on a surface that will not scratch or cause damage. Screw the slide bases (2) to the jaws using wood screws (8) ensuring that the jaw angle and ruler guides are on the same side as the vice handles at point “A”.

Note: If not already assembled, push handles onto vice screw ends and secure with pins.

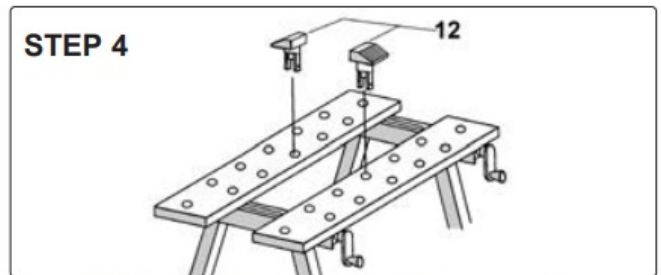
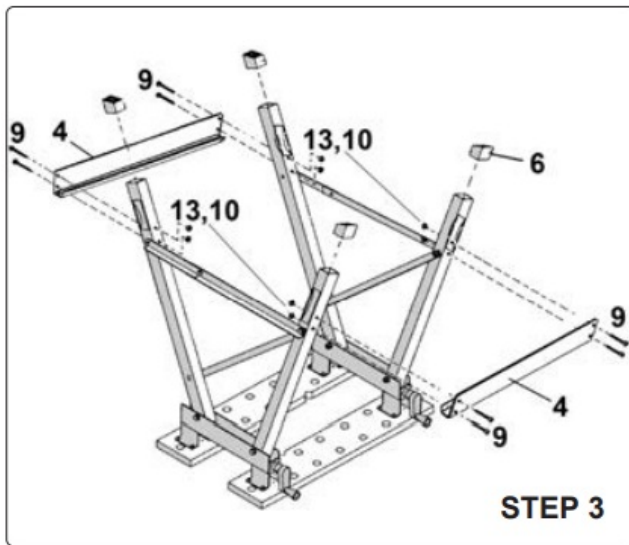
- Open the leg frames (5) and align with holes on the inside of the vice arms at points “B” ensuring the curvatures on the lower part of the legs “Y” point outward. Insert bolts (3) from the outside of the vice arm with washers (7) and secure with washers (7) and nuts (11) from the inside.



- Align the crossbars (4) with holes in legs and insert screws (9) from the outside and fix with washers (13) and nuts (10).

Push the plastic feet (6) onto the leg ends ensuring the longest side of the foot corresponds with the outer corner of the leg point.

- Fix chock (12) in suitable holes located in worktop as required.



Fix chock (12) in suitable holes located in worktop as required.

Parts support is available for this product. Please email sales@sealey.co.uk or telephone 01284 757500

ENVIRONMENT PROTECTION

Recycle unwanted materials instead of disposing of them as waste. All tools, accessories and packaging should be sorted, taken to a recycling centre and disposed of in a manner which is compatible with the environment. When the product becomes completely unserviceable and requires disposal, drain any fluids (if applicable) into approved containers and dispose of the product and fluids according to local regulations.

Note: It is our policy to continually improve products and as such we reserve the right to alter data, specifications and component parts without prior notice.

Important: No Liability is accepted for incorrect use of this product.

Warranty: Guarantee is 12 months from purchase date, proof of which is required for any claim.

Sealey Group, Kempson Way, Suffolk Business Park, Bury St Edmunds, Suffolk. IP32 7AR

01284 757500

01284 703534

sales@sealey.co.uk

www.sealey.co.uk

Frequently Asked Questions


Q: Can I use the workbench for purposes other than sawing, drilling, planing, and sanding?

A: No, it is recommended not to use the workbench for any purpose other than those for which it is designed to ensure safety and optimal performance.

Q: How should I store the workbench when not in use?

A: Store the workbench in a safe, dry area that is child-proof to prevent accidental toppling over.

Documents / Resources

	<p>SEALEY FWB1V3 Folding Workbench 235MM Capacity [pdf] Instruction Manual FWB1V3 Folding Workbench 235MM Capacity, Folding Workbench 235MM Capacity, Workbench 235MM Capacity, Capacity</p>
---	--

References

- [User Manual](#)

[Manuals+](#), [Privacy Policy](#)

This website is an independent publication and is neither affiliated with nor endorsed by any of the trademark owners. The "Bluetooth®" word mark and logos are registered trademarks owned by Bluetooth SIG, Inc. The "Wi-Fi®" word mark and logos are registered trademarks owned by the Wi-Fi Alliance. Any use of these marks on this website does not imply any affiliation with or endorsement.