


SEALEY AP6350.V3 Racking Unit



SEALEY AP6350.V3 Racking Unit Instruction Manual

[Home](#) » [SEALEY](#) » SEALEY AP6350.V3 Racking Unit Instruction Manual 

Contents

- [1 SEALEY AP6350.V3 Racking Unit](#)
- [2 Product Information](#)
- [3 INTRODUCTION](#)
- [4 ASSEMBLY](#)
- [5 Documents / Resources](#)
 - [5.1 References](#)
- [6 Related Posts](#)



SEALEY AP6350.V3 Racking Unit



Specifications

- **Model No:** AP6350.V3/AP6350GS.V3
- **Overall Size (WxDxH):** 900x400x1800mm

- **Shelf Capacity:** 350kg

Product Information

The 5 Shelf Racking Unit has a 350kg capacity per level and is available in models AP6350.V3 and AP6350GS.V3. It features a fully painted steel/galvanized frame with five MDF shelves. The maximum capacity of the rack is 1750kg. The unit can be assembled without the need for nuts and bolts, clips together quickly, and the two-piece uprights allow for versatile configurations.

Usage Instructions

Safety

- Ensure compliance with Health & Safety regulations during assembly and use.
- Place the rack on a level, solid surface like concrete.
- Avoid using the rack outdoors or in wet locations.
- Do not exceed the maximum load of 350kg per shelf.
- Secure the rack to a wall if possible. Distribute heavier items on lower shelves evenly.

Assembly

1. Unpack the product and verify the contents against the checklist.
2. Follow the assembly steps provided in the manual, starting with building the ends and joining sections.
3. Fit shelves and remaining pieces as instructed to complete the assembly.

Environment Protection

Recycle unwanted materials instead of disposing of them as waste. When the product needs disposal, drain any fluids into approved containers and dispose of them following local regulations.

FAQ

- **Q: Can I exceed the maximum load capacity per shelf?**
 - **A:** No, exceeding the maximum load capacity of 350kg per shelf can compromise the structural integrity of the rack and pose safety risks.
- **Q: Can I use this rack outdoors?**
 - **A:** No, it is not recommended to use the rack outdoors or in wet locations to prevent damage.

Thank you for purchasing a Sealey product. Manufactured to a high standard, this product will, if used according to these instructions, and properly maintained, give you years of trouble free performance.

IMPORTANT: PLEASE READ THESE INSTRUCTIONS CAREFULLY. NOTE THE SAFE OPERATIONAL REQUIREMENTS, WARNINGS & CAUTIONS. USE THE PRODUCT CORRECTLY AND WITH CARE FOR THE PURPOSE FOR WHICH IT IS INTENDED. FAILURE TO DO SO MAY CAUSE DAMAGE AND/OR PERSONAL INJURY AND WILL INVALIDATE THE WARRANTY. KEEP THESE INSTRUCTIONS SAFE FOR FUTURE USE.



Refer to
instructions



Wear protective
gloves

SAFETY

- **WARNING!** Ensure Health & Safety, and local authority regulations are adhered to when assembling and using this rack.
- Locate the rack in a suitable area where it will not be an obstruction.
- Keep the general area clean, and uncluttered and ensure there is adequate lighting.
- **WARNING!** Erect rack on a level and solid surface such as concrete.
- Keep children and unauthorized persons away from the storage area.
- DO NOT use the rack for any purpose other than that for which it is designed.
- DO NOT use the rack outdoors.
- DO NOT get the rack wet or use in damp or wet locations or areas where there is condensation.
- DO NOT clean the shelf supports with any solvents that may damage the surface.
- Ensure that the rack is properly assembled before loading them with heavy items.
- **WARNING!** The maximum load for each shelf is 350kg.
- Where possible the rack should be fixed to the wall with suitable fixings.
- Place heavier items on the lower shelves.
- Heavier items should be evenly distributed across the shelves.

INTRODUCTION

Fully painted steel/galvanized frame with five MDF shelves (AP6350 painted/AP6350GS galvanized). 350kg capacity per level giving a maximum capacity of 1750kg per rack. No nuts and bolts for easy assembly. Clips together in minutes. Two-piece uprights allow use as a single bay rack or split in two separate shelf systems or workstations

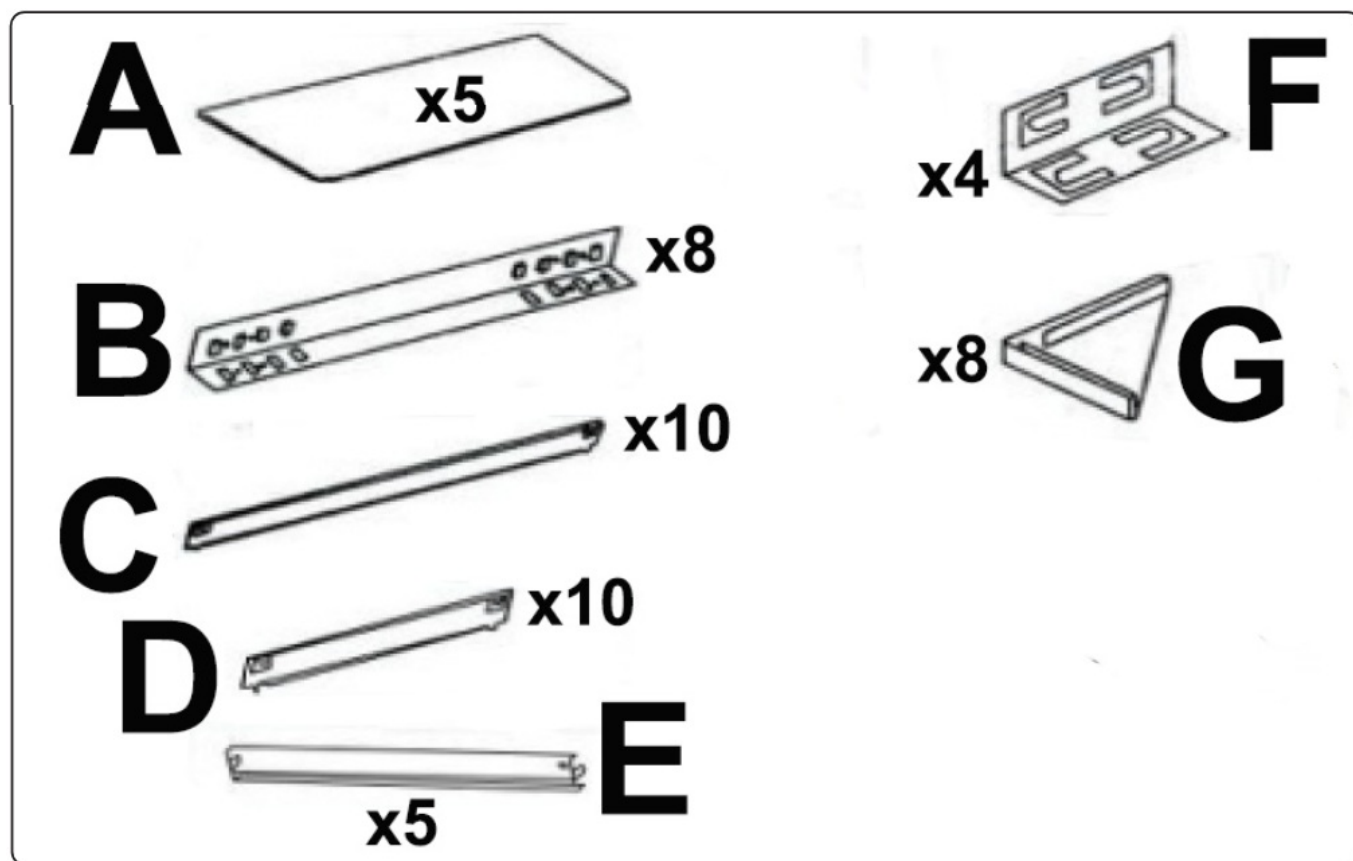
SPECIFICATION

Model No:	AP6350.V3/AP6350GS.V3
Overall Size (WxDxH):	900x400x1800mm
Shelf Capacity:	350Kg

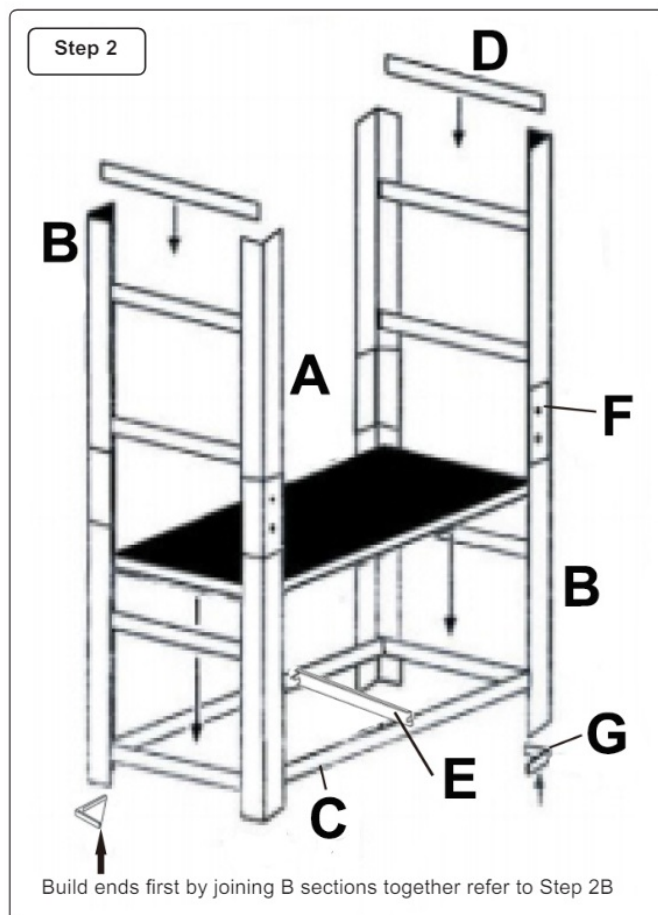
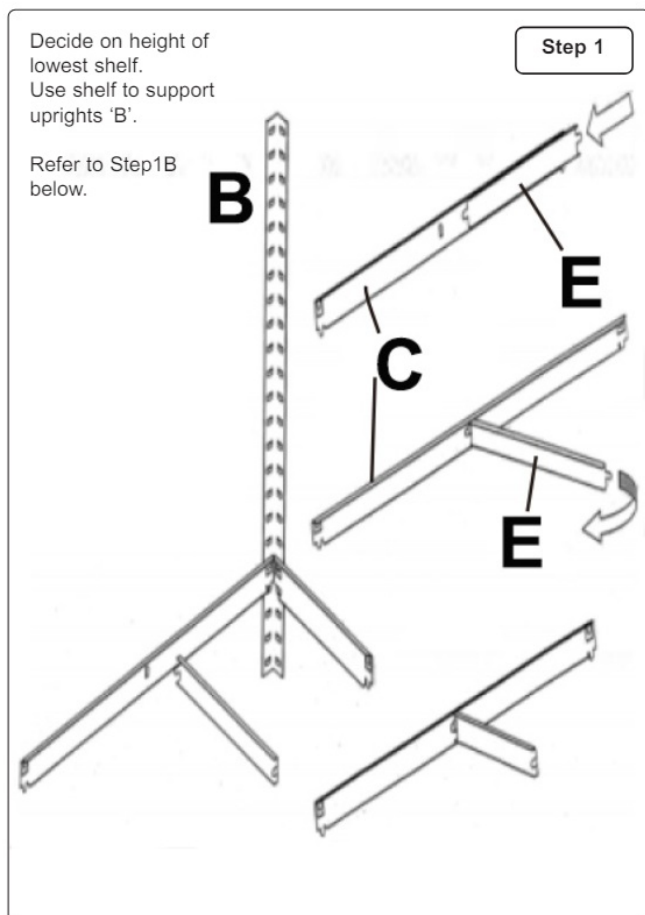
CONTENTS

Carefully unpack the product and check the contents against the list below. Should any items be missing or

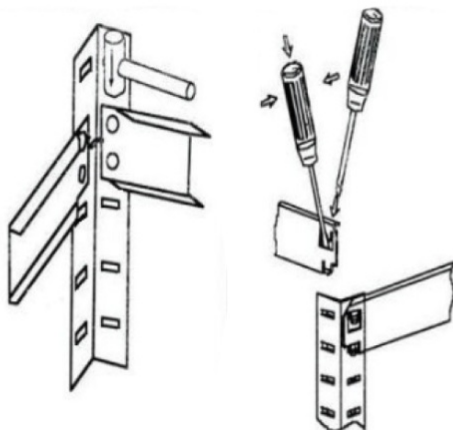
damaged make immediate contact with your Sealey stockist.



ASSEMBLY



Use soft hammer/mallet to tap down horizontal supports. Use screwdriver to bend tabs down.



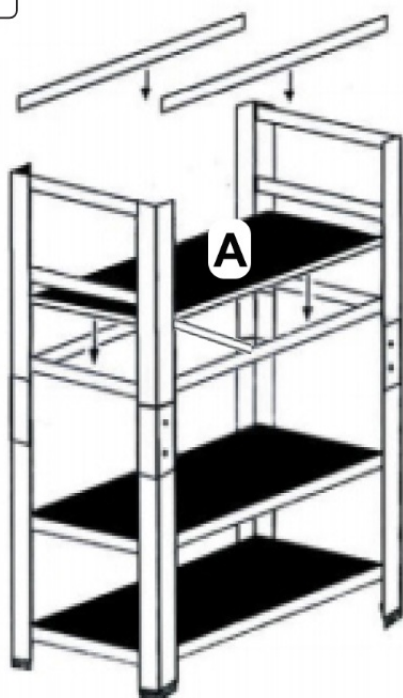
Step 1B

Joining pieces



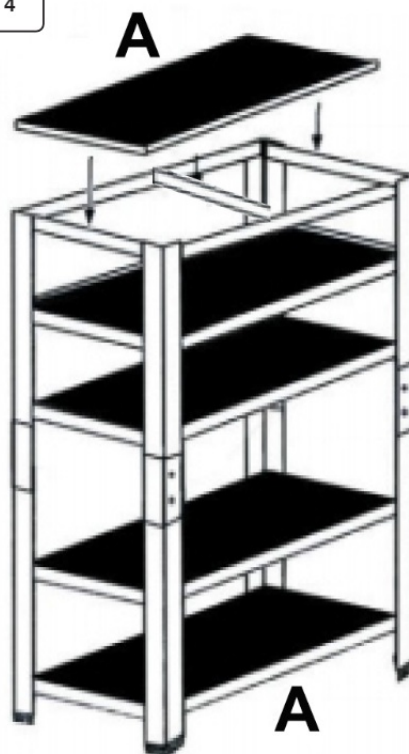
Step 2B

Step 3



Fit shelves and last 2 C and E pieces.

Step 4



Fit last shelf.



ENVIRONMENT PROTECTION

Recycle unwanted materials instead of disposing of them as waste. All tools, accessories, and packaging should be sorted, taken to a recycling center and disposed of in a manner that is compatible with the environment. When the product becomes completely unserviceable and requires disposal, drain any fluids (if applicable) into approved containers and dispose of the product and fluids according to local regulations.



REGISTER YOUR
PURCHASE HERE

WEEE REGULATIONS



Dispose of this product at the end of its working life in compliance with the EU Directive on Waste Electrical and Electronic Equipment (WEEE). When the product is no longer required, it must be disposed of in an environmentally protective way. Contact your local solid waste authority for

recycling information.


- **NOTE:** It is our policy to continually improve products and as such we reserve the right to alter data, specifications and component parts without prior notice. Please note that other versions of this product are available. If you require documentation for alternative versions, please email or call our technical team on technical@sealey.co.uk or 01284 757505.
- **IMPORTANT:** No Liability is accepted for incorrect use of this product.
- **WARRANTY:** Guarantee is 12 months from purchase date, proof of which is required for any claim

Sealey Group, Kempson Way, Suffolk Business Park, Bury St Edmunds, Suffolk. IP32 7AR

- 01284 757500
- sales@sealey.co.uk
- www.sealey.co.uk

© Jack Sealey Limited

Documents / Resources

	<p>SEALEY AP6350.V3 Racking Unit [pdf] Instruction Manual AP6350.V3 Racking Unit, AP6350.V3, Racking Unit, Unit</p>
---	---

References

- [User Manual](#)

Manuals+. [Privacy Policy](#)

This website is an independent publication and is neither affiliated with nor endorsed by any of the trademark owners. The "Bluetooth®" word mark and logos are registered trademarks owned by Bluetooth SIG, Inc. The "Wi-Fi®" word mark and logos are registered trademarks owned by the Wi-Fi Alliance. Any use of these marks on this website does not imply any affiliation with or endorsement.