

Sealey AP1905A Workstation with 2 Drawers, 2 Cupboard and Open Storage



Sealey AP1905A Workstation with 2 Drawers, 2 Cupboard and Open Storage Installation Guide

[Home](#) » [SEALEY](#) » Sealey AP1905A Workstation with 2 Drawers, 2 Cupboard and Open Storage Installation Guide 

Contents

- [1 Sealey AP1905A Workstation with 2 Drawers, 2 Cupboard and Open Storage](#)
- [2 Product Information](#)
- [3 SAFETY](#)
- [4 INTRODUCTION](#)
- [5 SPECIFICATION](#)
- [6 CONTENTS](#)
- [7 HARDWARE CONTENTS](#)
- [8 ASSEMBLY](#)
- [9 Documents / Resources](#)
 - [9.1 References](#)
- [10 Related Posts](#)



Sealey AP1905A Workstation with 2 Drawers, 2 Cupboard and Open Storage



Product Information

This workstation is a versatile unit with 2 drawers, 2 cupboards, and open storage space, providing ample storage and workspace for various tasks. It is designed for heavy-duty use and features a powder-coated metal frame with a durable MDF work surface.

Specifications

- **Model No:** AP1905A
- **Nett Weight:** 76.1kg
- **Size (W x D x H):** 1690 x 600 x 865mm
- **Drawer (x2):** 415 x 160 x 415mm
- **Capacity:** 300kg

Assembly Instructions

1. Check hardware contents against the list provided.
2. Follow the step-by-step assembly instructions included in the manual.
3. Ensure to assemble the workstation on a level and solid ground
4. Use the provided bolts and plastic pins for assembly.
5. Adjust the feet for stability on uneven surfaces.

Usage Guidelines

- Keep the workstation clean and well-organized for efficient use.
- Avoid exceeding the maximum weight capacity specified.
- Secure workpieces using clamps or a vice before working on them.
- Do not use the workstation outdoors or in wet/damp conditions.
- Avoid using solvents that may damage the surface when cleaning the workstation.

Environmental Protection

Recycle any unwanted materials and dispose of tools, accessories, and packaging responsibly at a recycling center. When the product reaches the end of its service life, follow local regulations for proper disposal of fluids and the product itself

FAQ

- **Q: Can I use the workstation outdoors?**

A: No, it is recommended not to use the workstation outdoors to prevent damage.

- **Q: What is the weight capacity of the drawers?**

A: The drawers have a capacity of 300kg each.

WORKSTATION WITH 2 DRAWERS, 2 CUPBOARD & OPEN STORAGE MODEL NO: AP1905A

- Thank you for purchasing a Sealey product. Manufactured to a high standard, this product will, if used according to these instructions, and properly maintained, give you years of trouble free performance.
- **IMPORTANT: PLEASE READ THESE INSTRUCTIONS CAREFULLY. NOTE THE SAFE OPERATIONAL REQUIREMENTS, WARNINGS & CAUTIONS. USE THE PRODUCT CORRECTLY AND WITH CARE FOR THE PURPOSE FOR WHICH IT IS INTENDED. FAILURE TO DO SO MAY CAUSE DAMAGE AND/OR PERSONAL INJURY AND WILL INVALIDATE THE WARRANTY. KEEP THESE INSTRUCTIONS SAFE FOR FUTURE USE.**
- **PLEASE READ THESE INSTRUCTIONS CAREFULLY. NOTE THE SAFE OPERATIONAL REQUIREMENTS, WARNINGS & CAUTIONS. USE THE PRODUCT CORRECTLY AND WITH CARE FOR THE PURPOSE FOR WHICH IT IS INTENDED. FAILURE TO DO SO MAY CAUSE DAMAGE AND/OR PERSONAL INJURY AND WILL INVALIDATE THE WARRANTY. KEEP THESE INSTRUCTIONS SAFE FOR FUTURE USE.**



Refer to
instructions



Wear eye
protection

SAFETY

- **WARNING!** Ensure Health & Safety, local authority, and general workshop practice regulations are adhered to when using this bench.
- Locate bench in a suitable working area.
- Keep the work area clean, uncluttered and ensure there is adequate lighting.
- **WARNING!** Use bench on level and solid ground, preferably concrete. Avoid tarmac since the bench may sink into the surface.
- Keep the bench clean and tidy in accordance with good workshop practice.
- Keep children and unauthorised persons away from the working area.
- **DO NOT** use the bench for any purpose other than that for which it is designed.
- **DO NOT** exceed maximum capacity of workbench.
- **DO NOT** undertake work on the bench without the work piece being adequately secured. Use clamps or a vice (not included) to secure the work piece. Available from your Sealey stockist.
- **DO NOT** use the bench out of doors.
- **DO NOT** get the bench wet or use in damp or wet locations or areas where there is condensation.

- DO NOT clean the bench with any solvents which may damage the paint surface or the protective coating on the wooden top.

INTRODUCTION

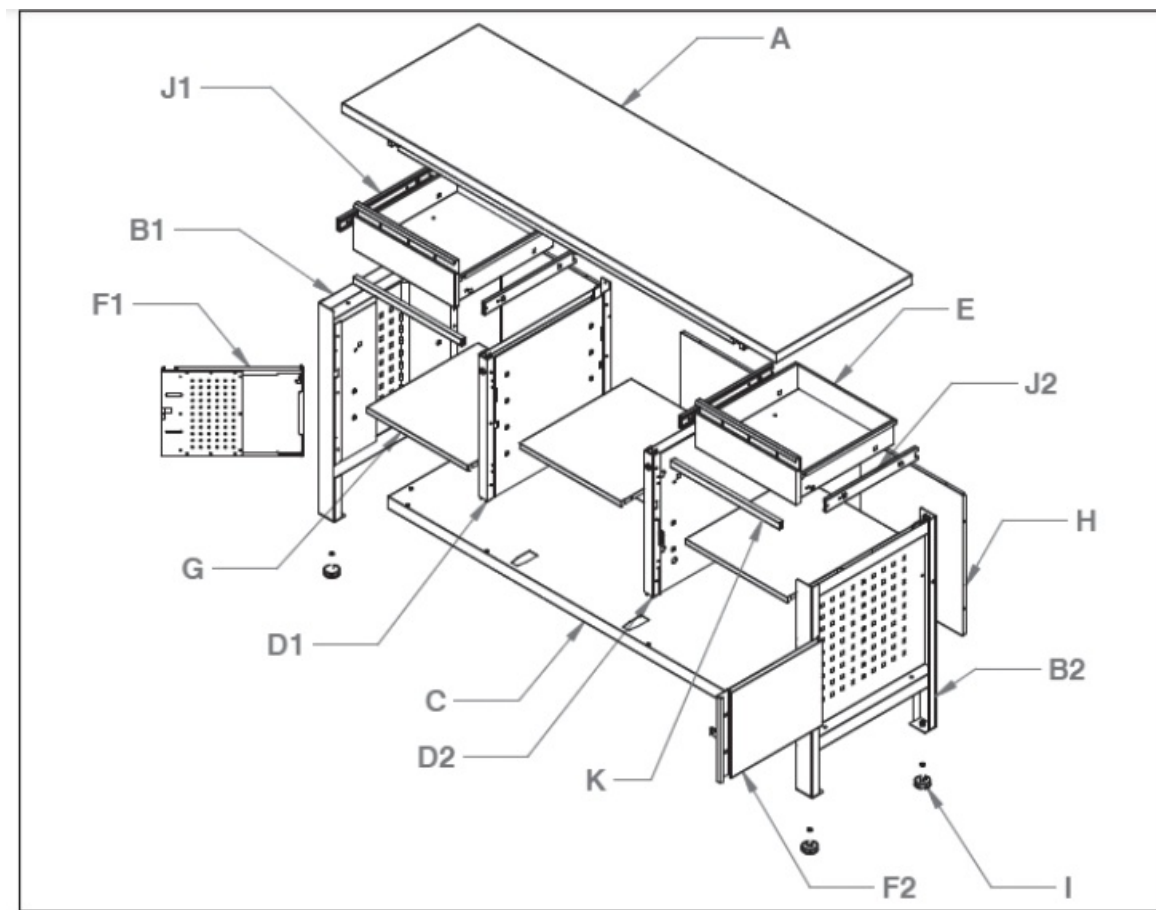
- Heavy-duty powder coated metal frame with a 40mm MDF work surface. Storage splits into 3-sections with a choice of cupboards, drawers and an open space with two adjustable shelves. All cabinet drawers fitted with ball-bearing slides and cupboards include a hanging pegboard on the inside of the door. Fully lockable and features adjustable feet to help stability when placed on an uneven surface. Supplied flat-packed with two keys.

SPECIFICATION

Model no:	AP1905A
Nett Weight:	76.1kg
Size (W x D x H):	1690 x 600 x 865mm
Drawer (x2):	415 x 160 x 415mm
Capacity:	300kg

CONTENTS

Part	Description	Quantity
A	Top	1
B1	Left side	1
B2	Right side	1
C	Bottom	1
D1	Left support	1
D2	Right support	1
E	Drawer	2
F1	Left door	1
F2	Right door	1
G	Shelf	3
H	Back	3
I	Leg leveller assy.	4
J1	Left slide	2
J2	Right slide	2
K	Rail	2



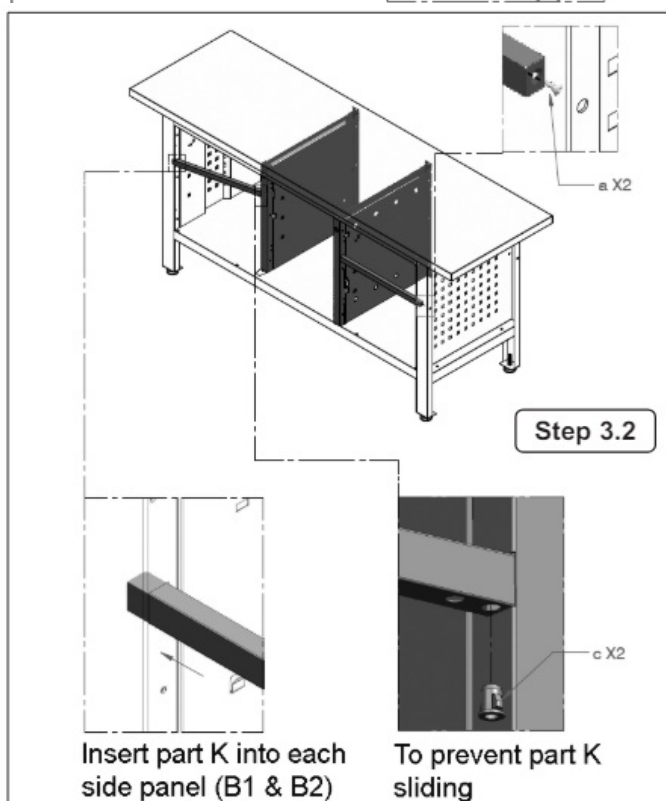
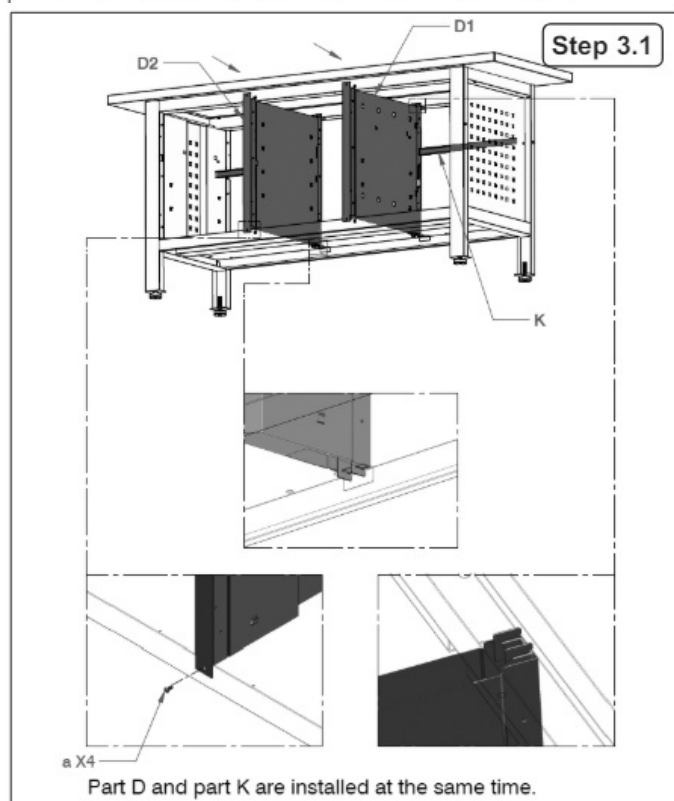
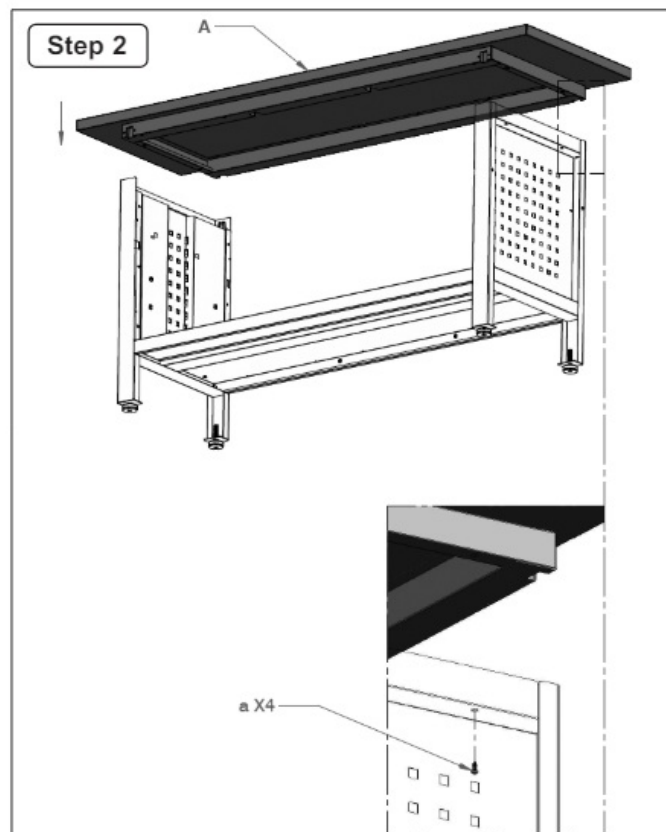
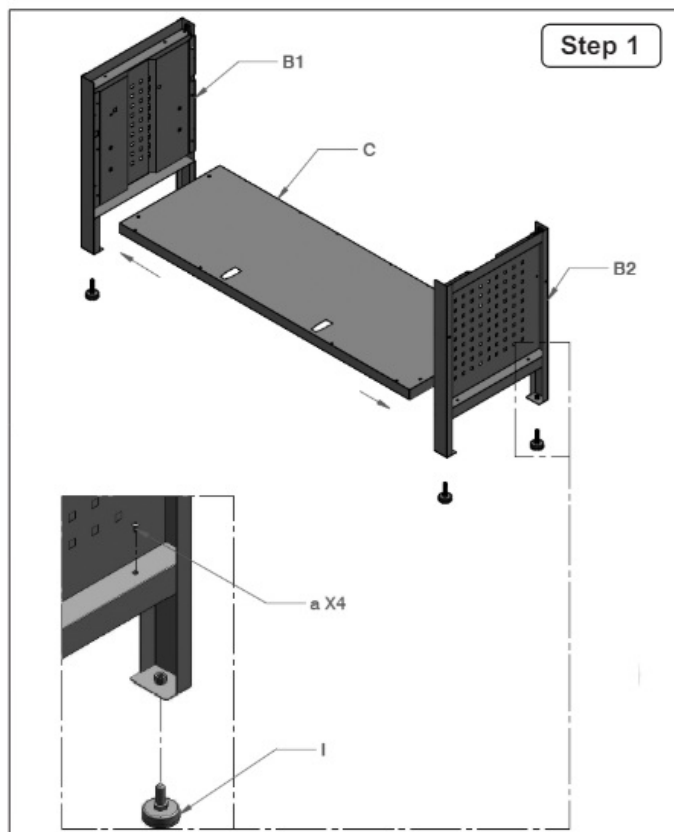
HARDWARE CONTENTS

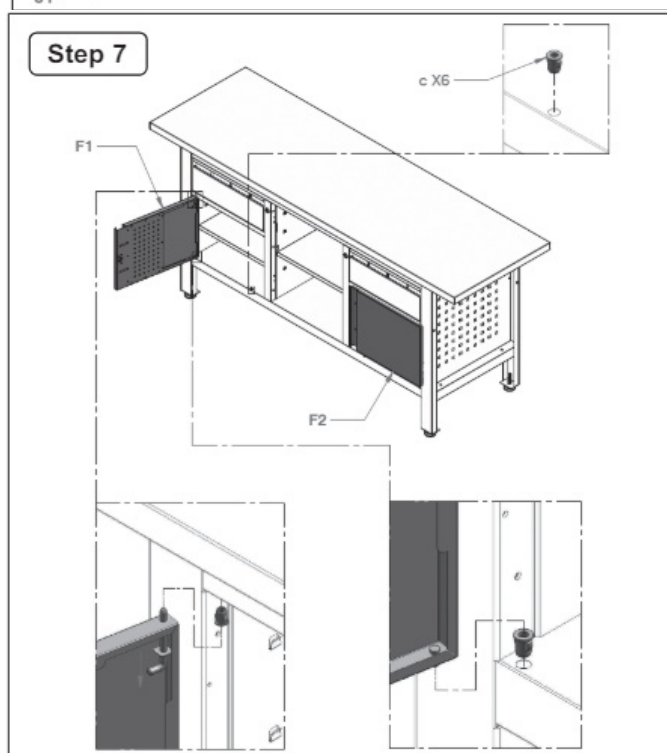
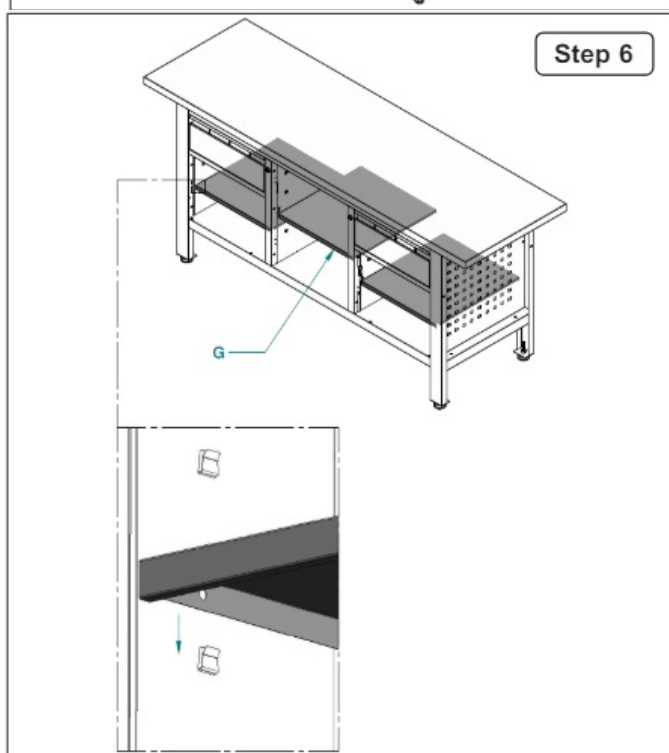
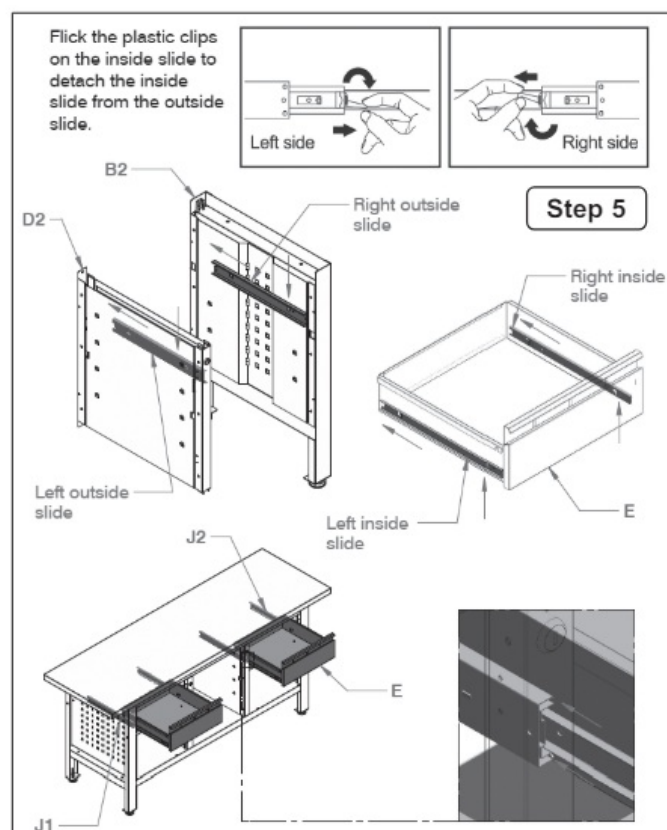
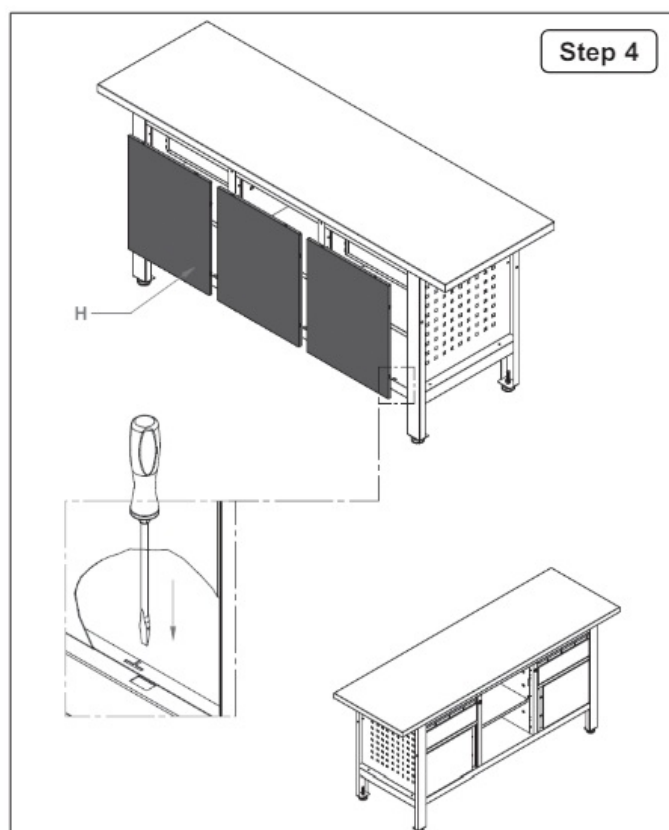


Part	Description	Quantity
a	Bolts ST4.8×10	14+2
b	Plastic pin	8

Before assembly check contents against the contents lists.

ASSEMBLY





ENVIRONMENT PROTECTION




Recycle unwanted materials instead of disposing of them as waste. All tools, accessories and packaging should be sorted, taken to a recycling centre and disposed of in a manner which is compatible with the environment. When the product becomes completely unserviceable and requires disposal, drain any fluids (if applicable) into approved containers and dispose of the product and fluids according to local regulations.



- **NOTE:** It is our policy to continually improve products and as such we reserve the right to alter data, specifications and component parts without prior notice.
- **IMPORTANT:** No Liability is accepted for incorrect use of this product.
- **WARRANTY:** Guarantee is 12 months from purchase date, proof of which is required for any claim.
- Sealey Group, Kempson Way, Suffolk Business Park, Bury St Edmunds, Suffolk. IP32 7AR
- 01284 757500
- sales@sealey.co.uk
- www.sealey.co.uk
- © Jack Sealey Limited
- AP1905A Issue 2 30/05/24

Documents / Resources

	<p>Sealey AP1905A Workstation with 2 Drawers, 2 Cupboard and Open Storage [pdf] Installati on Guide</p> <p>AP1905A, AP1905A Workstation with 2 Drawers 2 Cupboard and Open Storage, AP1905A Workstation, Workstation with 2 Drawers 2 Cupboard and Open Storage, Workstation with 2 Drawers, 2 Drawers, Workstation with 2 Cupboard, 2 Cupboard, Workstation with Open Storage, Open Storage</p>
--	--

References

- [User Manual](#)

[Manuals+](#), [Privacy Policy](#)

This website is an independent publication and is neither affiliated with nor endorsed by any of the trademark owners. The "Bluetooth®" word mark and logos are registered trademarks owned by Bluetooth SIG, Inc. The "Wi-Fi®" word mark and logos are registered trademarks owned by the Wi-Fi Alliance. Any use of these marks on this website does not imply any affiliation with or endorsement.