

Seagate FireCuda STJP2000400 Gaming SSD



Seagate FireCuda STJP2000400 Gaming SSD User Manual

[Home](#) » [Support](#) » Seagate FireCuda STJP2000400 Gaming SSD User Manual 

Contents

- 1 [Seagate FireCuda STJP2000400 Gaming SSD](#)
- 2 [Introduction](#)
- 3 [Box content](#)
- 4 [Minimum system requirements](#)
- 5 [Getting Started](#)
- 6 [Optional Formatting and Partitioning](#)
- 7 [Manual formatting](#)
 - 7.1 [Mac](#)
- 8 [FireCuda Gaming SSD Performance](#)
- 9 [Troubleshooting](#)
 - 9.1 [All users](#)
 - 9.2 [Windows](#)
 - 9.3 [Mac](#)
- 10 [Regulatory Compliance](#)
- 11 [Frequently Asked Questions](#)
- 12 [References](#)
- 13 [Related Posts](#)



Seagate FireCuda STJP2000400 Gaming SSD



Click [here](#) to access an up-to-date online version of this document. You will also find the most recent content as well as expandable illustrations, easier navigation, and search capability.

Introduction

Experience less lag and more action with the Seagate® FireCuda® Gaming SSD, a portable USB-C drive that accelerates booting, loading, and saving with cutting-edge USB 3.2 Gen 2×2 technology. For common questions and answers about your hard drive, see [Frequently Asked Questions](#) or visit [Seagate customer support](#).

Box content

- Seagate FireCuda Gaming SSD
- USB-C cable
- Quick start guide

Important—Save your packaging. If you experience problems with your hard drive and want to exchange it, the hard drive must be returned in its original packaging.

Minimum system requirements

Ports

- Computer with USB 3.2 Gen 2×2 port
- Compatible with USB 3.1 port (reduced performance)

Operating system

- Windows® 10
- Compatible with Windows 7 (reduced performance)

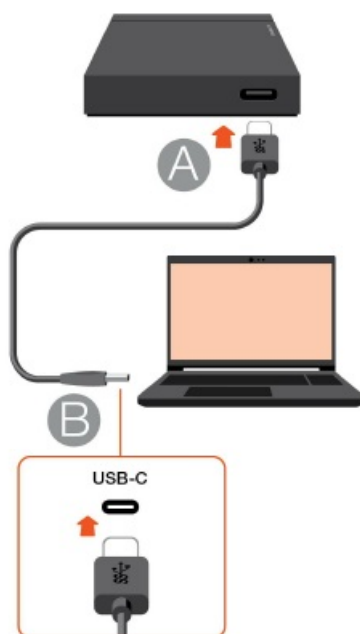
Minimum free disk space

- 600MB recommended

Getting Started

Connect the USB-C cable

Use the USB-C cable to connect Seagate FireCuda Gaming SSD to your computer's USB-C port.



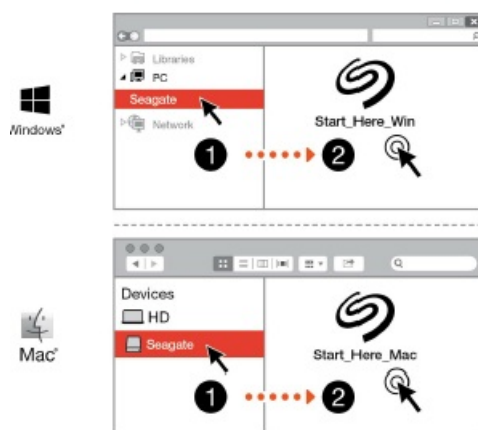
Set up Seagate FireCuda Gaming SSD

The setup process lets you:

- Register your Seagate FireCuda Gaming SSD: Get the most from your drive with easy access to information and support.

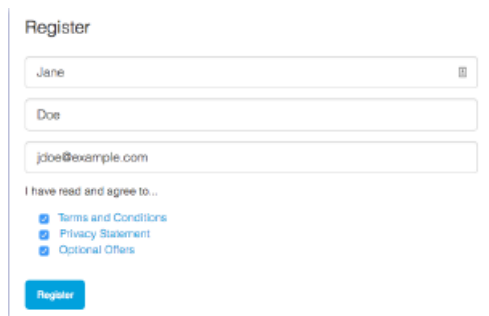
Your computer must be connected to the internet to register your device and

Start here



Using a file manager such as File Explorer or Finder, open FireCuda Gaming SSD and launch Start Here Win or Start Here Mac.

Register your device



Register

Jane

Doe

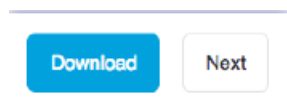
jdoe@example.com

I have read and agree to...

- ☒ Terms and Conditions
- ☒ Privacy Statement
- ☒ Optional Offers

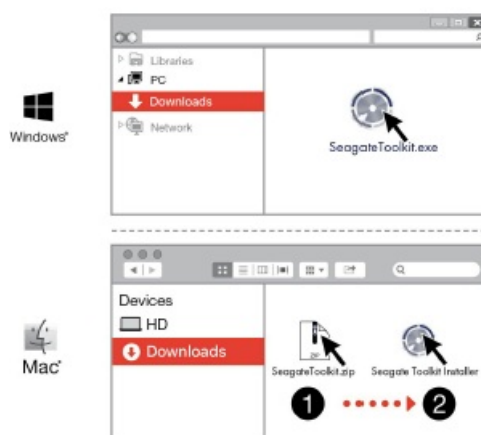
Register

Download Toolkit



Click the Download button.

Install Toolkit



Using a file manager such as File Explorer or Finder, go to the folder where you receive downloads.

- Click on the SeagateToolkit.exe file to launch the application.
- Open the SeagateToolkit.zip file. Click on the Seagate Toolkit Installer to launch the application.

Your computer must be connected to the internet to install

Heat dissipation

The FireCuda Gaming SSD enclosure dissipates heat to prolong the life of the SSD. Since Seagate's unique design draws heat away from the drive, the external casing may be warm to the touch after extended use.

Use Toolkit to Manage LED Color and Set Up Sync Plus Plans

Toolkit helps you easily manage LED color settings for FireCuda Gaming SSD and create and manage Sync Plus plans.

Manage LED color settings

For leveled-up illumination, use Toolkit to customize FireCuda Gaming SSD's LED with a range of RGB colors and light patterns.

- [Click here for details on managing LED color settings.](#)

Create a Sync Plus plan

Sync Plus creates a synced folder on your Seagate FireCuda Gaming SSD that mirrors folders on your PC or Mac, so your files are available in both places. Deleted files can be automatically stored in an archive folder on FireCuda Gaming SSD in case you need them.

- [Click here for details on setting up Sync Plus.](#)

Optional Formatting and Partitioning

- Seagate FireCuda Gaming SSD is preformatted NTFS for optimal performance on Windows.

About file system formats

- **NTFS**—The native file system for Windows. macOS can read NTFS volumes but cannot natively write to them.
- **Mac OS Extended (HFS+)**—An Apple file system optimized for macOS 10.12 and earlier. This file system remains the best option for external storage devices and is the only format compatible with Time Machine. Windows cannot natively read or write to HFS+ (journaled) volumes.
- **APFS (Apple File System)**—An Apple file system optimized for solid state drives (SSDs) and flash-based storage systems. While APFS may benefit SSD performance, note the following restrictions:
 - You cannot use an APFS-formatted disk as your Time Machine backup drive. Format Seagate FireCuda Gaming SSD to HFS+ if you intend to use it with Time Machine.
 - APFS is only supported on macOS 10.13 or later.
- **exFAT**—Compatible with macOS and Windows. exFAT is not a journaled file system which means it can be more susceptible to data corruption when errors occur or the drive is not disconnected properly from the computer.

How to choose the file system format

- **Use NTFS if:** ...you connect the storage device to Windows computers, and you don't need to allow a Mac to write to the storage device.
- **Use HFS+ if:** ...you connect the storage device to Mac computers, and you don't need to allow a Windows computer to read or write to the disk. HFS+ is the only format compatible with Time Machine.
- **Use APFS if:** ...you connect the storage device to Mac computers, and you don't need to allow a Windows computer to read or write to the drive. Do not use APFS if you intend to use Seagate FireCuda Gaming SSD with Time Machine, or if your computer is not running macOS 10.13 or later.
- **Use exFAT if:** ...you need to allow both Mac and Windows computers to read and write to the storage device.

Manual formatting

Use the steps below to manually format and partition a storage device.

Formatting erases everything on the storage device. Seagate highly recommends that you back up all data on your storage device before performing the steps below. Seagate is not responsible for any data lost due to formatting, partitioning, or using a Seagate storage device.

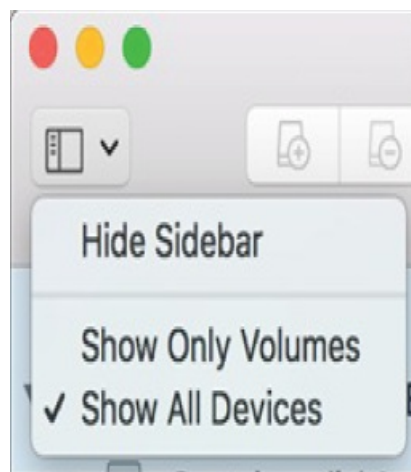
Windows

1. Make sure the storage device is connected to and mounted on the computer.
2. Go to Search and then type Disk Management. In the search results, double-click Disk Management.
3. From the list of storage devices in the middle of the Disk Management window, locate your Seagate device.
4. The partition must be available to format. If it is currently formatted, right click on the partition and then choose Delete.
5. To create a new partition, right click on the volume and select New Simple Volume. Follow the on-screen instructions when the New Simple Volume Wizard appears.

Mac

macOS version 10.11 and later

1. Open the Finder and go to Applications > Utilities > Disk Utility.
2. In the sidebar to the left, select your Seagate FireCuda Gaming SSD.
 - macOS starting version 10.13—Make sure to select the storage device and not just the volume. If you don't see two entries listed in the sidebar, change the view in disk utility to show both the drive and the volume. The view button is in the upper left side of the Disk Utility window. Change the view to Show All Devices. This feature was introduced in macOS 10.13 and is not available in 10.11 or 10.12.



3. Select Erase.
4. A dialog box opens. Enter a name for the drive. This will be the name displayed when the drive mounts.
5. For Format, select OS X Extended (Journaled).
6. For Scheme, select GUID Partition Map.
7. Click Erase.
8. Disk Utility formats the drive. When it's finished, click Done.

Safely Remove Seagate FireCuda Gaming SSD From Your Computer

Always eject a storage device from your computer before physically disconnecting it. Your computer must perform filing and housekeeping operations on the drive before it is removed. If you unplug the drive without using the operating system's software, your files can become corrupt or damaged.

Windows

Use the Safely Remove tool to eject a storage device.

1. Click the Safely Remove icon in your Windows System Tray to view the devices you can eject. If you don't see the Safely Remove Hardware icon, click the Show Hidden Icons arrow in the system tray to display all icons in the notification area.
2. In the list of devices, choose the storage device you want to eject. Windows displays a notification when it is safe to remove the device.
3. Disconnect the storage device from the computer.

Mac

There are several ways you can eject your storage device from a Mac. See below for two options.

Eject via Finder window

1. Open a Finder window.
2. On the sidebar, go to Devices and locate the storage device you want to eject. Click the eject symbol to the right of the storage device name.
3. Once the storage device disappears from the sidebar or, the Finder window closes, you can disconnect the interface cable from your Mac.

Eject via Desktop

1. Select the desktop icon for your storage device and drag it to the Trash.
2. When the storage device icon is no longer visible on your desktop, you can physically disconnect it from your Mac.

FireCuda Gaming SSD Performance

You can connect your device to any USB-C port on your computer, but transfer rates vary:

- Port Transfer rates
- USB 3.1 Gen 1 up to 5Gb/s
- USB 3.1 Gen 2 up to 10Gb/s
- USB 3.2 Gen 2×2 up to 20Gb/s

Enabling write performance (Windows only)

Write caching is used to improve performance by using the volatile memory (RAM) to collect write commands sent to a storage device. See [How to improve performance of an external drive in Windows](#).

Full performance setting

Seagate FireCuda Gaming SSD has a USB 3.2 Gen 2×2 interface that allows for full performance transfer rates up to 20Gb/s when connected to a compatible USB 3.2 Gen 2×2 port on the host computer. There may be instances when the drive experiences an involuntary disconnect or error while writing or reading files when connected to a USB 3.2 Gen 2×2 port. If you encounter this issue, you can reduce the chances of recurring problems by disabling full performance for FireCuda Gaming SSD. Disabling full performance changes the potential transfer rate from up to 20Gb/s to up to 10Gb/s. Seagate Toolkit is required to change the full performance setting.

To disable full performance:

1. Connect FireCuda Gaming SSD to your computer and open the Toolkit app.
2. In Toolkit, click on FireCuda Gaming SSD.
3. Click the Full Performance toggle button to change the setting.

After disabling or enabling full performance, the drive may disconnect from your computer and automatically reconnect.

Troubleshooting

Frequently Asked Questions

For help setting up and using Seagate FireCuda Gaming SSD, review the frequently asked questions below. For additional support resources, go to [Seagate customer support](#).

All users

Problem: My file transfers are too slow

- **Q: Are both ends of the USB cable firmly attached?**
- A: Review troubleshooting tips for cable connections below:
 - Check both ends of the cable and make sure that they are fully seated in their respective ports.
 - Try disconnecting the cable, waiting 10 seconds, and then reconnecting it.
 - Try a different USB cable.
- **Q: Are there other devices connected to the same port or hub?**
- A: Disconnect other devices and see if the storage device's performance improves.
- **Q: Are you connected to a USB 3.2 Gen2x2 port?**
- A: For optimal performance, a USB 3.2 Gen 2×2 device must be connected to a host port that supports USB 3.2 Gen 2×2. Confirm that your computer's USB-C port is USB 3.2 Gen 2×2. Connecting FireCuda Gaming SSD to a Thunderbolt 3 or other USB-C ports can limit the performance.
- **Q: (Windows only) Is write caching enabled?**
- A: Write caching is used to improve performance by using the volatile memory (RAM) to collect write commands sent to a storage device. See [How to improve the performance of an external drive in Windows](#).

Problem: The provided USB cable is too short

- **Q: Can I use my storage device with a longer cable?**
- A: Yes, provided it is certified according to USB standards. However, Seagate recommends using the cable shipped with your storage device for the best results. If you use a longer cable and experience problems with detection, transfer rates, or disconnection, use the original cable included with your storage device.

Problem: I'm receiving file transfer error messages

- **Q: Did you get an error message telling you that the drive has been disconnected when coming out of sleep mode?**
- A: Ignore this message since the drive remounts on the desktop despite the pop-up.

Windows

Problem: The device icon doesn't appear in Computer

- **Q: Is the storage device listed in Device Manager?**
- A: All storage devices appear in at least one place in Device Manager. Type Device Manager in Search to launch it. Look in the Disk Drives section and, if necessary, click the Plus (+) icon to view the full list of devices. If you're uncertain that your storage device is listed, safely unplug it and then reconnect it. The entry that changes is your Seagate device.
- **Q: Is your device listed next to an unusual icon?**
- A: Windows Device Manager usually provides information about failures with peripherals. While the Device Manager can assist with troubleshooting most problems, it may not display the exact cause or provide a precise solution. An unusual icon next to the device can reveal a problem. For example, instead of the normal icon based on the type of device, it has an exclamation point, question mark, or an X. Right-click this icon and then choose Properties. The General tab provides a potential reason why the device is not working as expected.

Mac

Problem: The device icon does not appear on my desktop

- **Q: Is your Finder configured to hide external disks on the desktop?**
- A: Go to Finder and then check Preferences | General tab | Show these items on the desktop. Confirm that External Disks is selected.
- **Q: Is your device mounting in the operating system?**
- A: Open Disk Utility at Go | Utilities | Disk Utility. If the device is listed in the left-hand column, check your Finder preferences to see why it is not displayed on the desktop (review the question above).
- **Q: Does your computer's configuration meet the minimum system requirements for use with this storage device?**
- A: Refer to the product packaging for the list of supported operating systems.
- **Q: Did you follow the correct installation steps for your operating system?**
- A: Review the installation steps in Getting Started.

Regulatory Compliance

- **Product Name:** Seagate FireCuda Gaming SSD
- **Regulatory Model Number:** SRD0FV3

China RoHS

China RoHS 2 refers to the Ministry of Industry and Information Technology Order No. 32, effective July 1, 2016, titled Management Methods for the Restriction of the Use of Hazardous Substances in Electrical and Electronic Products. To comply with China RoHS 2, we determined this product's Environmental Protection Use Period (EPUP) to be 20 years in accordance with the Marking for the Restricted Use of Hazardous Substances in Electronic and Electrical Products, SJT 11364-2014.

Taiwan RoHS

Taiwan RoHS refers to the Taiwan Bureau of Standards, Metrology and Inspection's (BSMI's) requirements in standard CNS 15663, Guidance to reduction of the restricted chemical substances in electrical and electronic equipment. Beginning on January 1, 2018, Seagate products must comply with the "Marking of presence" requirements in Section 5 of CNS 15663. This product is Taiwan RoHS compliant. The following table meets the Section 5 "Marking of presence" requirements.

Frequently Asked Questions

What is the Seagate FireCuda STJP2000400 Gaming SSD and what technology does it use?

The Seagate FireCuda STJP2000400 Gaming SSD is a portable USB-C drive designed to enhance gaming performance by accelerating booting, loading, and saving. It utilizes cutting-edge USB 3.2 Gen 2x2 technology for high-speed data transfer.

What is included in the box when you purchase the Seagate FireCuda Gaming SSD?

The box includes the Seagate FireCuda Gaming SSD itself, a USB-C cable, and a Quick Start Guide. It's important to save the packaging in case you need to exchange the hard drive.

How does the Seagate FireCuda Gaming SSD handle heat dissipation?

The Seagate FireCuda Gaming SSD has a design that dissipates heat, prolonging the life of the SSD. The external casing may become warm to the touch after extended use due to the heat-dissipating design.

What does the Seagate Toolkit offer in terms of managing LED color settings and Sync Plus plans?

The Seagate Toolkit allows you to manage LED color settings for the FireCuda Gaming SSD, customizing it with a range of RGB colors and light patterns. It also helps you create and manage Sync Plus plans, which sync folders between your SSD and PC or Mac.

How can you enable or disable full performance for the Seagate FireCuda Gaming SSD, and what are the implications?

You can enable or disable full performance using the Seagate Toolkit. Disabling full performance changes the transfer rate from up to 20Gb/s to up to 10Gb/s. This change can reduce the chances of disconnect or errors when connected to a USB 3.2 Gen 2x2 port.

What regulatory compliance information is available for the Seagate FireCuda Gaming SSD?

The regulatory compliance information for the Seagate FireCuda Gaming SSD includes its product name (Seagate FireCuda Gaming SSD) and regulatory model number (SRD0FV3). It also mentions compliance with China RoHS and Taiwan RoHS standards.

Can I use a different USB cable with my Seagate FireCuda STJP2000400 Gaming SSD?

While you can use a different USB cable, it's recommended to use the cable provided with the Seagate FireCuda Gaming SSD for optimal performance. If you experience issues with detection, transfer rates, or disconnection, it's advisable to use the original cable.

How can I improve the performance of my Seagate FireCuda STJP2000400 Gaming SSD in Windows?

To improve performance in Windows, you can enable write caching. Write caching utilizes volatile memory (RAM) to collect write commands sent to the storage device. Refer to the provided documentation for details on enabling write caching in Windows.

Can I use the Seagate FireCuda STJP2000400 Gaming SSD with a Mac computer?

Yes, the Seagate FireCuda Gaming SSD is compatible with Mac computers. You can use it with macOS, but be sure to choose the appropriate file system format (e.g., HFS+ or exFAT) depending on your requirements.

Does the Seagate FireCuda STJP2000400 Gaming SSD support Time Machine backups on macOS?

The Seagate FireCuda Gaming SSD does not support Time Machine backups when formatted with the APFS file system. To use it with Time Machine, format the SSD to HFS+ and ensure your macOS version is compatible.

Can I use the Seagate FireCuda STJP2000400 Gaming SSD on both Mac and Windows computers?

Yes, you can use the Seagate FireCuda Gaming SSD on both Mac and Windows computers by formatting it with the exFAT file system. ExFAT is compatible with both operating systems, allowing you to read and write files on both platforms.

Can I enable or disable full performance for my Seagate FireCuda STJP2000400 Gaming SSD after the initial setup?

Yes, you can enable or disable full performance for the SSD using the Seagate Toolkit application even after the initial setup. This can help manage the transfer rate as needed.

How can I contact Seagate customer support for further assistance with my Seagate FireCuda STJP2000400 Gaming SSD?

You can contact Seagate customer support for additional assistance with your SSD by visiting the Seagate support website or referring to the provided support resources in the documentation.

Reference: [Seagate FireCuda STJP2000400 Gaming SSD User Manual-device.report](#)

References

- [User Manual](#)