



SEAGATE LYVE Cloud Connecting S3 Browser with Cloud User Guide

[Home](#) » [Seagate](#) » SEAGATE LYVE Cloud Connecting S3 Browser with Cloud User Guide 



SEAGATE LYVE Cloud Connecting S3 Browser with Cloud User Guide



Contents

- [1 LYVE Cloud Connecting S3 Browser with Cloud](#)
- [2 Get Connected](#)
- [3 Task 1: Create Lyve Cloud Account](#)
- [4 Task 2: Connect with S3 Browser](#)
- [5 Documents / Resources](#)
 - [5.1 References](#)
- [6 Related Posts](#)

LYVE Cloud Connecting S3 Browser with Cloud

Best Practices Guide

Connecting S3 Browser with Lyve Cloud

Understand how to set up buckets and permissions, as well as how to connect with S3 Browser.

Get Connected

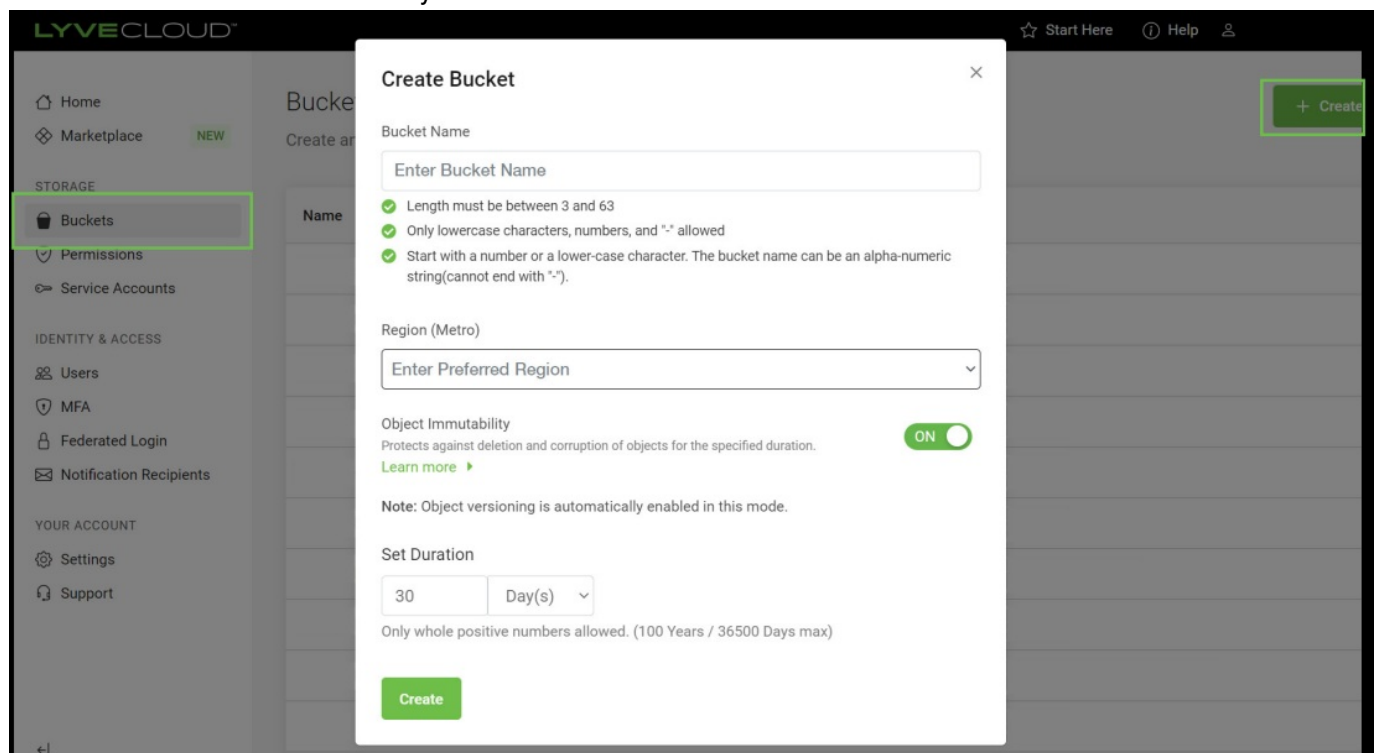
Lyve Cloud is an S3 – compatible storage as a service built for scalable backups, frictionless archival, and big-data analytics to support any sized workload. Lyve Cloud's flexible backend protected with Equinix's Tier 4 data center defense makes connecting to any multi-cloud environment secure and efficient.

Lyve Cloud's S3 compatible application programming interface (API) enables enterprises to easily connect to Lyve Cloud. S3 compatibility enables access to Lyve Cloud from any public or private internet service provider. After connecting to Lyve Cloud and the customer account is created, customers can follow these three simple steps to get started.

Task 1: Create Lyve Cloud Account

Step 1: Create Bucket

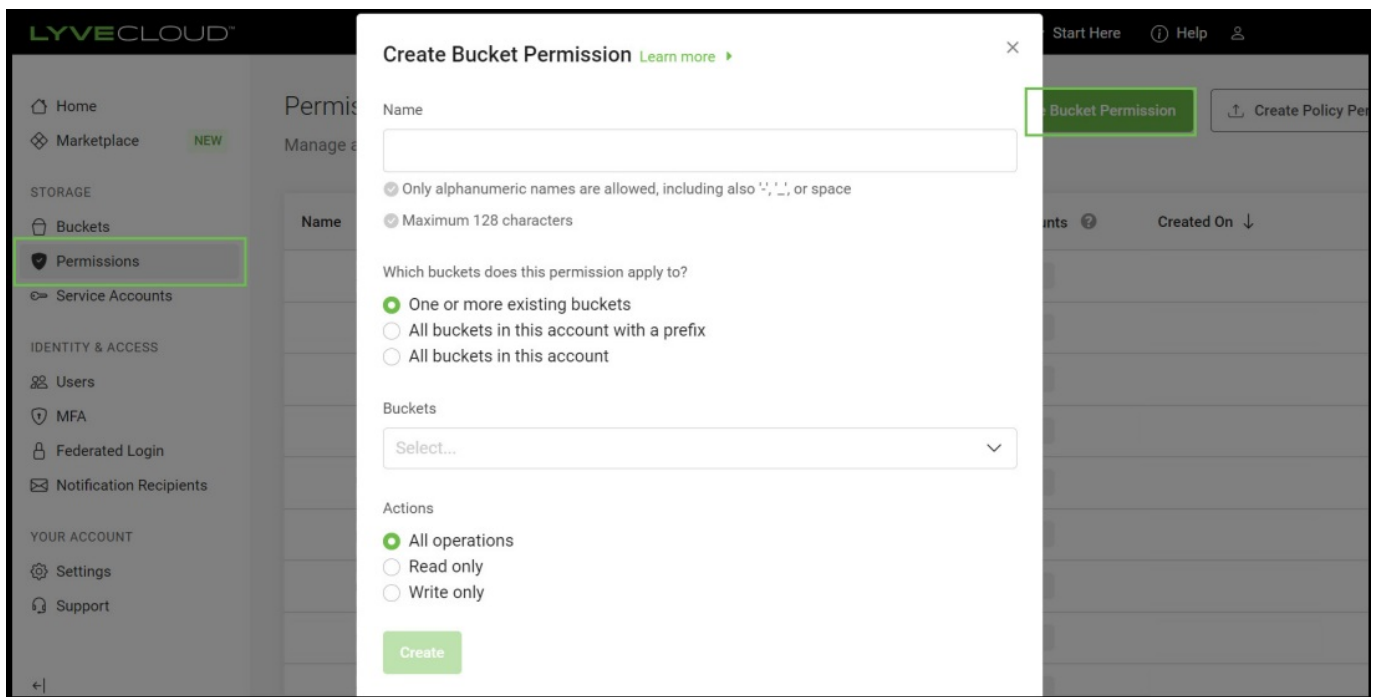
Go to the "Bucket" section of the Lyve Cloud Console and select the "Create Bucket" button.



The screenshot displays the Lyve Cloud Console interface. On the left, a sidebar menu includes 'Home', 'Marketplace', 'STORAGE' (with 'Buckets' highlighted), 'Permissions', 'Service Accounts', 'IDENTITY & ACCESS' (with 'Users', 'MFA', 'Federated Login', and 'Notification Recipients'), and 'YOUR ACCOUNT' (with 'Settings' and 'Support'). The main content area shows the 'Create Bucket' modal. The modal has a title bar with a close button. It contains the following fields and options: 'Bucket Name' with a text input and validation rules (length 3-63, lowercase/numbers/underscore, start with number or lowercase); 'Region (Metro)' with a dropdown menu; 'Object Immutability' with a toggle switch set to 'ON' and a 'Learn more' link; 'Set Duration' with a text input set to '30' and a 'Day(s)' dropdown; and a 'Create' button at the bottom. A note states: 'Note: Object versioning is automatically enabled in this mode.' The background shows a table of existing buckets and a '+ Create' button in the top right corner.

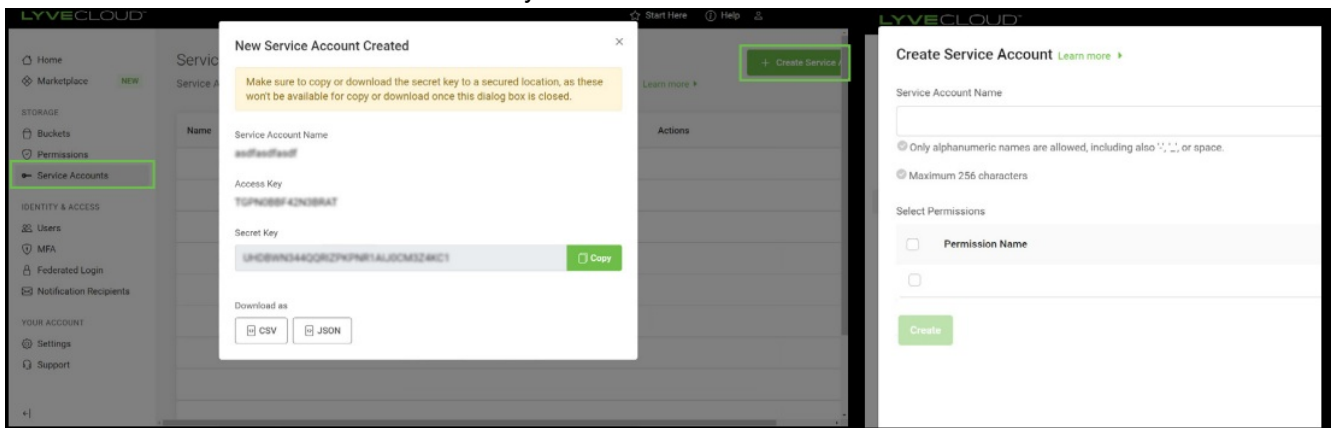
Step 2: Create Bucket Permission

Go to the "Permissions" section of the Lyve Cloud Console and select the "Create Bucket Permission" button.



Step 3: Create Service Accounts

Go to the “Service Accounts” section of the Lyve Cloud Console and select the “Create Service Account” button.




For more information on how to create a bucket, consult the [Lyve Cloud Quick Start Guide](#) or view the [Tutorial Videos](#).

Task 2: Connect with S3 Browser

Step 1: Add New Account

After installing S3 Browser, select 'Add New Account' under the 'Accounts' drop down to add a connection to Lyve Cloud.

Add New Account online help

 **Add New Account**
Enter new account details and click Add new account

Account Name:

Assign any name to your account.

Account Type:

Choose the storage you want to work with. Default is Amazon S3 Storage. Select 'S3 Compatible Storage' from the menu

REST Endpoint:
 Add Lyve Cloud host location
Specify S3-compatible API endpoint. It can be found in storage documentation. Example: rest.server.com:8080

Access Key ID:

Required to sign the requests you send to Amazon S3, see more details at <https://s3browser.com/keys>

Secret Access Key:

Required to sign the requests you send to Amazon S3, see more details at <https://s3browser.com/keys>

☐ Encrypt Access Keys with a password:

Turn this option on if you want to protect your Access Keys with a master password.

☒ Use secure transfer (SSL/TLS)
If checked, all communications with the storage will go through encrypted SSL/TLS channel

[Advanced S3-compatible storage settings](#) ✓ Add new account ✗ Cancel

Step 2: Select 'Advanced S3-compatible storage settings'

Secret Access Key:

Required to sign the requests you send to Amazon S3, see more details at <https://s3browser.com/keys>

☐ Encrypt Access Keys with a password:

Turn this option on if you want to protect your Access Keys with a master password.


☒ Use secure transfer (SSL/TLS)
If checked, all communications with the storage will go through encrypted SSL/TLS channel

[Advanced S3-compatible storage settings](#) ✓ Add new account ✗ Cancel

Step 3: Modify Advanced Settings

Path style is set by default and is the recommended setting.

Advanced S3-Compatible Storage Settings



Storage settings

Advanced settings for S3-compatible storage

[online help](#)

Signature version:

Signature V4

Select 'Signature V4'. Note, default value is Signature V2

▼

Choose supported signature version. Default value is Signature V2.

Addressing model:

Path style

Select 'Path style'

▼

Choose supported addressing model for your storage. Path style addressing is default value.

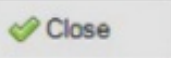
☐ Override storage regions

You may define custom regions here, format is Region Name=region-code, one region per line

Region-specific endpoint (optional):

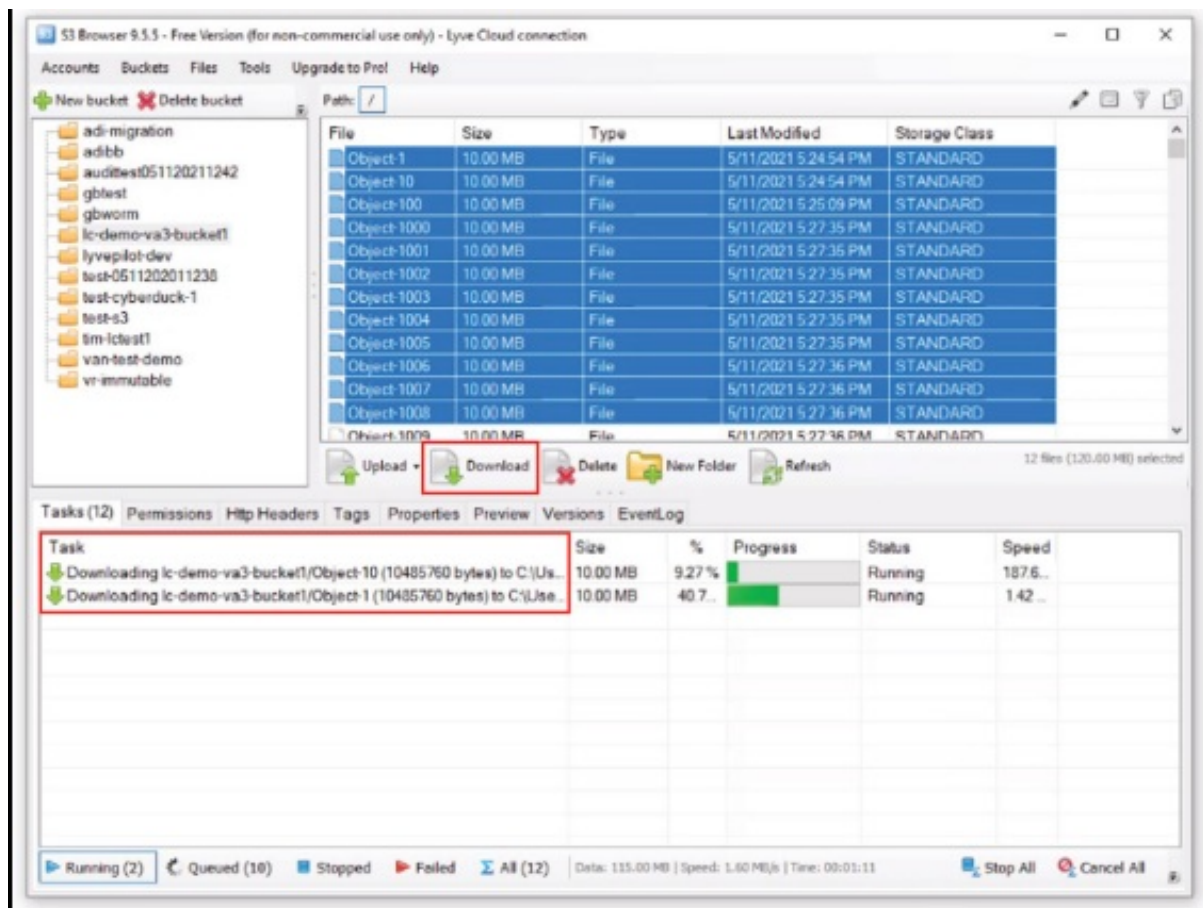
Specify endpoint using the {region-code} variable, for example s3.{region-code}.wasabisys.com

Click Close when completed



Step 4: Create Tasks

Upload data objects to your buckets or download object on-prem on the main navigation in S3 Browser.



Ready to Learn More?

Visit us at seagate.com/lyvecloud

seagate.com

© 2022 Seagate Technology LLC. All rights reserved. Seagate, Seagate Technology, and the Spiral logo are registered trademarks of Seagate Technology LLC in the United States and/or other countries. Lyve is either a trademark or registered trademark of Seagate Technology LLC or one of its affiliated companies in the United States and/ or other countries. All other trademarks or registered trademarks are the property of their respective owners. Seagate reserves the right to change, without notice, product offerings or specifications. SC391.1-2208US



Documents / Resources

	<p>SEAGATE LYVE Cloud Connecting S3 Browser with Cloud [pdf] User Guide LYVE Cloud Connecting S3 Browser with Cloud, LYVE Cloud, Connecting S3, Connecting S3 B rowser with Cloud, Connecting S3 Cloud, Browser with Cloud</p>
--	--

References

- [!\[\]\(694fcb4611893e9db5249daba48abfc1_img.jpg\) The Leader in Mass Data Storage Solutions | Seagate US](#)
- [!\[\]\(8ec8d5dc48934930a762fecf6ecbe179_img.jpg\) Lyve Cloud - Multicloud Freedom as a Service | Seagate US](#)

Manuals+.