



SEAGATE FireCuda Gaming Hub Installation Guide

[Home](#) » [Seagate](#) » SEAGATE FireCuda Gaming Hub Installation Guide 

Contents

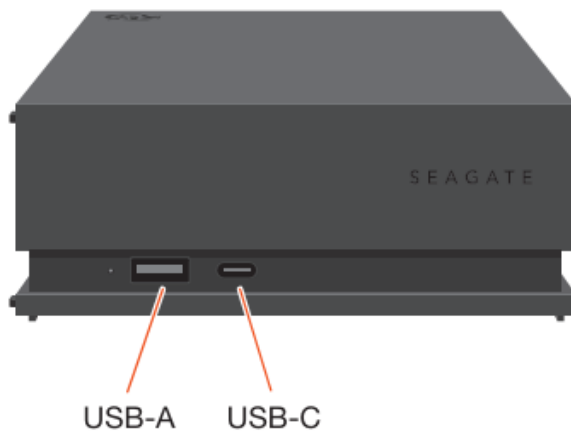
- [1 SEAGATE FireCuda Gaming Hub Installation Guide](#)
- [2 Front](#)
- [3 Hub ports](#)
- [4 Back](#)
- [5 Computer port and power](#)
- [6 Set up FireCuda® Gaming Hub](#)
- [7 Connect power cable](#)
- [8 Register FireCuda Gaming Hub and download Toolkit installer](#)
- [9 Learn more](#)
- [10 Next level illumination](#)
- [11 WWW.SEAGATE.COM](#)
- [12 FCC DECLARATION OF CONFORMANCE](#)
- [13 CLASS B](#)
- [14 Read More About This Manual & Download PDF:](#)
- [15 Documents / Resources](#)
 - [15.1 References](#)

SEAGATE FireCuda Gaming Hub Installation Guide



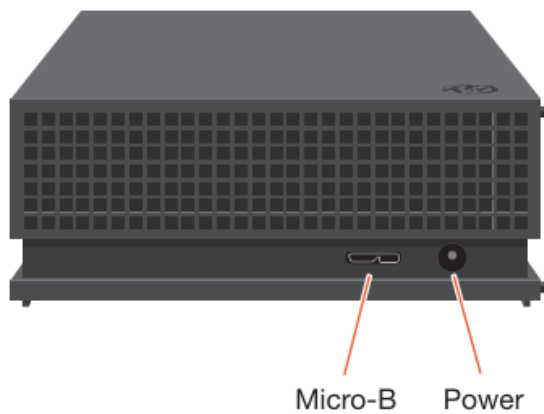
Front

Hub ports



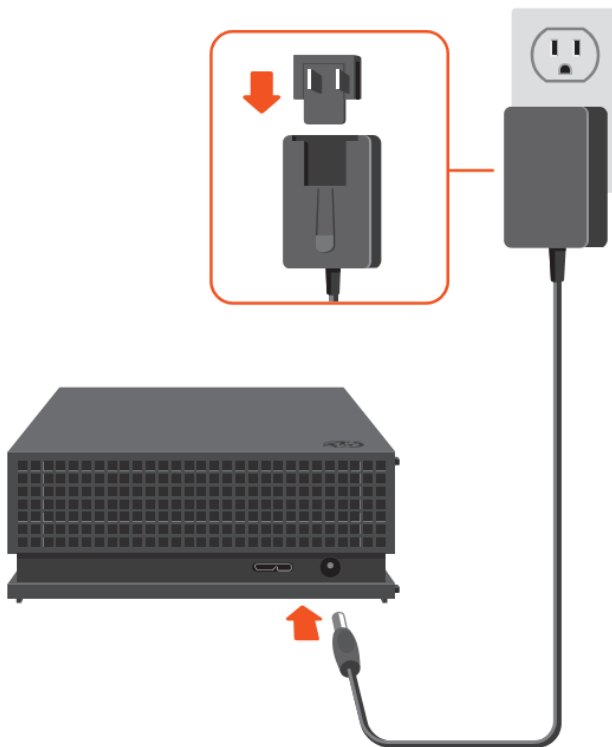
Back

Computer port and power

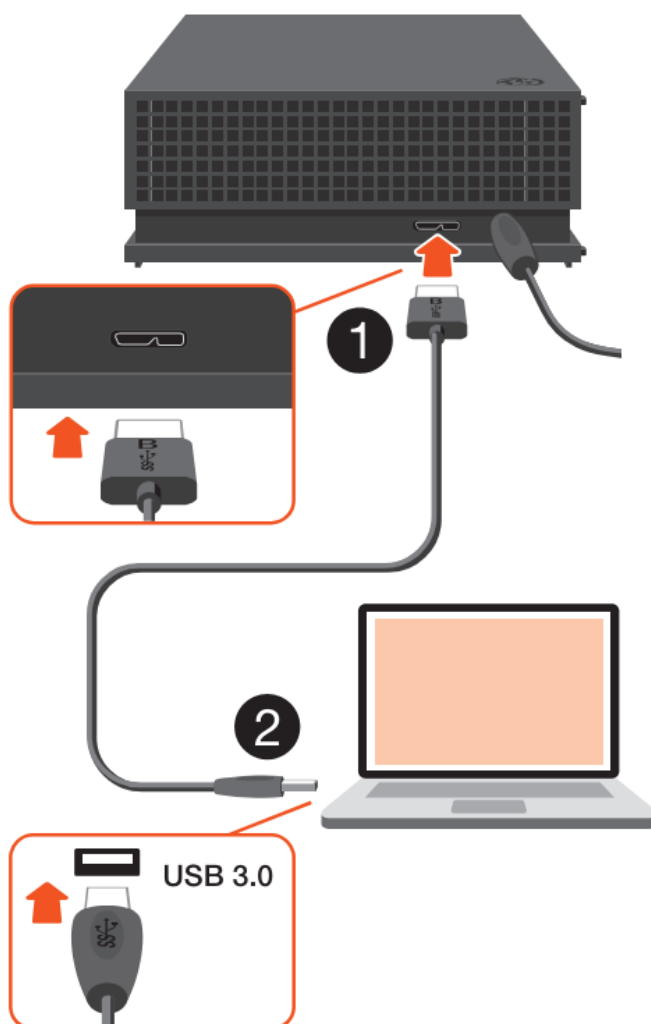


Set up FireCuda® Gaming Hub

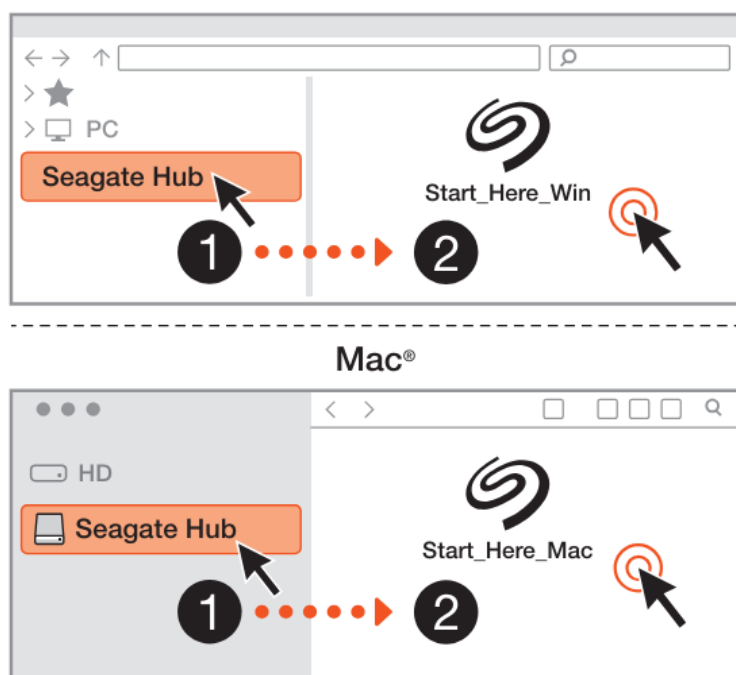
Connect power cable



Connect cable



Register FireCuda Gaming Hub and download Toolkit installer



Redeem when you register your product

Learn more



www.seagate.com/manuals/firecuda-gaming-hub



www.seagate.com/support/firecuda-gaming-hub

Next level illumination

Get creative with your RGB! Download and install the Toolkit app to manage colors and design new patterns.



www.seagate.com/toolkit

WWW.SEAGATE.COM

Mac: This drive is preformatted exFAT for use with both PC and Mac. For Time Machine, it must be reformatted for Mac. Reformatting will delete all data previously stored on the drive. www.seagate.com/time-machine

Note: To protect your data, always follow the safe removal procedures for your operating system when disconnecting your product.

Review details of your FireCuda Gaming Hub's warranty by opening the Seagate Limited Warranty Statement on your drive or go to www.seagate.com/warranty. To request warranty service, contact an authorized Seagate service center or refer to www.seagate.com/support/firecuda-gaming-hub for more information regarding customer support within your jurisdiction.

FCC DECLARATION OF CONFORMANCE

This device complies with Part 15 of the FCC Rules. Operation is subject to the following two conditions: (1) this device may not cause harmful interference, and
(2) this device must accept any interference received, including interference that may cause undesired operation.

CLASS B

This equipment has been tested and found to comply with the limits for a Class B digital device, pursuant to Part 15 of the FCC Rules. These limits are designed to provide reasonable protection against harmful interference in residential installation. This equipment generates, uses, and can radiate radio frequency energy and, if not installed and used in accordance with the instructions, may cause harmful interference to radio communications.

However, there is no guarantee that interference will not occur in a particular installation. If this equipment does cause harmful interference to radio or television reception, which can be determined by turning the equipment off and on, the user is encouraged to try to correct the interference by one or more of the following measures:

- Reorient or relocate the receiving
- Increase the separation between the equipment and
- Connect the equipment into an outlet on a circuit different from that to which the receiver is
- Consult the dealer or an experienced radio/TV technician for

CAUTION: Any changes or modifications made to this equipment may void the user's authority to operate this equipment.

For Australian Customers Only.

Our goods come with guarantees that cannot be excluded under the Australian Consumer Law. You are entitled to a replacement or refund for a major failure and for compensation for any other reasonably foreseeable loss or damage. You are also entitled to have the goods repaired or replaced if the goods fail to be of acceptable quality and the failure does not amount to a major failure. Revision – July 1, 2020




Disposal of waste equipment by users in private households in the European Union

This symbol on the product or in its packaging indicates that this product must not be disposed of with your other household waste. Instead, it is your responsibility to dispose of your waste equipment by handing it over to a designated collection point for recycling of waste electrical and electronic equipment. The separate collection and recycling of your waste equipment at the time of disposal will help to conserve natural resources and ensure that it is recycled in a manner that protects human health and the environment. For more information about where you can drop off your waste equipment for recycling, contact your local city office, your household waste disposal service, or the shop where you purchased the product.

Read More About This Manual & Download PDF:

Documents / Resources

	<p>SEAGATE FireCuda Gaming Hub [pdf] Installation Guide FireCuda Gaming Hub, FireCuda, Gaming Hub, Hub</p>
---	--

References

- [Que Faire de mes Déchets ? Découvrez les solutions pour tous vos déchets et nos conseils pour en produire moins.](#)
- [The Leader in Mass Data Storage Solutions | Seagate US](#)
- [The Leader in Mass Data Storage Solutions | Seagate UK](#)
- [Apple Time Machine 101 | Support Seagate US](#)
- [Warranty & Replacements | Support Seagate US](#)
- [User Manual](#)

Manuals+. [Privacy Policy](#)

This website is an independent publication and is neither affiliated with nor endorsed by any of the trademark owners. The "Bluetooth®" word mark and logos are registered trademarks owned by Bluetooth SIG, Inc. The "Wi-Fi®" word mark and logos are registered trademarks owned by the Wi-Fi Alliance. Any use of these marks on this website does not imply any affiliation with or endorsement.