

SEAFLO 05 Electromagnetic Float Switch



SEAFLO 05 Electromagnetic Float Switch Instruction Manual

[Home](#) » [SEAFLO](#) » SEAFLO 05 Electromagnetic Float Switch Instruction Manual 

Contents

- [1 SEAFLO 05 Electromagnetic Float Switch](#)
- [2 Product Information](#)
- [3 Product Usage Instructions](#)
- [4 Introduction](#)
- [5 FEATURES](#)
- [6 ELECTRICAL INFORMATION](#)
- [7 DIMENSIONS](#)
- [8 INSTALLATION](#)
- [9 REPAIR KITS](#)
- [10 Documents / Resources](#)
 - [10.1 References](#)



SEAFLO 05 Electromagnetic Float Switch



Product Information

The Electromagnetic Float Switch is designed with innovative electromagnetic technology and features an enclosed construction for advanced reliability. The quick attach base allows for simple maintenance, and it is compatible with any manual bilge pump up to 25 Amps. Additionally, this float switch is mercury-free.

Specifications:

- **Max Amps:** 25A
- **Wire Length:** 1M/39.27
- **Wire Gauge Size:** 14AWG
- **For Use with:** 12V, 24V, and 32V DC Voltage Only

Installation:

Ensure the float switch is positioned at the lowest point in the bilge, with the base of the switch level with or below the base of the bilge pump. Connect the black wire to the negative pole (-) and the brown and white wires (for pump) to the positive pole (+). Seal all wire connections with a marine sealant and ensure proper insulation or cable sheathing above the highest bilge level.

Product Usage Instructions

When the bilge water level rises, the magnet floating inside the switch rises, forcing air out through a vent hole. The pump activates when the water reaches 45-50mm (1.77"-1.97"). The float remains in the start position due to vacuum until the water level drops to 20-25mm (0.79"-0.98"), at which point air enters, causing the float to fall and cut off power.

Repair Kits:

1. Upper cover – 1
2. Seal for wire – 1
3. Sensing circuit board – 1

4. Main circuit board – 1
5. Middle cover – 1
6. Magnet float – 1
7. Float cover – 1
8. Under cover filter – 1

FAQ:

- **Q: How do I know if the float switch is compatible with my pump?**

A: The float switch is designed to work with manual bilge pumps up to 25 Amps. Ensure your pump falls within this range for optimal performance.

- **Q: Can I use this float switch with a higher voltage than 32V DC?**

A: No, this float switch is recommended for use with 12V, 24V, and 32V DC voltage only. Using a higher voltage may damage the switch.

Introduction

SEAFLO's Electromagnetic Float Switch offers superior performance over competing float switches. The design's enclosure helps eliminate large debris from reaching the switch mechanism, which is the number one point of failure on traditional switches, in addition, its innovative Electromagnetic design uses a magnetic force to actuate seal failure and water intrusion which is the second most common cause of failure on competing brand's switch. Its unique robust internals also allows this switch to be used for pumps drawing up to 25 Amps. This original design makes this the most reliable float switch readily available on the market today!

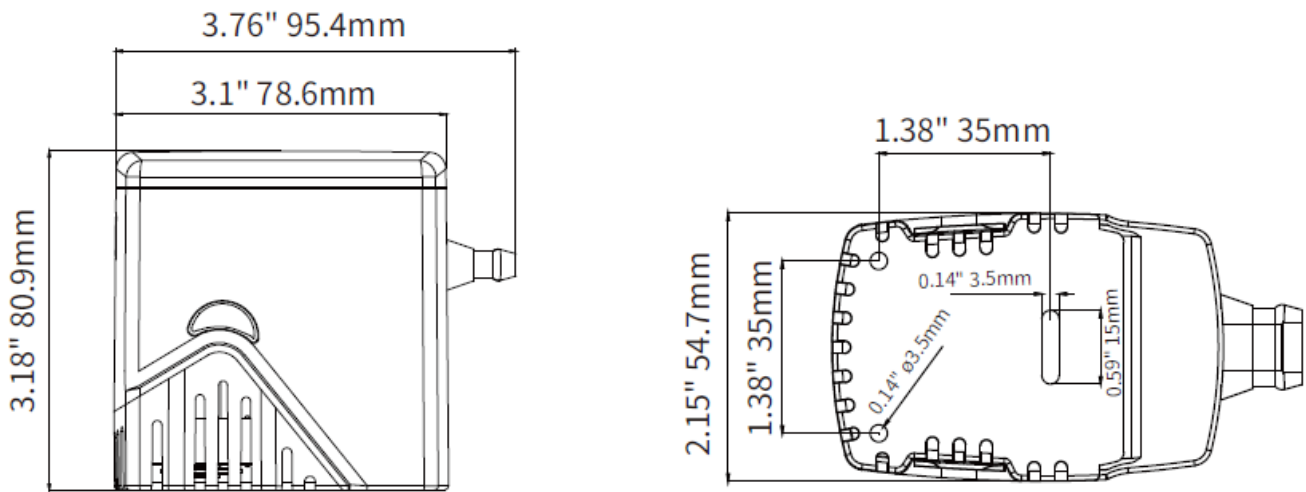
FEATURES

- Innovative Electromagnetic Design
- Enclosed Construction Offers Advanced Reliability
- Quick Attach Base Offers Simple Maintenance
- Works with Any Manual Bilge Pump
- Designed for Pumps Up To 25 Amps
- Mercury Free

ELECTRICAL INFORMATION

- **Max Amps:** 25A
- **Wire Length:** 1M/39.27"
- **Wire Gauge Size:** 14AWG
- For Use with 12V, 24V and 32V DC Voltage Only

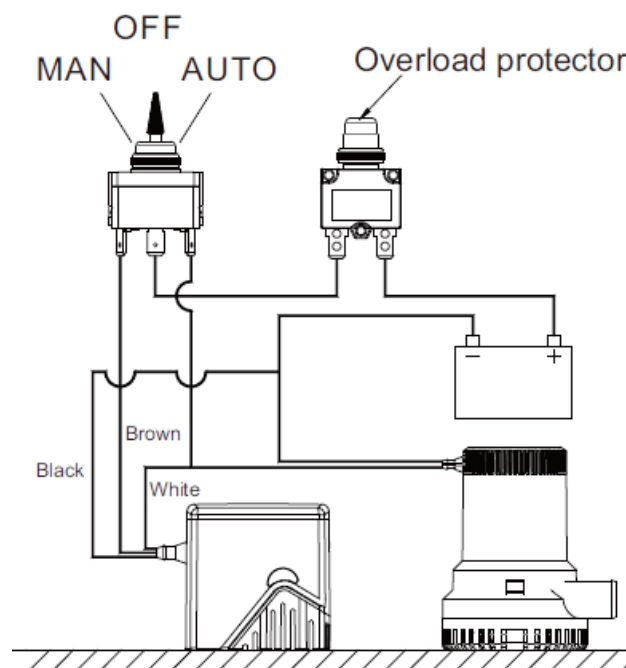
DIMENSIONS



INSTALLATION

TIPS FOR WIRE CONNECTION

- The float switch should be located at the lowest position in the bilge and mounted with a base of the switch even or below the base of the bilge pump. When installing, keep in mind that the black line is connected to the negative pole (-) and the brown and white (pump) is connected to the positive pole(+).
- The wire connections must be sealed with a marine sealant.
- Insulation or cable sheathings must be placed above the highest bilge.

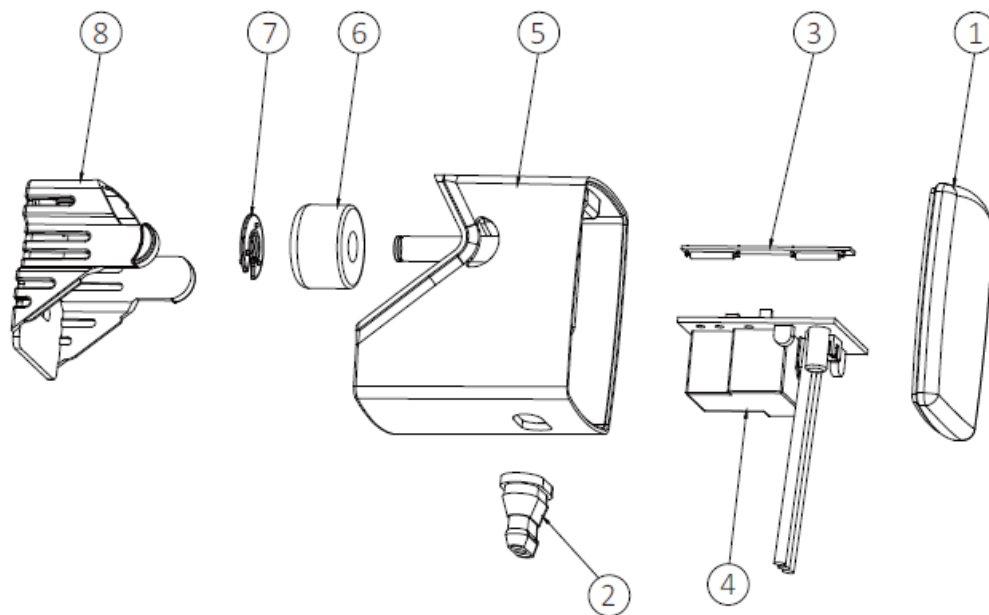


Instruction:

- When the bilge water rises the magnet float floats up and the air in the float house is forced out through the vent hole
- The magnet float starts the pump when bilge water reaches 45-50mm(1.77"-1.97"). The valve closes and the magnet float stays in the start position due to the vacuum inside the float house.
- When the bilge water has sunk to level 20-25mm(0.79"-0.98"), the air is let in through the air opening in the float

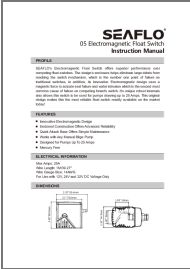
house. The magnet float falls and cuts off the power.

REPAIR KITS



Key	Description	Quantity
1	Upper cover	1
2	Seal for wire	1
3	Sensing circuit board	1
4	Main circuit board	1
5	middle cover	1
6	Magnet float	1
7	Float cover	1
8	Under cover filter	1

Documents / Resources

	<p>SEAFLO 05 Electromagnetic Float Switch [pdf] Instruction Manual</p> <p>05 Electromagnetic Float Switch, 05, Electromagnetic Float Switch, Float Switch, Switch</p>
--	---

References

- [User Manual](#)

[Manuals+.](#) [Privacy Policy](#)

This website is an independent publication and is neither affiliated with nor endorsed by any of the trademark owners. The "Bluetooth®" word mark and logos are registered trademarks owned by Bluetooth SIG, Inc. The "Wi-Fi®" word mark and logos are registered trademarks owned by the Wi-Fi Alliance. Any use of these marks on this website does not imply any affiliation with or endorsement.