

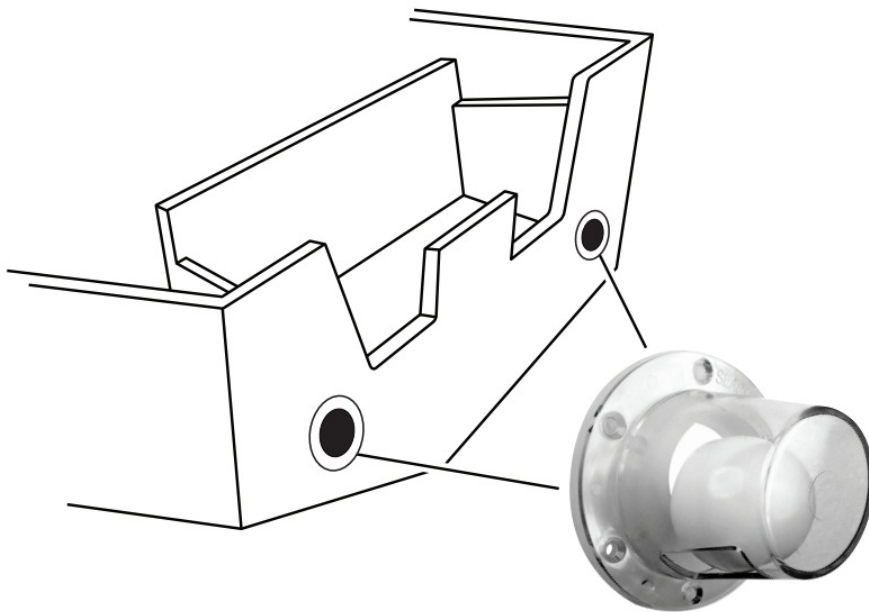


SEACHOICE Scupper Self Bailing Scupper Large Clear Instruction Manual

[Home](#) » [SEACHOICE](#) » SEACHOICE Scupper Self Bailing Scupper Large Clear Instruction Manual 



Scupper Self Bailing Scupper Large Clear Instruction Manual



INSTALLATION INSTRUCTIONS

Contents

[1 Scupper Self Bailing Scupper Large Clear](#)

[2 Documents / Resources](#)

[3 Related Posts](#)

Scupper Self Bailing Scupper Large Clear

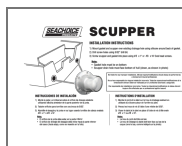
1. Mount gasket and scupper over existing drainage hole using silicone around back of gasket.
2. Drill screw holes using 5/32" drill bit.
3. Screw scupper and gasket into place using #8 x 1" or #8 x 3/4" Oval head screws.

Note:

- Gasket hole must be on bottom
- Scupper drain hole must face bottom of hull (down, as shown in photo)

Not liable for any improper installations. All boat repairs/modifications should always be performed by a licensed and insured professional.

Documents / Resources



[SEACHOICE Scupper Self Bailing Scupper Large Clear](#) [pdf] Instruction Manual
Scupper Self Bailing Scupper Large Clear, Scupper, Self Bailing Scupper Large Clear, Scupper Large Clear