



sea LP428s Loudspeaker Processor User Manual

[Home](#) » [SEA](#) » sea LP428s Loudspeaker Processor User Manual 

sea LP428s Loudspeaker Processor User Manual



Contents

- [1 Important Safety Instruction and symbol description](#)
- [2 Foreword](#)
- [3 Welcome](#)
- [4 Unpacking](#)
- [5 Important safety precautions](#)
- [6 Front Panel Function](#)
- [7 Rear Panel Function](#)
- [8 DSP instructions](#)
- [9 Software instructions](#)
- [10 USB driver manual installation](#)
- [11 Specifications](#)
- [12 Warranty](#)
- [13 Documents / Resources](#)
- [14 Related Posts](#)

Important Safety Instruction and symbol description

1. Read these rules.
2. Keep this instruction manual.
3. Pay attention to all the warning.
4. Follow these provisions.
5. Warning: do not place the device in rain or wet environment, to avoid catching fire or electric shock.
6. Only dry rag can be used to clean.
7. Do not block the air-vent. The installation should be according to manufacturer/s instruction.
8. Do not install near the heat source which such as radiators, stoves and others(include amplifiers) can produce heat.
9. Do not disable the security of the ground pin. This device should be linked to socket through safe ground

connection.

10. Take care of the electric wire without trampling and squeezing, Especially pay attention to the plug, the power sockets and other connectors.
11. The voltage which indicated on the rear panel must be used. If the device damage is caused by using improper voltage, it will be repaired out of warranty.



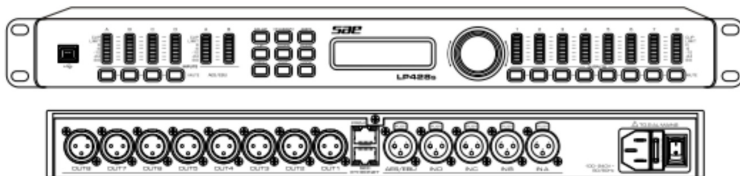
When you see this sign, it means these are important information.



Dangerous without insulated sections are in the device, which can electrify people. So do not open the cover. The device must be repaired by professionals or returns to the manufacturer.

Foreword

Welcome



LP428 is a newly developed professional speaker 'D CJ management from our company. And it can work with computer. Please download the control software from our company brand website. balanced input, and Matching impedance output. Please read this manual carefully.

Unpacking

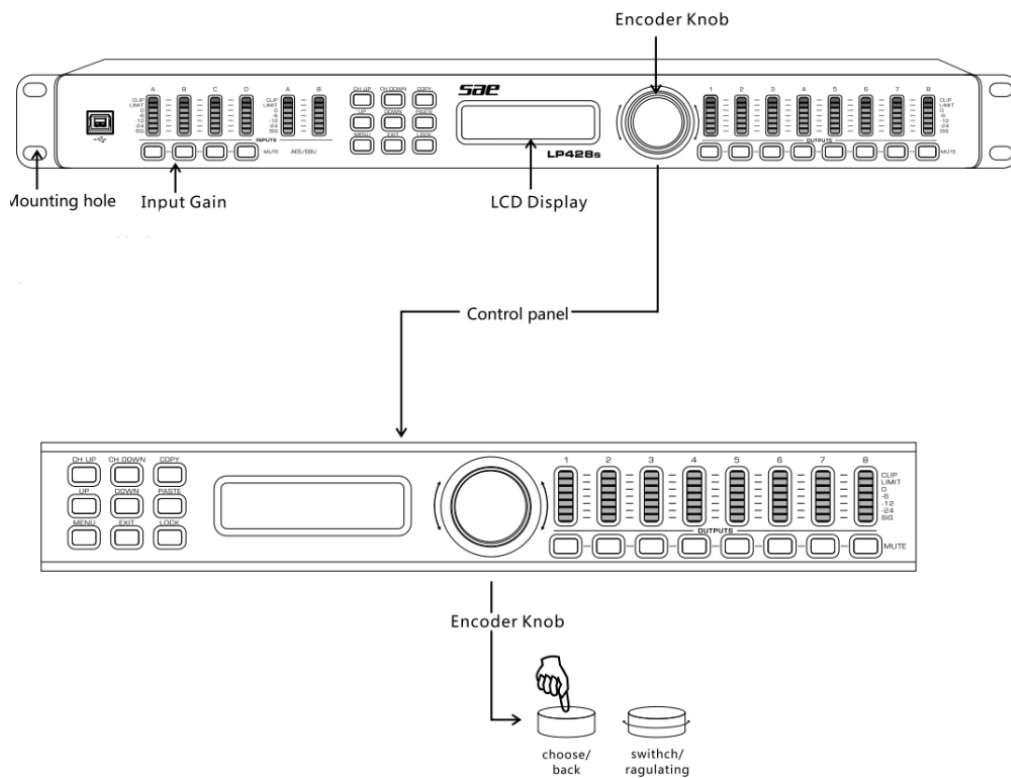
Please make sure if the appearance of the power amplifier was damaged or not during the transportation after you opened the package. Please make sure the preset voltage is matched with your local AC voltage (please check it on the rear panel of the power amplifier). We suggest you retain the package in case you need them for further transportation.

Important safety precautions

The design of SAE products has already taken the safe requirement into consideration and all the finished products have been tested under the requirement of the government before sale. Users should read the notice in this manual before operation as there is dangerous high voltage and electricity inside the products. It will increase the chance of getting shock by the electricity if the product falls down, recess in the appearance, soaked or there were some parts loose internal. If there are problems above, please turn off power immediately and send the defective units to local distributor for service.

Front Panel Function

Front panel



Input signal led(A,B)

- CLIP → When the input signal overload lights
- LIMIT → When the input signal reaches a peak lights
- 0 → Distance the clipping value 0db
- -6 → Distance the clipping value -6dB
- -12 → Distance the clipping value -12dB
- -24 → Distance the clipping value -24dB
- SIG → When the signal input lights

Control key: Encoder Knob

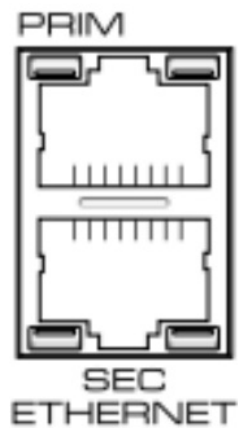
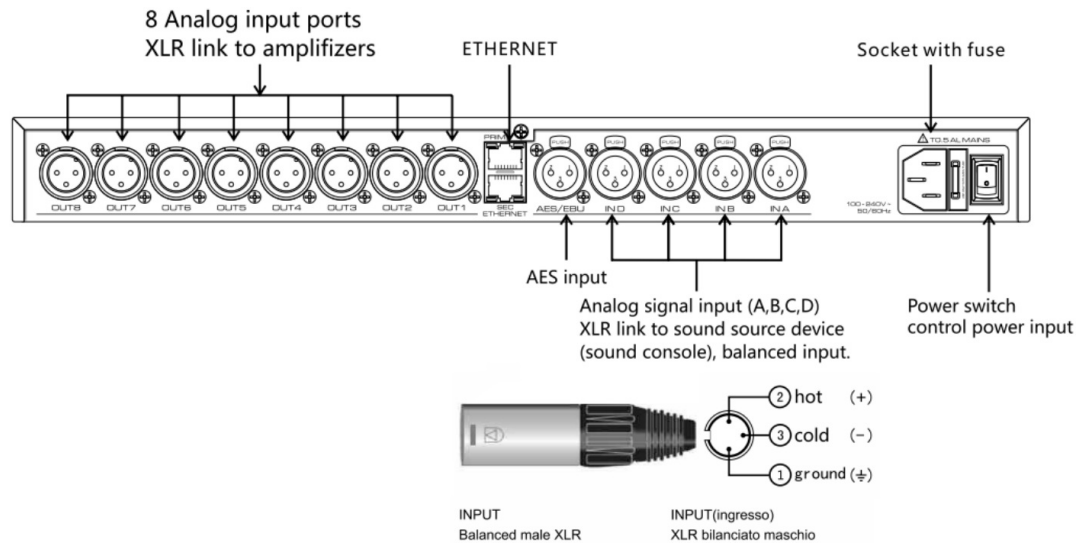
- CHANNEL UP ▲ → Up channel swathing
- CHANNEL DOWN ▼ → Down chanel swathing
- ITEM UP ▲ → Up value regulating
- ITEM DOWN ▼ → Down value regulating
- MUNE → Back main mane
- EXIT → Stop. exit the pretty value

Onput signal led(1-8)

- CLIP → When the input signal overload lights
- LIMIT → When the input signal reaches a peak lights
- 0 → Distance the clipping value 0db
- -6 → Distance the clipping value -6dB
- -12 → Distance the clipping value -12dB
- -24 → Distance the clipping value -24dB
- SIG → When the signal input lights

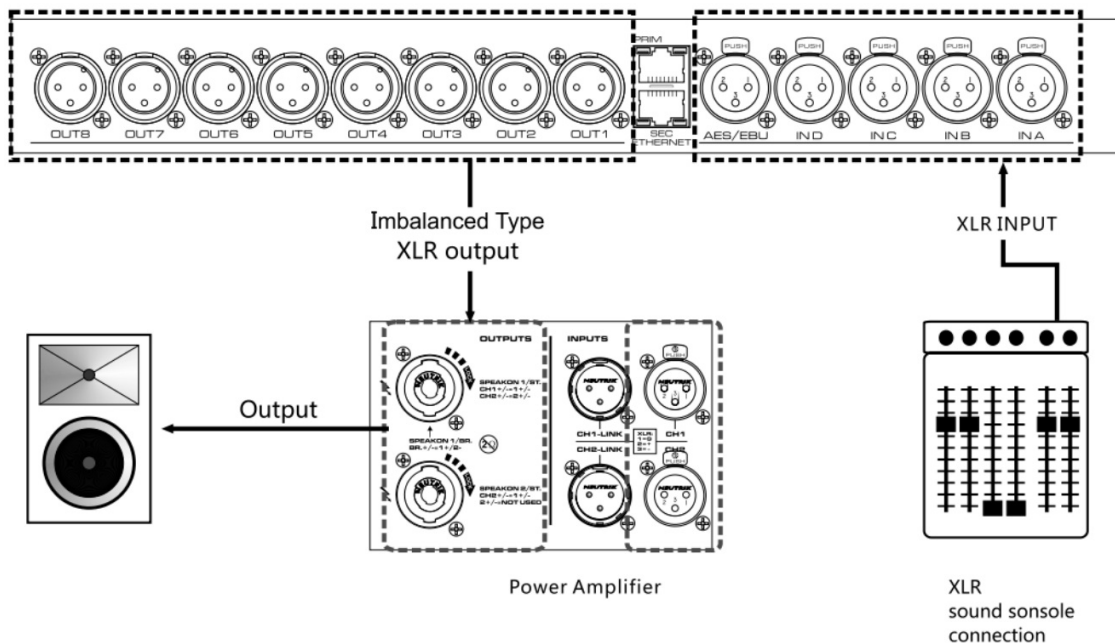
Rear Panel Function

Rear Panel

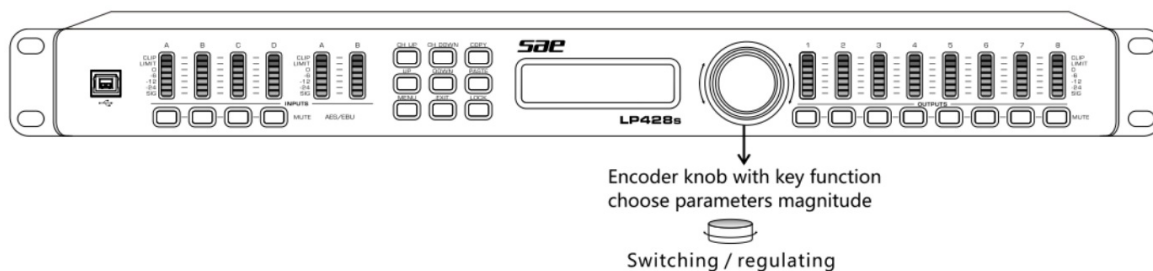


Cable connection requirements:

1. Direct connection (the circuit is directly connected to the machine), one end needs to press 568A standard, Another end according to 5688 standard;
2. Connect to the switch. Both ends need to be connected by 568A(or 568B) network cables.

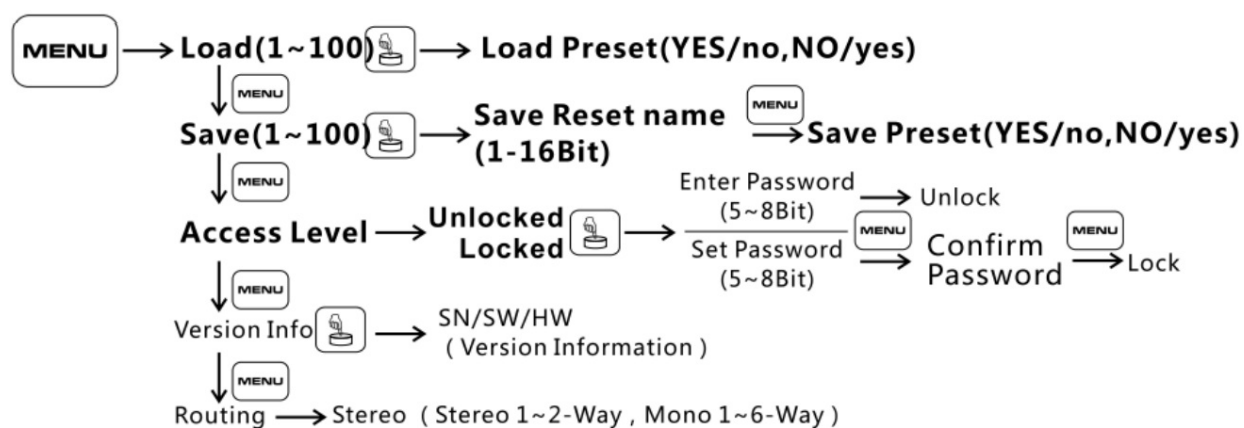


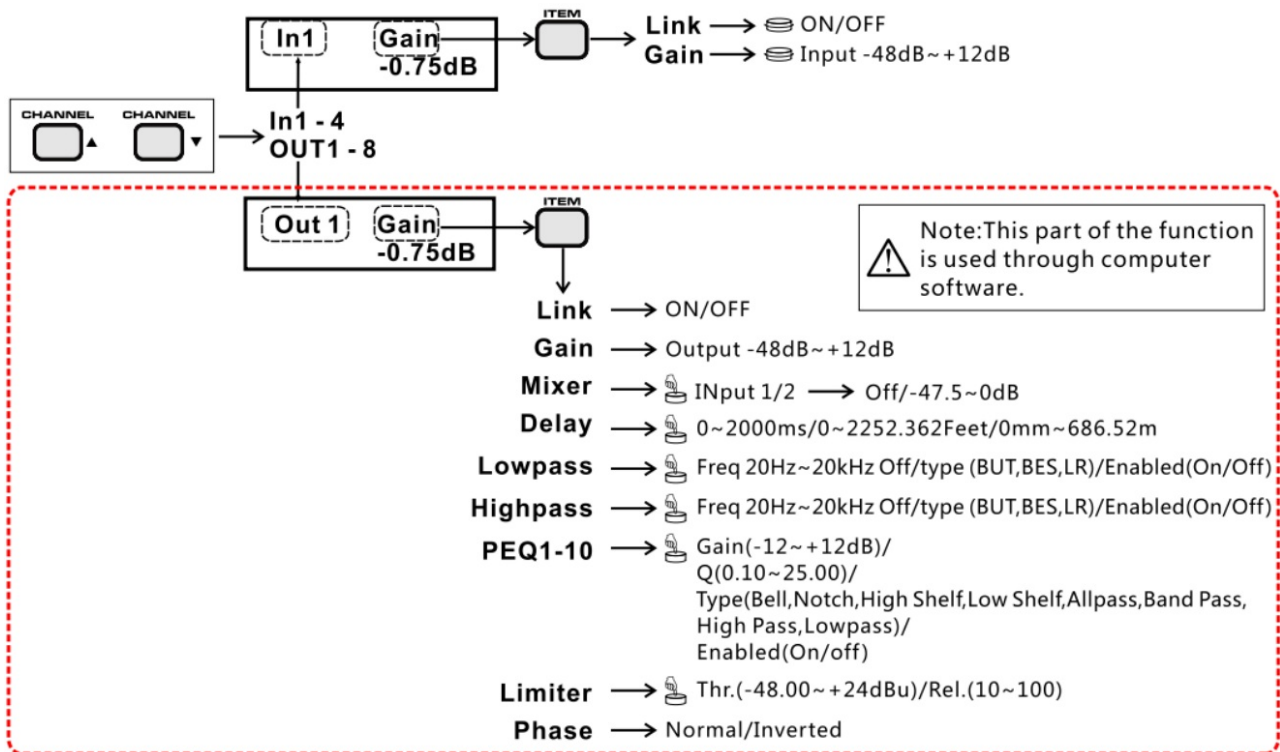
DSP instructions



Note: The local buttons only select Preset, Please connect to the computer software use of other functions.

Set up flow chart (see figure below) .for reference only





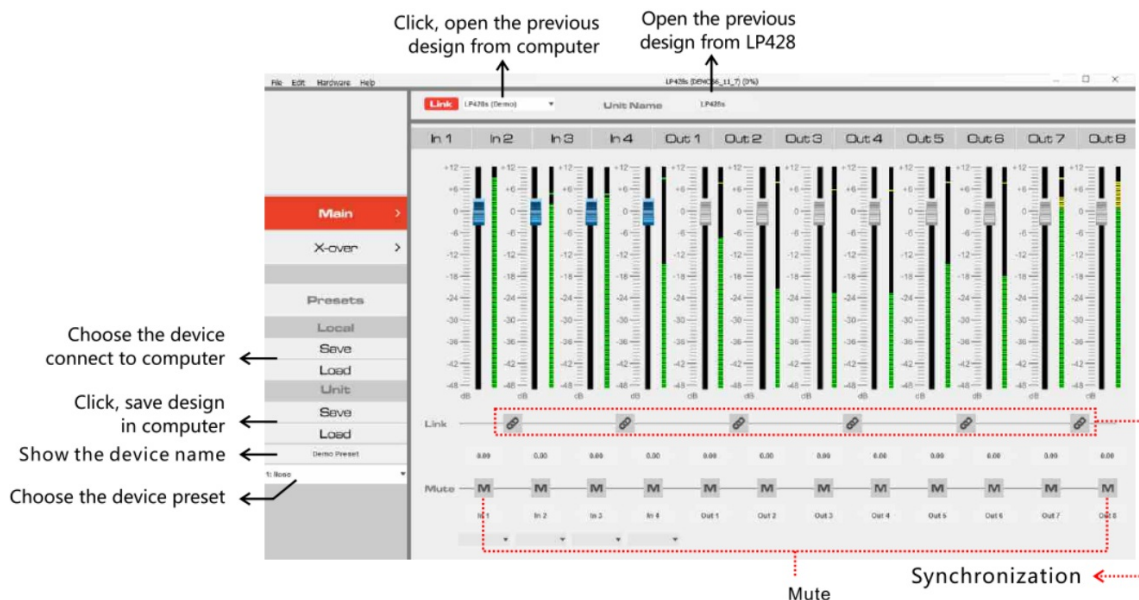
Software instructions

Software interface introduction

1. Equipment state control panel



2. Main interface



.X-OVER interface



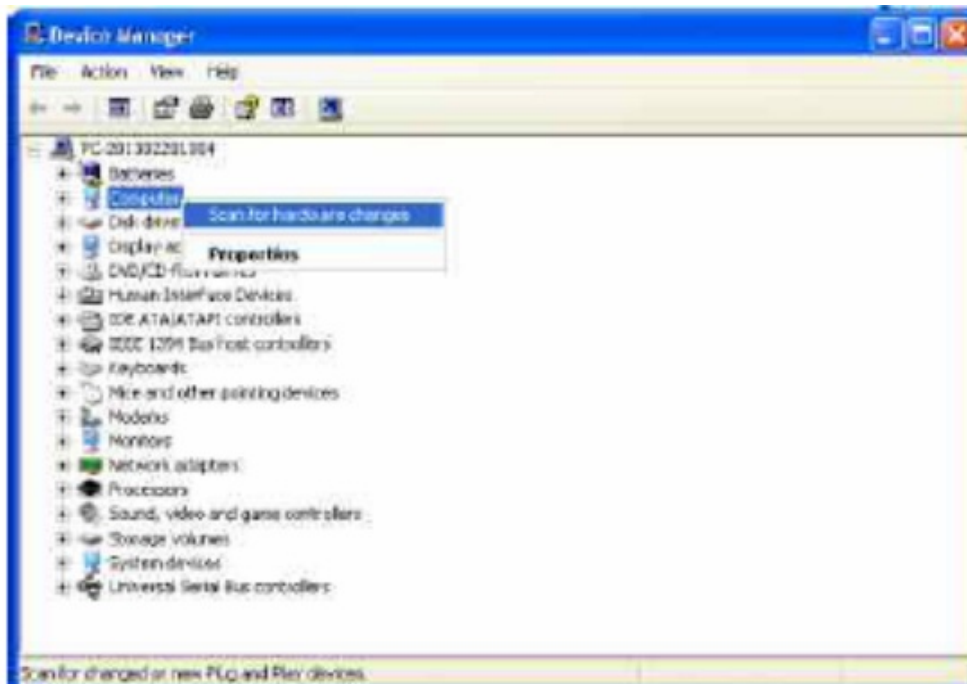
3. OUTPUT interface



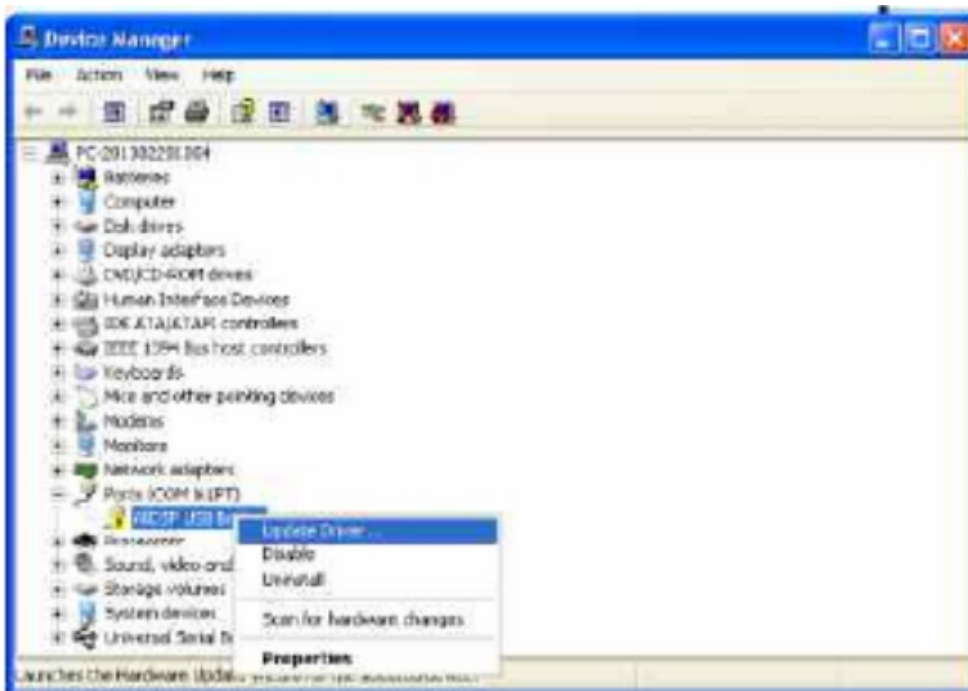
USB driver manual installation

1. After setting up the PC software, connect LP428 with computer, if the computer can not recognize automatically, please right-click computer in the (Device Manager , and click scan for hardware change.

as the ight picture



2. As Pic 2 shows, exclamation mark or question mark appear. Right click the mark, click update Driver.
- as the ight picture



3. Hardware update wizard appears, if click reinstall the software automatically , can not install, then click install from a list or specific location , and then click Next to continue.

as the right picture

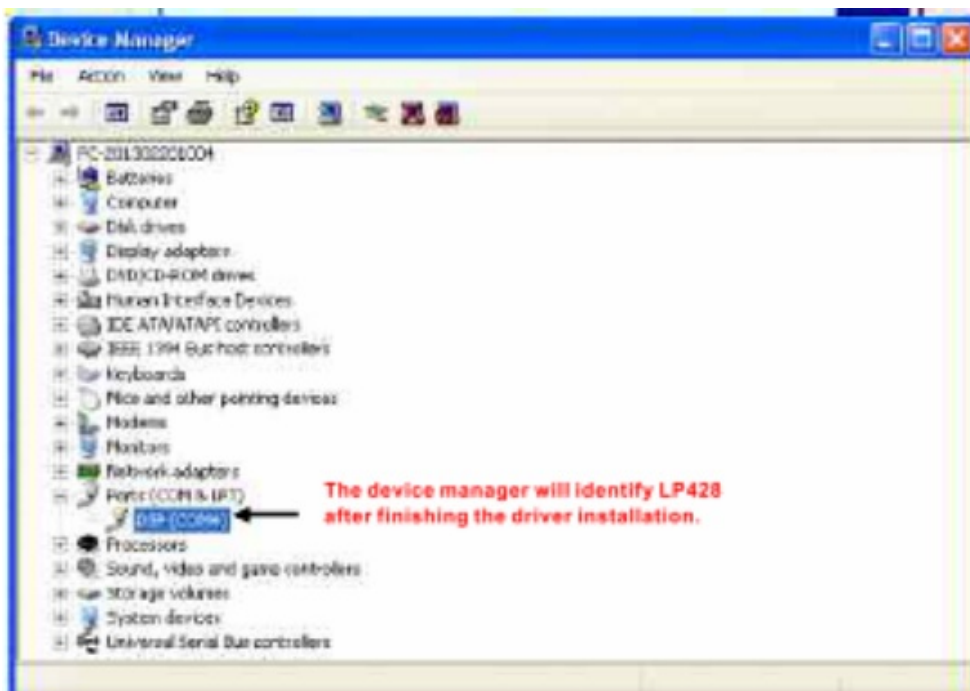


4. Tick the option reinclude thin location in the search and select the path of the installer drivers in the blank. (You should select your own path if you change the default path of the installer.)And then Click cNeXT to continue, if still can not search the file to install, you can click don't search's ,choose DSP and continue to install.

as the right picture



5. The device manager will identify LP428 after finishing the driver installation. Now, the device can be connected.
as the right picture



Remind:

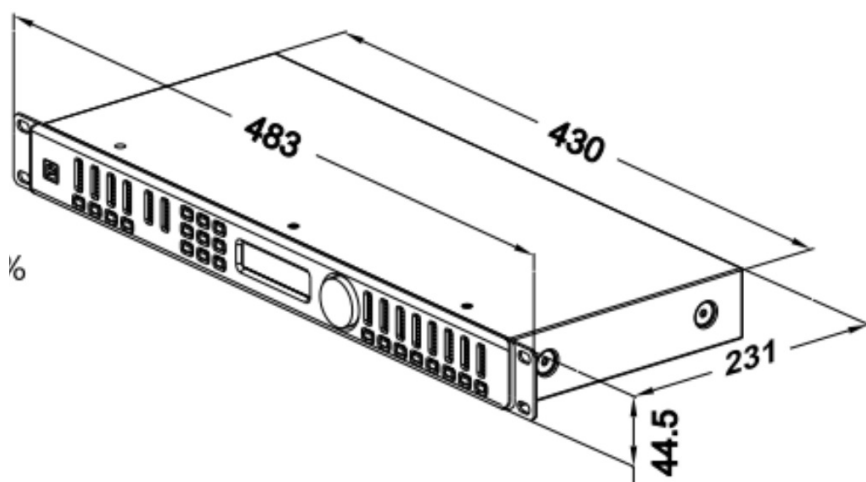
Because the languages of Windows XP are different, the menu translation maybe is not the same in English system. However, the shortcut keys are similar, so please refer to them to help you.

Specifications

Model	LP428s
Input	4 ways Balanced Type.
Output	8 ways Imbalanced Type

Input Impedance	bal 20k / unbal 10k
Output Impedance	< 100ohms.
Output Gain	From +12dB to -48dB, 0.25dB increment
Input Gain	From +12dB to -48dB, 0.25dB increment
Other Parameters	
Frequency Response (-0.3dB)	20Hz – 20kHz
THD+N	<0.003%
Maximum input delay	2s
Maximum output delay	50ms
Dynamic Range(A weighting)	2115dB
Converts Frequency (high pass/ low pass)	20Hz – 20kHz, 1Hz increment
Centre Frequency (high pass/ low pass)	20Hz – 20kHz, 1/36 octave (19980 positions) increment
Minimum Load Impedance	600 ohms
Maximum Output Level	+18dBu (600 ohms load)
Filter Gain	From +12dB to -12dB, 0.25dB increment
High Pass & Low Pass Filter	Q value 0.2-25 adjustable, 0.1 increment/ 10 bands/1 filter each output channel, open and close
FIR Filter	8 x 800taps
Frequency Response	Bessel/ Butterworth 6/12/18/24dB each octave, and Linkwitz-Riley 24dB/ octave
Protect Function	system can be set code which can prevent unauthorized person operation.
Connectors	
Input Section	3 cores XLR F socket
Output Section	3 cores XLR M socket
USB Connector	Square
Power Socket	3 cores ICE socket
Input Limiter	Threshold +24dBu to -48dBu
Output Limiter	Threshold +12dBu to -48dBu
Start-up Time	0
Release Time	1-100
Sampling Rate	96kHz
Phase	180° phase

LCD Display	2*16 character type LCD display
Input Level Match	2*7 points, -30dB to clip
Output Level Match	6*7 points, -30dB to clip
Preset	More than 100 PCS preconfigured/more than 100 PCS preconfigured.
Language Options	English, Germany, Spanish, French, Dutch
Version Information	The version information of hardware, software, DSP module
Size/Power cord	
Product Contour Size	482x231x44.5 (1U)
Outer Packing Size	525x300x110 (1U)
Power Consumption	<10w 6.5A Power cord
Power	100-240V ~/50-60Hz +10%



Cautions:

SAE reserves the right to make changes in specification without prior notice. The final specification is subject to the user manual.

Warranty

Disclaimer

SAE Audio Co., Ltd. offers 2 years limited warranty for this product.

SAE Audio Co., Ltd. is not responsible for any damage of loudspeakers or other equipment's caused by negligence or improper installation. SAE Audio Co., Ltd. offers 2 years limited warranty for this product. SAE Audio Co., Ltd. Guarantees that this product has no material defect during two years from the sales date; if the damage caused under the normal installation and operation, SAE Audio Co., Ltd. shall change the defective component and repair faulty product for free according to this Quality Guarantee Agreement. However, users must send the product to our factory or any authorized maintenance points or designated distributors, affording the re-paid freight, together with buying proof (including customer copy of product warranty card and payment receipt or invoice copy). As per this Quality Guarantee Agreement, the returned product must be judged having manufacturing defect it self after our inspection. This agreement doesn't apply for products with damage caused by any wrong operation negligence, accident, inappropriate installation or products with no date code and sequence no or damaged ones beyond recognition.

SAE Audio Co., Ltd. shall not afford responsibility for any damage caused by accident or indirect factors.
The agreement authorized you specific legal rights.

Address:

SAE Audio Co., Ltd. After Sale Department
No.39,East,Wenjiao Road ,Heshun,L ishu ,Nanhai,Fo shan, Guangdong, China.

Manufacturer : Sae Audio Co.,LTD. Sae reserves the right to make changes in specifications and products without prior notice.



PC: 528241

Tel: 0757-8560-8331

Fax: 0757-8568-8191


Email : support@saechina.com

Brand **website :** www.saeaudio.com

Website: www.saeaudio.com
www.saeaudio.com

SAE

Documents / Resources

	<p>sea LP428s Loudspeaker Processor [pdf] User Manual LP428s Loudspeaker Processor, LP428s, Loudspeaker Processor, Processor</p>
---	--

Manuals+.