



SDHQ SP-9100 Switch-Pros Keypad Mount Instruction Manual

[Home](#) » [SDHQ](#) » SDHQ SP-9100 Switch-Pros Keypad Mount Instruction Manual 



SDHQ Motorsports
192 S McQueen Rd
Ste 109 Gilbert, AZ 85233
www.SDHOQofFrosted.com

Contents

- [1 Product Packing List](#)
- [2 INSTALLATION INSTRUCTIONS](#)
- [3 Documents / Resources](#)
 - [3.1 References](#)

Product Packing List

Product: SDHQ-53-1130-XK70-9100/RCR12

Description: 2022-current Toyota Tundra Switch Pros SP9100/RCR-12 3D Printed Dash Keypad Mount

(1) SDHQ 3D Printed SP9100/RCR12 Dash Mount
SDHQ-53-1130-XK70-9100
OR
SDHQ-53-1130-XK70-RCR12
SDHQ-53-1130-XK70-A
SDHQ-53-1130-XK70-B
SDHQ-53-1130-XK70-HP

(1) SDHQ 3D Printed Backer 1
(1) SDHQ 3D Printed Backer 2
(1) Hardware Package

- (4) #6-32 x 1" SS Threaded Rod
- (1) 1/4"-20 S.S. Nylock Nut (RCR-12 Only)
- (1) RAM Tough Ball 1" 1/4"-20 x 1/2" (RCR-12 Only)

INSTALLATION INSTRUCTIONS

Product: SDHQ-53-1130-XK70

Description: 2022-current Toyota Tundra Switch Pros SP9100/RCR-12 3D Printed Dash Keypad Mount



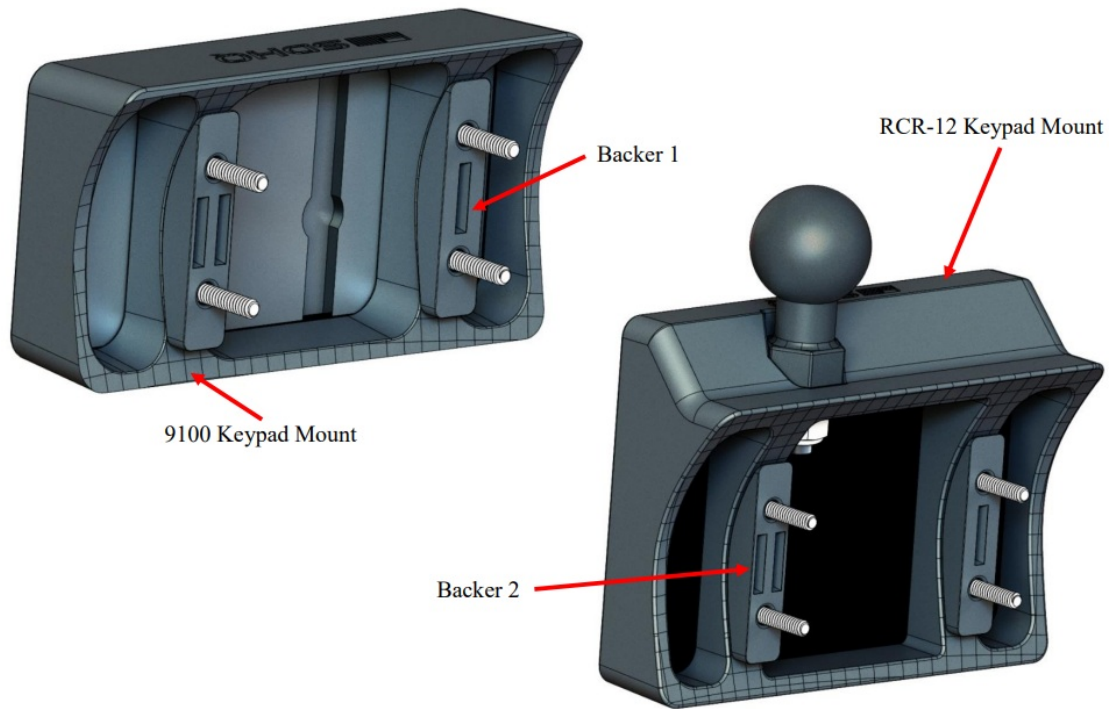
Parts List	Hardware List	Required Tools
(1) SDHQ 3D Printed SP9100/RCR12 Dash Mount SDHQ-53-1130-XK70-9100 OR SDHQ-53-1130-XK70-RCR12 (1) SDHQ 3D Printed Backer SDHQ-53-1130-XK70-A (1) SDHQ 3D Printed Backer 2 SDHQ-53-1130-XK70-B (1) Hardware Package SDHQ-53-1130-XK70-HP	(4) #6-32 x 1 SS Threaded Rod (RCR-12 only) (1) 1/4"-20 S.S. Nylock Nut (1) 1" RAM Tough Ball 1/4"-20 x 1/2"	Plastic Panel Remover Drill 1/8" Drill Bit 5/32" Drill Bit 3/4" Step Drill Bit 7/16" Wrench Razor Blade or Cutters

Tech Notes

Instructions show install of 53-1130-XK70-9100, RCR-12 keypad mount install is identical

Approx. Install Time: 1 Hour (not including wiring)

***READ ALL INSTRUCTIONS THOROUGHLY FROM START TO FINISH BEFORE BEGINNING INSTALLATION!



Installation Instructions:

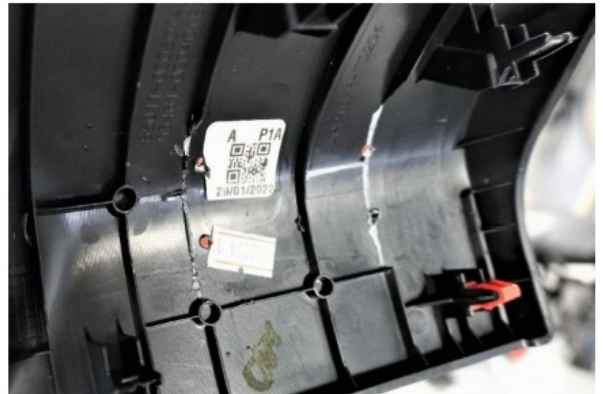
1. Unbox all parts and familiarize yourself with them.
2. Remove the dash trim piece from the driver side by using your trim tool to unclip from the back going forward towards the dash. The trim piece slides out from the dash once unclipped fully.



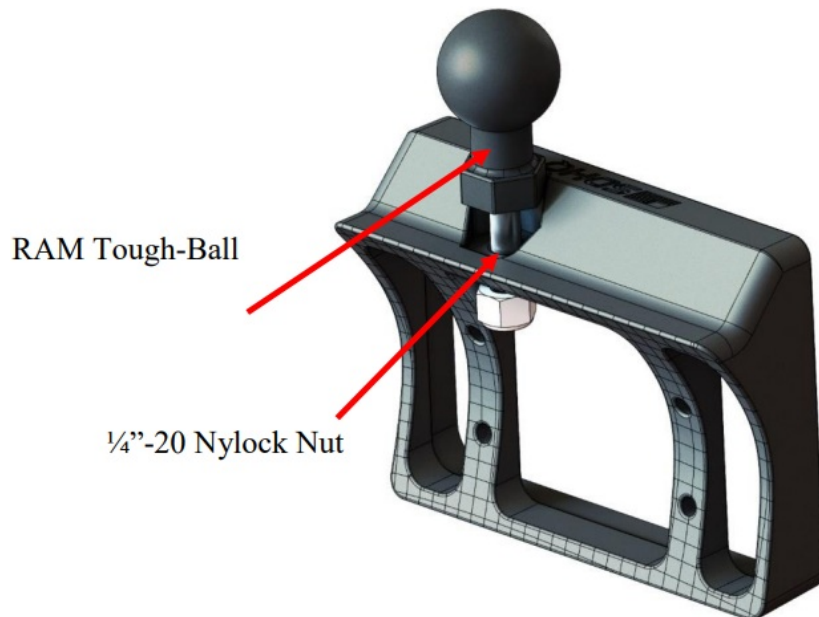
3. Position and secure with tape, your bare keypad mount on the dash trim piece as pictured. Drill a 1/8" pilot hole into the panel using each of your mounts bolt holes as a guide and another pilot hole in the center opening of the bare mount towards the front of the panel. Remove the keypad mount and re-drill the (4) bolt holes with your 5/32" drill bit and use your step drill bit to drill your center hole to 3/4" for the wire harness.



4. Turn the panel over and trim any ribs that would keep the backers from mounting flat against the back side.

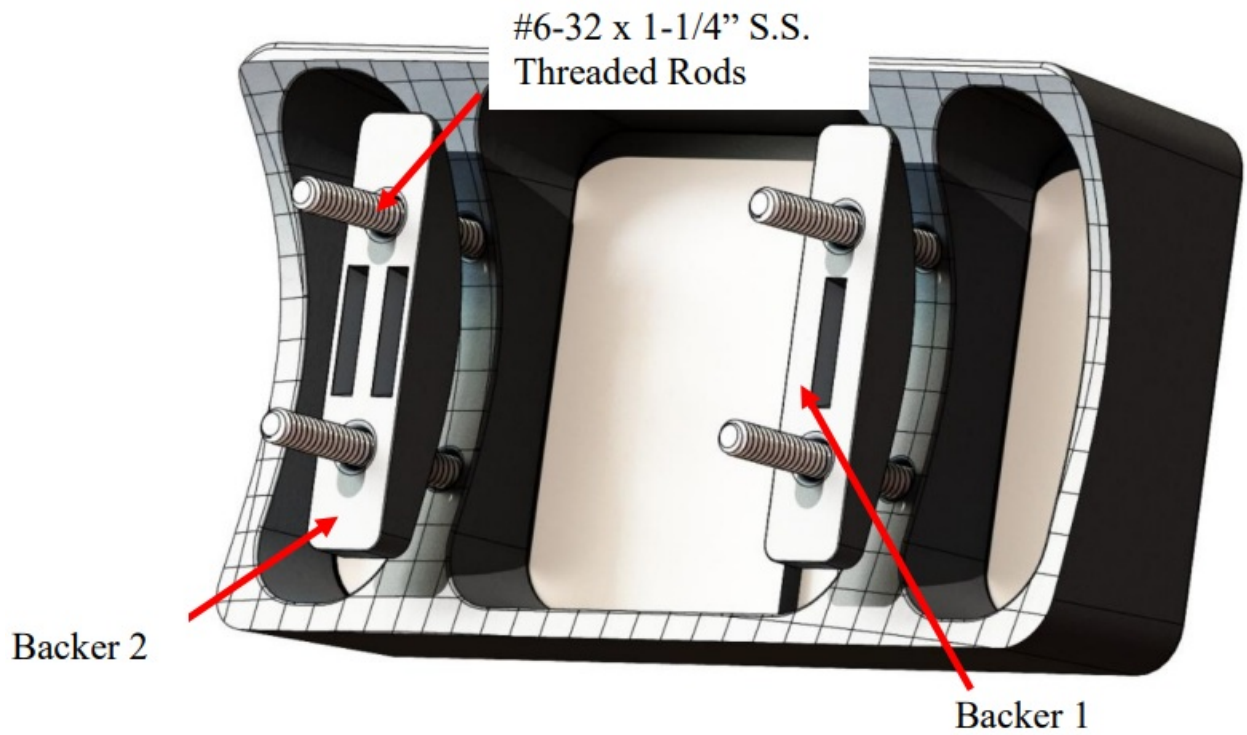


5. Skip this step if you are using the 9100 Keypad mount. Take the RAM Tough-Ball and place it into the keypad mount and tighten down with the 1/4"-20 S.S. nylock nut.



6. Install your Switch Pros keypad into the mount and align over your holes on the drilled panel. Feed the wire harness through the larger hole and thread in the (4) 632 threaded rods through the backers on the back side of the panel as shown on Page 4.

Use the Switch Pro provided nuts to secure. (Note: pay attention to the orientation of the backers, they are slightly different between Backer 1 and Backer 2)



7. Wire and reinstall your panel with attached keypad and enjoy your SDHQ 3D printed Switch Pros Keypad Mount!



Double check all hardware is installed correctly and tight

Re-torque ALL bolts after 100 miles



190 S McQueen Rd
Ste 109 Gilbert, AZ 85233
www.sdhqoffroad.com

Follow us on:



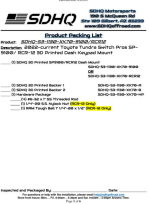
Facebook





Instagram

For questions or help with the installation, please email help@sdhqoffroad.com
Store front hours: Mon. – Fri. 8:00am – 5:30pm and Sat. 9:00am – 2:00pm Arizona Time.

Documents / Resources

	<p>SDHQ SP-9100 Switch-Pros Keypad Mount [pdf] Instruction Manual SP-9100 Switch-Pros Keypad Mount, SP-9100, Switch-Pros Keypad Mount, Keypad Mount, Mo unt</p>
---	---

References

-  [SDHQ - Your Motorsports Headquarters](#)
-  [SDHQ - Your Motorsports Headquarters](#)
- [User Manual](#)

[Manuals+](#), [Privacy Policy](#)

This website is an independent publication and is neither affiliated with nor endorsed by any of the trademark owners. The "Bluetooth®" word mark and logos are registered trademarks owned by Bluetooth SIG, Inc. The "Wi-Fi®" word mark and logos are registered trademarks owned by the Wi-Fi Alliance. Any use of these marks on this website does not imply any affiliation with or endorsement.