

Sculpfun
Sculpfun G9 Max
Chuck SGD Software



Sculpfun G9 Max Chuck SGD Software User Guide

[Home](#) » [SCULPFUN](#) » Sculpfun G9 Max Chuck SGD Software User Guide 

Contents

- [1 Sculpfun G9 Max Chuck SGD Software](#)
- [2 Product Usage Instructions](#)
- [3 Software Settings](#)
- [4 Operating Steps](#)
- [5 Installation](#)
- [6 Documents / Resources](#)
 - [6.1 References](#)
- [7 Related Posts](#)

Sculpfun

Sculpfun G9 Max Chuck SGD Software



Specifications

- Model: G9
- Connection: USB
- Password: sculpfun001

Product Usage Instructions

Software Settings

Open the SGD Software and connect the G9 machine to the computer with a USB cable. After successful connection, follow these steps

1. Select Device information to check basic information, modify accessories, and display settings.
2. Configure accessory information when using the roller or chuck for engraving. Ensure the Safety Door is closed during use.
3. Do not use the slide extension for hot-swap. Connect it when the G9 machine is off.

Operating Steps

Roller Engraving

Step 1: Preparation

1. Create a new canvas and change the mode to Roller engraving in the software.
2. Measure the diameter of the material (not circumference) and input it into the software.

Step 2: Installation

1. Remove the Chuck and install the roller.
2. Place materials on the rotary roller and put the roller accessory on the machine working platform.

Step 3: Connection

1. Connect the rotary roller accessory using a cable to the G9 machine.
2. Turn on the machine after connecting.

Step 4: Engraving

1. **Focus:** Adjust materials on the platform for focus. Align red and blue dots by adjusting with the electric lift button.
2. **Parameters Settings:** Edit patterns or text on canvas and select appropriate parameters for engraving content and materials.
3. **Preview:** Check working range with Preview.
4. **Start Engraving:** Click Mark to begin engraving.

Chuck Engraving

Step 1: Preparation

1. Create a new canvas and switch mode to Claw engraving in the software.
2. Measure material diameter and input into software.

Step 2: Installation

1. Remove roller and install chuck.
2. Secure material in chuck and place roller accessory on the working platform. Use mini level for adjustment.

Step 3: Connection

1. Connect rotary roller with cable to G9 machine.
2. Power on the machine after connection.

Step 4: Engraving

Focus: Align materials on platform for focus using red and blue dots.

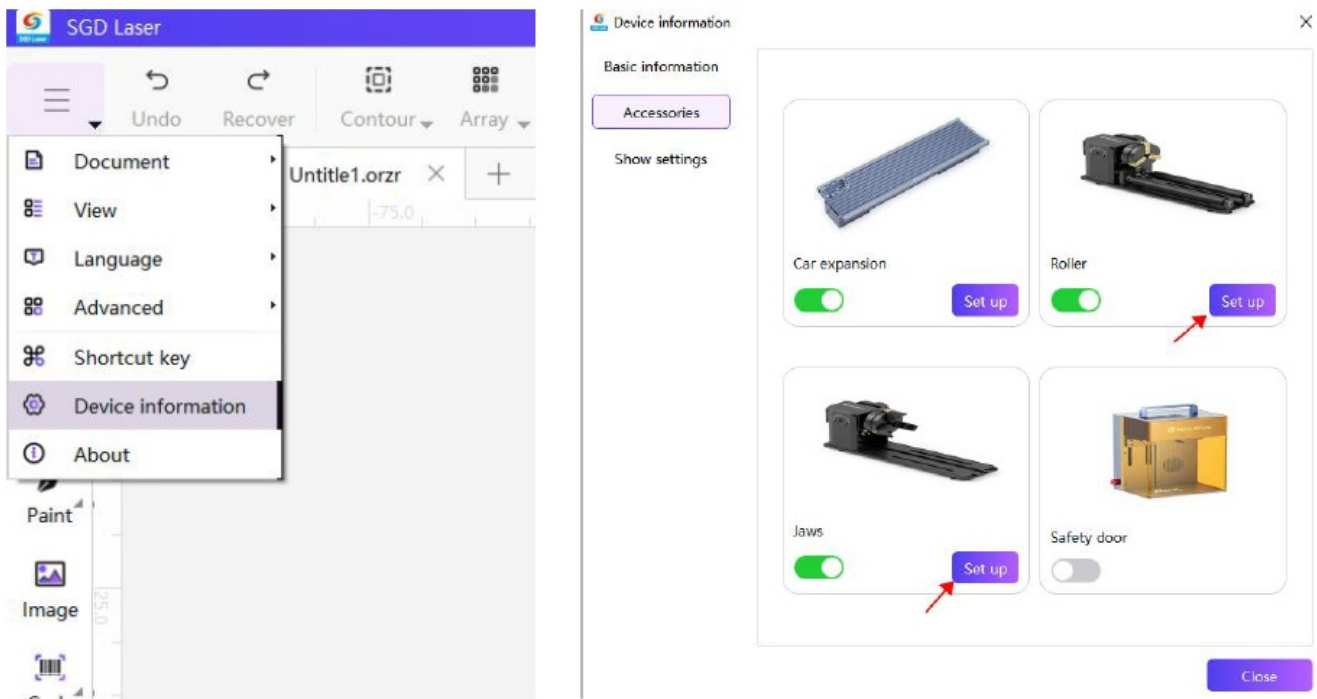
Frequently Asked Questions (FAQ):

- **Q: Can I use the slide extension for hot-swap?**
 - A: No, the slide extension is prohibited for hot-swap use. Connect it only when the G9 machine is off.

Software Settings

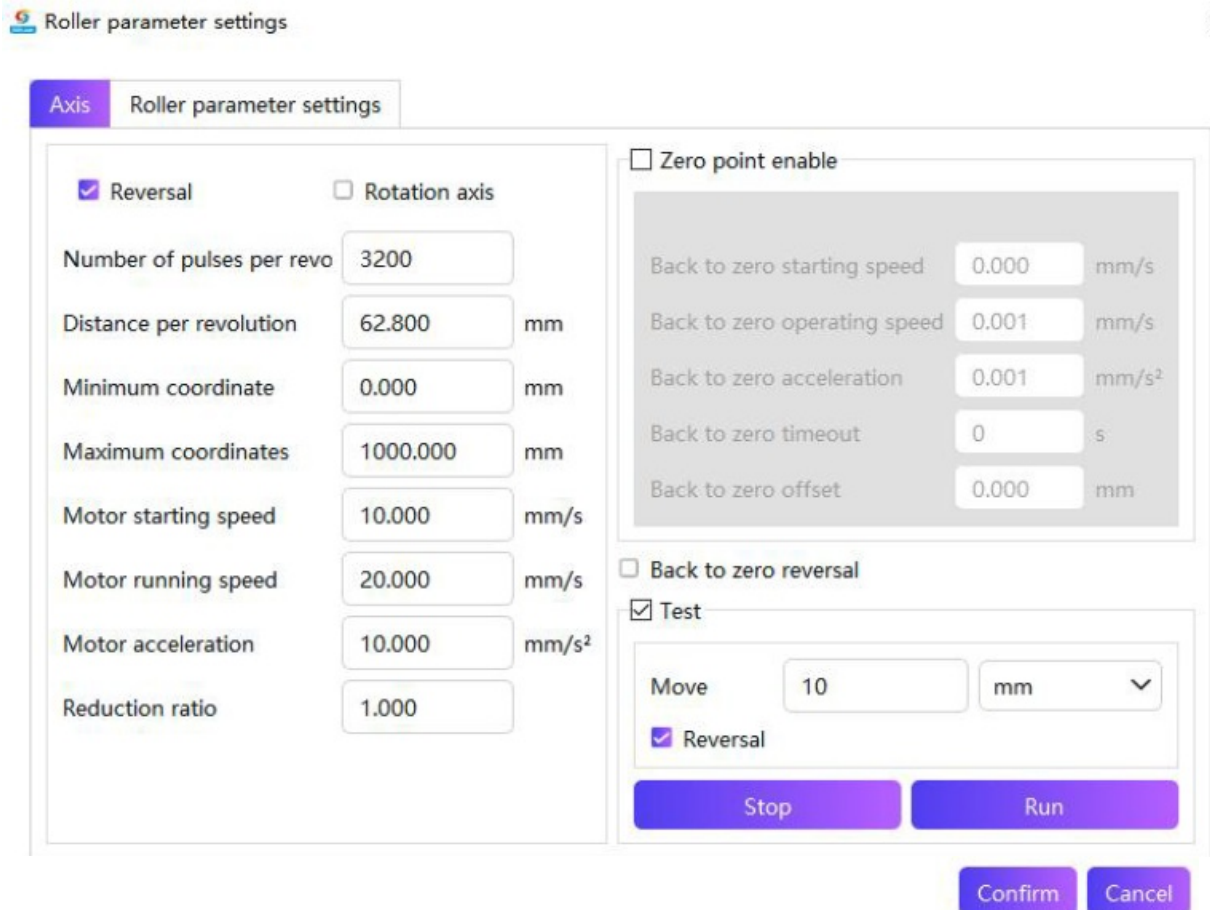
Open the SGD Software and connect the G9 machine to the computer with a USB cable. After successful

connection, you can select “Device information” to check the basic information, modify accessories and display settings. The accessory information needs to be configured when using the roller or chuck to engrave, meanwhile, Safety Door should be in a closed status. PLEASE NOTE that the slide extension is prohibited for hot-swap use and must be connected when the G9 machine is off.



User Password: sculpfun001

The parameters are modified as follows Roller



Axis		Roller parameter settings			
Axis ID	0	Axis placement mode	Swing sideways		
Combined acceleration	900000	(mm/s ²)			
Maximum roller speed	30	(mm/s)	Roller acceleration	100	(mm/s ²)
Maximum speed of galv	5000	(mm/s)	Galvanometer acceleration	900000	(mm/s ²)
Deduplication threshold	0	(mm)			
Sharp corner arc thresh	0	(mm)			
Speed interpolation thre	10	(mm/s)			
<input type="checkbox"/> Enable optical power					
<input type="checkbox"/> Return to zero point					

Confirm

Cancel

Chuck

Axis		Chuck parameter settings			
<input type="checkbox"/> Reversal	<input type="checkbox"/> Rotation axis	<input type="checkbox"/> Zero point enable			
Number of pulses per rev	12800	Back to zero starting speed		0.000	mm/s
Distance per revolution	10.000	mm	Back to zero operating speed	0.001	mm/s
Minimum coordinate	0.000	mm	Back to zero acceleration	0.001	mm/s ²
Maximum coordinates	1000.000	mm	Back to zero timeout	0	s
Motor starting speed	1.000	mm/s	Back to zero offset	0.000	mm
Motor running speed	2.000	mm/s	<input type="checkbox"/> Back to zero reversal		
Motor acceleration	10.000	mm/s ²	<input checked="" type="checkbox"/> Test		
Reduction ratio	1.000		Move	10	mm
		<input checked="" type="checkbox"/> Reversal			
		Stop	Run		

Confirm

Cancel

Axis **Chuck parameter settings**

Axis ID	0	Axis placement mode	Swing sideways		
Combined acceleration	900000	(mm/s ²)			
Maximum roller speed	30	(mm/s)	Roller acceleration	100	(mm/s ²)
Maximum speed of galvan	5000	(mm/s)	Galvanometer acceleration	900000	(mm/s ²)
Deduplication threshold	0	(mm)			
Sharp corner arc threshold	0	(mm)			
Speed interpolation thresh	10	(mm/s)			
<input type="checkbox"/> Enable optical power co					
<input type="checkbox"/> Return to zero point aft					

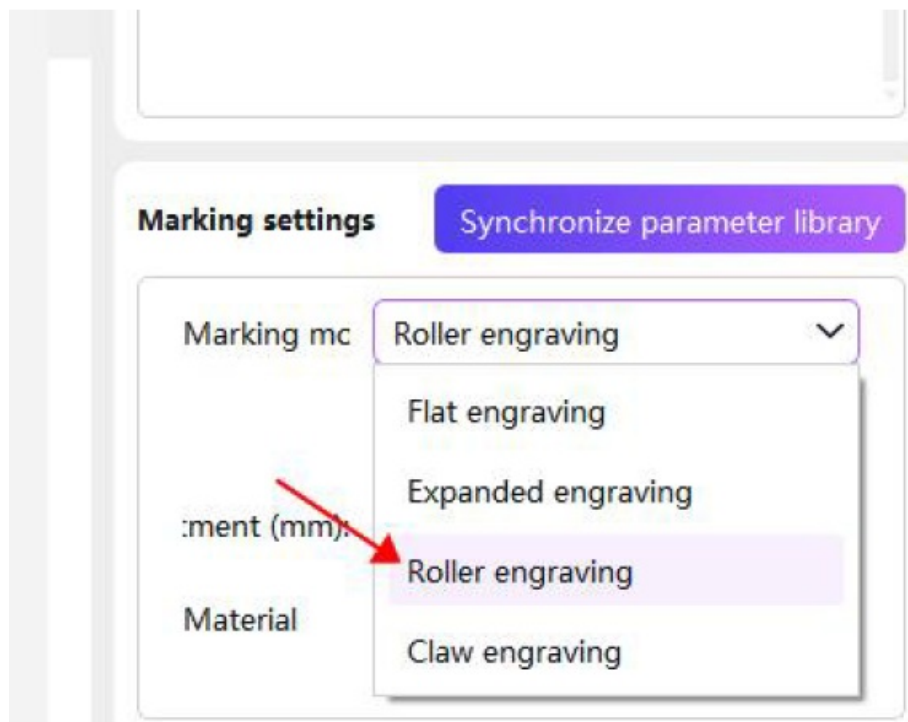
Confirm Cancel

Operating Steps

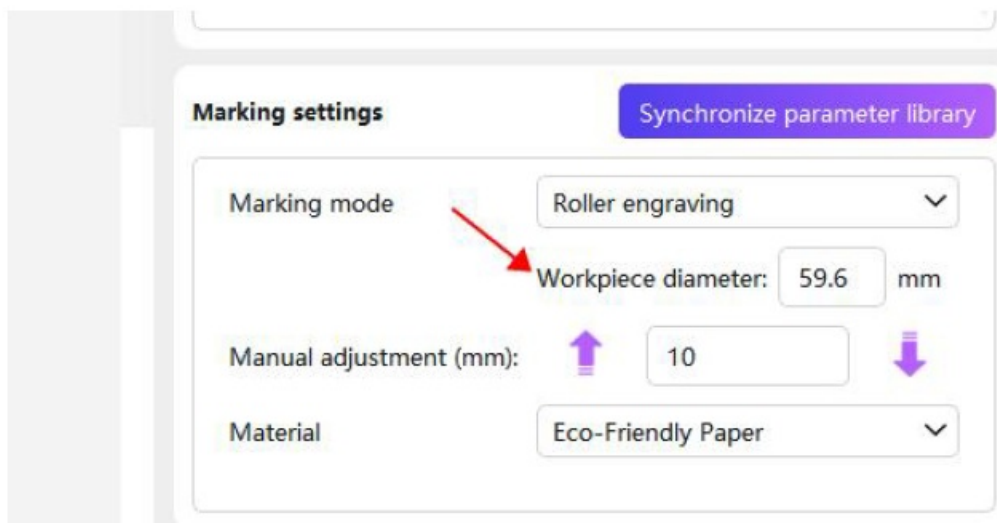
Roller Engraving

Step 1: Preparation

Create a new canvas. You can change the mode to “Roller engraving” in the lower right corner of the SGD software interface.

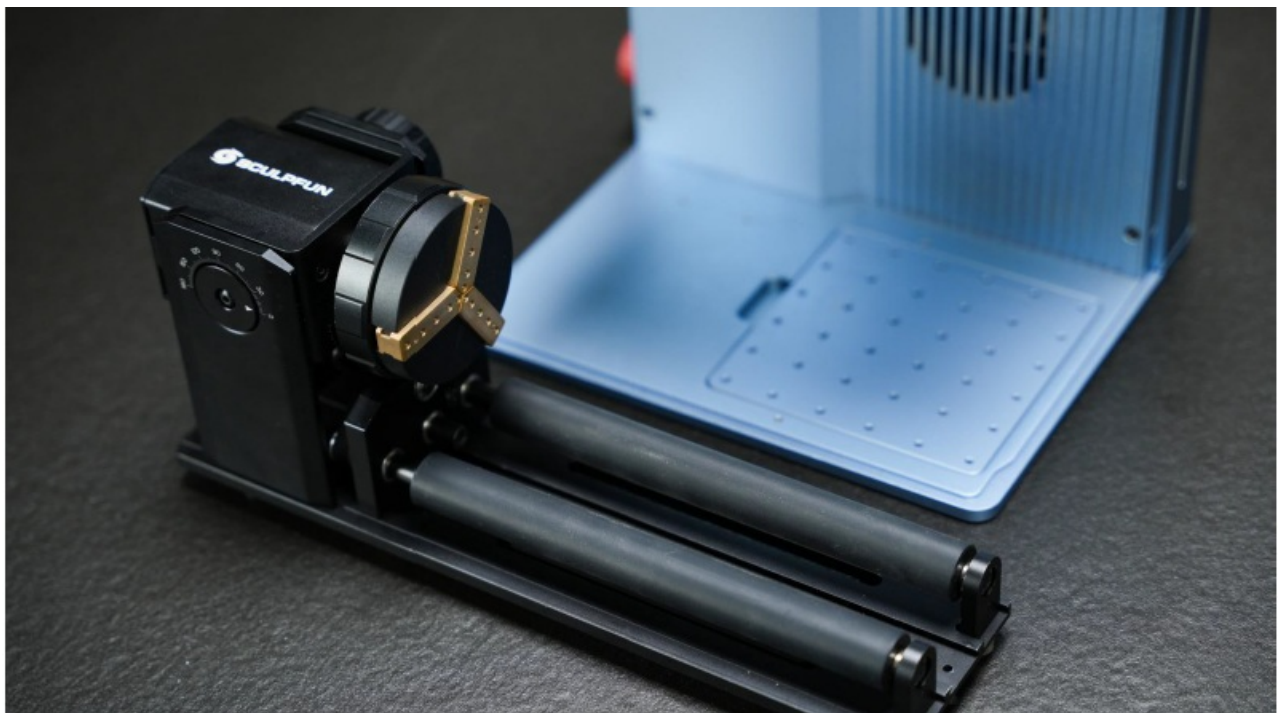


Measure the Diameter of the material in advance (Note That It Is Not The Circumference) and enter it into the software.

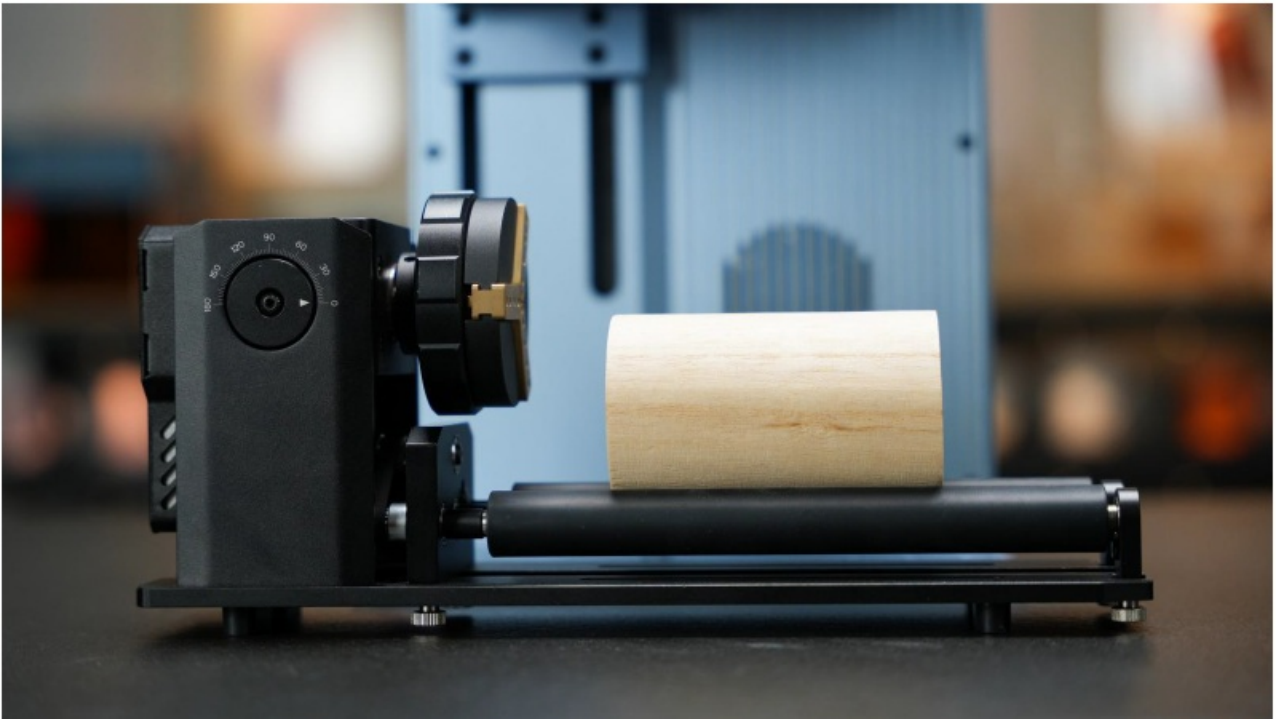


Installation

1. Remove the Chuck and install the roller on it.



2. Place the materials on the rotary roller and put the roller accessory on the machine working platform.



Step 3: Connection

Use one end of the connection cable to connect the rotary roller accessory, and the other end to connect the accessory interface on the back of the G9 using an adapter cable. After that you can turn on the machine for use.



Step 4: Engraving

1. Focus

Place the rotary roller with materials on the machine working platform and click to focus. Red and blue dots will appear on the materials, adjusting them with the electric lift button to make the two dots coincide to complete the focus. **NOTE:** To reach a better engraving effect, the rotation direction of the materials must be level with the y-axis direction of the laser engraver.



2. Parameters Settings

You can edit patterns or text on the canvas and select proper parameters according to the engraving content and materials. In particular, the engraving effect of performing vector graphics lines using rotary roller is not well.

Marking settings [Synchronize parameter library](#)

Marking mode

Roller engraving

Workpiece diameter:

59.8

mm

Manual adjustment (mm):

↑

10

↓

Material

Eco-Friendly Paper

Light source

☒ Blue light ☐ Red light

Marking times

1

Power (%)

100

Speed(mm/s)

30

☐ Select processing ☐ Red light outline

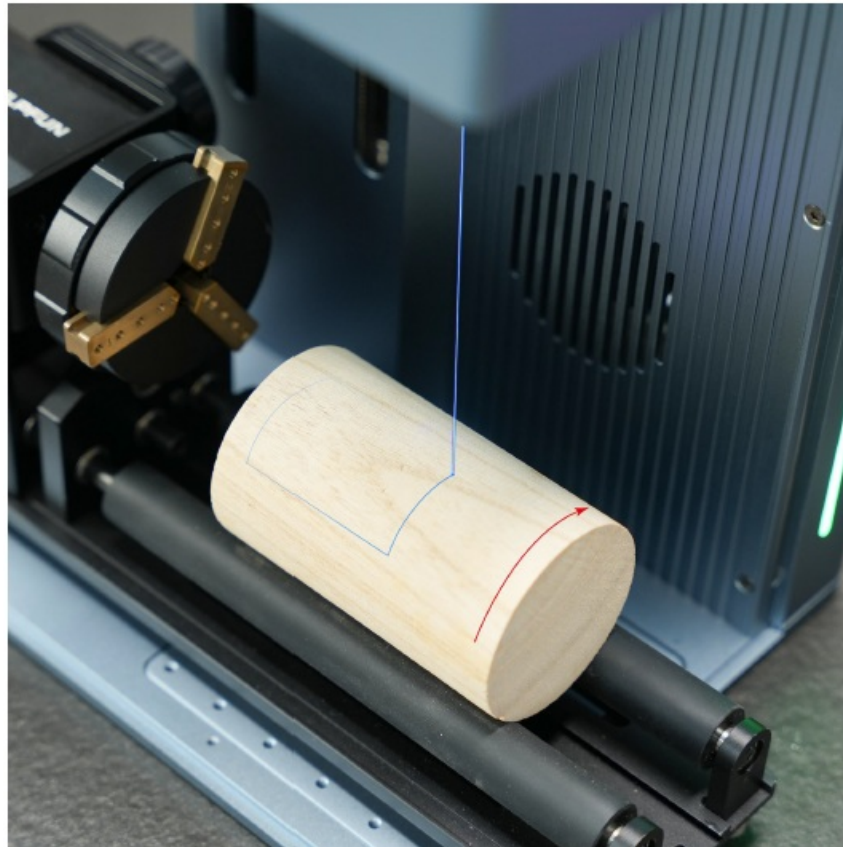
Preview (F1)

Mark(F2)

Focus

3. Preview

Click on “Preview” to check the working range of the machine.



4. Start Engraving

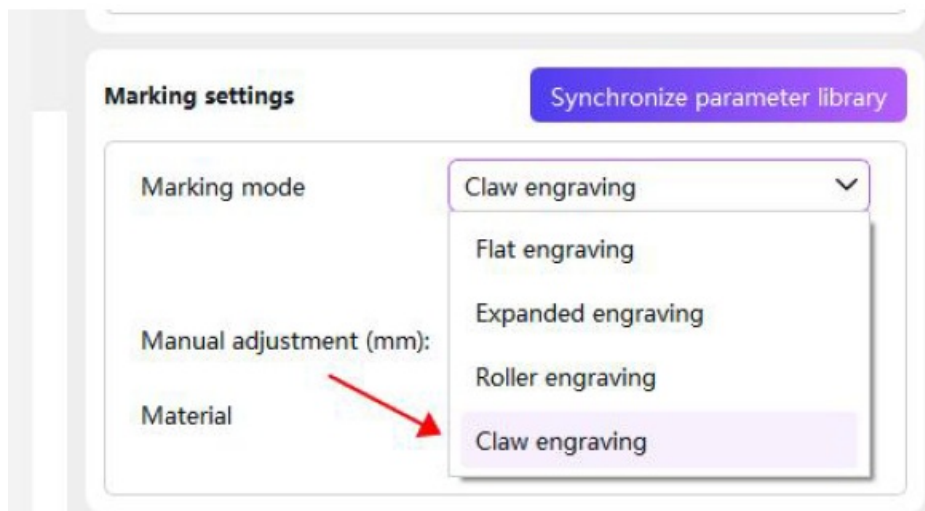
Click on “Mark” to start working.



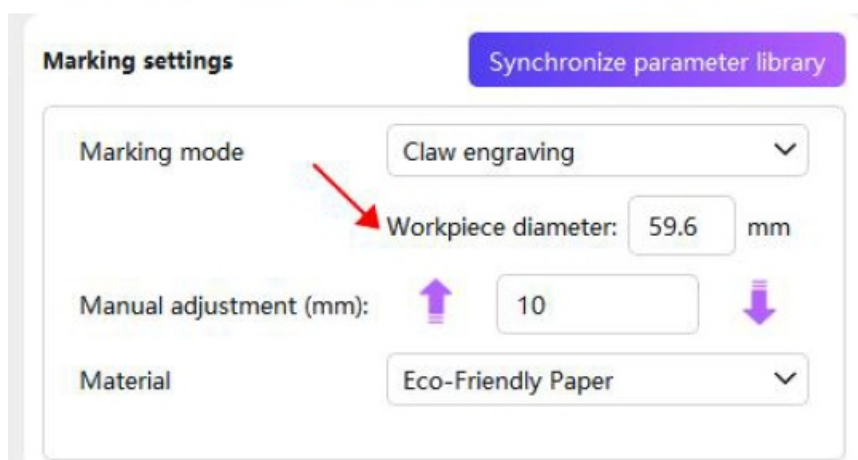
Chuck Engraving

Step 1: Preparation

Create a new canvas. You can change the mode to “Claw engraving” in the lower right corner of the SGD software interface.



Measure the Diameter of the material in advance (Note That It Is Not The Circumference) and enter it into the software.



Step 2: Installation

1. Remove the roller and install the chuck.



2. Secure the material in the chuck, ensuring it won't fall off. Afterward, place the roller accessory on the machine working platform. Use the mini level to adjust the level of the material for accurate printing of the pattern onto the material.



Step 3: Connection

Use one end of the connection cable to connect the rotary roller, and the other end to connect the accessory interface on the back of the G9 using an adapter cable. After that you can turn on the machine for use.



Step 4: Engraving

1. Focus

Place the rotary chuck with materials on the machine working platform and click to focus. Red and blue dots will appear on the materials, adjusting them with the electric lift button to make the two dots coincide to complete the focus. **NOTE:** To reach a better engraving effect, the rotation direction of the materials must be level with the y-axis direction of the laser engraver.



2. Parameters Settings

You can edit patterns or text on the canvas and select proper parameters according to the engraving content and materials.

3. Preview

Click on "Preview" to check the working range of the machine.



4. Start Engraving

Click on “Mark” to start working.



Documents / Resources



[Sculptfun G9 Max Chuck SGD Software](#) [pdf] User Guide
G9 Max Chuck SGD Software, G9, Max Chuck SGD Software, Chuck SGD Software, SGD Software, Software

References

- [User Manual](#)

Manuals+, Privacy Policy

This website is an independent publication and is neither affiliated with nor endorsed by any of the trademark owners. The "Bluetooth®" word mark and logos are registered trademarks owned by Bluetooth SIG, Inc. The "Wi-Fi®" word mark and logos are registered trademarks owned by the Wi-Fi Alliance. Any use of these marks on this website does not imply any affiliation with or endorsement.