

SCS

S8

**Bluetooth
Helmet
Intercom**



SCSETC S8 Bluetooth Helmet Intercom Instruction Manual

[Home](#) » [SCSETC](#) » SCSETC S8 Bluetooth Helmet Intercom Instruction Manual 

Contents

- [1 SCSETC S8 Bluetooth Helmet Intercom](#)
- [2 FAQs](#)
- [3 OVERVIEW](#)
- [4 PRODUCT FUNCTION](#)
- [5 Product characteristics](#)
- [6 Installation steps](#)
- [7 Talk connection](#)
- [8 Music](#)
- [9 FCC](#)
- [10 Documents / Resources](#)
 - [10.1 References](#)
- [11 Related Posts](#)



SCSETC S8 Bluetooth Helmet Intercom



FAQs

- **Q: How do I know if my device is in low-power mode?**
 - **A:** When the battery power is below 3.4V, a low-power alarm will sound every 3 minutes, and the red light will flash.
- **Q: How do I pair my device with another Bluetooth device?**
 - **A:** Ensure your device is in pairing mode by following the instructions provided. Once in pairing mode, you can pair it with another Bluetooth device by initiating pairing on both devices simultaneously.

OVERVIEW



1. Power On/Off key (turn on/off the power supply)
2. Multifunctional key
3. Charging inlet
4. Indicator light

PRODUCT FUNCTION

- S8 is a helmet-based Bluetooth intercom with stable performance. The maximum call distance is 1200m, and the inter-talk distance in the outdoor environment is generally 500m to 1200m.
- In addition, as a high-performance Bluetooth earphone (with a range of 50m), it has functions, such as automatic call answer, waterproofing, and high-resolution voice. It is designed for the riding motorcycles, to ensure the riding safety.

Product characteristics

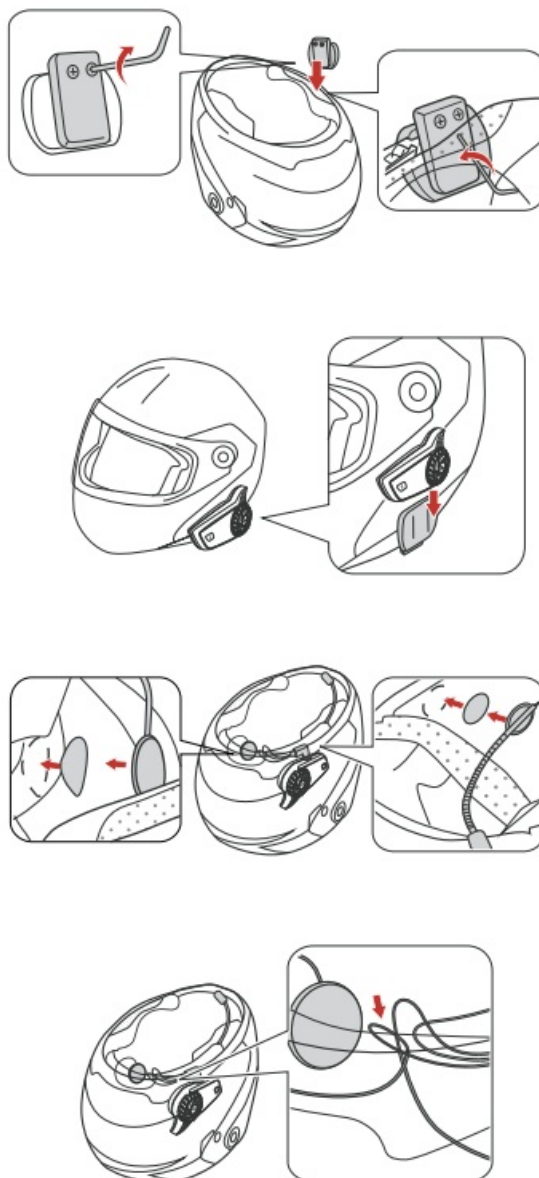
- It supports the inner talk of two persons
- It supports the play of MP3/navigation FM
- DSP noise-reduction technology
- Second-generation full-range high-quality HD horn
- It allows for the simultaneous connection of two Bluetooth devices
- Intimate voice prompt
- Waterproofing and dust proofing
- level up to IP X6
- General-purpose full helmet-type
- High endurance of battery
- Voice dial/Redial of the last number

Remarks

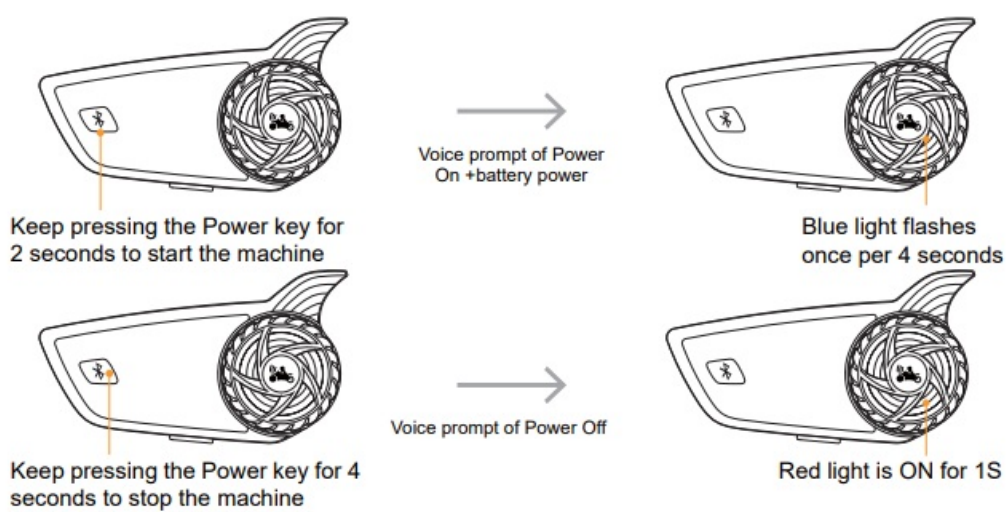
1. Automatic shutdown 25 minutes in case of no connection (except FM mode)
2. Function priority: Call > Talk > GPS&FM& Music

Installation steps

1. Fix it on the helmet
2. Install the intercom on the seat
3. Attach it on the helmet with magic tape, and choose the hard/soft microphone as required
4. Sort the disorderly cables inside, and place them in the foam of the helmet, to wear



Power On/Off



Low-power alarm

- When the battery power is below 3.4V, the low-power alarm voice is sent every 3 minutes and the red light

flashes.

- (with the voice prompt of “insufficient battery power”, and red light flashes two times per 3 minutes)

Pairing

1. In the Off status, keep pressing the Power key for about 5 seconds into the talk pairing status. (No matter for inner or outer devices) (with the voice prompt of “in the pairing”, and red and blue light flashes alternately every 500ms)
2. In the pairing status, keep pressing the multi-functional key for 2 seconds to cancel the pairing status (blue light flashes once per 4 seconds)



Second pairing:

1. In the On status, keep pressing the multi-functional key for 5 seconds into the second pairing status with the voice prompt of “in the pairing”, and red and blue light flashes alternately every 500ms
2. In the pairing status, keep pressing the multi-functional key for 2 seconds, to cancel the pairing status Blue light flashes once per 4 seconds



Clear the pairing record:

- **Clear the pairing record:** in the On status, keep pressing the Power key for 3 seconds to shut down the machine, and then keep pressing it for about 3 seconds. (with the voice prompt of long “beep”, and red light flashes for three times per 300ms)

Scanning

- In the pairing status, press the Power key into the active scanning status (with the voice prompt of “in searching”, and the blue light quickly flashes every 300ms)

Talk connection

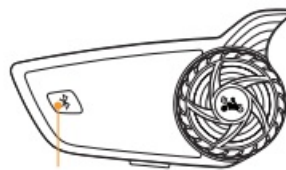


- **Start the talk:** after the successful pairing; for the connected device, press the Power key on any device once for successful reconnection. (with the voice prompt of “the bottom circuit beeps +the talk has been connected”, and the blue light is ON for 1S and then OFF for 1S)
- **Stop the talk:** in the talk status, press the Power key on any device. (with the voice prompt of long “beep”, and blue light flashes for two times per 4 seconds)

Mobile phone connection (GPS/MP3)



Talk reconnection



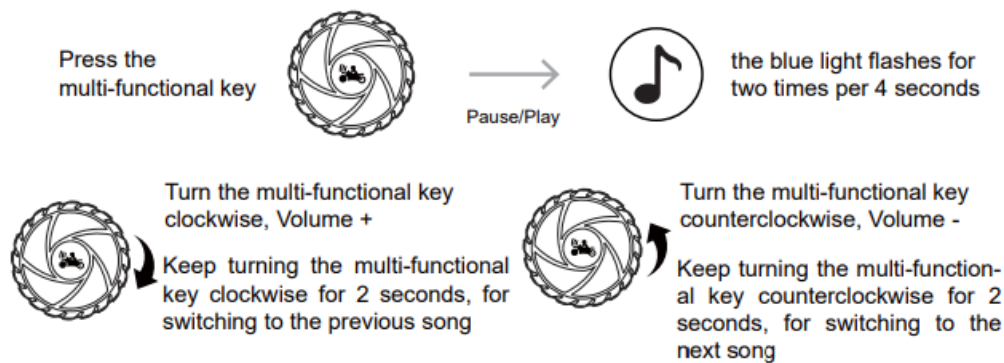
Press the Power key
once

1. In the talk status, the signal, if interrupted, will be subject to automatic reconnection (with the voice prompt of “the underlying link beeps +the talk has been connected”, and blue light flashes for two times per 4 seconds)
2. In the On status, press the Power key once. If the reconnection with the talk is unsuccessful, give a long “beep” voice after 10S. (Blue light quickly flashes every 300ms)
3. At the interruption of signal, the talk will be subject to automatic reconnection. In case of unsuccessful reconnection, press the Power key once after 45S, for reconnection. (with the voice prompt of long “beep”, and blue light quickly flashes every 300ms)

Mobile phone reconnection

- In the On status, it is forced to reconnect the mobile phone being connected in the previous time; in the pairing status, disconnect the currently connected mobile phone.
- Only after the new pairing of the mobile phone, the connected mobile phone can be reconnected.
- In the On status, if the reconnection with the mobile phone is unsuccessful, press the multi-functional key once (with the voice prompt of “mobile phone has been connected”, and blue light flashes for two times per 4 seconds).

Music



Incoming call

- For an incoming call, launch the automatic answer (after 8 seconds)/press the multi-functional key to answer the call



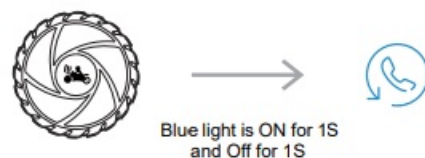
- During the call, press the multi-functional key to hang up



- During the call, keep pressing the multi-functional key for 2 seconds to refuse to answer the incoming call



- While connecting the mobile phone, double-click the multi-functional key to redial the last code



- When the mobile phone is connected, keep pressing the multi-functional key for 1.5 seconds into the Voice assistant



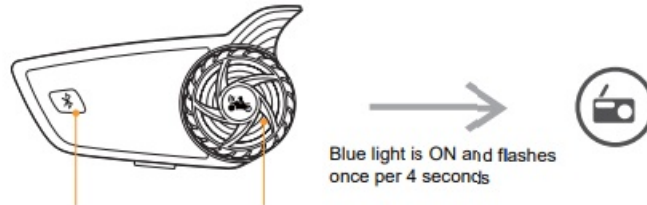
- During the call, turn the multi-functional key clockwise, Volume +



- During the call, turn the multi-functional key counterclockwise, Volume -



Radio



- Turn the multi-functional key clockwise, Volume + Keep turning the multi-functional key clockwise for 2 seconds, with an automatic upward selection of the radio station



- Turn the multi-functional key counterclockwise, Volume – Keep turning the multi-functional key counterclockwise for 2 seconds, with an automatic downward selection of the radio station



Language switching

- In the pairing status, double-click the multi-functional key, to switch the voice prompt in Chinese and English modes. (Blue light quickly flashes two times in 300ms)

Battery power

- When battery power is above 3.76V, the voice prompt displays “sufficient battery power”
- When battery power is below 3.76~3.4V, the voice prompt displays “medium battery power”
- When battery power is below 3.4V, the voice prompt displays “insufficient battery power” (red light flashes two times every 3 minutes)

Charging

- During the charging, the red light is ON, and when it is fully charged, the red light is OFF

Product specification

- **Bluetooth version:** V5.1

- **Mode protocol:** HF/HS, A2DP, AVRCP
- **Battery type:** Lithium battery
- **Battery capacity:** 1000mah
- **Temperature range:** -10~60°C
- **Charging time:** about 3 hours (TYPE-C)
- **Charging voltage:** 5V
- **Charging current:** 500mah
- **Power supply voltage:** VDD3.7V
- **Standby time:** 500 hours
- **Working time:** 12 hours
- **Frequency range:** 2.402GHZ-2.480GHZ
- **Wireless transmission range of intercom:** 1200Mu

FCC

NOTE: This equipment has been tested and found to comply with the limits for a Class B digital device, under part 15 of the FCC Rules. These limits are designed to provide reasonable protection against harmful interference in a residential installation. This equipment generates, uses and can radiate radio frequency energy and, if not installed and used per the instructions, may cause harmful interference to radio communications. However, there is no guarantee that interference will not occur in a particular installation. If this equipment does cause harmful interference to radio or television reception, which can be determined by turning the equipment off and on, the user is encouraged to try to correct the interference by one or more of the following measures:


- Reorient or relocate the receiving antenna.
- Increase the separation between the equipment and the receiver.
- Connect the equipment to an outlet on a circuit different from that to which the receiver is connected.
- Consult the dealer or an experienced radio/TV technician for help.

Changes or modifications not expressly approved by the party responsible for compliance could void the user's authority to operate the equipment. This device complies with Part 15 of the FCC Rules.

Operation is subject to the following two conditions:

1. this device may not cause harmful interference, and
2. this device must accept any interference received, including interference that may cause undesired operation.

Documents / Resources

	<p>SCSETC S8 Bluetooth Helmet Intercom [pdf] Instruction Manual S8, S8 Bluetooth Helmet Intercom, Bluetooth Helmet Intercom, Helmet Intercom, Intercom</p>
---	--

References

- [User Manual](#)

Manuals+. Privacy Policy

This website is an independent publication and is neither affiliated with nor endorsed by any of the trademark owners. The "Bluetooth®" word mark and logos are registered trademarks owned by Bluetooth SIG, Inc. The "Wi-Fi®" word mark and logos are registered trademarks owned by the Wi-Fi Alliance. Any use of these marks on this website does not imply any affiliation with or endorsement.