



SCS Sentinel PSWM Supply Transformer 12v Ways Instruction Manual

[Home](#) » [SCS sentinel](#) » SCS Sentinel PSWM Supply Transformer 12v Ways Instruction Manual 

Contents

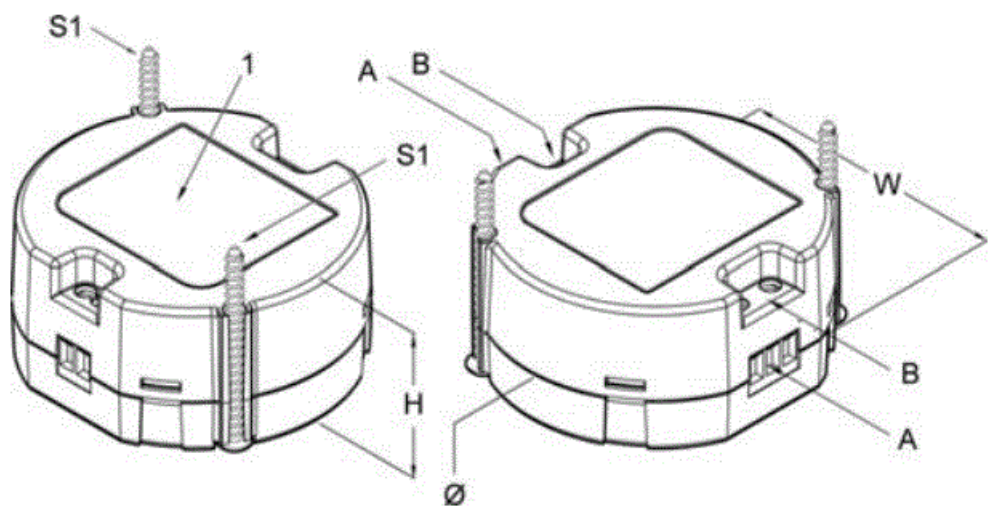
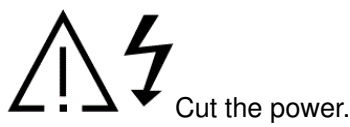
- [1 SCS Sentinel PSWM Supply Transformer 12v Ways](#)
- [2 INSTALLATION](#)
- [3 PRECAUTIONS](#)
- [4 INTERDICTIONS](#)
- [5 WARRANTY](#)
- [6 ASSISTANCE TECHNIQUE](#)
- [7 Documents / Resources](#)
- [8 Related Posts](#)



SCS Sentinel PSWM Supply Transformer 12v Ways



INSTALLATION



Ø diameter (mm)	54,5
W (mm)	51
H (mm)	26,5
A Terminal block	
B Screws	
S1 Supplied type of screws	2,9 mm ou/or/o M3
Tightening torque of the clamps screws (Nm)	0,25

The power supply must be supplied with an AC mains of 230V +/-10% 50/60Hz. It supplies an output voltage of 12V DC (continuous voltage). The maximum current supplied is of 1A during about 1 minute or 0,8A permanently. Should the consumption of 1A be longer than 1 minute, the power supply would progressively get in protection and stop functioning. It would start functioning again after a few minutes. The power supply must be installed vertically on the DIN-rail to let the clamping spring show downwards.

DANGER OF ELECTROCUTION – Read carefully the following directions

Before the installing by the user of the power supply ref. PSWM, bellow called« product or power supply », the consultation of these instructions is compulsory. The electric power supply, object of this manual, hereinafter also called product, can only be installed by qualified and authorized personnel who knows and respect the technical standards as well as all the general current standards and rules related to this product typology. The power supply of this manual is for use with single-phase mains voltage. Its perfect and safe operation requires proper transportation and storage such as assembly and installation performed in a workmanlike manner

Warning

This product is not adapted for an external use. It must be mounted inside an electrical and fire enclosure in self-extinguishing material. It must not be used in different environmental conditions and work ranges than the ones indicated on the label.

INFO

Before making the installation, make sure that the power was turned off and that the input clamp or the input cables and the output clamp or the output cables, that are identifiable on the product label (1), are correctly positioned. For the connection of the power supplies to the AC mains, use cables and derivations with a section that does not exceed a current density of 4A/mm² and add the right terminals. Connect to the AC mains supply each input pole by a readily accessible all-pole mains switch to provide a full disconnection under the Overvoltage Category II. We recommend to protect the electrical installation through a surge absorber or a similar device. To maintain the class II product characteristic, respect the minimum distance (8 mm) between the primary and the secondary terminations and between the primary terminations and any accessible metallic part. Make sure that all the terminal screws (B) are tightly fastened in the clamps (A), being careful not to exceed the tightening torque indicated in the table.

PRECAUTIONS



These equipments are not suitable for use in locations where children are likely to be present. Risk of electric shocks or flames. (The negligence can cause death, serious injuries or damage the ownership). Do not connect the power supply with a not specified input source. Do not damage or crush the input wiring. Do not install or connect the power supply, while it is on. Do not connect the output clamps to the AC mains. Do not damage or crush the input wiring. Do not short-circuit the input and output wiring. Do not alter, open or perforate the power supply. Keep the power supply and the AC wires away from moisture or dust.

INTERDICTIONS

Do never install the power supply in one of the following places, malfunctions, electric shocks or fire can occur, where not authorized and not qualified personnel has access. Places that are exposed to very low temperatures, under direct sunlight, near devices that change temperature, in front of air conditioners, inside a refrigerated area, etc ... Places that are exposed to humidity or extreme condensation, like bath rooms, cellars, greenhouses, etc... places that are exposed to specific environmental conditions, like dust, oil, chemicals, salt, etc., places exposed to continuous vibrations or impacts. Places exposed to warm steam or smoke (near heating equipments or cooking surfaces). Outdoors or in the rain. Do not use at an altitude exceeding 2000m



Don't throw out-of-order products with household waste (garbage). The dangerous substances that they are likely to include may harm health or the environment. Make your retailer take back these products or use the selective collect of garbage proposed by your city.



Direct current I



Alternating current



Class II material

WARRANTY



The invoice and barcode will be required as proof of purchase date during the warranty period.

ASSISTANCE TECHNIQUE



Hotline

0 892 350 490

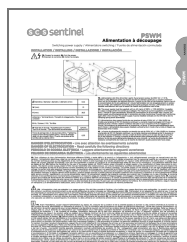
Service 0,15 € / min
+ prix appel

011-2339876

scs-sentinel.com

asistencia.tecnica@scs-sentinel.com

Documents / Resources



[SCS Sentinel PSWM Supply Transformer 12v Ways](#) [pdf] Instruction Manual
PSWM Supply Transformer 12v Ways, PSWM, Supply Transformer 12v Ways, Transformer 12v Ways

[Manuals+](#).