



SCS sentinel MCO0108 Flash Gate LED Installation Guide

[Home](#) » [SCS sentinel](#) » SCS sentinel MCO0108 Flash Gate LED Installation Guide 

Contents

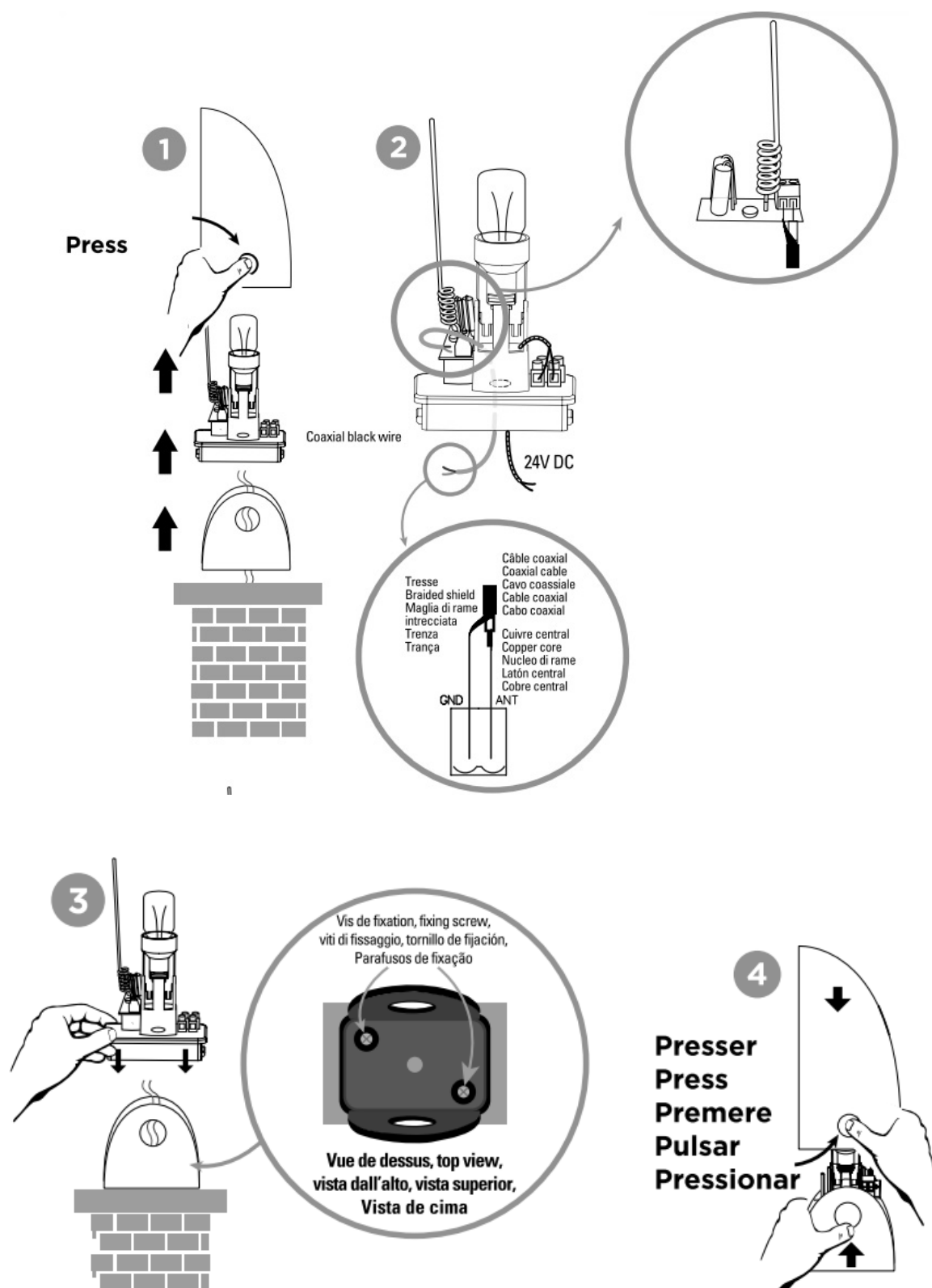
- [1 SCS sentinel MCO0108 Flash Gate LED](#)
- [2 INSTALLING](#)
- [3 Documents / Resources](#)
 - [3.1 References](#)
- [4 Related Posts](#)



SCS sentinel MCO0108 Flash Gate LED

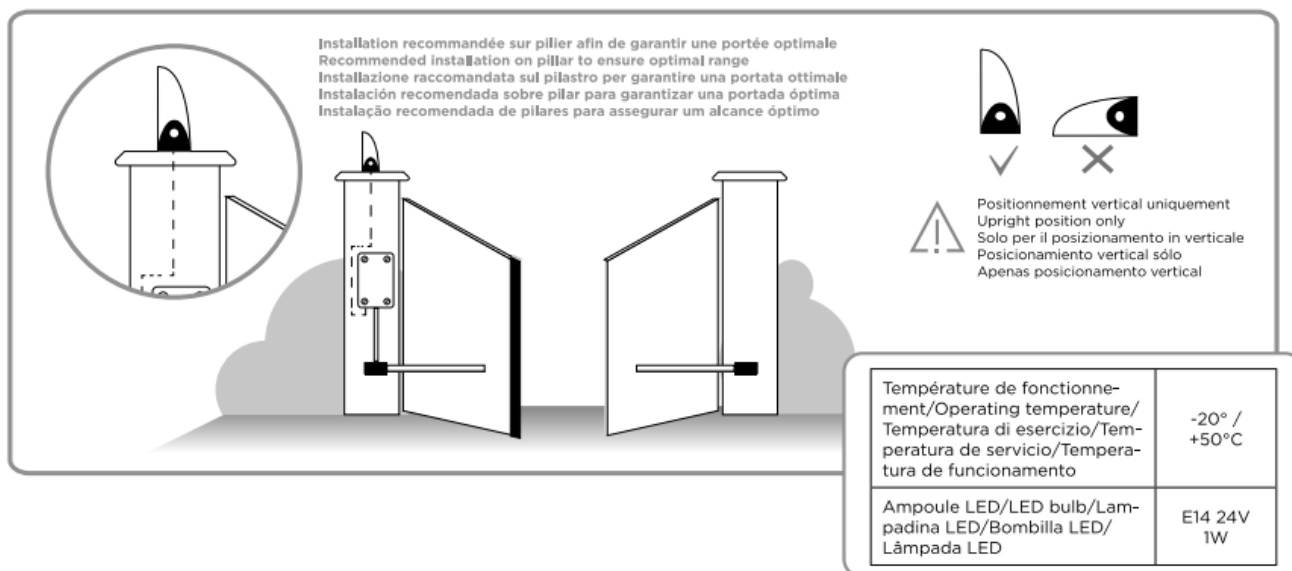


INSTALLING



If you want to improve the operating range of your remote, you can connect the blinker antenna with a RG58 coaxial cable (not supplied). In this case you must disconnect the original antenna and then connect the coaxial copper core to the terminal ANT and the coaxial braided shield to the terminal GND on both antenna and electronic card.

Recommended installation on pillar to ensure optimal range



*2 years warranty, in accordance with French regulation. It is imperative to keep a proof of purchase during the whole warranty period.

WARNINGS

All electrical connections must be made without power and without batteries connected. Do not wash the product with a water jet. Check that the temperature range marked on the product is suitable for its location. Don't throw out of order products with the household waste (garbage). The dangerous substances that they are likely to include may harm health or the environment. Make your retailer take back these products or use the selective collect of garbage proposed by your city.

The UE declaration of conformity may be consulted on the website: www.scs-sentinel.com/downloads.

Documents / Resources

	<p>SCS sentinel MCO0108 Flash Gate LED [pdf] Installation Guide MCO0108 Flash Gate LED, MCO0108, Flash Gate LED, Gate LED, LED</p>
--	---

References

- [User Manual](#)