



# SCS Sentinel CSF0093 Plug-In Battery less Wireless Chime Installation Guide

[Home](#) » [SCS sentinel](#) » SCS Sentinel CSF0093 Plug-In Battery less Wireless Chime Installation Guide 

## Contents

- [1 SCS Sentinel CSF0093 Plug-In Battery less Wireless Chime](#)
- [2 INSTALLATION](#)
- [3 SETTINGS](#)
- [4 Reset](#)
- [5 WARRANTY](#)
- [6 Documents / Resources](#)
- [7 Related Posts](#)



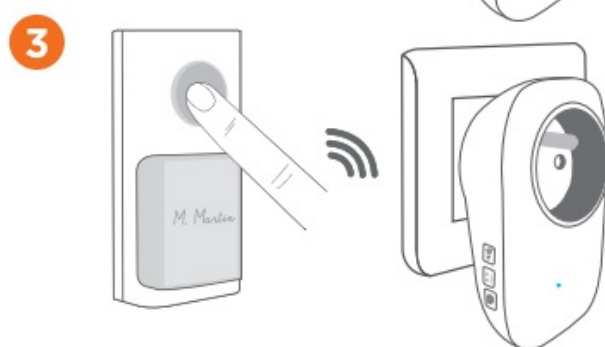
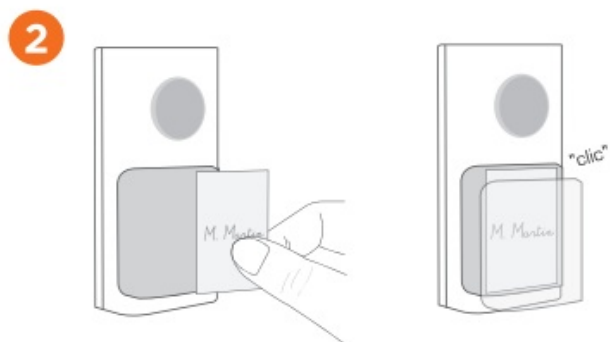
## SCS Sentinel CSF0093 Plug-In Battery less Wireless Chime



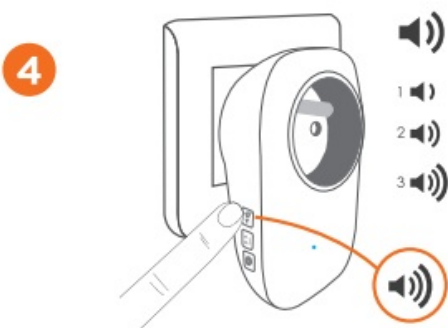
Already programmed and ready to use

## INSTALLATION

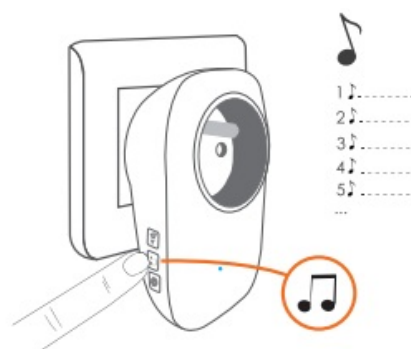
### 1 Push button



## SETTINGS

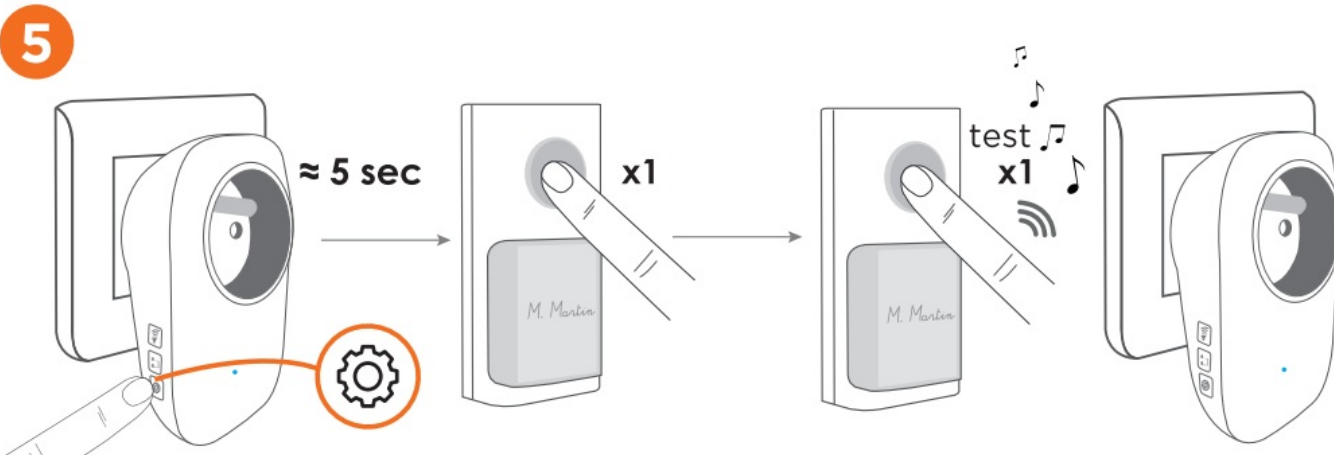


EN. Volume adjustment



EN. Set the ring melody

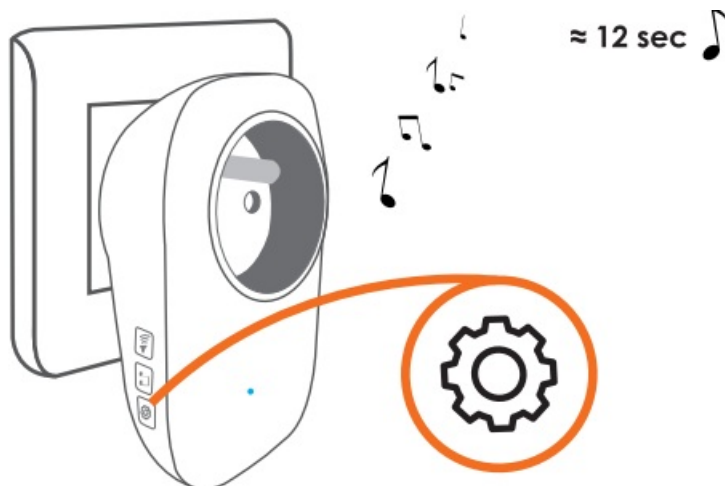
## REPROGRAMMING (IF NECESSARY)



- Press and maintain the button

- Press xl
- Press x1 to test

## Reset



- Press & maintain the button approx. 12 seconds on the chime until the melody rings (all the push buttons are deleted)

## WARRANTY



2years

The invoice and barcode will be required as proof of purchase date during the warranty period.

## ASSISTANCE TECHNIQUE



**0 892 350 490**

Service 0,15 € / min  
+ prix appel

[asistencia.tecnica@scs-sentinel.com](mailto:asistencia.tecnica@scs-sentinel.com)

This manual is an integral part of your product. Keep it in a safe place for future reference. Use the equipment only for its intended purpose. The appliance should not be exposed to dripping or splashing water. No objects filled with liquids, such as vases, should be placed near the appliance. Do not clean the appliance with abrasive or corrosive substances. Only use a soft cloth. Do not let children play with the product or with the packagings.



Don't throw out of order products with the household waste (garbage). The dangerous substances that they are likely to include may harm health or the environment. Make your retailer take back these products or use the selective collect of garbage proposed by your city.



- Alternating current
- Model class II
- The chime is for indoor use only
- The outdoor unit is protected against harmful dust deposits and water jets from any direction/



## Documents / Resources

	<p><a href="#">SCS Sentinel CSF0093 Plug-In Battery less Wireless Chime</a> [pdf] Installation Guide CSF0093 Plug-In Battery less Wireless Chime, CSF0093, Plug-In Battery less Wireless Chime, less Wireless Chime, Wireless Chime</p>
---	---

[Manuals±](#)