



SCS sentinel CAC0003 PushBell 230V Wired Push Button Instructions

[Home](#) » [SCS sentinel](#) » SCS sentinel CAC0003 PushBell 230V Wired Push Button Instructions 

SCS sentinel CAC0003 PushBell 230V Wired Push Button

Contents

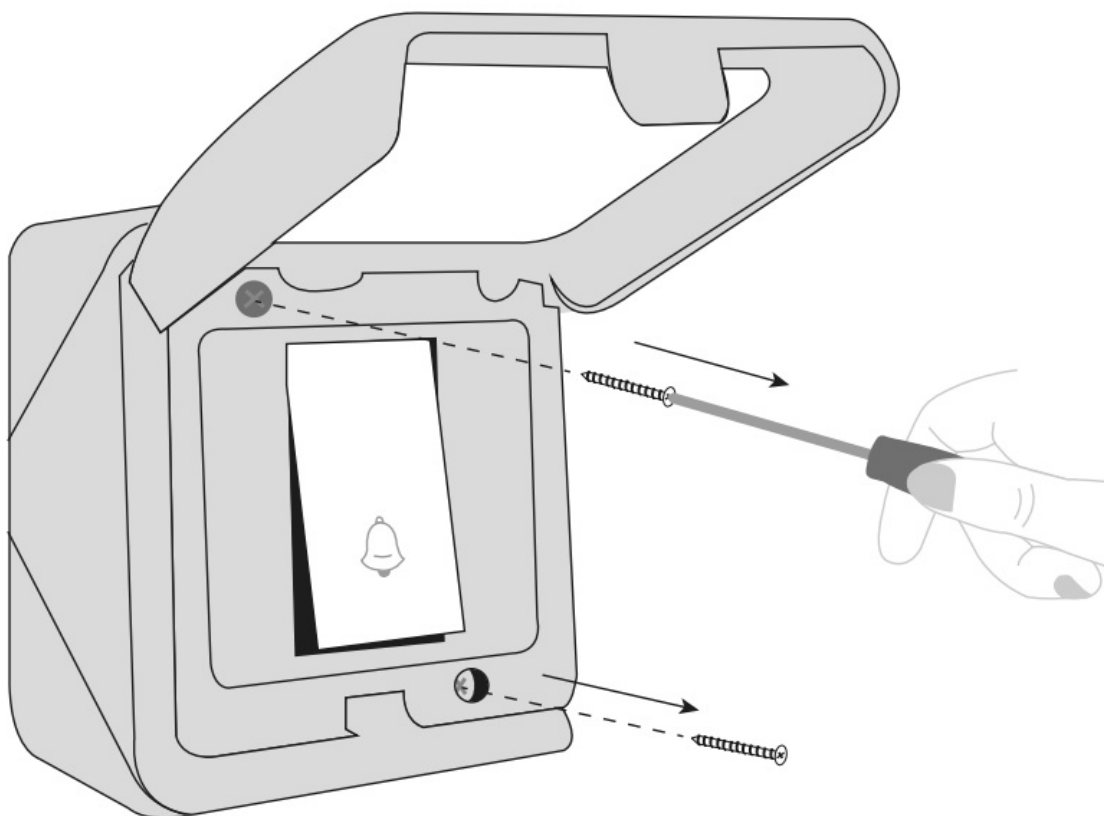
- [1 Wired push button](#)
 - [1.1 WIRING](#)
- [2 Documents / Resources](#)
- [3 Related Posts](#)



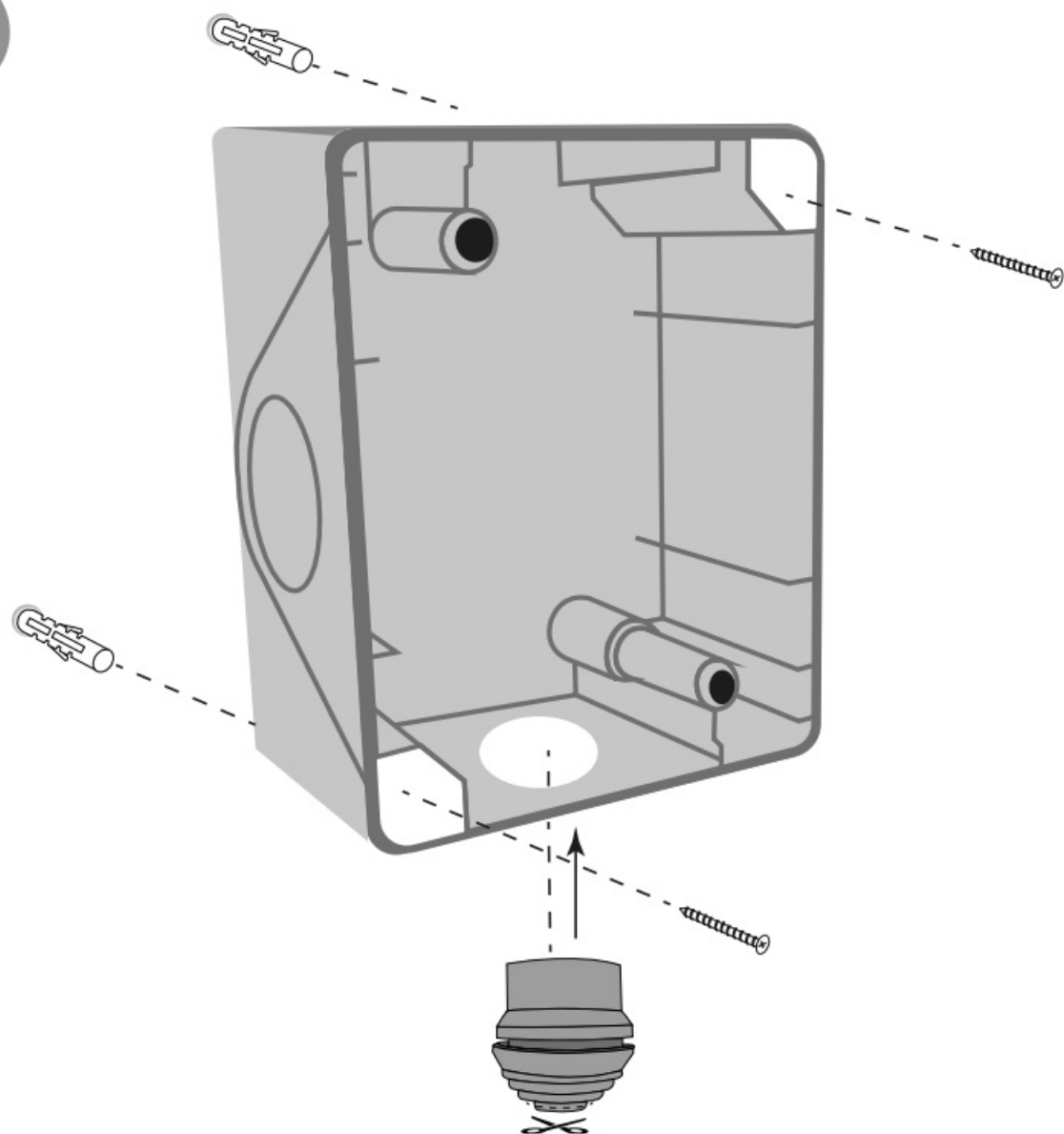
Wired push button

WIRING

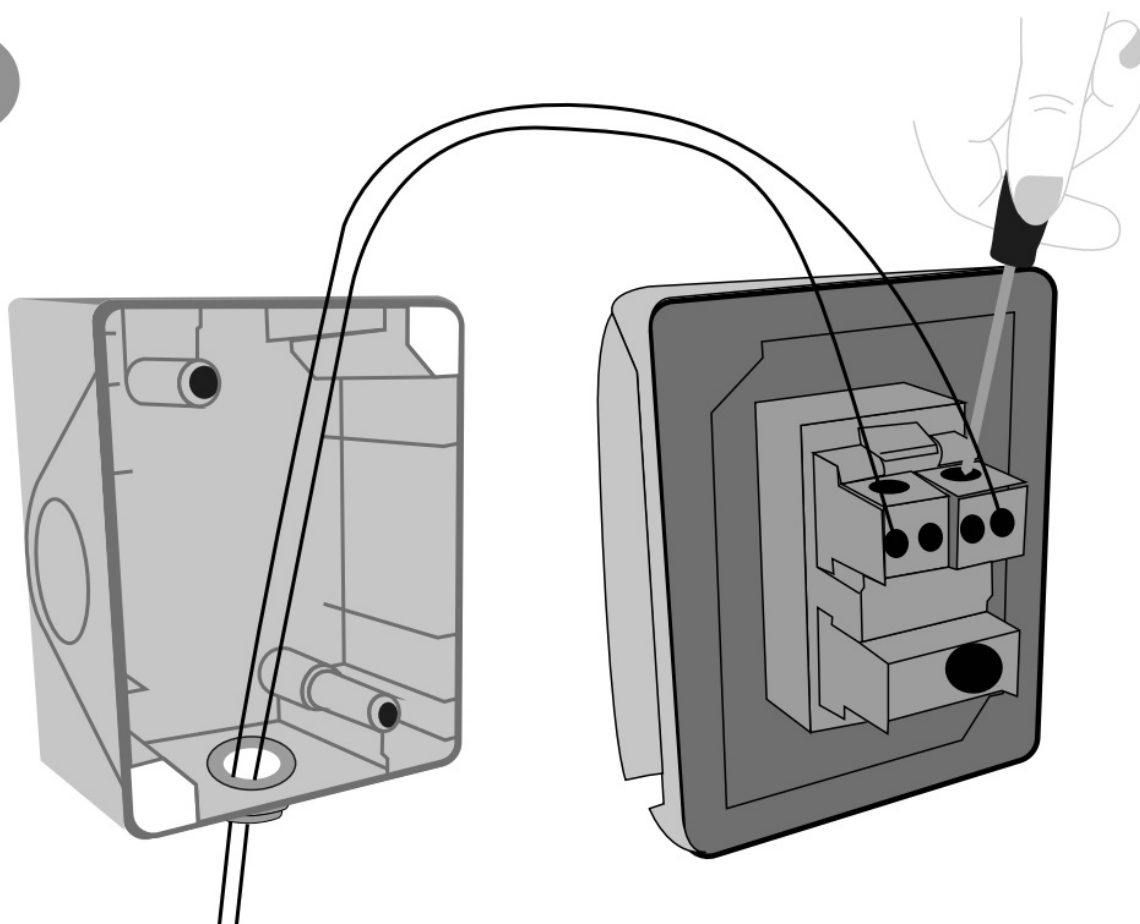
1



2

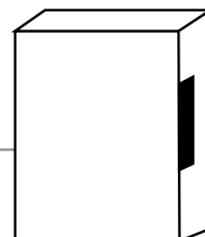
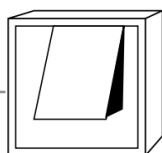


3



1/ Let's be sure it is disconnected from the mains. 2/ Connect the two wires for mains 230V on a surge protector plug with fuse or circuit breaker (installation compliant with standards in force: NFC 15 100 in France). 3/ The section of wires connected to 230 V must not be lower than 1,5 mm².

230V



Compatible with all the wired chimes. Recommended with SCS Sentinel CFIOOO5 MecaBell 3238 230V chime.



Don't throw order products with the household waste (garbage). The dangerous substances that they are likely to include may harm health or the environment. Make your retailer take back these products or use the selective collect of garbage proposed by your city.

0 892 350 490

Service 0,15 € / min
+ prix appel

011-2339876

asistencia.tecnica@scs-sentinel.com

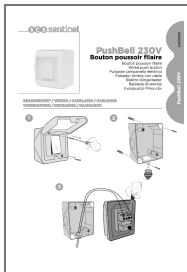


Hotline



scs sentinel

Documents / Resources



[SCS sentinel CAC0003 PushBell 230V Wired Push Button](#) [pdf] Instructions
CAC0003 PushBell 230V Wired Push Button, CAC0003, PushBell 230V Wired Push Button, Wir
ed Push Button, Push Button, Button

[Manuals+](#)