

Contents [[hide](#)]

- [1 scs sentinel AAA0052 KeyGate Wired Key Selector](#)
- [2 Specifications](#)
- [3 Usage](#)
- [4 INSTALLATION](#)
- [5 FAQs](#)
- [6 Documents / Resources](#)
 - [6.1 References](#)

**scs sentinel AAA0052 KeyGate Wired Key Selector****Introduction**

The SCS Sentinel AAA0052 KeyGate Wired Key Selector is a robust and secure access control solution, designed to activate or deactivate electric devices such as automatic gates, garage doors, or security systems using a physical key. Engineered for reliability, it is ideal for residential and commercial applications where controlled entry is a priority.

Its durable construction and tamper-resistant features ensure long-term performance in both indoor and outdoor environments.

Specifications

Feature	Details
Model	AAA0052 KeyGate
Brand	SCS Sentinel
Power Supply	Wired (requires connection to control panel)
Contact Type	Normally Open (NO) / Normally Closed (NC)
Key Type	Euro profile cylinder
Mounting	Surface-mounted
Material	Die-cast aluminum
Ingress Protection	IP54 (weather-resistant)
Dimensions	Approx. 70 x 90 x 50 mm
Operating Temperature	-20°C to +60°C
Application	Access control for gates, doors, shutters

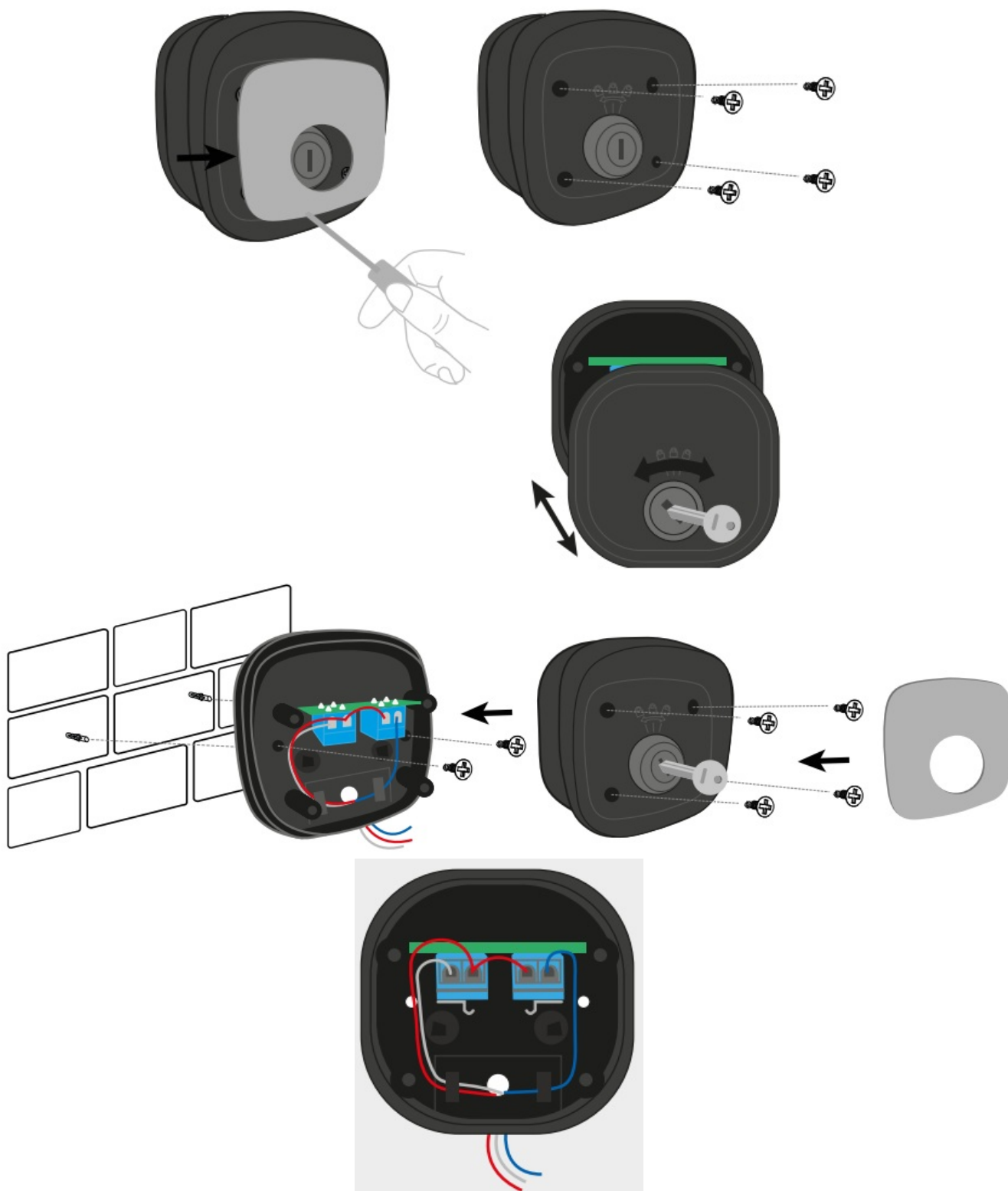
Usage

- **Access Control:** Insert the key and turn it to enable or disable gate motors or access systems.
- **Integration:** Connect to gate automation panels, alarms, or other control systems.
- **Security:** Prevent unauthorized access to properties with physical key control.
- **Installation:** Mount near entry points; professional wiring to the control panel is recommended.

Safety Guidelines

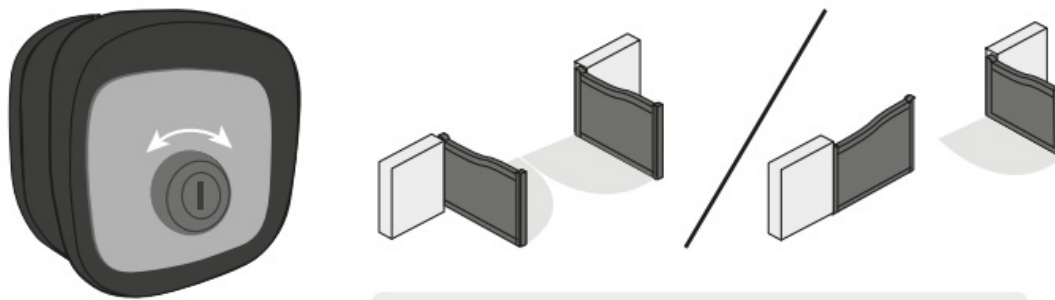
- Always disconnect power before installation or maintenance.
- Use authorized keys only to avoid damage or unauthorized use.
- Ensure proper sealing of wiring and housing in outdoor installations.
- Keep the device free from dust, moisture, and physical damage.
- Do not attempt to force open the selector if jammed—consult a technician.

INSTALLATION



Max 0.75mm²

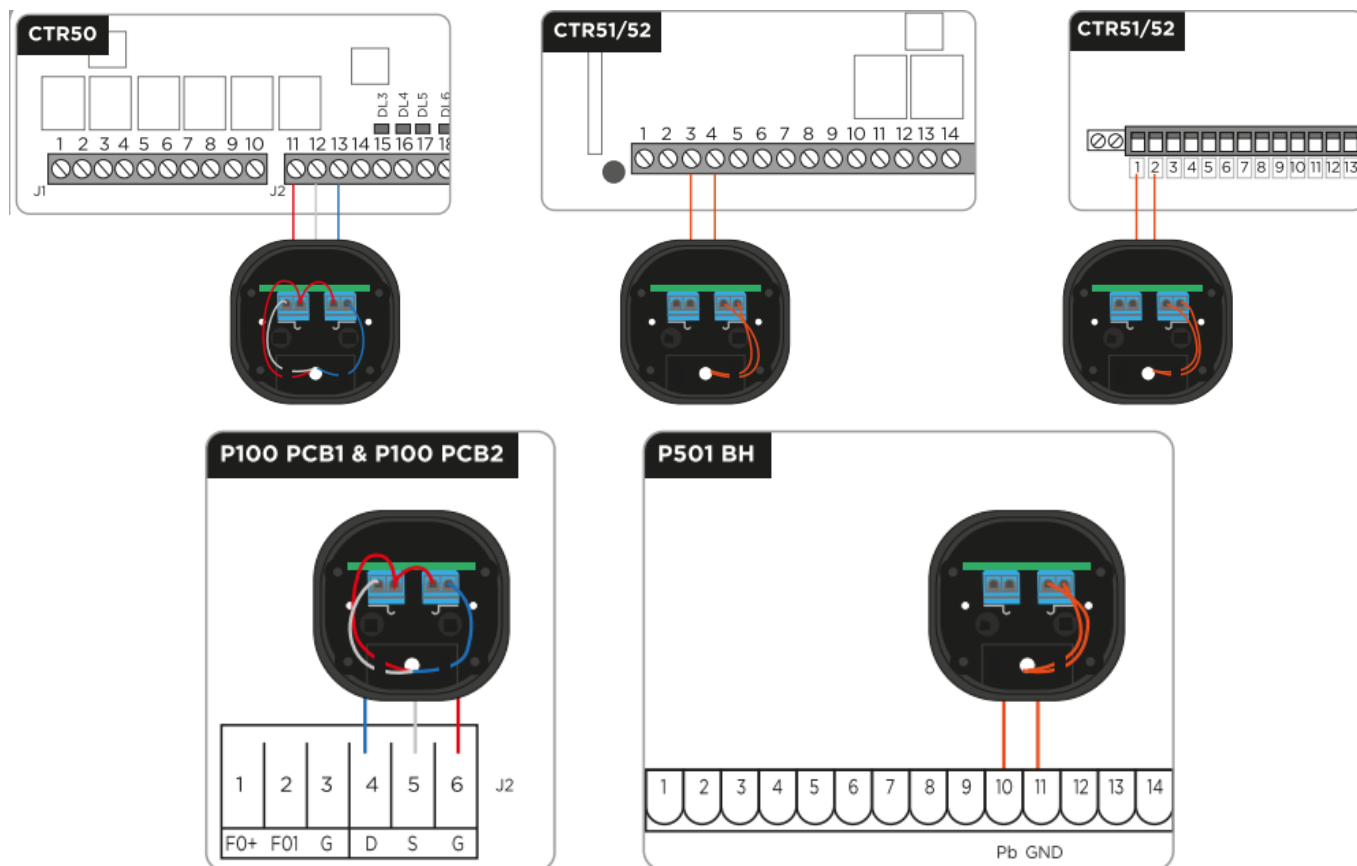
UTILISATION



Total opening or Partial opening (see wiring)

WARNINGS: Failure to follow the instructions excludes SCS SENTINEL's liability and warranty. Do not let children play with the system.

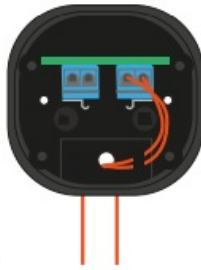
Check the electronic card number on the user's manual of your automation kit.



The key selector has no polarity and must not be used on a powered input.

BRANCHEMENT

General wiring (all brands)



To be connected to the dry contact input of your gate opener

- The outdoor unit is protected against access to solid foreign objects > Imm and protected against splashes from any direction.

Don't throw batteries or out of order products with the household waste (garbage). The dangerous substances that they are likely to include harm health or the environment. Make your retailer take back these products or use the selective collect of garbage proposed by your city.

- For an individual answer, use our online chat on our website www.scs-sentinel.com

FAQs

Q1: Can the SCS AAA0052 be used outdoors?

A1: Yes, it features an IP54 weather-resistant rating, making it suitable for outdoor use.


Q2: Is the key included with the selector switch?

A2: Yes, the product typically comes with a matched Euro profile key and lock mechanism.

Q3: Can it work with both NO and NC circuits?

A3: Yes, the unit supports both Normally Open and Normally Closed contact outputs.

Documents / Resources

	<p>scs sentinel AAA0052 KeyGate Wired Key Selector [pdf] Installation Guide</p> <p>AAA0052, V0125, AAA0052 KeyGate Wired Key Selector, KeyGate Wired Key Selector, Wired Key Selector, Key Selector, Selector</p>
-------------------------------------------------------------------------------------	-----------------------------------------------------------------------------------------------------------------------------------------------------------------------------------------------------------------------------------

References

- [User Manual](#)

📁 SCS

sentinel

🔑 AAA0052, AAA0052 KeyGate Wired Key Selector, Key Selector, KeyGate Wired Key Selector, SCS sentinel, Selector, V0125, Wired Key Selector

Leave a comment

Your email address will not be published. Required fields are marked *

Comment *

Name

Email

Website

☐ Save my name, email, and website in this browser for the next time I comment.

Post Comment

Search:

e.g. whirlpool wrf535swhz

Search

This website is an independent publication and is neither affiliated with nor endorsed by any of the trademark owners. The "Bluetooth®" word mark and logos are registered trademarks owned by Bluetooth SIG, Inc. The "Wi-Fi®" word mark and logos are registered trademarks owned by the Wi-Fi Alliance. Any use of these marks on this website does not imply any affiliation with or endorsement.