

SCS sentinel
scs-sentinel 7143
Wireless Two Way
Switch Without Battery



scs-sentinel 7143 Wireless Two Way Switch Without Battery Instruction Manual

[Home](#) » [SCS sentinel](#) » [scs-sentinel 7143 Wireless Two Way Switch Without Battery Instruction Manual](#) 

Contents

- [1 scs-sentinel 7143 Wireless Two Way Switch Without Battery](#)
- [2 REPROGRAMMING \(IF NECESSARY\)](#)
- [3 Documents / Resources](#)
 - [3.1 References](#)
- [4 Related Posts](#)



scs-sentinel 7143 Wireless Two Way Switch Without Battery



DuoSwitch Kit interrupteur sans fil & sans pile

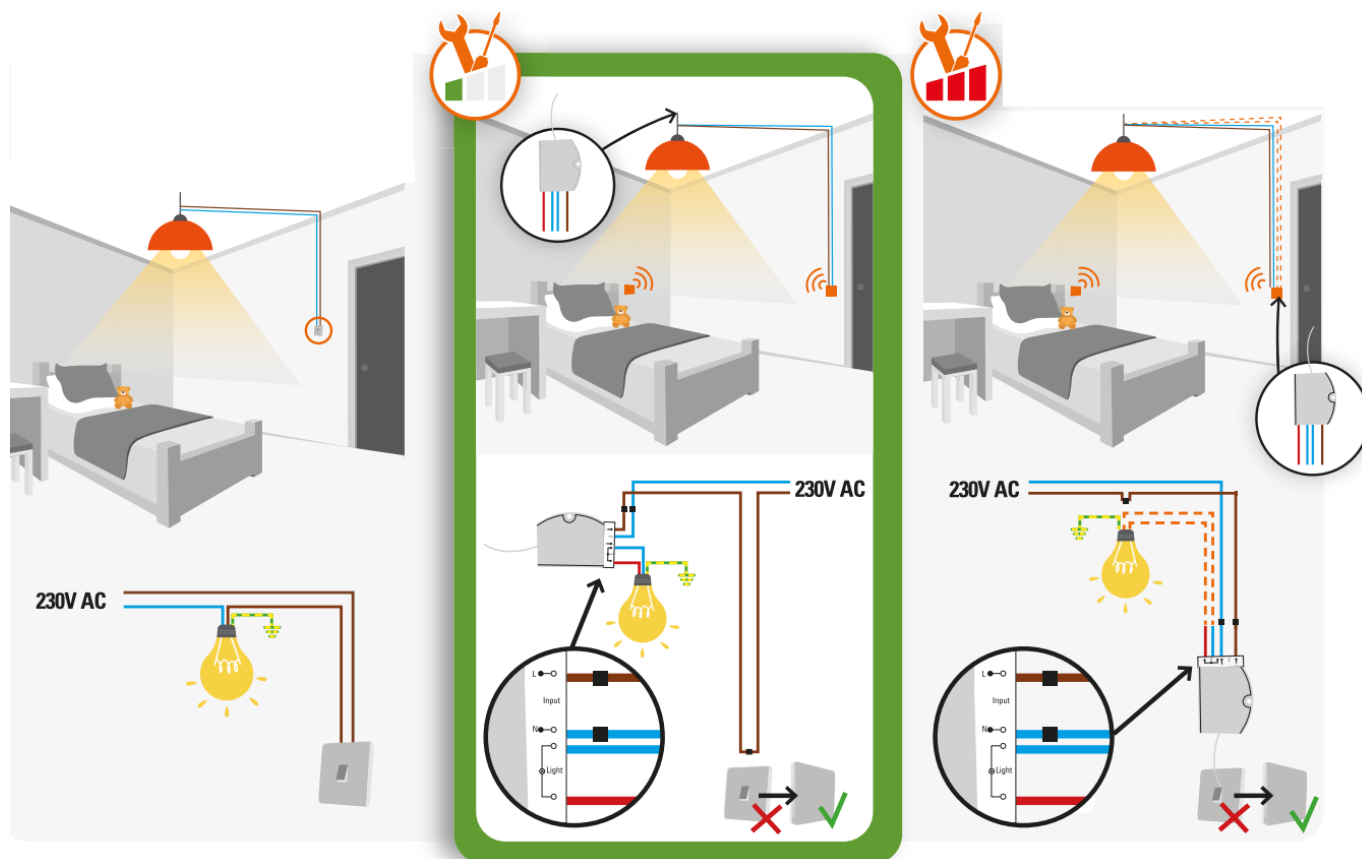


This product must be installed by the installation rules and preferably by a qualified electrician.

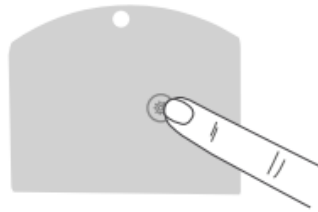
- The mains supply must be disconnected/
- Connect the 2 wires for the mains 230V on a protected line with a fuse or circuit breaker. Wiring specifications:
The wires connected to 230V must be rigid and the cross section must not be smaller than 1.5mm²
- Wires connected to 230V should be fixed with anchorages. The wires connected to 230V must not be flat twin tinsel wires, lighter than braided wires, ordinary tough rubber sheathed wires, and light polyvinyl chloride sheathed wires/ Screw the wires without any looseness/ 4- Do not turn on the switch of the power source before all wiring step is done.

INSTALLATION

- Standard initial configuration
- Another possibility
- Quick connector
- Cables to be run



To test the module, flip the switch and check if the light turns on



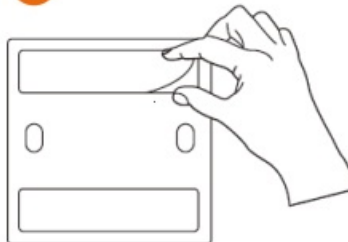
80 m Free-field range

100%	/ free-field /
80%	/ wood, glass /
60-70%	/ plasterboard /
50-70%	/ stone /
20-50%	/ concrete /
<10%	/ metal /

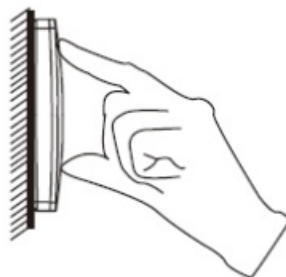
Before installing it, check the location of the switch by pressing it. The light should turn on. If not, bring it closer to the module.

GLUE

1

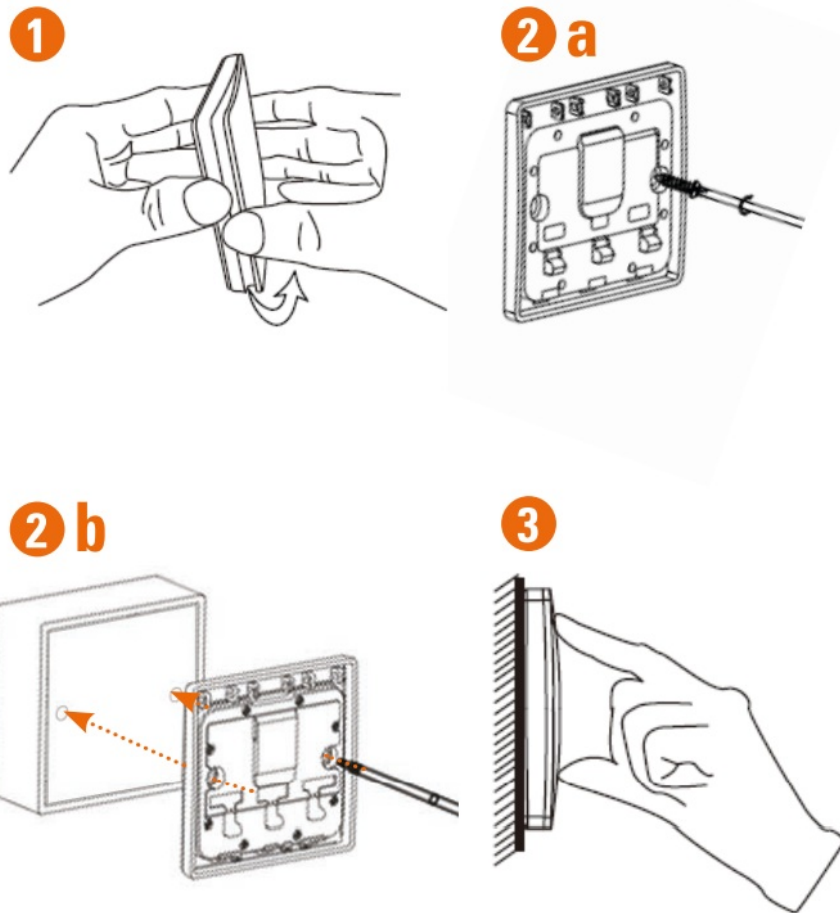


2



1. Use the double-sided tape provided in the packaging to stick the light switch to a smooth, stable, and clean surface.
2. Press down on the switch to properly affix it to the surface.

SCREW



1. Carefully open the switch as indicated in the diagram
 - (2. a) and use screws to affix the switch to the wall
 - (2.b) to the back box.
2. Press down on the switch to properly affix it to the surface. Screws may affect the sensitivity of the push button.
If this is the case, opt for an installation with adhesive.

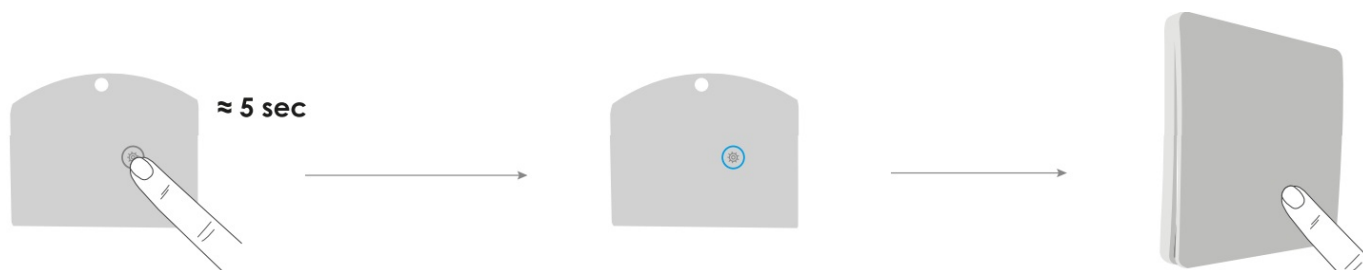
USE



Once the module and the switch have been installed, flip the switch to turn the light on, and again to switch it off.

ADDITION OF A SWITCH

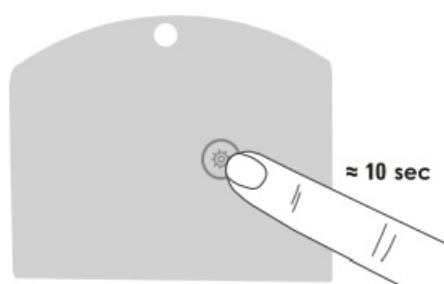
Add up to 10 switches (HCN0073) within the 80 m range.



- Press and maintain the button
- The light will start to flash
- Press xl to pair

REPROGRAMMING (IF NECESSARY)

Reset



- Press & hold the button for about 10 seconds until the LED flashes (it removes all switches).

TECHNICAL SPECIFICATIONS

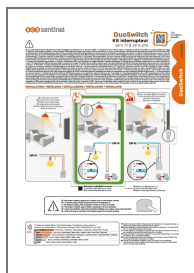
- Operating frequency 433,92 MHz
- Max. transmit power <20mW
- Use of the module /indoor/
- Switch IP67

IP67 : Protected against dust and the effects of temporary immersion (immersion at one meter for thirty minutes)

- 2-year warranty, by French regulation. It is important to keep proof of purchase during the whole warranty period
- secs-sentinel.com
- For an individual answer, use our online chat on our website www.secs-sentinel.com
- This manual is an integral part of your product. Keep it in a safe place for future reference. Use the equipment only for its intended purpose. The appliance should not be exposed to dripping or splashing water: No objects filled with liquids, such as vases, should be placed near the appliance. Do not clean the appliance with abrasive or corrosive substances. Only use a soft cloth. Do not let children play with the product or with the packaging.
- Don't throw out-of-order products with the household waste (garbage). The dangerous substances that they are likely to include may harm health or ®the environment. Make your retailer take back these products or use the selective collection of garbage proposed by your city.

110, rue Pierre-Gilles de Gennes 49300 Cholet – France

Documents / Resources



[scs-sentinel 7143 Wireless Two Way Switch Without Battery](#) [pdf] Instruction Manual
Kit interrupteur, duoswitch-manual-7143, 7143 Wireless Two Way Switch Without Battery, 7143,
Wireless Two Way Switch Without Battery, Way Switch Without Battery, Switch Without Battery,
Without Battery, Battery

References

- [User Manual](#)

[Manuals+](#), [Privacy Policy](#)

This website is an independent publication and is neither affiliated with nor endorsed by any of the trademark owners. The "Bluetooth®" word mark and logos are registered trademarks owned by Bluetooth SIG, Inc. The "Wi-Fi®" word mark and logos are registered trademarks owned by the Wi-Fi Alliance. Any use of these marks on this website does not imply any affiliation with or endorsement.