



SCREENLINE Electrical Installation With Wifi Switch Instructions

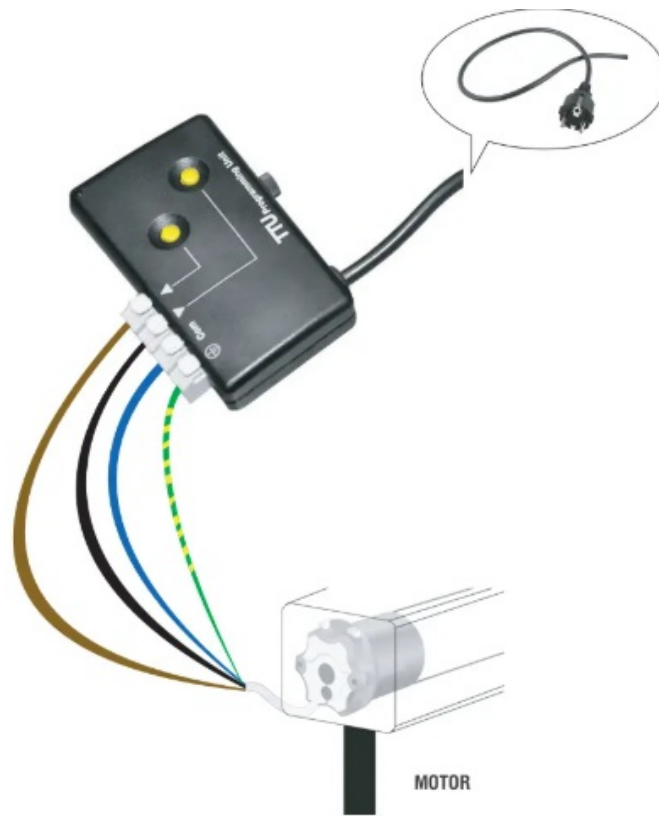
[Home](#) » [SCREENLINE](#) » SCREENLINE Electrical Installation With Wifi Switch Instructions 

Contents

- [1 SCREENLINE Electrical Installation With Wifi Switch](#)
- [2 Product Information](#)
- [3 Product Usage Instructions](#)
- [4 INSTALLATION WITH STANDARD SCREEN](#)
- [5 TROUBLESHOOTING](#)
- [6 Documents / Resources](#)
 - [6.1 References](#)
- [7 Related Posts](#)

SCREENLINE

SCREENLINE Electrical Installation With Wifi Switch



Product Information

Specifications

- Model: Modulo Tapparella
- Input Voltage: 100-250VAC
- Installation Depth: Minimum 60mm
- Works with: Standard screen, blinds with built-in driver

Product Usage Instructions

Standard Installation with Standard Screen:

1. Connect the wires as follows
 - Output N – Neutral Wire for Motor
 - Input N – Neutral Wire (Blue Wire or White Wire)
 - Input L – Live Wire or Hot Wire (Brown/Red/Black Wire from AC Power)
 - Input L – Live Wire for toggle switch
 - Output L 1 – Brown Wire of Motor (1st output terminal for shutter motor)
 - Output L2 – Black Wire of Motor (2nd output terminal for shutter motor)
 - S1 – Terminal for 1st channel
 - S2 – Terminal for 2nd channel

Installation with Blinds with Built-in Driver

1. For blinds with built-in driver, connect the wires accordingly.

2. No need to connect the earth wire of the motor for blinds with built-in driver.

Frequently Asked Questions (FAQ)

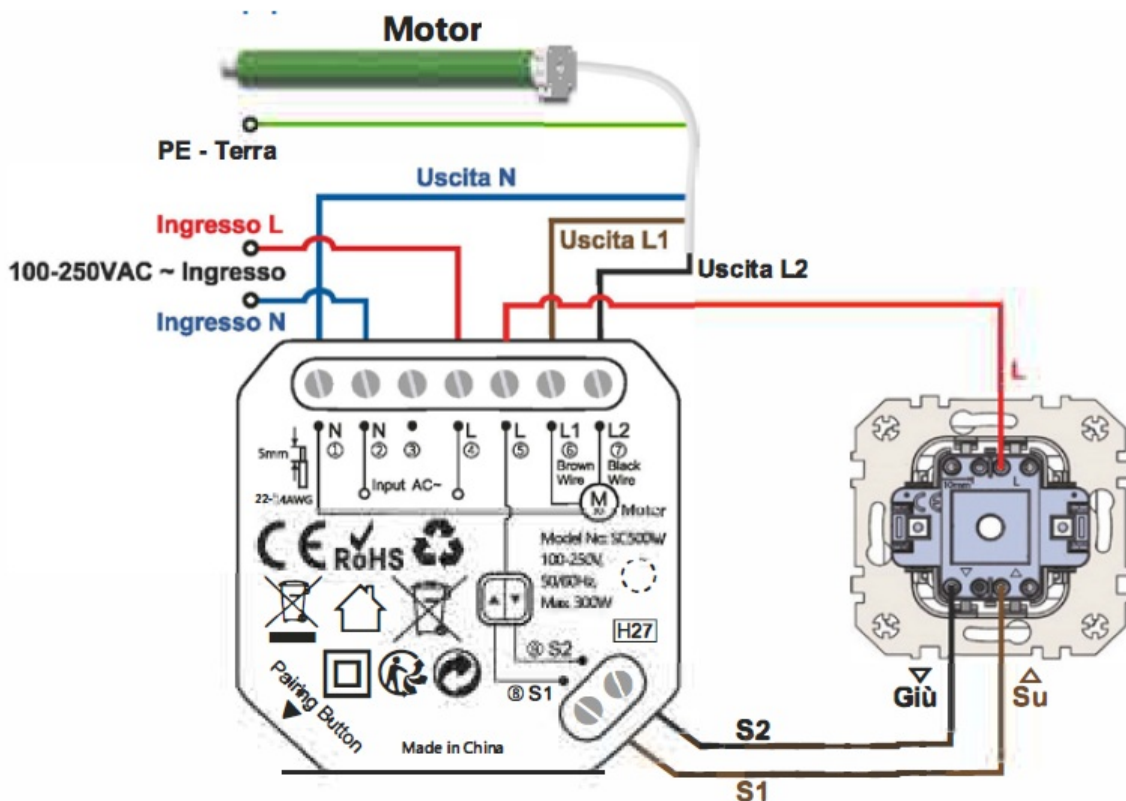
- **Q: Can the Modulo Tapparella be installed by unqualified personnel?**
 - A: No, electrical installation should be done by qualified personnel to ensure safety and proper functioning of the device.
- **Q: What is the input voltage range for the Modulo Tapparella?**
 - A: The input voltage range is 100-250VAC.
- **Q: Can the device be used with blinds that have a built-in driver?**
 - A: Yes, the device is compatible with blinds that have a built-in driver. Follow the specific wiring instructions provided for this setup.

WIFI ELECTRICAL INSTALLATION WITH WIFI SWITCH MODULE

Electrical installation must be carried out by qualified personnel.

- Turn off the AC power before installation!
- Do not connect DC-powered motors, the device is dedicated to operating AC-powered electric motors.
- The device should be installed in a wall switch box compliant with relevant national safety standards and with a depth.
- Works ONLY with roller motors with electronic or mechanical limit switches

INSTALLATION WITH STANDARD SCREEN

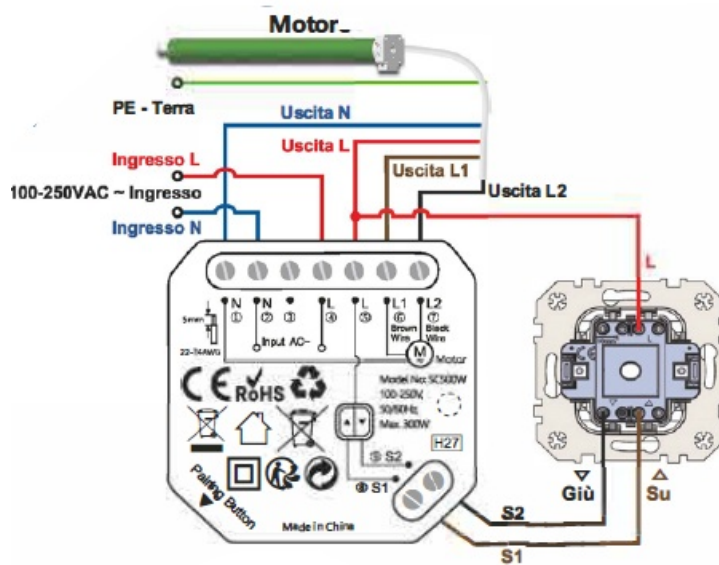


1. Output N – Neutral Wire for Motor
2. Input N – Neutral Wire(Blue Wire or White Wire)
3. Input L – Live Wire or Hot Wire(Brown/Red/Black Wire from AC Power)
4. Input L – Input Live Wire for toggle switch
5. Output L 1 – Brown Wire of Motor (1st output terminal for shutter motor)
6. Output L2 – Black Wire of Motor (2nd output terminal for shutter motor)
7. S1 – Terminal for 1st channel
8. S2 – Terminal for 2nd channel

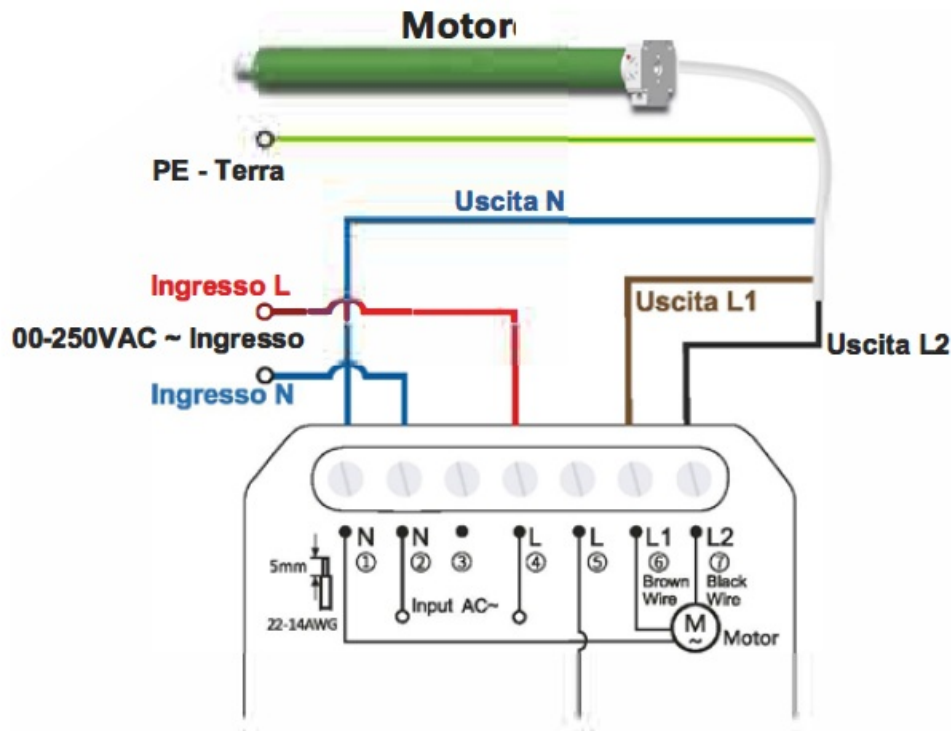
The curtain module doesn't have a terminal for earth wire, so there's no need to connect the earth wire of the motor.

INSTALLATION WITH SCREEN WITH BUILT-IN DRIVER

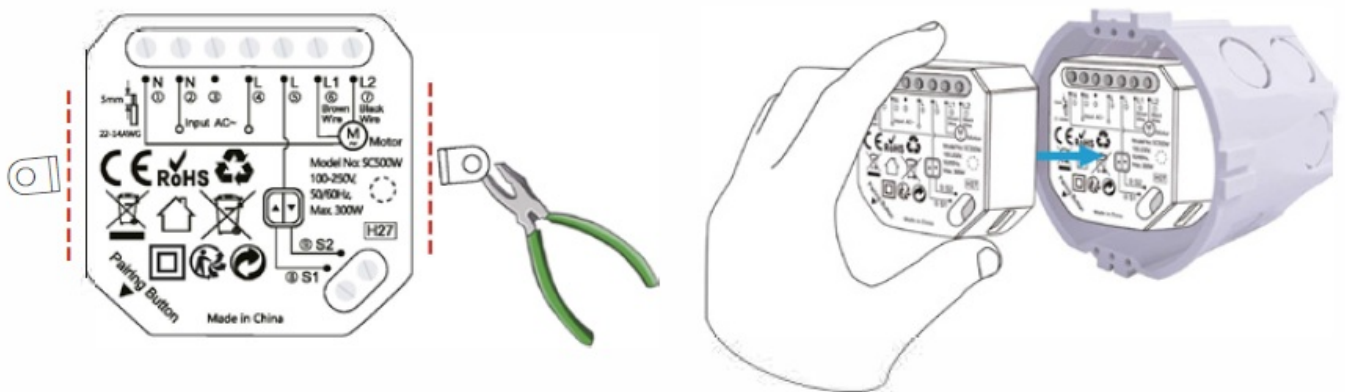
Motor with built-in driver is a motor with 5 wires. (L, L 1, L2, N, Earth Wire).



IF YOU DON'T USE PHYSICAL MANUAL SWITCH, PLEASE REFER TO BELOW WIRING DIAGRAM.



You can remove the screw holder on the curtain module with a pair of pliers if you cannot put the curtain module in the junction box.



TROUBLESHOOTING

1. Please make sure that your device and the WiFi router are in the same room, and do not install the device in the metal box to avoid interference with the transmission of the device's WiFi signal.
2. Please confirm that the Smart Life APP is the latest version, and check whether your smart life app has obtained network and location permissions.
3. Please connect your phone to a separate 2.4GHz WiFi, not 5GHz WiFi. If your WiFi network is dual-band WiFi, please separate the two WiFi bands (2.4GHz and 5GHz) of the router to get a separate 2.4GHz WiFi for device connection.
4. If your device still can't connect to the network, please try to find another mobile phone to use the "personal hotspot" as a router, so that we can troubleshoot the WiFi network, note that the mobile phone "personal hotspot" must also be 2.4GHz WiFi.
5. If your problem cannot be solved, please send us an email and we will reply within 24 hours.

Note: Due to the upgrade and update of Smart Life App, the actual operations may be slightly different from the below description, please follow the current instructions in Smart Life App

1. **Download the Smart Life app.** Please scan the QR code, or download the Smart Life app (provided by Volcano Technology Limited) from App Store, Google Play or Android Market
2. **Register:** Open the Smart Life app, tap “Register” to register an account, then sign in to the app.

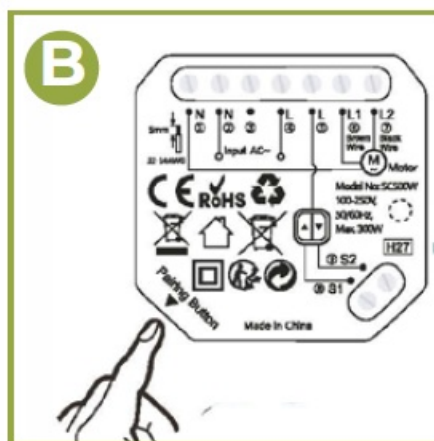


3. ADD DEVICE

- Please turn on the Bluetooth on your cell phone, and enter the main interface of Smart Life App.



- Please turn on the Bluetooth on your cell phone, and enter the main interface of Smart Life App.



- Smart Life App will automatically scan all the devices in pairing mode, and then select the device you want to add. Enter your Wi-Fi name and password, it will connect the Wi-Fi device automatically.



Documents / Resources

	<p>SCREENLINE Electrical Installation With Wifi Switch [pdf] Instructions</p> <p>Electrical Installation With Wifi Switch, Installation With Wifi Switch, With Wifi Switch, Switch</p>
--	--

References

- [User Manual](#)

Manuals+, [Privacy Policy](#)

This website is an independent publication and is neither affiliated with nor endorsed by any of the trademark owners. The "Bluetooth®" word mark and logos are registered trademarks owned by Bluetooth SIG, Inc. The "Wi-Fi®" word mark and logos are registered trademarks owned by the Wi-Fi Alliance. Any use of these marks on this website does not imply any affiliation with or endorsement.