



# SCREENLINE AC231-01 Remote Controller Instructions

[Home](#) » [SCREENLINE](#) » SCREENLINE AC231-01 Remote Controller Instructions 

## Contents

- [1 SCREENLINE AC231-01 Remote Controller](#)
- [2 Product Information](#)
- [3 Product Usage Instructions](#)
- [4 Features](#)
- [5 Parameters](#)
- [6 Installation and wiring](#)
- [7 Manual switch operate instruction](#)
- [8 Operations](#)
- [9 Direction changing](#)
- [10 Delete all transmitter](#)
- [11 Control mode](#)
- [12 Troubles and solutions](#)
- [13 Documents / Resources](#)

**SCREENLINE**  
the screen makes the difference

## SCREENLINE AC231-01 Remote Controller



## Product Information

The kit is designed with an elegant and adaptable shape, making it popular for all decorations. It features a standard 6P crystal socket interface that is available for RS232/485 middle control and a 3/4 line dry contact manual switch. The kit's model number is AC231-01, and it operates on a voltage input of 230VAC/120VAC. The kit's working temperature ranges from -110 dBm, and it has a remote/manual operation mode.

## Product Usage Instructions

1. To pair the transmitter, press the PROG button on the receiver for 1s.
2. To change the direction, there are two methods:
  - Method 1: Press the DOWN button on the transmitter within 10s. The red light on the receiver will flash slowly for 10s, and then the blue light on the receiver will flash rapidly three times.
  - Method 2: Pull the direction-changing switch on the receiver. The blue light on the receiver will flash rapidly three times, indicating that the receiver is programmed.
3. To add a transmitter, press the STOP button on the transmitter for 5s. Then, press the DOWN button on the transmitter within 10s. The blue light on the receiver will flash rapidly three times, indicating that the transmitter has been added.
4. To delete a single transmitter, press the STOP button on the transmitter for 5s. Then, wait for the red light on the receiver to flash slowly for 10s. Finally, press the STOP button on the transmitter within 10s.

Please follow the electricity standard and the below rules:

- Serial B Manual COMMON line
- Manual STOP line
- Manual DOWN Serial A-line
- Ground line
- DOWN STOP ǧ Earth line Null line Live line Common Earth line  
DOWN ǧ
- U S D C

- D S UC

**Note** that the working mode for the external manual switch is no power dry contact mode, and the function of these two interfaces is the same.

## Features

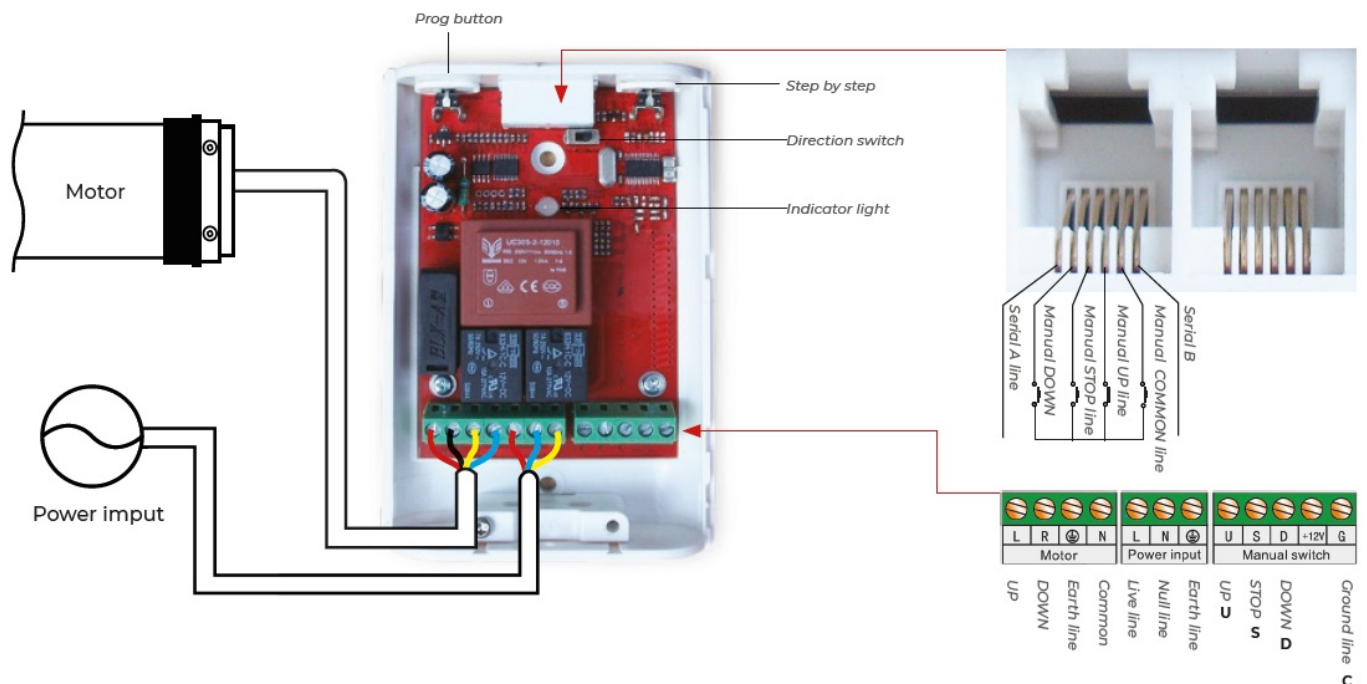
- Fancy shape designed, popular for all decorations
- The casing is fireproof and anti UV design, safety and anti- aging Slid up the casing, easy to install.
- Standard 6P crystal socket interface, available for RS232/485 middle control and 3/4 line dry contact manual switch.
- Direction changing is available under both manual and remote.

## Parameters

Model	Voltage input	Working temperature	Rated power	Receiving sensibility	Transmitter quantity	Operation mode
1	12V	-40~+70℃	10W	-120dBm	1	Continuous wave
2	12V	-40~+70℃	10W	-120dBm	1	Continuous wave
3	12V	-40~+70℃	10W	-120dBm	1	Continuous wave
4	12V	-40~+70℃	10W	-120dBm	1	Continuous wave
5	12V	-40~+70℃	10W	-120dBm	1	Continuous wave
6	12V	-40~+70℃	10W	-120dBm	1	Continuous wave
7	12V	-40~+70℃	10W	-120dBm	1	Continuous wave
8	12V	-40~+70℃	10W	-120dBm	1	Continuous wave
9	12V	-40~+70℃	10W	-120dBm	1	Continuous wave
10	12V	-40~+70℃	10W	-120dBm	1	Continuous wave
11	12V	-40~+70℃	10W	-120dBm	1	Continuous wave
12	12V	-40~+70℃	10W	-120dBm	1	Continuous wave
13	12V	-40~+70℃	10W	-120dBm	1	Continuous wave
14	12V	-40~+70℃	10W	-120dBm	1	Continuous wave
15	12V	-40~+70℃	10W	-120dBm	1	Continuous wave
16	12V	-40~+70℃	10W	-120dBm	1	Continuous wave
17	12V	-40~+70℃	10W	-120dBm	1	Continuous wave
18	12V	-40~+70℃	10W	-120dBm	1	Continuous wave
19	12V	-40~+70℃	10W	-120dBm	1	Continuous wave
20	12V	-40~+70℃	10W	-120dBm	1	Continuous wave
21	12V	-40~+70℃	10W	-120dBm	1	Continuous wave
22	12V	-40~+70℃	10W	-120dBm	1	Continuous wave
23	12V	-40~+70℃	10W	-120dBm	1	Continuous wave
24	12V	-40~+70℃	10W	-120dBm	1	Continuous wave
25	12V	-40~+70℃	10W	-120dBm	1	Continuous wave
26	12V	-40~+70℃	10W	-120dBm	1	Continuous wave
27	12V	-40~+70℃	10W	-120dBm	1	Continuous wave
28	12V	-40~+70℃	10W	-120dBm	1	Continuous wave
29	12V	-40~+70℃	10W	-120dBm	1	Continuous wave
30	12V	-40~+70℃	10W	-120dBm	1	Continuous wave
31	12V	-40~+70℃	10W	-120dBm	1	Continuous wave
32	12V	-40~+70℃	10W	-120dBm	1	Continuous wave
33	12V	-40~+70℃	10W	-120dBm	1	Continuous wave
34	12V	-40~+70℃	10W	-120dBm	1	Continuous wave
35	12V	-40~+70℃	10W	-120dBm	1	Continuous wave
36	12V	-40~+70℃	10W	-120dBm	1	Continuous wave
37	12V	-40~+70℃	10W	-120dBm	1	Continuous wave
38	12V	-40~+70℃	10W	-120dBm	1	Continuous wave
39	12V	-40~+70℃	10W	-120dBm	1	Continuous wave
40	12V	-40~+70℃	10W	-120dBm	1	Continuous wave
41	12V	-40~+70℃	10W	-120dBm	1	Continuous wave
42	12V	-40~+70℃	10W	-120dBm	1	Continuous wave
43	12V	-40~+70℃	10W	-120dBm	1	Continuous wave
44	12V	-40~+70℃	10W	-120dBm	1	Continuous wave
45	12V	-40~+70℃	10W	-120dBm	1	Continuous wave
46	12V	-40~+70℃	10W	-120dBm	1	Continuous wave
47	12V	-40~+70℃	10W	-120dBm	1	Continuous wave
48	12V	-40~+70℃	10W	-120dBm	1	Continuous wave
49	12V	-40~+70℃	10W	-120dBm	1	Continuous wave
50	12V	-40~+70℃	10W	-120dBm	1	Continuous wave
51	12V	-40~+70℃	10W	-120dBm	1	Continuous wave
52	12V	-40~+70℃	10W	-120dBm	1	Continuous wave
53	12V	-40~+70℃	10W	-120dBm	1	Continuous wave
54	12V	-40~+70℃	10W	-120dBm	1	Continuous wave
55	12V	-40~+70℃	10W	-120dBm	1	Continuous wave
56	12V	-40~+70℃	10W	-120dBm	1	Continuous wave

- AC231-01 230VAC/120VAC -40° C ~ +85° C ≤ 500 W -110 dBm ≤ 20 pc s Remote/Manual

## Installation and wiring



## Manual switch operate instruction



1. Press the up key less than 1's the motor runs up, more than 1's then loose up, and the motor stop.
2. Press down the keyless 1's and motor rundown, more than 1's loose, and the motor stop.

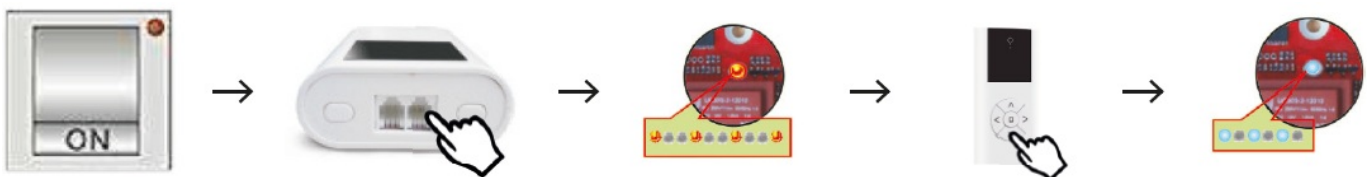
The working mode for the external manual switch is no power dry contact mode, the function of these two interface is the same.

### Please follow the electricity standard and the below rules

- To avoid the receiving error, please do not make the receiver connect metal things
- Keep >1.5m distance between the receiver and the ground
- Keep >0.3m distance between the receiver and the ceiling
- Keep >0.3m distance between the receiver and the transmitter
- For security, please cut off the power before wiring
- To keep components quality, please avoid static. Please use soft cables.
- Please protect the cable loader from the longitudinal force after installation.

## Operations

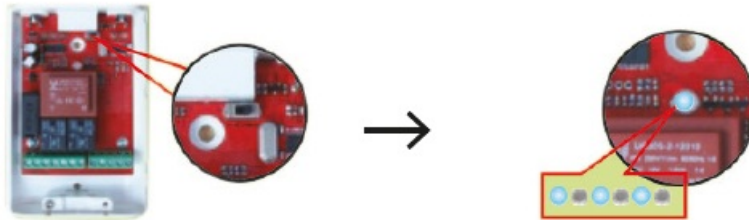
### Transmitter pairing



- Power on
- Press the PROG button on the receiver for 1s
- The red light on the receiver flashes slowly for 10s
- Press the DOWN button on the transmitter within 10s
- The blue light on the receiver flashes quickly 3 times, programmed

### Direction changing

#### Method 1



- Pull the direction-changing switch on the receiver.
- The blue light on the receiver flashes quickly 3 times, programmed.

## Method 2



- Press the STOP button on the programmed transmitter for 5s
- The red light on the receiver flashes slowly for 10s
- Press the DOWN button on the transmitter within 10s
- The blue light on the receiver flashes quickly 3 times, and the direction changed

## Add new transmitter

Every receiver can program with at most 20pcs transmitters, the 21st one will cover the 20th automatically



- Press the STOP button on the programmed transmitter for 5s
- The red light on the receiver flashes slowly for 10s
- Press the UP button on transmitter within 10 s
- The blue light on the receiver flashes quickly 3 times, added

## Delete single transmitter



- Press the STOP button on the programmed transmitter for 5s
- The red light on the receiver flashes slowly for 10s
- Press the BACK button on transmitter within 10s
- The blue light on the receiver flashes quickly 3 times. Delete single code

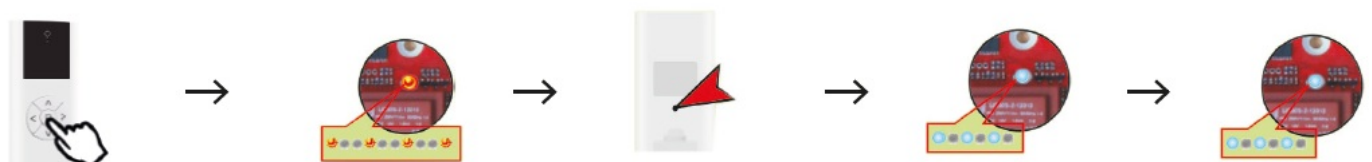
## Delete all transmitter

### Method 1



- Press the PROG button on the receiver for 1s
- The red light on the receiver flashes slowly for 10s
- Press the PROG button on the receiver for 1s
- The red light on the receiver die out, deleted all codes

### Method 2



- Press the STOP button on the programmed transmitter for 5s
- The red light on the receiver flashes slowly for 10s
- Press the BACK button on the transmitter for 7s within 10s
- is, the blue light on the receiver flashes quickly 3 times
- 7s, the blue light on the receiver flashes quickly 3 times, delete all codes

## Control mode

There will be 0.5s for the motor to change rotation, the longest time rotation is 5 min.

## Troubles and solutions

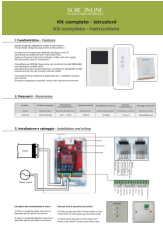
### Troubles

- The indicator light is on, but no reaction
- The indicator on the transmitter is off or dull light
- The transmitter and receiver work commonly, the motor has no rotating

## Solutions

- Please check the wiring and channel choosing
- Please check the battery power (battery installation)
- Please check the motor wiring

## Documents / Resources

	<p><a href="#">SCREENLINE AC231-01 Remote Controller</a> [pdf] Instructions AC231-01 Remote Controller, AC231-01, Remote Controller, Controller</p>
---	---

[Manuals+](#),