



Scotts ST00213S Electric String Trimmer User Manual

[Home](#) » [scotts](#) » Scotts ST00213S Electric String Trimmer User Manual 

Contents

- [1 Scotts ST00213S Electric String Trimmer User Manual](#)
- [2 IMPORTANT SAFETY WARNINGS](#)
 - [2.1 GENERAL SAFETY](#)
- [3 FEATURES](#)
 - [3.1 PRODUCT SPECIFICATIONS ST00213S](#)
- [4 ASSEMBLY](#)
 - [4.1 PACKING LIST](#)
- [5 OPERATING](#)
 - [5.1 CUTTING INSTRUCTIONS](#)
- [6 MAINTENANCE](#)
- [7 TROUBLESHOOTING](#)
- [8 PARTS AND SERVICE](#)
- [9 WARRANTY POLICY](#)



Scotts ST00213S Electric String Trimmer User Manual



Your string trimmer has been engineered and manufactured to our high standard for dependability, ease of operation, and operator safety. Properly cared for, it will give you years of rugged, trouble-free performance.

WARNING: To reduce the risk of injury, the user must read and understand the owner's manual before using this product.

IMPORTANT SAFETY WARNINGS

TO REDUCE RISK OF INJURY:

Before any use, be sure everyone using this tool reads and understands all safety instructions and other information contained in this manual.

CAUTION: Wear appropriate personal hearing protection during use. Under some conditions and duration of use, noise from this product may contribute to hearing loss.

Save these instructions and review frequently prior to use and in instructing others.

WARNING: When using electric gardening appliances, basic safety precautions should always be followed to reduce risk of fire, electric shock, and personal injury, including the following:

GENERAL SAFETY

- **DON'T ABUSE CORD** – Never carry the string trimmer by the cord or yank the cord in order to disconnect from the receptacle. Keep cord from heat, oil, and sharp edges.
- **KEEP CHILDREN AWAY** – All visitors, children and pets should stay at a safe distance from the work area.
- **DRESS PROPERLY** – Don't wear loose clothing or jewelry. Wear protective hair covering to contain long hair. They can be caught in moving parts. Use of rubber gloves and substantial footwear is recommended when working outdoors.

- **USE SAFETY GLASSES** –Wear safety glasses with side shields or goggles that are marked to comply with ANSI Z87.1 standard when operating this product. Use face or dust mask if environment is dusty.
- **GROUND FAULT CIRCUIT INTERRUPTER (GFCI)** protection should be provided on the circuit(s) or outlet(s) to be used for the string trimmer. Receptacles are available having built-in GFCI protection and may be used.
- **USE RIGHT APPLIANCE** – Do not use an appliance for any job except that for which it is intended.
- **EXTENSION CORD.** Make sure your extension cord is in good condition. When using an extension cord be sure it is heavy enough to carry the current your product will draw. An undersized extension cord will cause a drop in line voltage resulting in loss of power and overheating. The following table shows the correct size to use depending on cord length and nameplate ampere rating. If in doubt, use the next heavier gage. The smaller the gage number, the heavier the cord.

Minimum Gage for Cord Sets						
Volts		Total Length of cord in Feet				
120V	0-7	8-15	16-30	31-45		
Ampere Rating						
More	Not More	American wire Gage Than			Than	
0	—	6	18	16	16	14
6	—	10	18	16	14	12
10	—	12	16	16	14	12
12	—	16	14	12	Not Recommended	

It is possible to tie the extension cord and power cord in a knot to prevent them from becoming disconnected during use. Make the knot as shown, then connect the plug end of the power cord into the receptacle end of the extension cord. This method can also be used to tie two extension cords together.

WARNING: Use outdoor extension cords marked SW-A, SOW-A, STW-A, STOW-A, SJW-A, SJTW-A, or SJTOWA. These cords are rated for outdoor use and reduce the risk of electric shock.

POLARIZED PLUGS – To reduce the risk of electric shock, this equipment has a polarized plug (one blade is wider than the other). This equipment must be used with a suitable polarized 2 wire or 3 wire extension cord. Polarized connections will fit together only one way. Make sure that the receptacle end of the extension cord has large and small blade slot widths. If the plug does not fit fully into the extension cord, reverse the plug. If it still does not fit, obtain a suitable extension cord. If the extension cord does not fit fully into the outlet, contact a qualified electrician to install the proper outlet. Do not change the tool plug or extension cord in any way.

WARNING: Do Not use the string trimmer with any type of accessory or attachment. Such usage might be hazardous.

- **DOUBLE INSULATION**-Double Insulation is a concept in safety in electric power tools, which eliminates the need for the usual three-wire grounded power cord. All exposed metal parts are isolated from the internal metal motor components with protecting insulation. Double insulated tools do not need to be grounded.

NOTE: The double insulated system is intended to protect the user from shock resulting from a break in the

tool's internal insulation. Observe all normal safety precautions to avoid electrical shock.

- **DISCONNECT STRING TRIMMER** from the power supply when not in use or when servicing or cleaning. Do not leave unattended.
- **AVOID DANGEROUS ENVIRONMENTS** –Don't use trimmer in rain, damp or wet locations. Do not operate trimmer in gaseous or explosive atmospheres. Motors in these tools normally spark, and the sparks might ignite fumes.
- **AVOID UNINTENTIONAL STARTING** –Don't carry plugged in string trimmer with finger on switch. Be sure switch is off when plugging in.
DANGER: Risk of cut. Keep hands away from the line. Keep both hands on handles when power is on.
- **DO NOT ATTEMPT** to remove cut material or hold material to be cut when lines are moving. Make sure trimmer switch is off when clearing jammed material from guard. Do not grasp the guard or lines when picking up or holding the trimmer.
CAUTION: Lines coast after turn off.
- **DON'T FORCE TRIMMER** –It will do the job better and with less likelihood of a risk of injury at the rate for which it was designed.
- **STAY ALERT-** Watch what you are doing. Use common sense.
- Do not operate string trimmer when you are tired or under the influence of drugs, alcohol or medications.
- **STORE IDLE STRING TRIMMER INDOORS** -When not in use,the string trimmer should be stored indoors in a dry and high or locked-up place, out of reach of children.
- **MAINTAIN TRIMMER WITH CARE** –Keep clean for best performance and to reduce the risk of injury. Inspect extension cord periodically and replace if damaged. Keep handles dry, clean and free from oil and grease.
- **CHECK DAMAGED PARTS** -Before further use of the trimmer, a guard or other part that is damaged should be carefully checked to determine that it will operate properly and perform its intended function. Check for alignment of moving parts, binding of moving parts, breakage of parts, mounting and any other condition that may affect its operation. A guard or other part that is damaged should be properly repaired or replaced. Call our customer service help line at 1-800-618-7474 for assistance.
- **LIGHTING** – Only operate trimmer in daylight or good artificial light. **DON'T OVERREACH** – Keep proper footing and balance at all times.

WARNING: Some dust created by this product contains chemicals known to the State of California to cause cancer, birth defects or other reproductive harm. Some examples of these chemicals are:

- compounds in fertilizers
- compounds in insecticides, herbicides and pesticides
- arsenic and chromium from chemically treated lumber

Your risk from exposure to these chemicals varies depending on how often you do this type of work. To reduce your exposure to these chemicals, wear approved safety equipment such as dust masks that are specially designed to filter out microscopic particles.

WARNING: California Proposition 65:

This product contains chemicals known to the State of California to cause cancer, birth defects or other reproductive harm.

WARNING: Cancer and Reproductive Harm –

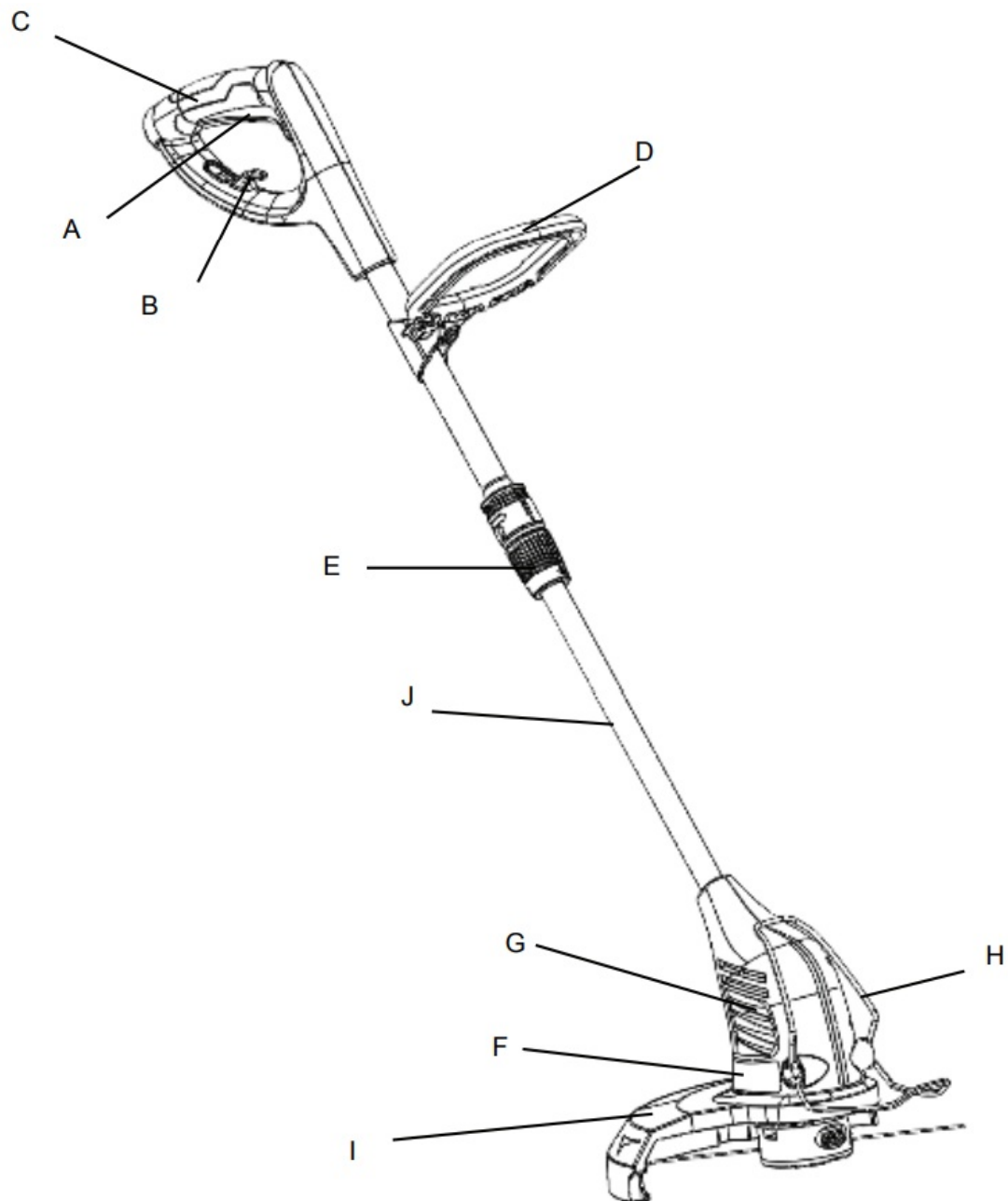
www.P65Warnings.ca.gov.

FEATURES

PRODUCT SPECIFICATIONS ST00213S

- Input 120 V, 60 Hz, 4 Amps
- Speed 9000 RPM
- Cutting Width 13 in.
- Weight 5.51 lb (2.5 kg).

– Dual Line – .065 Line Diameter – Automatic Feed – Adjustable Height –



No.	Description	No.	Description
A	Switch trigger	F	Trimmer head
B	Cord retainer	G	Air vents
C	Rear handle	H	Edger guide
D	Auxiliary handle	I	Safety Guard
E	Locking collar	J	Telescoping shaft

ASSEMBLY

PACKING LIST

- Trimmer Assembly
- Front Handle (with hardware)
- Safety Guard (with screws)
- Owner's Manual

UNPACKING

This product requires some assembly.

Carefully remove the product and accessories from the box. Make sure that all items listed in the packing list are included.

Inspect the product carefully to make sure no breakage or damage occurred during shipping.

Do not discard the packing material until you have carefully inspected and satisfactorily operated the product.

If any parts are damaged or missing, please call 1-800-618-7474 for assistance.

WARNING:

- Do not connect to power supply until assembly is complete. Failure to comply could result in accidental starting and possible serious personal injury.
- If any parts are damaged or missing do not operate this product until the parts are replaced. Failure to heed this warning could result in serious personal injury.
- Do not operate the trimmer without the guard attached.

TOOLS NEEDED

The following tool (not included) is needed for assembly:

- Phillips screwdriver

ATTACHING SAFETY GUARD (See Fig 1)

- Fit the safety guard onto the trimmer head by aligning the tab on the trimmer head with the notch in the safety guard. The screw holes in the safety guard should be aligned with the screw holes in the trimmer head.
- Install the screws and tighten securely.
 - **A** – Screw(s)

- **B** – Screw hole
- **C** – Line cutting blade
- **D** – Safety guard
- **E** – Notch
- **F** – Tab

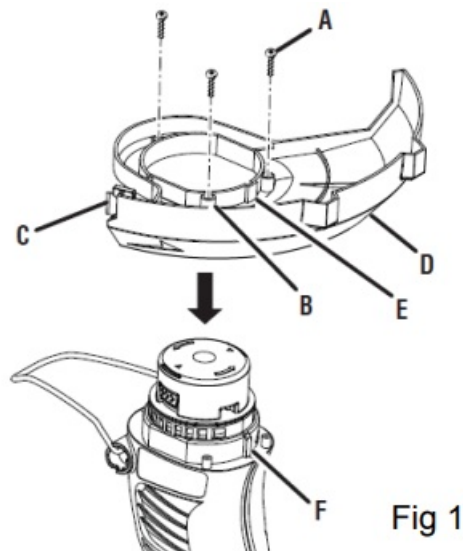


Fig 1

ATTACHING THE AUXILIARY HANDLE (See Fig 2)

- Loosen and remove the wing nut and bolt from the handle.
- Install the handle on the rear handle pole in the area indicated by the illustration.
- Adjust handle up or down, if necessary, to desired operating position.
- Reinstall the bolt and wing nut. Tighten wing nut to secure.

- **A** – Auxiliary handle
- **B** – Rear handle shaft
- **C** – Wing nut
- **D** – Bolt

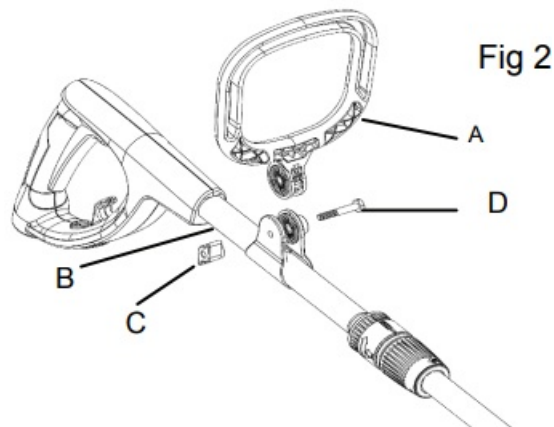


Fig 2

OPERATING

TO TURN THE TOOL ON

- To start the string trimmer, press the switch trigger.
- To stop the string trimmer, release the switch trigger.

Before you start the unit, make sure the trimmer is not contacting any object.

CAUTION: Inspect area to be trimmed and remove any wire, cord, or string-like objects which could become entangled in the rotating line or spool. Be particularly careful to avoid any wire which might be bent outwardly into the path of the tool, such as barbs at the base of a chain link fence.

If you strike or become entangled with a foreign object, stop tool immediately, check for damage and have any damage repaired before further operation is attempted. Do not operate with a broken hub or spool.

WARNING: Do not allow familiarity with this type of product to make you careless. Remember that a careless fraction of a second is sufficient to inflict serious injury.

CAUTION: Lines coasts after turn off.

Do not use under wet conditions.

Do not use with damaged extension cord.

WARNING:

- Stones, pieces of metal and other objects can be thrown out at high speed by the line. The unit and guard are designed to reduce the danger.
- To guard against injury, observe the following:

Read instruction manual before using.

Save instruction manual.

Keep hands away from lines.

Keep hands on handles. Don't overreach.

AUXILIARY HANDLE ADJUSTMENT (See Fig 3)

For maximum comfort and control, adjust the auxiliary handle to suit your height. Shorter users adjust handle to a lower position (away from you) and taller users adjust handle to an upper position (towards you). The handle should be adjusted so that your front arm is straight.

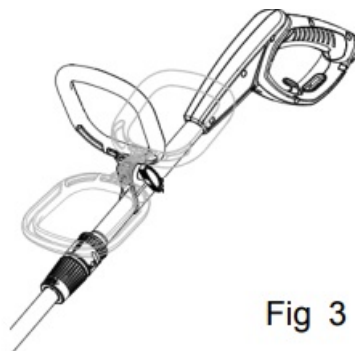


Fig 3

TELESCOPING SHAFT (See Fig 4)

- The shaft can be extended or shortened for ease of use. Unplug the string trimmer.
- Unscrew telescoping shaft locking collar and slide to desired position.
- Tighten telescoping shaft locking collar.

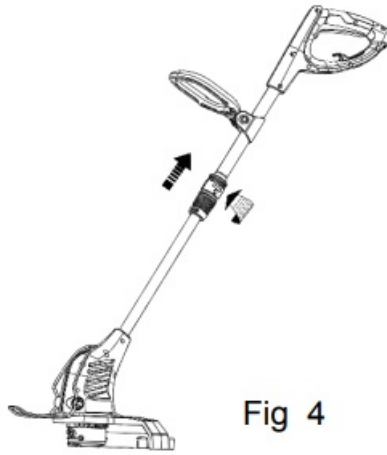


Fig 4

CUTTING INSTRUCTIONS

Basic Cutting Procedure

Wear non-slip gloves for maximum grip and protection.

For the best cutting action against walls, fences and in high grass, move trimmer slowly so grass is cut **WITH THE TIP** of the high speed nylon line.

Avoid running trimmer with hub in contact with ground.

Trim only when grass and weeds are dry.

NOTE: As the weather becomes cooler, the tendency for the nylon line to break becomes greater. **DO NOT USE WHEN TEMPERATURE IS BELOW 50 degrees F.**

Cut tall grass from top down.

Hold the trimmer with your right hand on the rear handle and your left hand on the front handle. Trimmer should be held at a comfortable position with the rear handle about hip height.

WARNING:

- Always hold trimmer away from body. Any contact with the string trimmer cutting head while operating can result in serious personal injury.

The life of your nylon line is dependent upon following instructions for proper use, as well as what is being cut, and where the cutting is being done.

- Do not trim near electrical wires.
- Do not operate a string trimmer in a tree, on a ladder, or on a scaffold; this is extremely dangerous.

TRIMMING INSTRUCTIONS

- Angle unit as shown. (Fig. 5)
- Slowly swing trimmer side to side as shown. (Fig. 6)
- To convert for maintenance edging, turn off the tool. Unplug the string trimmer. Pull up shaft locking collar and turn handle end counterclockwise. Release edging shaft locking collar when handle has been rotated 180° and locks into place. (Fig. 7)
- Rotate the wire edge guide forward and down into place before edging.
- To operate as a maintenance edger, position trimmer above sidewalk as shown. (Fig. 8)
- Return to trimming position by turning the tool off, push in direction of arrow and rotate the trimmer head counter clockwise until it stops. When using the tool in the trimmer mode you may choose to fold the wire edge guide up out of the way.

Fig. 5

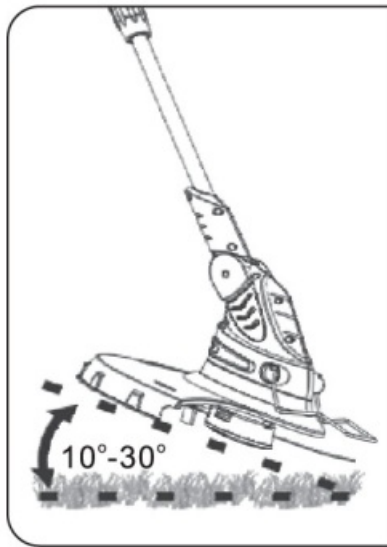


Fig. 6



Fig. 7

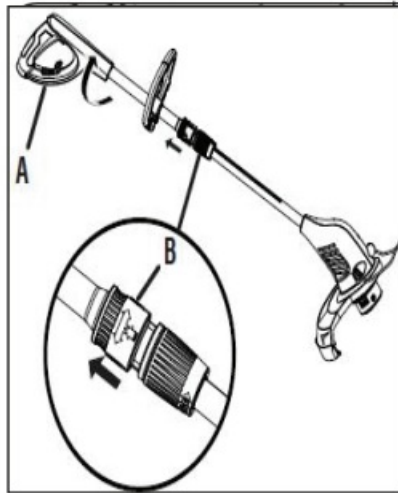


Fig. 8



ADVANCING LINES

NOTE: The trimmer is equipped with an auto-feed head. Bumping the head to try to advance the line will damage trimmer and void warranty.

- With the trimmer running, release the switch trigger.
- Wait two seconds, and press the switch trigger.

NOTE: The line will extend approximately 1/4 in. with each stop and start of the switch trigger until the line reaches the length of the grass deflector blade.

- Resume trimming.

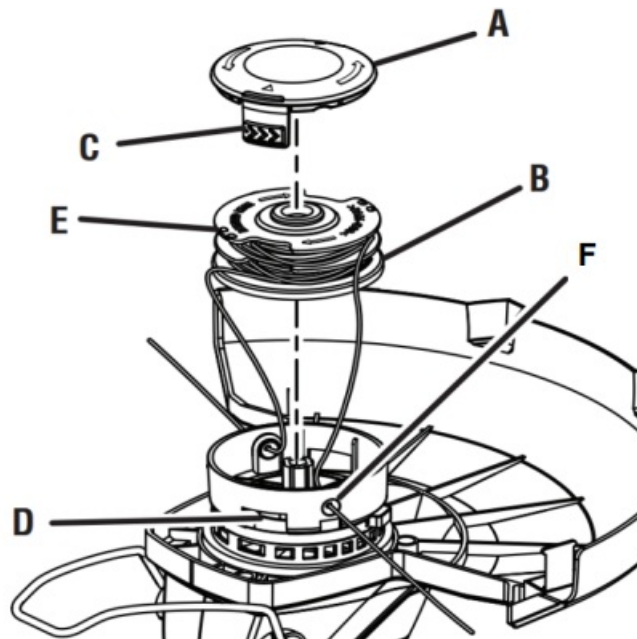
ADVANCING THE LINE MANUALLY

Disconnect the string trimmer from the power supply, then push the spool retainer button in while pulling on trimmer line to manually advance.

REPLACING SPOOL / CLEARING JAMS AND TANGLED LINES

- Unplug the string trimmer.
- Push in tabs on side of spool retainer.

- Pull spool retainer up to remove.
- Remove spool.
- To install the new spool, make sure the two lines are captured in the slots opposite each other on the new spool. Make sure the end of each line is extended approximately 6 in. beyond each slot.
- Install the new spool so that the lines and slots align with the eyelets in the string head. Thread the line into the eyelets.
- Pull the strings extending from the string head so the line releases from the slots in the spool.
- Reinstall the spool retainer by depressing tabs into slots and pushing down until spool retainer clicks into place.



- **A** – Spool retainer
- **B** – Spool
- **C** – Tabs
- **D** – Slots
- **E** – Spool slots
- **F** – Eyelets

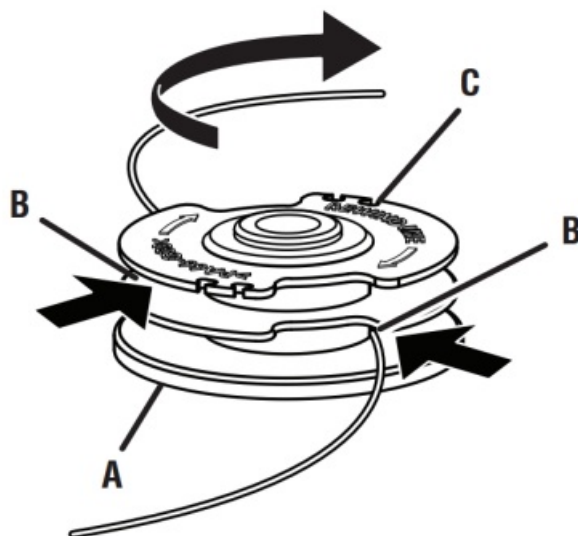
REWINDING SPOOL FROM BULK LINE

(USE ONLY .065" DIAMETER LINE)

Bulk line for your trimmer/edger is available at extra cost from your local dealer or service center. To install bulk line, follow these steps:

- Unplug the string trimmer.
 - Remove the spool from the string head.
- NOTE:** Remove any old line remaining on the spool.
- Cut two pieces of line, each being approximately 9 ft. long. Use only .065 in. diameter monofilament line.
 - Insert the first line into the anchor hole in the upper part of the spool. Wind the first line around the upper part of the spool clockwise, as shown by the arrows on the spool. Place line in the slot on spool, leaving about 6 in. extended beyond the slot. Do not overfill. After winding the line, there should be at least 1/4 in. between the wound line and the outside edge of the spool.

- Repeat above step with second line, using the bottom part of spool. Do not overfill.
- Replace the plastic retainer, spool, and the spool retainer. Refer to Spool Replacement earlier in this manual.



- **A** – Spool
- **B** – Hole
- **C** – Spool slots

MAINTENANCE

CAUTION: Do not at any time let brake fluids, gasoline, petroleum based products, penetrating oils, etc., come in contact with plastic parts. They contain chemicals that can damage, weaken or destroy plastic.

Make sure the trimmer is unplugged from the power supply, then use only mild soap and a damp cloth to clean the tool. Never let any liquid get inside the tool; never immerse any part of the tool into a liquid.

Fertilizers and other garden chemicals contain agents which greatly accelerate the corrosion of metals. Do not store the tool on or adjacent to fertilizers or chemicals.

IMPORTANT: To assure product SAFETY and RELIABILITY, repairs, maintenance and adjustment should be performed by a qualified individual using only identical replacement parts.

If you drop the trimmer, carefully inspect it for damage. If the guard is bent or cracked, handles broken or if you see any other condition that may affect the trimmer's operation, it must be repaired before putting it back into use. Call our customer service help line at 1-800-618-7474 for assistance.

TROUBLESHOOTING

Problem	Possible Cause	Possible Solution
- Unit does not run	- Extension cord not connected to the plug - Cord not connected to power source - Lock button not fully operated	- Check extension cord is fully connected to tool - Check extension cord is fully connected to a live receptacle - Check that lock button is fully depressed prior to moving trigger
- Line won't feed	- Line tangled in spool	- Untangle line
- Line fails to cut off	- Line cutter in guard is damaged or missing - Line extends past guard	- Replacement/repair line cutter - Rewind or trim line to line cutter

CALL US FIRST !!

Call us first with questions about operating or maintaining your product at 1.800.618.7474 between 8:00 a.m. – 5:00 p.m. Eastern Standard Time, or get assistance on scotts.americanlawnmower.com.

PARTS AND SERVICE

For parts or service, please call 1-800-618-7474 or visit us online at scotts.americanlawnmower.com. Be sure to provide all relevant information when you call or visit.

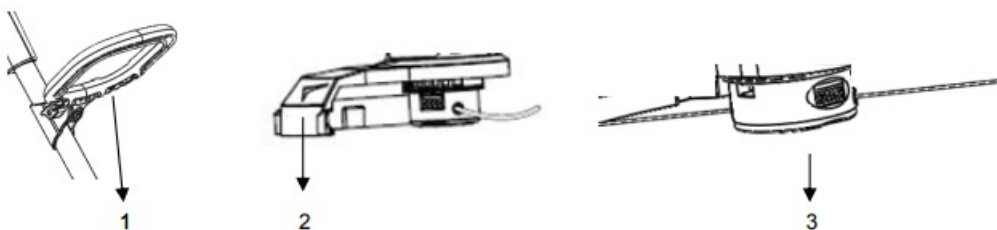
REPAIR PARTS (KITS/ ITEMS)

The model/ serial number of this tool is found on a plate or label attached to the housing. Please record the serial number in the space provided below.

MODEL NUMBER ST00213S

SERIAL NUMBER

Always mention the model number when ordering kits/items for this tool.



No.	Kit/Item Number	Description	QTY
1	ST13-AHK-1	Auxiliary handle Kit	1
2	ST13-PGK-1	Protective Guard Kit	1
3	RS90113	Spool Kit	1

OWNER'S MANUAL

ST00213S ELECTRIC STRING TRIMMER

Copyright. All Rights Reserved.

WARRANTY POLICY

Scotts Warranty policy

- 3 Year limited warranty on all Scotts corded power tools from date of purchase when used for personal, household, or family use.
The Great States Corp. (GSC) warrants to the original owner that this Scotts product and service part is free from defects in materials and workmanship and agrees to repair or replace any defective product or part for the warranty period as stated above.
- Warranty voided if used for commercial or industrial purposes or any other improper use as determined by GSC.
- Warranty does not include repairs necessary due to operator's abuse or negligence (including overloading the product beyond capacity or immersion in water), or the failure to assemble, operate, maintain or store the product according to the instructions in the owner's manual.
- This warranty does not cover

- Wear items, including but not limited to – drive belts & gears, tines, cutting blades, mower blades, saw chains, mulching blades, blower fans, spool covers, trimmer line, blower and vacuum tubes, guide bars, high pressure hoses, wheels, handles, augers, worn bags, power cables, and other items subject to wear over time.
- Wear on batteries, including but not limited to – drops, wear and breakage on charger, exposure to extreme temperature swings (hot or cold), battery left on charger too long, battery left uncharged for too long, and misuse or abuse of the battery.
- This warranty does not cover damage caused by cold, heat, rain, excessive humidity or other environmental extremes.
- This warranty does not cover normal deterioration of the exterior finish or normal wear and tear on the products including, but not limited to scratches, cracks, dents, or damage caused by outside chemicals.
- This warranty is not transferable and only applies to new products sold directly from an authorized retailer. This warranty does not apply to any product, new or used, purchased through unauthorized third-party channels. For information on authorized dealers, contact our customer support hotline at 1-800-618-7474 (Mon-Fri 8am-5pm Est)
- Any incidental, indirect or consequential loss, damage, or expense that may result from any defect or malfunction of the products is not covered by the warranty.
- The warranty does not include installation, assembly or normal adjustments explained in the operator's manual. The expense of delivering the product to the vendor and the expense of returning the product or replacement parts to the owner is not covered by the warranty.

Additional Warranty Limitations

Some states do not allow the exclusion or limitation on how long an implied warranty lasts, so the above limitation may not apply to you. Products sold damaged or incomplete, sold —as is, or sold as reconditioned are not covered under the warranty.

Damage or liability caused by shipping, improper handling, improper assembly, incorrect voltage, improper wiring, improper maintenance, improper modification or the use of accessories and/or attachments not specifically recommended is not covered by this warranty.

Proof of purchase, original dated sales receipt, must accompany all warranty claims.

For claims go to scotts.americanlawnmower.com or call our customer support hotline from 8am-5pm EST, Mon-Fri at 1-800-618-7474

American Lawn Mower Company The Great States Corporation 7444 Shadeland Station Way Indianapolis, IN 46256 USA Phone 1-800-618-7474

scotts.americanlawnmower.com

In a continued commitment to improve quality, the Manufacturer reserves the right to make component changes or design changes when necessary.

Download PDF: [Scotts ST00213S Electric String Trimmer User Manual](#)