




Scotsman MC0830 Cube Ice Machine User Manual

[Home](#) » [Scotsman](#) » Scotsman MC0830 Cube Ice Machine User Manual 

Contents

- 1 Scotsman MC0830 Cube Ice Machine
- 2 Product Information
- 3 Product Usage Instructions
- 4 MC8030 – 800lb Cube Ice Machine
 - 4.1 ENHANCED RELIABILITY
 - 4.2 SANITARY DESIGN
 - 4.3 24-Hour Volume Production
 - 4.4 Modular Bin Options
 - 4.5 Cube Ice
 - 4.6 Certification
 - 4.7 Warranty
 - 4.8 Dimension
 - 4.9 Specifications
 - 4.10 Accessories
 - 4.11 Operating Requirements
- 5 ID150 / ID200 / ID250 – Ice Dispensers
 - 5.1 Features
 - 5.2 Certification
 - 5.3 Warranty
 - 5.4 Dimension
 - 5.5 Specifications
 - 5.6 Accessories
- 6 Documents / Resources
- 7 Related Posts

Scotsman®

Scotsman MC0830 Cube Ice Machine



Product Information

The MC8030 is an 800lb cube ice machine designed for enhanced reliability and ease of use. It features the AutoAlert™ panel, which displays relevant machine status and now includes an external bin full indicator light and a 16-segment display for easier reading. The machine has a sanitary design with removable external air filters to speed up the cleaning process and reduce the unit's footprint. It also utilizes WaterSense Adaptive Purge technology to optimize water consumption and keep the machine cleaner and more efficient. The MC8030 model is equipped with intelligent sensor technology to maximize efficiency and lower operating costs. It has a 24-hour volume production capacity and is available in air-cooled, water-cooled, and remote configurations. The modular bin options for the MC8030 model include the B530S or P, B842S, and B948S, with different bin application capacities and dimensions.

The cube ice produced by the machine is a common ice form, ideal for mixed drinks. It is available in two sizes: small cube (7/8 x 7/8 x 3/8 inches or 2.22 x 2.22 x 0.95 cm) and medium cube (7/8 x 7/8 x 7/8 inches or 2.22 x 2.22 x 2.22 cm). The product is designed, engineered, and assembled in the USA and is certified under ISO 9001:2015 standards. It comes with a warranty.

Product Usage Instructions

Installation:

- Choose a suitable location for the ice machine.
- Ensure proper ventilation and clearance around the machine.
- Connect the water inlet and drain according to the specifications.
- If using a remote condenser, follow the provided instructions for installation.
- Refer to the product manual for detailed installation steps and requirements.

Operation:

- Connect the machine to a power source with the appropriate voltage, frequency, and phase.
- Turn on the power switch and ensure the machine is receiving power.

- Monitor the AutoAlert™ panel for machine status and any alerts or indicators.
- If the bin full indicator light is on, empty the ice bin to prevent overflow.
- Check the water inlet and drain regularly to ensure proper functioning.

Cleaning and Maintenance:

- Regularly clean the removable external air filters to maintain optimal performance.
- Refer to the product manual for recommended cleaning procedures and intervals.
- Follow proper sanitation practices when handling and cleaning the machine.
- If experiencing any issues or malfunctions, refer to the troubleshooting section of the manual or contact customer support.

Cube Ice Usage:

- Select the desired cube size (small or medium) based on your preference or application.
- Use the ice produced by the machine for mixed drinks or other suitable purposes.
- Store excess ice in the modular bin options or other suitable containers.

For more detailed information on installation, operation, cleaning, and maintenance, please refer to the product manual provided by Scotsman or contact their customer relations team.

MC8030 – 800lb Cube Ice Machine

ENHANCED RELIABILITY

- **Integrated ICELINQ® App**

Provides real-time diagnostics, access to settings and guided cleanings. The app also contains specific information for convenient maintenance.

- **Upgraded Sensors**

Ice thickness and water sensor design enhances cleanability and amplifies durability.

- **Preservation Mode**

Maximizes uptime and notifies users of potential issues.

EASE OF USE

AutoAlert™ Panel

The AutoAlert™ panel displays relevant machine status that is visible across the room. Now features an external bin full indicator light and easier-to-read 16-segment display.

SANITARY DESIGN

- **Removable, External Air Filters**

Speeds up the cleaning process and reduces unit footprint.

- **WaterSense Adaptive Purge**

Optimizes water consumption, keeping the machine cleaner and operating more efficiently.

The ICELINQ® app simplifies interaction with machine via Bluetooth® connection



Intelligent sensor technology maximizes efficiency and lowers operating costs



24-Hour Volume Production

Air Cooled			Remote			Water Cooled		
70°F/21°C 50°F/10°C	Air Water	90°F/32°C 70°F/21°C	70°F/21°C 50°F/10°C	Air Water	90°F/32°C 70°F/21°C	70°F/21°C 50°F/10°C	Air Water	90°F/32°C 70°F/21°C
905/411 lb/kg		718/326 lb/kg	870/395 lb/kg		780/355 lb/kg	924/420 lb/kg		832/378 lb/kg

Modular Bin Options

Model Number*	Dimensions W" x D" x H"	Capacity lb/kg	Finish	Ship Weight lb/kg
B530S or P	30 x 34 x 50	536/244	Metallic or Poly	150/68
B842S	42 x 34 x 44	778/353	Metallic	190/86
B948S	48 x 34 x 50	893/406	Metallic	209/95

Cube Ice

Common ice form, ideal for mixed drinks.



Small Cube
7/8" x 7/8" x 3/8"
(2.22 x 2.22 x .95 cm)



Medium Cube
7/8" x 7/8" x 7/8"
(2.22 x 2.22 x 2.22 cm)

Certification



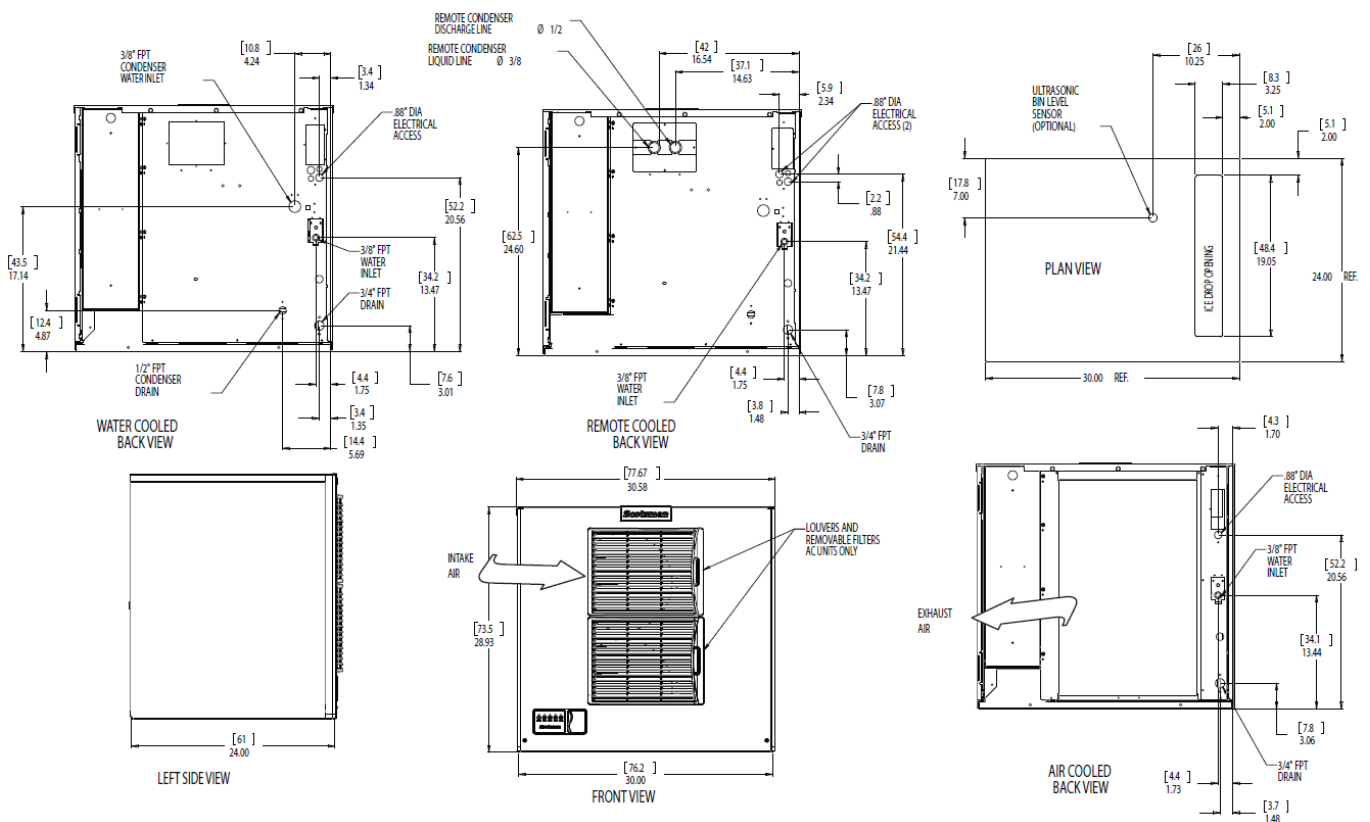
ICELINQ



Warranty

- 3 Years of parts and labor on all components.
- 5 Years of parts and labor on the evaporator.
- 5 years of parts on the compressor and condenser.
- Warranty valid in North, South & Central America for commercial installations.
- Contact the factory for warranty in other regions.
- Residential Applications: 1-year parts and labor

Dimension



Specifications

Model Number Cube Size : medium or small	Condenser Unit		Basic Electrical Volts/Hz/Phase	Max. Fuse Size or HACR Circuit Breaker (amps)	Circuit Wires	Min. Circuit Ampacity	Energy Consumption kWh/100 lb (45.4 kg) 90°F(32°C)/70°F(21°C)		Water Usage Gallons/100 lb (liters/45.4 kg) Potable Condenser 90°F(32°C)/70°F(21°C)
MC0830MA-3	Air		208-230/60/3	15	3	8.4	4.99	18.0/68.2	–
MC0830MA-32	Air		208-230/60/1	15	2	10.2	4.99	18.0/68.2	–
MC0830MR-32	Remote		208-230/60/1	15	2	10.0	4.70	18.4/69.8	–
MC0830MW-32	Water		208-230/60/1	15	2	9.0	4.00	18.9/71.7	136.0/515.7
MC0830SA-3	Air		208-230/60/3	15	3	8.4	4.99	18.0/68.2	–
MC0830SA-32	Air		208-230/60/1	15	2	10.2	4.99	18.0/68.2	–
MC0830SR-32	Remote		208-230/60/1	15	2	10.0	4.70	18.4/69.8	–
MC0830SW-32	Water		208-230/60/1	15	2	9.0	4.00	18.9/71.7	136.0/515.7

All Models

Dimensions (W x D x H):

- **Unit:** 30" x 24" x 29" (76.2 x 61.0 x 73.7 cm)
- **Shipping Carton:** 33.5" x 27.5" x 34" (85.1 x 69.9 x 86.4 cm)
- **Shipping Weight:** 220 lb / 100 kg
- **BTUs per hour:** 13,700
- **Refrigerant:** R-404A

Accessories

Model Number/Description

- KVS Vari-Smart™ Ice Level Control – Precisely control ice levels using ultrasonic technology.
- KBILC Basic Ice Level Control – Thermistor technology, ideal for dispenser applications.
- KSBUS Smart-Board™ Advanced Control – Use additional operational data for fast diagnosis.

- KSBU-N Smart-Board™ Advanced Control with Network – Network capable.
- ERC311-32 Remote condenser for MC0830xR, 208-230/60/1- Consult remote condenser spec sheet for details.
- BRTE10 10ft (3.0 m) line set, brazing required
- BRTE25 25ft (7.6 m) line set, brazing required
- BRTE40 40ft (12.2 m) line set, brazing required
- BRTE75 75ft (22.9 m) line set, brazing required
- KPAS Prodigy Advanced Sustainability Kit – Includes KVS and KSBU – N
- XR-30 XSafe® Sanitation System for Modular Cube – Continuous operation, field-installed.

Scotsman recommends all ice machines have water filtration. See the Scotsman water filter specification sheet for details.

Operating Requirements

	Minimum	Maximum
Air Temperatures	50°F (10°C)	100°F (38°C)
Water Temperatures	40°F (4.4°C)	100°F (38°C)
Remote Cond. Temps	-20°F (-29°C)	120°F (49°C)
Potable Water Pressure	20 PSIG (1.4 bar)	80 PSIG (5.5 bar)
Cond. Water Pressure	20 PSIG (1.4 bar)	230 PSIG (16.1 bar)
Electrical Voltage	-5%	+10%

ID150 / ID200 / ID250 – Ice Dispensers

Features

- Three sizes to fit the needs of any application.
- Heavy-duty agitator motor for long life.
- Adjustable off-cycle agitation for various ice forms and ambient conditions.
- Heavy-duty agitator reduces ice jams and bridging.
- Reliably dispenses nugget ice with confidence.
- Insulated, heavy-duty drip tray prevents condensation.
- Greater dispensable ice for periods of peak demand.
- All components front accessible.



ID250



ID150



ID200

Machine Stands

For installation where counter space is not available to accommodate an ice only dispenser unit, the IOBDMS22 & IOBDMS30 machine stands are the solution.



Certification



- 1 year of labor on all components.
- 2 years parts on all components.
- Warranty valid in North, South & Central America for commercial installations.
- Contact the factory for warranty in other regions.
- Residential Applications: 1-year parts and labor

Installation Note:

Recommended counter opening size 9" x 12" for utilities and tubing. The opening can be located anywhere within the shaded area.



Model Number	Dimensions* (W x D x H)	Storage Capacity (lb /kg)	Actuation	Basic Electrical Volts/Hz/Phase	Max. Fuse Size or HACR Circuit Breaker (amps)	Circuit Wires	Min. Circuit Ampacity
ID150	22" x 30" x 35.63"	150/68	Push Bar	115/60/1	15	2	Cord
ID200	30" x 30" x 35.63"	200/91	Push Bar	115/60/1	15	2	Cord
ID250	30" x 30" x 39.63"	250/114	Push Bar	115/60/1	15	2	Cord

All Models

Model #	Carton (W x D x H)	Weight (lb/kg)
ID150	25" x 35" x 42"	149/68
ID200	35" x 36" x 45"	183/83
ID250	35" x 36" x 45"	188/85

Accessories



Model Number	Description
IOBDMS22	The machine stands for ID150
IOBDMS30	Machine stand for ID200 & ID250
KNUGDIV	Field-installed nugget ice kit for all ID dispensers
KWGFID	Field-installed water glass filler kit for all ID dispensers

Contact Information

- 101 Corporate Woods Parkway, Vernon Hills, IL 60061
- 1-800-SCOTSMAN
- **Fax:** 847-913-9844
- www.scotsman-ice.com
- customer.relations@scotsman-ice.com

© 2021 Scotsman Ice Systems.

Documents / Resources

	<p>Scotsman MC0830 Cube Ice Machine [pdf] User Manual MC0830 Cube Ice Machine, MC0830, Cube Ice Machine, Ice Machine</p>
	<p>Scotsman MC0830 Cube Ice Machine [pdf] User Manual MC0830 Cube Ice Machine, MC0830, Cube Ice Machine, Ice Machine</p>